

PASCAS WORLDCARE



CULTURAL CENTRES



Feelings first

**ONE
WORLD**

“Peace And Spirit Creating Alternative Solutions”

PASCAS FOUNDATION (Aust) Ltd
ABN 23 133 271 593

Em: info@pascasworldcare.com
Em: info@pascashealth.com

Pascas Foundation is a not for profit organisation
Queensland, Australia

www.pascasworldcare.com www.pascashealth.com

PASCAS WORLDCARE CULTURAL CENTRE:

Culture is born out of human interaction; it therefore cannot exist without people around to enjoy, evaluate, remix and *participate* in it.

So why do our cultural centres so often turn inward, away from the street, onto an internal space that is only nominally for gathering and is mainly used for passing through?

Why do these cultural centres physically remove culture from the public realm and plop it on a curated, often "visionary" pedestal instead of providing a venue for promoting more interaction among the people who create it? "Big Cultural Centres--think of Lincoln Center in Manhattan--they need to turn themselves inside-out and become about culture for all instead of culture for a few," says PPS President Fred Kent. "Elitism is a big part of what's going on in some of these places. They exude a subtle sense of who 'should' and 'should not' be there."



By improving the public spaces that surrounds and connects them, and to extend the precinct past its formal edges, with cultural activity reaching out into the surrounding area like an octopus. Pascas WorldCare Cultural Centre is an institution that includes theatres, a history museum, a unique library, and a compact college campus with meeting rooms, but more importantly it is about striving for a quality of living that has never been recognised as being possible before this moment in history.



Cultural centres are becoming more popular around the world, as technology, like the internet, makes the world feel more connected. More and more people are becoming interested in other cultures in addition to wanting to share their own. Cultural centres are a prime way to bring communities together in their learning, which makes it more enjoyable and often times, even more helpful!

Volunteer Opportunities

Cultural centres often facilitate subject focused discussion groups and cultural events, which bring numerous volunteer opportunities. Volunteering opportunities can bring people closer, make them feel good through being engaged in beneficial community works, and for younger kids, they can look great

on applications. This can also be a great way to help a centre out if you can't donate money or goods. In many cases, though, your time is an even better donation!

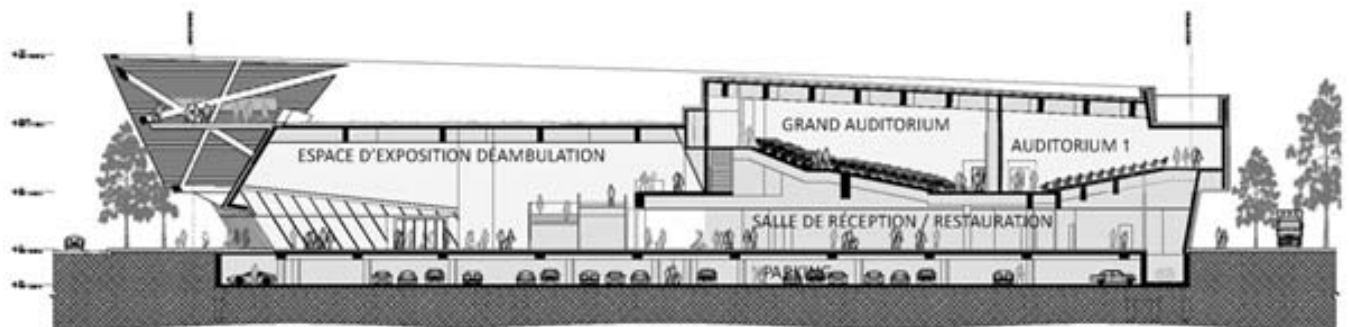
Learning

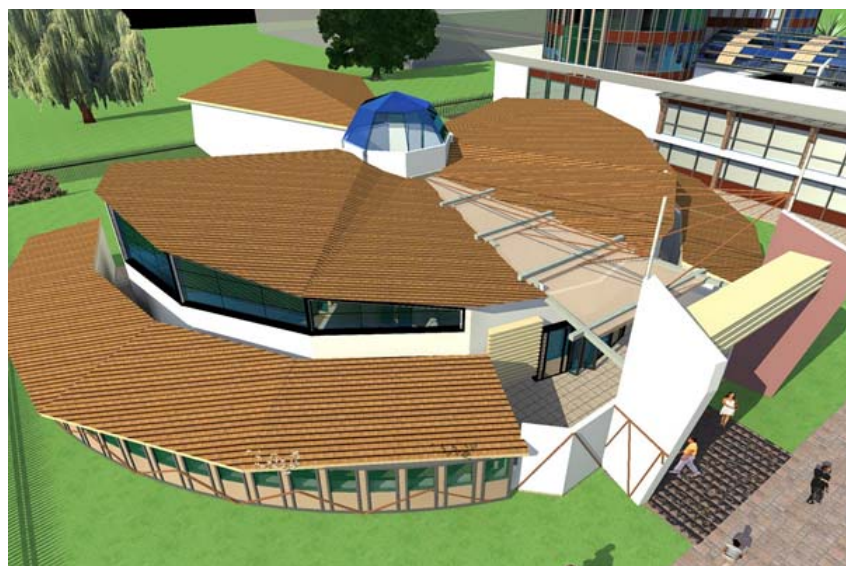
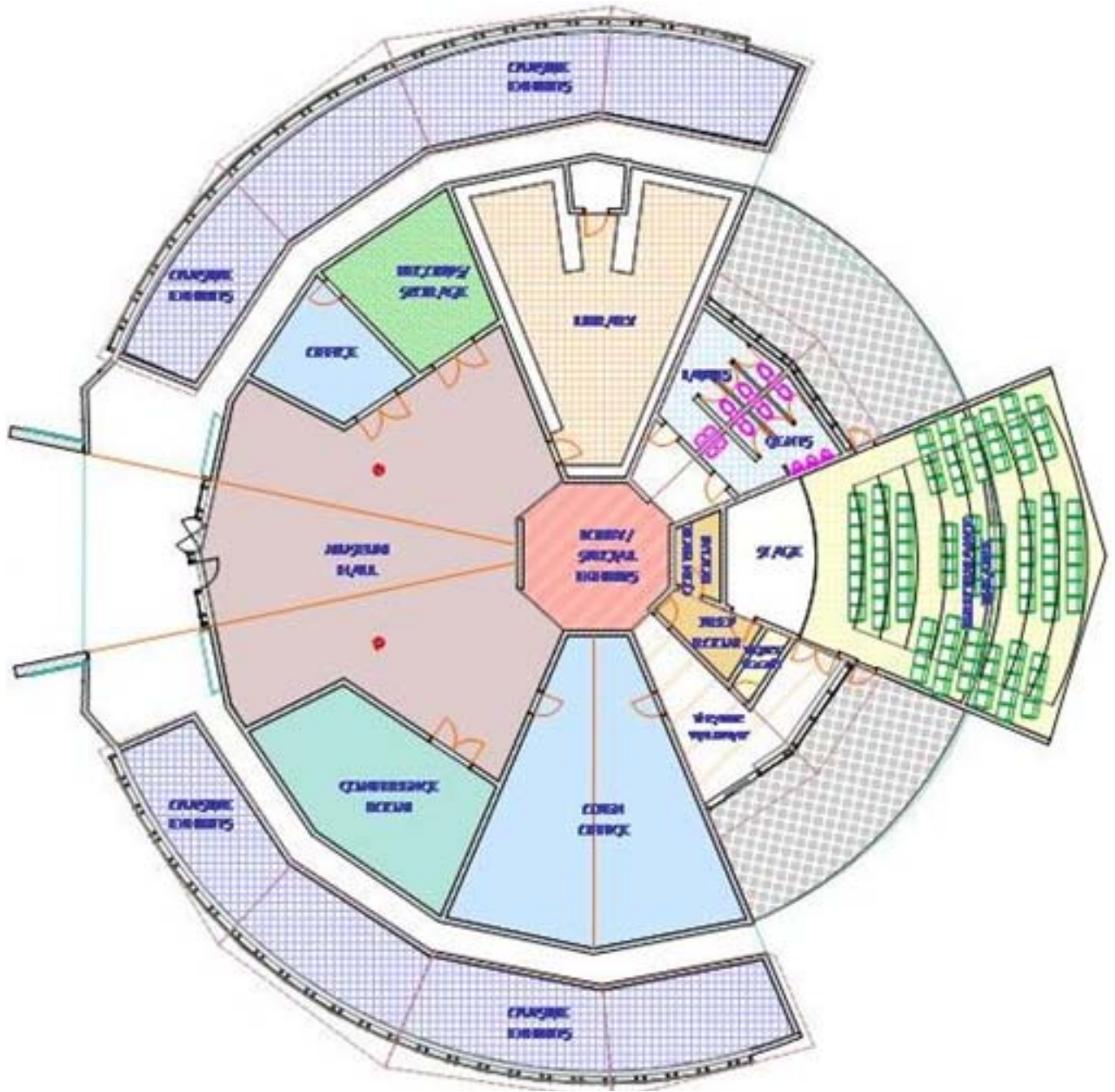
With a major proportion of most local communities being from other parts of the world, such as being of Asian cultural heritage, it should follow that many people would want to learn about Asian customs and Asian traditions. Similarly, where modern day immigration is occurring, there will be a diversity of ethnic heritage to be blended within the local traditional inhabitants. That is the primary purpose of a cultural centre: to enable the community to become aware of the diversity of culture that is within their environment through the use of events, festivals, and workshops. Further, with Pascas it is how we all can evolve through living Feelings First. The entire community is better for it.

Sense of Community

These centres are a great way to understand others within our community. Knowledge with truth is absolutely freeing, and it will bring community members together in a fun and constructive environment, which not many other things can do. Pascas centres provide a unique experience, and a way to step outside of one's comfort zone!

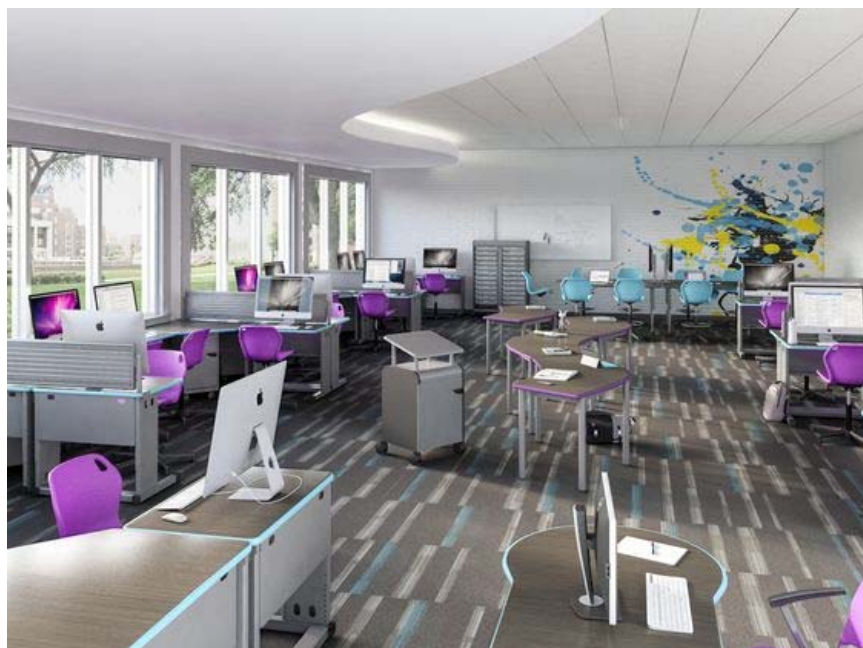
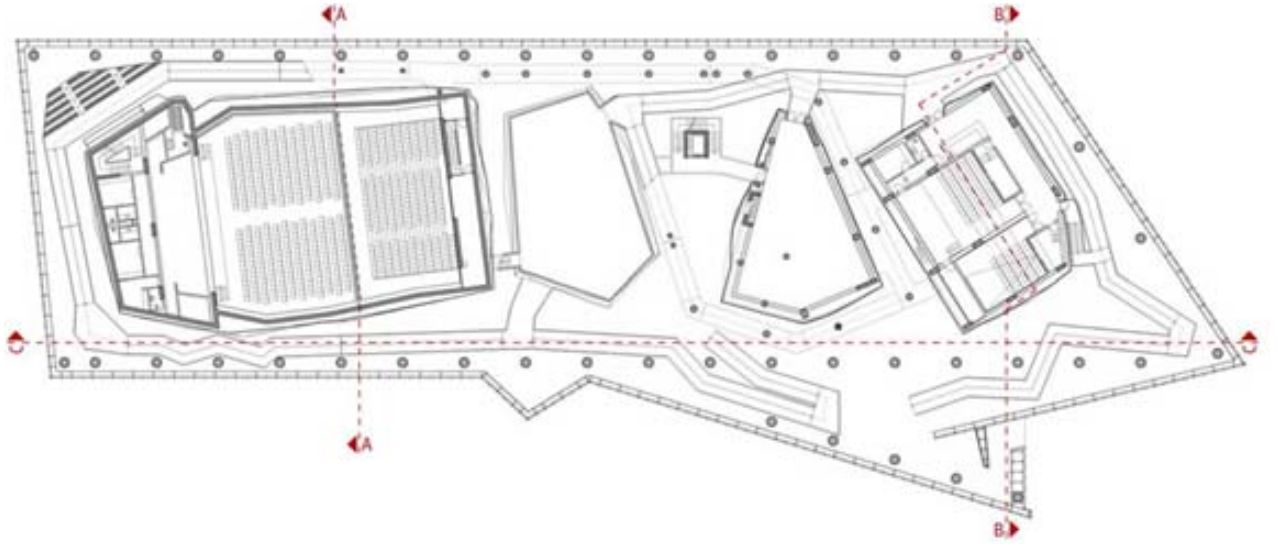
Do you have a cultural centre in your community? Have you seen any of these benefits?







OPEN AND CLOSED INTERIORS ENABLES A VARIETY OF ATMOSPHERES









Pascas WorldCare Cultural Centre – area / room names:

- | | | |
|---------------------------------------|---|--------------------|
| Main library and educational sectors | – | Chaldi College |
| Main meeting room | – | Celestial Room |
| Meeting rooms for quiet contemplation | – | Soul / Spirit Room |



UNITED EARTH

From this:



To this:

SUPERKIDS

Natural self Expression through Feelings

Self Empowering

Self Revealing

Self Loving



Feelings First

UNITED EARTH

Pascas WorldCare Cultural Centre is about striving for a United Earth. It is far more than a local community or cultural centre, yet it is all about the local community due to each of us being a member of Earth's humanity.

Having an understanding of our heritage and history as well as what is presently unfolding will free us all up to embrace the full potential of our wondrous journey forward.

Following the seeding of humanity on Earth, we were blessed with six different skin colours. Yes, the reason why we are of different skin colouring is that we were intentionally created with six different skin colourings. It is also intended that we progressively intermingle and blend our colouring. It was anticipated that this would occur some time ago, however, this is only recently beginning to take place through the massive volumes of people migrating and intermingling with communities in all the corners of the planet.

While we have national boundaries and myriads of personal boundaries that we have created then a United Earth will remain allusive. We have created systems upon systems to separate people. Nations conflict with nations; however, states within states compete with each other. This is further compounded by political systems creating parties. Populations are divided against each other due to the ludicrous concept of one political party competing with another political party. Communities need the best leaders possible, why halve the options by one half of the community competing against the other half. It is even more divisive than that, parties select from very limited numbers who is to represent them, our leadership is a donkey race at best. These patterns are repeated through all systems.

Consider the religious communities. Each one has the 'only book of truth', so they create special customs, clothing, hair styles, rituals and all maintain that 'I am special' persona. This has been compounded dramatically as there are some 4,300 different core religions now identified and when one considers all the minor offshoots, that extends to some 50,000 different religions.

The creators of this endless division of communities and peoples have been extraordinarily successful. However, their reign has ended. Yes, they no longer can influence and misguide humanity ever again.



Feelings First

Why the division and pitting of humanity against humanity has prevailed for thousands of years is due to elite spiritual leaders seducing humanity into believing that they could become all powerful through their minds. Humanity worships their individual minds and have suppressed and ignored their feelings.

Science has proven that one's mind cannot discern truth from false. Women are closer to their feelings and would have put aside this spiritual erroneous guidance should man not have suppressed the woman into a subservient role such a long time ago.

Now that it's understood that we are to embrace our feelings and then have our minds engaged to implement what our feelings lead us to. Our mind is spirit body based. Our feelings come from our soul which is always in truth.

We are to embrace our feelings, both good and bad, and long for the truth that they are to show us.

By living true to ourselves, true to our feelings, we are living true to God. It's that simple.

By living Feelings First humanity can step above and away from all inharmonious activities. In doing so we progressively will bring about physical health and a much desired way of living. The strain upon legal systems, courts, detention, etc., will be mitigated. Slowly humanity's embracement of 'war being socially acceptable' will be considered absurd and put aside, as will its armies. This will bring about a progressive removal of borders and national territories.

UNITED EARTH

will emerge as a possibility!

This is what a Pascas WorldCare Cultural Centre is to introduce to the community. A way of living that humanity abandoned some 200,000 years ago and is only now understood to be the only way that humanity can evolve.

The library of guidance within Pascas that has been assembled is unique. As much as 50,000 pages of material have been penned. Already, the scripts for ten movies are ready. Documentaries, short movies and full length movies will be produced. All of these writings, audio files and visual productions will be assembled in all of the major languages of the world. This is in stark contrast to all previous revelatory events when at best only several hundred pages of material were eventually made available.

The document, Universal Gift – Feeling Healing with Divine Love can only be said to be an overview, however, the reference material outlines the source of all there is to be understood in the Great U-Turn for humanity. www.pascashealth.com visit Library Download and Introduction Notes.

25 July 2018



Universal Gift ¹³

		Page
Preface		4
Introduction	MoC	5
1. The Gift – Feeling Healing with Divine Love	1,480	6
2. Great U-Turn for Humanity	1,490	14
3. Feeling Healing – Summation	1,490	42
4. Feeling Healing + Soul Healing	1,490	77
5. Healing Properties of Substances	1,490	127
6. An Extraordinary Journey	1,485	142
7. The Features of The Love and how One Receives It	1,480	168
8. Kids of the World – Living with The Love	1,485	194
9. The Real You – Meaning of Life	1,470	202
10. Luminosity of the Soul grows with The Love	1,460	225
11. All There Is	1,500	238
12. Feeling Healing, Divine Truth & Divine Love Points	1,495	245
13. Will or Free Will	1,480	264
14. Memory – Total Recall	1,455	273
15. Judgment	1,400	283
16. Forgiveness	1,410	289
17. Physical Health	1,380	297
18. Incarnation and Reincarnation	1,400	345
19. Transition, Death and Dying	1,415	359
20. Will this World ever Know	1,400	384
21. Largest Care Institutions of the World	1,360	391
22. Soul Emotions and Man’s Erroneous Emotions	1,400	396
23. Spiritual Teachings from the Start of Humanity	1,365	413
24. Second Coming	1,485	421
25. Spheres and the Celestial Heavens and Beyond	1,360	428
26. Longing for, Asking for, Meditating for, Praying for, and Receiving	1,480	453
27. Universal Gift	1,480	469
28. World Peace only with the Love	1,460	475
29. Overview	1,480	493

This document, overall, calibrates on Dr David Hawkins’ Map of Consciousness
at around perceived truth MoC 880 – relative truth potential MoC 1,484

FEELINGS FIRST LIVING

brings about

ONE
WORLD



and enables self expression via

FEELINGS FIRST For Kids

The average face of women across the world



Peruvian Polish Romanian Russian Samoan South African Mongolian



South Indian Spaniard Swedish English Ethiopian Filipino Latvian/Lithuanian



Uzbek Welsh West African Vietnamese Chinese Hungarian Mexican



Thai African American Afghan Japanese Korean Puerto Rican Taiwanese

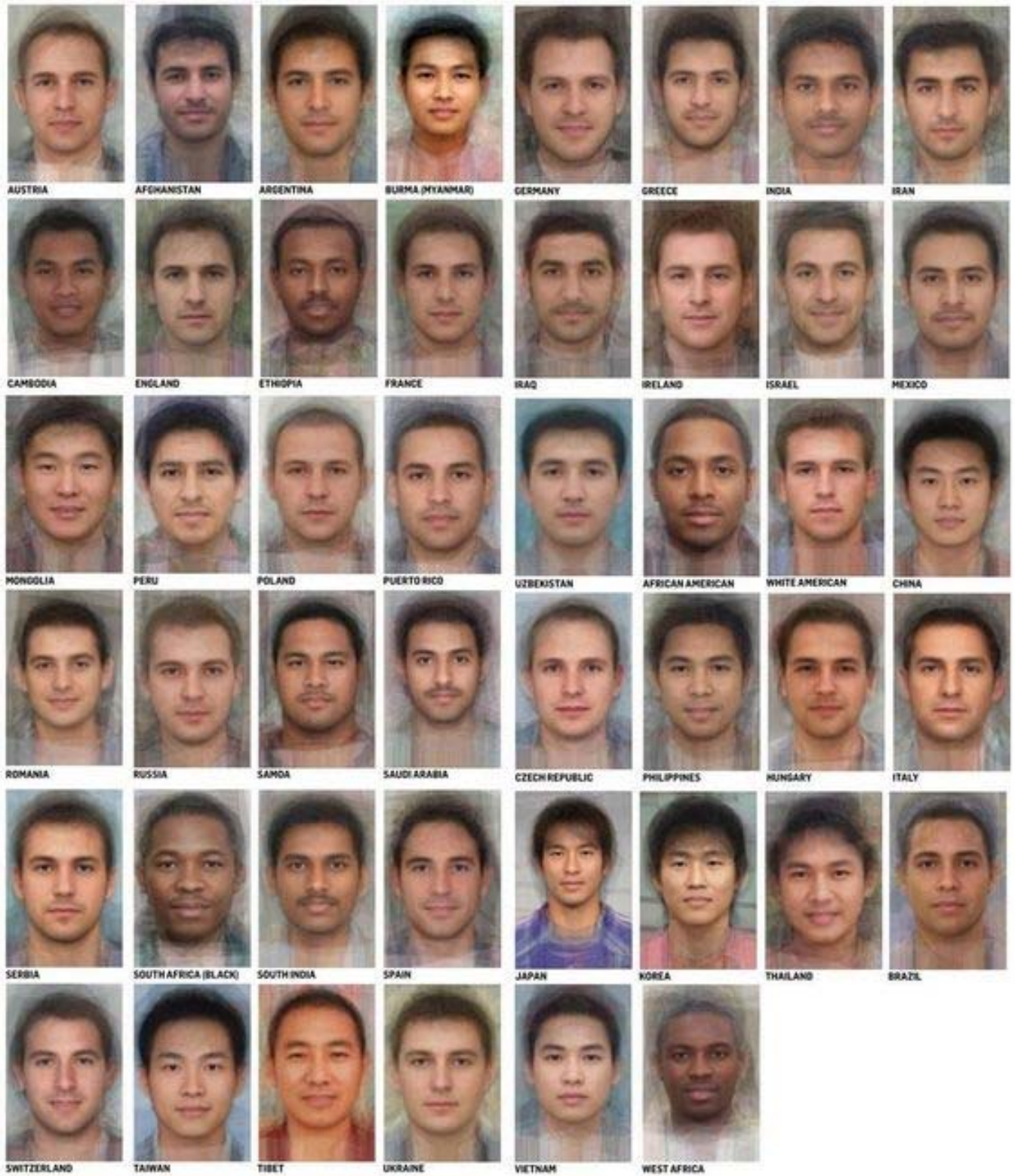


Finnish French German Central African Burmese Cambodian Swiss



Greek Indian Iranian Irish Israeli Italian

The average face of men across the world



BIOLOGICAL RACE and HUMAN DIVERSITY:

Heritable race seems as obvious as the colour of one's skin and the texture of their hair. A troublesome inheritance is often considered to be related to genes, race and human history.

Individuals commonly look upon themselves as being the physical body. Thus they polarise their existence upon their family culture and history. At the same time they tend to look at outsiders who may be distinctly different in colour, appearance, religious embracement and culture as being unacceptable.

We are not our physical body. And we are not of the nature and personality that our biological parents are. We each are a unique and beautiful soul connected by cords of light to a spirit body that is the template of the physical body that comes about by the commingling of the life forces of the body's physical parents. We are attracted to the newly forming embryo. Each and every one of us could have been drawn to be individualised into any family on the planet. We are individuals who commence our self awareness at the time of conception of the physical body of a baby as it commences its short life.



By being attracted to a specific race, culture and that family's religion does not make us any different to anyone else, other than the view we take on board for our physical life's journey. Think of how you would like to be treated. Then treat all other people the same way. Progress in love by developing loving kindness toward one's self, then to a good friend, then to a neutral person, then to a difficult person, and finally toward the entire universe of life!



From the moment of conception / incarnation we absorb the emotions of those within our environment, mostly those of our parents. By the time we are around seven years of age we will most likely reflect the emotional structure / soul condition of one or the other parent. Thus, generation after generation remain within the same soul condition envelope. Our gene structure reflects one's emotional and soul condition. Should we grow in love then genes will adjust to reflect this evolutionary development.

When the environment is one of anger, fear, apathy or such like, then the blaming on of outside circumstances is resorted to. Thus, generation after generation may blame outside circumstances and others for their unsatisfactory life predicaments, when it is of their own making.



Like Father – Like Son



Like Mother – Like Daughter

As individuals within family environments step away from the norms of the family and develop their love of self and the love for others then a shift away from generational patterns is achievable. This can be on significant scales, such as when whole communities embrace love and move into higher levels of soul condition. This can see positive major shifts in the social environment within communities. Educational systems may find students performing better, health systems may have less taxing demands on services, and policing services may have less call on their workforce. All in all, the prosperity of the community grows.

The greatest joy within observing such a development is that old grievances that have been handed down from generation to generation can and are put aside and more constructive agendas then dominate discussion.

**PASCAS
PAPERS**

<http://www.pascashealth.com/index.php/library.html>

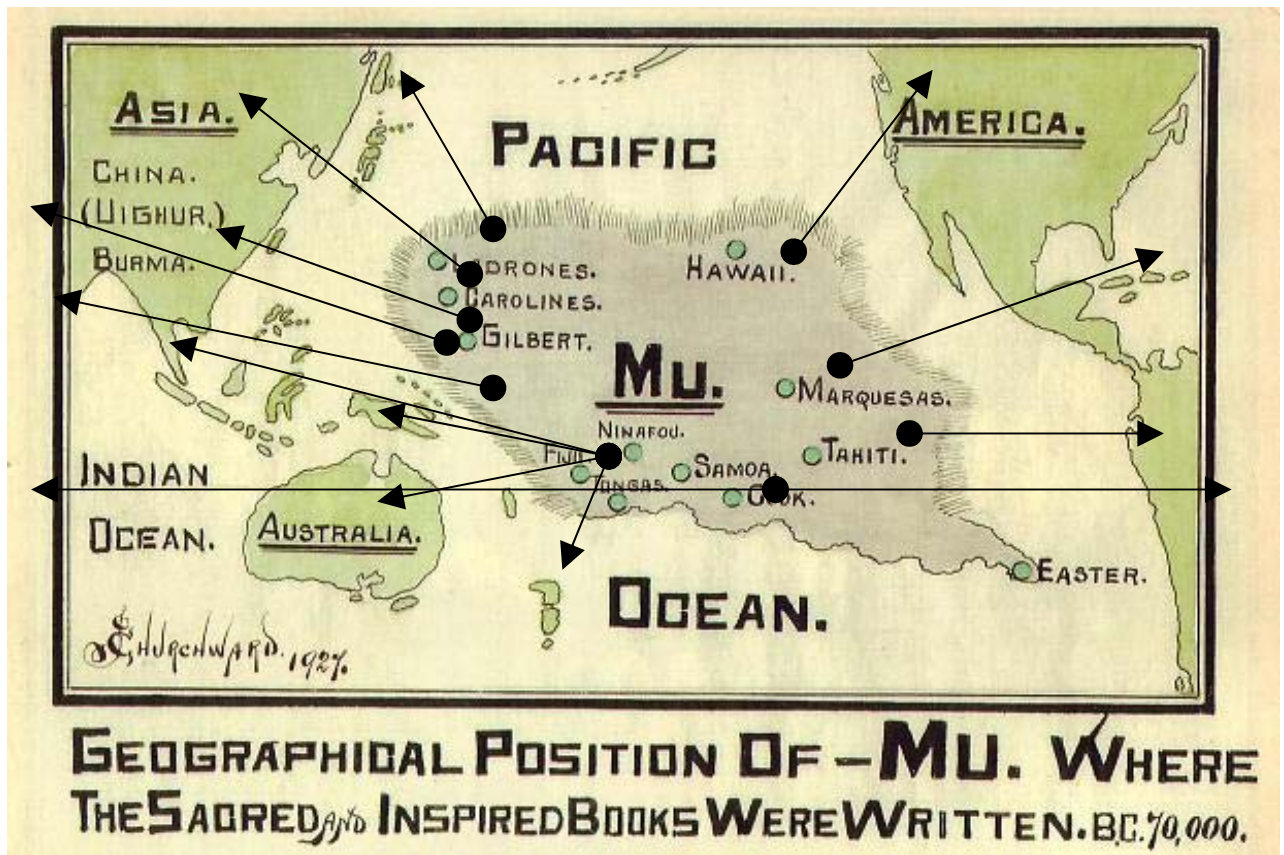
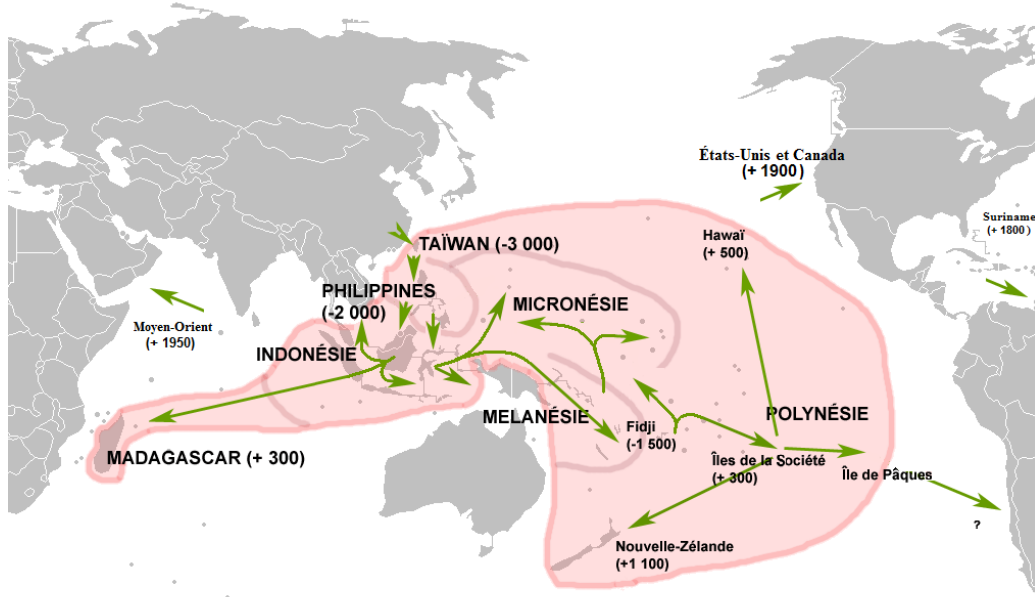
Library Download – Pascas Papers

All papers may be freely shared. The fortnightly mailouts are free to all, to be added into the mailout list, kindly provide your email address.

LEMURIA SHARED its PEOPLE and WISDOM:

The Naacals tell us: “The ten tribes were developed since man came on Earth. The people becoming crowded began to spread out. Some families went to far distant settlements; here they were virtually isolated from the rest of mankind. They were so few that sometimes brothers and sisters even had to marry to carry on. These close marriages gave them all a family likeness, so they became a type: time, climate, temperature and food completed the type and they became known as a tribe.” “A 100,000 years and more had gone on developing and perfecting these types called tribes in Mu before her destruction came, so that, when she went down, many of these types and colours had become very distinct.”

P50 The Children of Mu



Avonal Revelation

- We are to live Feelings First.
- We've been made to use our mind to live against many of our feelings.
- Our mind control commences at conception and is developed through our childhood.
- All the bad feelings we didn't express as we were growing up are still repressed inside us.
- And all such hidden, buried and unwanted feelings have to come out.
- And whilst they remain repressed within us, they will continue to make us feel bad and unloved.
- We get sick, depressed, suffer, have bad things happen to us because of our repressed childhood feelings.
- Humanity was brought into this state of living against itself by higher rebellious spirits.
- These Evil Ones caused the Rebellion and Default.
- We are made to rebel by default – as we have no idea we're doing it through our parenting in wrongness.
- We are all parented unlovingly – against ourselves, against our will.
- Some parenting in the wrongness is done with more love, yet it's all still wrong.
- To heal this unloving state within ourselves we have to do our Healing.
- Our Healing is our Feeling-Healing or Soul-Healing with the Divine Love.
- We can long to God for Their Divine Love, and this will help us with our Healing.
- God is our Heavenly Mother and Father, the Feminine Aspects of God having been kept hidden from us by the Evil Spirits.
- All humanity's religions and spiritual systems are designed to keep the wrongness going, to keep us away from God.
- Only by living Feelings First Spirituality, The New Way, can you become right, and truly find God.
- Long for the Divine Love.
- Long for the Truth of your Feelings.
- Accepting all you feel is accepting all of yourself, it's your greatest act of self-love.
- And wanting to know the truth of your feelings, is your next greatest act of self-love.
- Love yourself through your feeling-acceptance, and the Truth will set you Free!

31 May 1914 and ongoing

Feelings *first*



ONE
WORLD

PEACE and HARMONY or CONFLICT and WAR:

MAP OF CONSCIOUSNESS	
Level	Log
At-onement Transition	1080
ENLIGHTENMENT	700-1000
PEACE	600
JOY	540
LOVE	500
REASON	400
ACCEPTANCE	350
WILLINGNESS	310
NEUTRALITY	250
COURAGE	200
PRIDE	175
ANGER	150
DESIRE	125
FEAR	100
GRIEF	75
APATHY	50
GUILT	30
SHAME	20

Council of Elders
being those at-one with their
Indwelling Spirits.



Feelings first



Peace



Humanity that is above 500 on the Map of Consciousness scale is Feelings First orientated.

Conflict does not occur amongst these people. They engage with their soul based truths. Below 500 one is predominantly mind orientated!

Presently, humanity calibrates overall at around 212 and are engaged with their wayward controlling addicted minds. Through living feelings first with one's mind subordinated thereto, humanity will universally progress beyond conflict of any kind, particularly war.

Below 500 we have: ↓



MAP OF CONSCIOUSNESS

Map of Consciousness from Dr David R Hawkins, M.D., Ph.D. "Power vs Force".

Level	Log
ENLIGHTENMENT	700-1000
PEACE	600
JOY	540
LOVE	500
REASON	400
ACCEPTANCE	350
WILLINGNESS	310
NEUTRALITY	250
COURAGE	200
PRIDE	175
ANGER	150
DESIRE	125
FEAR	100
GRIEF	75
APATHY	50
GUILT	30
SHAME	20

PERSONALITY TRAITS:

Less than two dozen people on planet Earth.

Would not pick up a weapon let alone use it. These people gravitate to the health industry and humanitarian programs.

Debate and implement resolutions without argument and delay. 470

Debate and implement resolutions in due course. 440

Debate and implement resolutions with some degree of follow up generally needed. 410

Management supervision is generally necessary.

Politics become the hope for man's salvation.

Cause no harm to others starts to emerge. Power overrides force.

Illness is developed by those man erroneous emotions that calibrate 200 and lower.

Armies around the world function on pride. Force is now dominant, not power.

Harm of others prevails, self-interest prevails.

Totally self-reliant, not God reliant.

Fear dominates all motivation.

Suicide is possible and probable.

At these levels, seriously harming others for even trivial events appears to be justifiable.

Poverty, unemployment, illness, etc., this is living hell on Earth.

WE ARE NEVER MEANT TO BE ALONE! SOULMATES become SOUL-GROUPS!

Our soul individualises into two personalities, as a male and female, always. The two soul halves are soulmates. When the two personalities complete their Feeling Healing of their childhood suppression and injuries, then the two personalities will find each other, either whilst in the physical or in the Celestial Heaven spirit worlds.



The personality that each soul half is blessed with by our Heavenly Parents is the personality that we are to express throughout our journey for eternity. It is the suppression of the free expression imposed upon us by our parents that requires for each of us to under go our Feeling Healing. Whilst we are suppressing our true selves we do not connect with our soulmate.

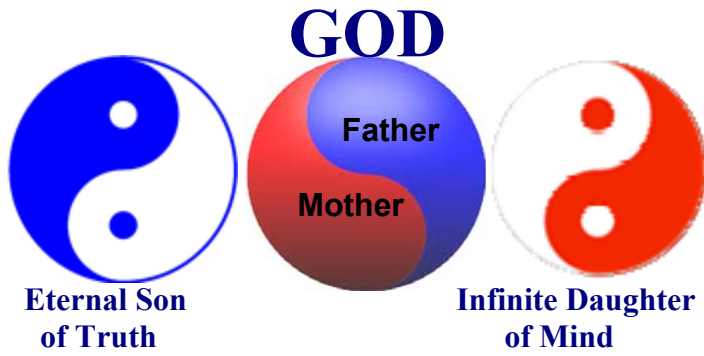


Soulmates form into soul-groups. Once in the Celestial soul condition, soul-groups form consisting always of twelve (12) soul pairs. A soul-group consists of twelve sets of soulmates, twenty four (24) individuals. When we progress beyond the Celestial Heavens, towards Paradise, the home of our Heavenly Parents, we do so as a soul-group of 24 personalities. We can achieve Celestial soul condition here on Earth and also form our soul-group here on Earth.



Now add to this scenario, soul-mates and soul-groups. All those who were Celestial would have met their soulmate and it would be the priority for them as soul-mates to be perfectly living true before they considered having children. And then these soul-pairs would link up with other soul-pairs and form soul-groups. It would be just a natural part of one's inner feelings and events in one's life that would lead one to do this. Then the whole soul-group would become a functioning *family* unit. Each of the couples would have their children, but the whole group would function in helping to share in the upbringing of all children. And this would then enable the children to be intimately involved with other people who would offer them the things that their parents could not.

Humanity is not meant to live and raise children just two parents struggling along trying to cope best they can. We are designed to be in small groups so that we can compound the love and support for and of each other.



CREATION of SOUL and SPIRIT:

God is *The Paradise Trinity* — the eternal Deity union of the Personalities: the Universal Mother and Father; the Eternal Son of Truth; and the Infinite Daughter Spirit of Mind.

The soul of each human personality (sons and daughters of truth) is existential, driving our personality expression in the experiential. The soul of each human finds truth by embracing one’s feelings and longing for the truth of them. We are to attain the Eternal Son of Truth. We are a creation of Truth.

The soul of angels is experiential, evolving through their experience by continually progressing in mind development. Angels are to attain the Infinite Daughter (Spirit) of Mind. Angels are a creation of Mind. Our soul is duplex (we have a soulmate) and is created by our Heavenly Parents. Through our Feeling Healing we perfect ourselves enabling the union with our soulmate, as we progress in truth up through the Mansion Worlds, celestial heavens and all the way to Paradise.

The soul of angels is also duplex, yet of the mind, and they progress in mind evolution to Paradise. Animals, plants and nature spirits are also creations of Mind.

Neither we nor animals reincarnate. We never die; upon death, we move into the spirit Mansion Worlds on our journey to Paradise. When animals and plants die, be they the tiny microbe to the mighty elephants of the land and the whales of the ocean, their spirit energy returns to the Spirit Collective Energy. And from this energy are drawn other animals and the nature spirits, who then in turn move onto becoming angels through increasing mind experience.

A nature spirit is an angel in waiting.



Feeling Pathway

Mind Pathway



Soulmate Pair



Angel



Spirit Person



Nature Spirit



WE EACH have a Nature Spirit pair, Spirit Guide pair and an Angelic Pair:

For those doing their Healing or are interested in doing it will from that time have their own personal angels, spirit guides and nature spirits with them, with whom they are to develop their own relationships should they want to. It is not about ‘sharing’ the same angels or guides or nature spirits, it is about you relating specifically to your ‘own’ ones because they are provided for YOU. It’s all for you, to maximise the experiences we each need.



We are all to have our own pure relationships. And it’s the same of course in life with your friends, however over there, in spirit, dealing with Nature Spirits, Spirit Guides, and Angels, it’s more personal and private and ‘JUST FOR YOU’. So we have our own separate, unique relationships.

For example, Nature Spirit Verna has been assigned to be specifically and only with James, and she ain’t going to be assigned to anyone else, so she won’t be sharing herself around.

This is SO IMPORTANT to understand so that in future there won’t be all these people claiming to be speaking with Verna or Mary Magdalene or Jesus or Nanna Beth or anyone else who is part of it all in such capacity. Mary M and Jesus have spoken with James as they have, making it quite clear he is all they are speaking with.

We each have a band of a Nature Spirit pair, Spirit Guide pair, and an Angelic pair, each pair being in their soulmate relationship. Even though we are ascending mortals having a soulmate, even our soulmate has his or her own group of six personalities assisting him or her. Our assigned Nature Spirits do not continue with us into spirit, our Spirit Guides may for a time assist upon entry to the spirit Mansion Worlds, however, our Angelic pair continue with us for eternity.

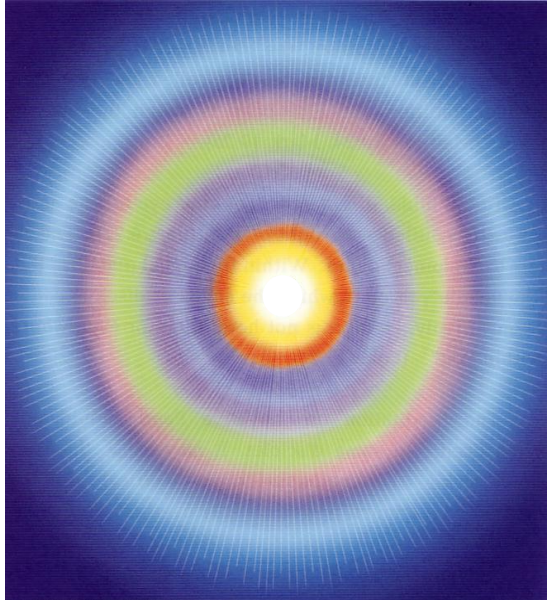


Feelings first

DIMENSIONS of ONE'S EXISTENCE:

Our SOUL IS NOT ENSOULD IN OUR SPIRIT BODY. Our soul exists existentially in a whole different level or plane or place or dimension of being – 'soul land'. It doesn't exist in Creation, it's not experiential like Creation is. The soul, all souls, help create their part of Creation by expressing their personalities into Creation, and then by having their personalities do things (further create) in Creation.

SOUL exists existentially



Our Physical Body and our Spirit Body are of Creation, being linked together by cords of light as are the two spirit bodies, male and female, to the one Soul.



One's unique personality is soul based. Our unique soul expresses its unique personality through the two spirit bodies and physical bodies expressing both the male and female aspects.

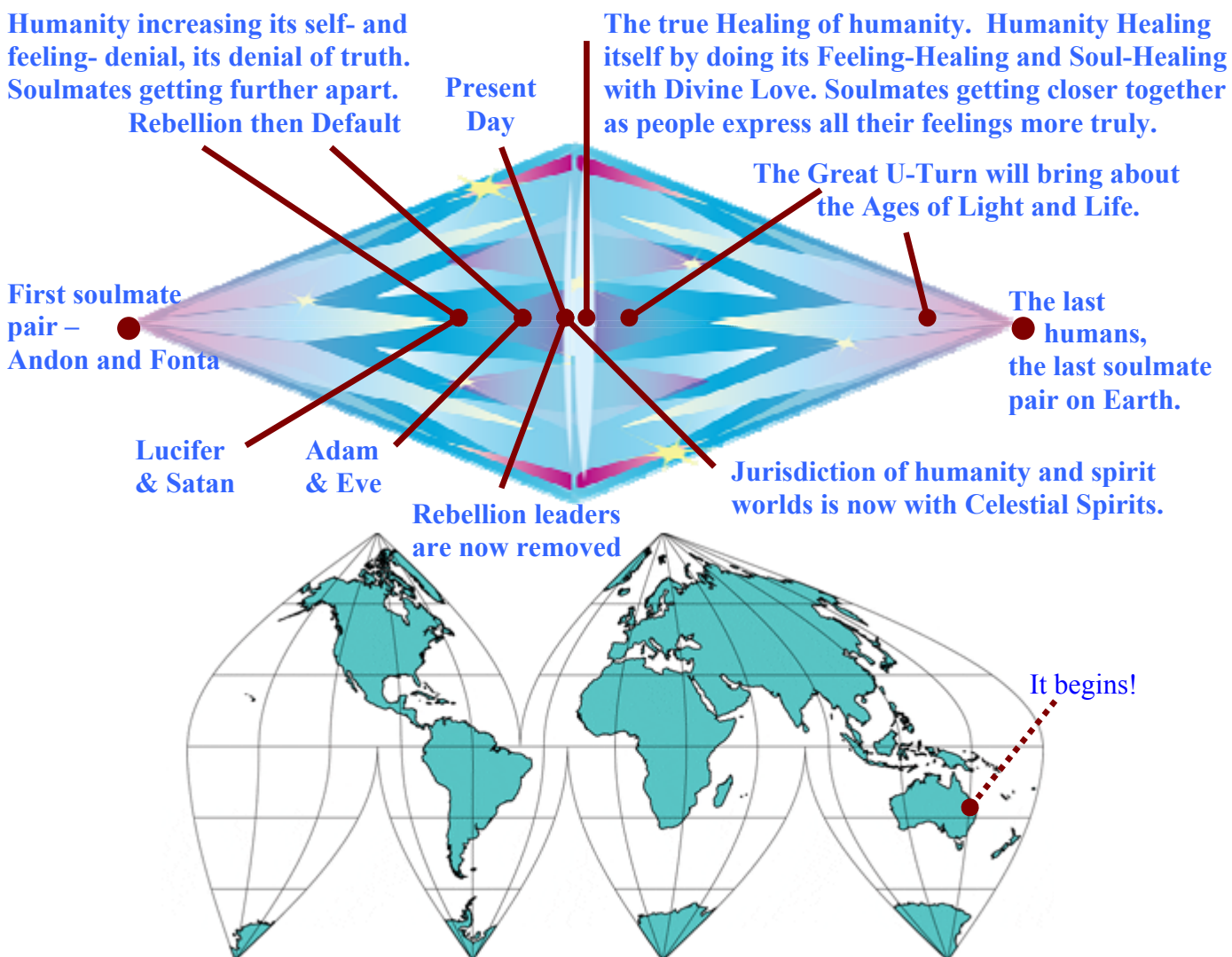
PERSONALITY



**Our soul is the centre of our personality.
We are children of our Heavenly Parents.
Our soul manifests a male and
female personality - it is a duplex!**

JOURNEY of HUMANITY into and through the GREAT U-TURN:

Humanity reaching its most evilness, the most lost, the most separation of soulmates. Humanity can begin its Healing. The Great U-Turn begins, the dawning of the Spiritual Age.



This is the Great U-Turn. We are to feel and live by our feelings and express our feelings, our mind will follow in support, not the other way around.

Feelings First, you can be sure about that! **Once women get that message and start living it, then the tide will really change**, with men either deciding to support them by looking to their own feelings or being left on the outer wondering what the fuss is all about.

The feminine light is going to sweep through humanity and purge it of all the yuk and darkness, helping to bring the whole of humanity back into a nurturing loving mother state of being, from which the supportive, caring father can support her and together they can make the world great again, they can bring humanity up into its natural love perfection whilst at the same time offer those people who want to spiritually grow the truths of how to embrace the Divine Love and move on to the Celestial level.

By living true to oneself, true to our feelings, we are living true to God. It's that simple.
(Passage in blue calibrates on the Map of Consciousness at 1,500)

KINDY CARE

WELCOME!



SAFE SANCTUARIES

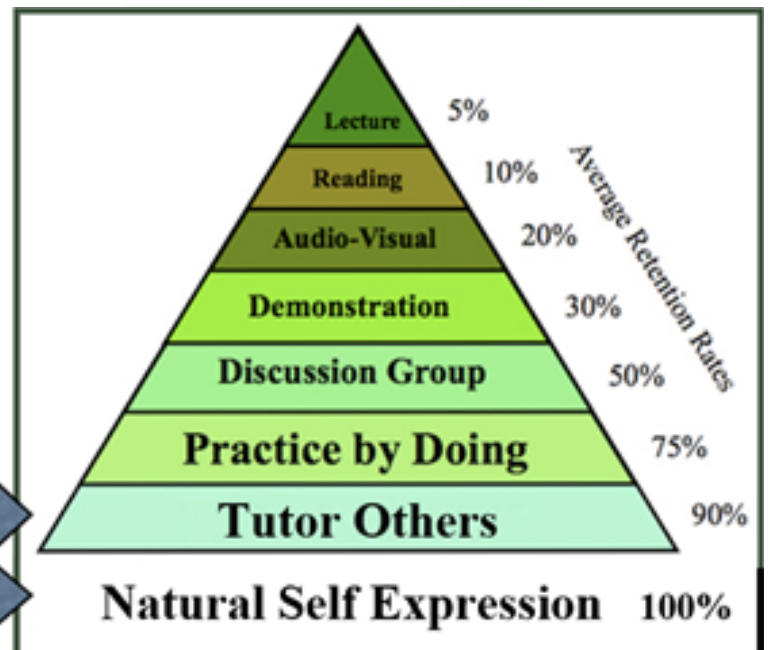
Chaldi Child Care Centre
Kindergarten

FEELINGS FIRST For Kids

CHALDI COLLEGE



The Learning Pyramid



SUPERKIDS

Natural self Expression through Feelings

Self Empowering

Self Revealing

Self Loving



Feelings First

