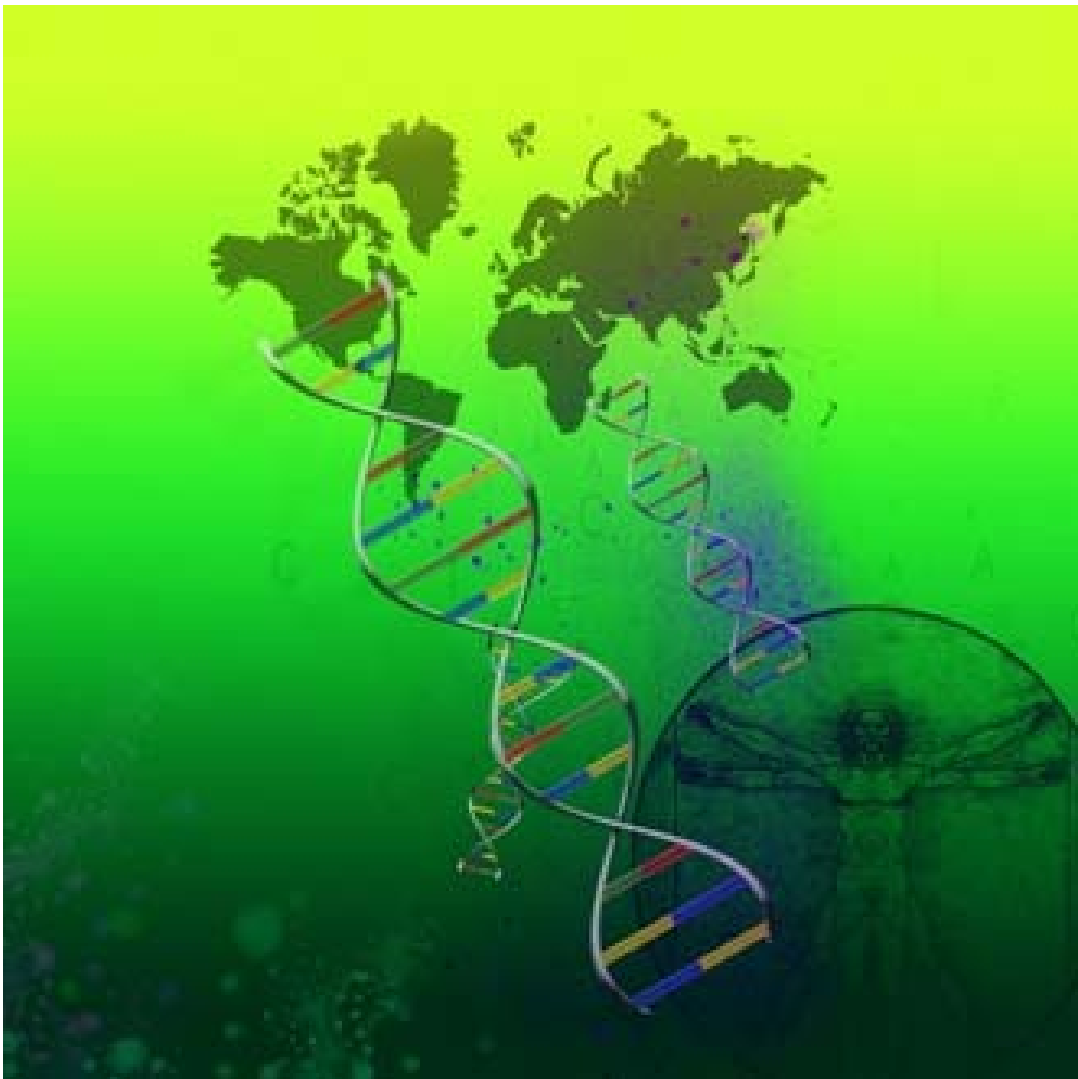


# PASCAS CARE

## INTEGRATED PANDEMIC RESPONSE



**“Peace And Spirit Creating Alternative Solutions”**

**PASCAS FOUNDATION (Aust) Ltd**  
**ABN 23 133 271 593**

**Queensland, Australia**

**Pascas Foundation is a not for profit organisation**

**Em: [info@pascasworldcare.com](mailto:info@pascasworldcare.com)**

**Em: [info@pascashealth.com](mailto:info@pascashealth.com)**

**[www.pascasworldcare.com](http://www.pascasworldcare.com) [www.pascashealth.com](http://www.pascashealth.com)**

## PASCAS INTRODUCTION:

Documents assembled by Pascas are provided for your individual assessment and exploration. The contents are sourced from a variety of avenues and publications. Every endeavour is made to determine that the contents are of the highest level of truth and veracity. At all times we ask that you go within yourself, to ascertain for yourself, how the contents resonate with you.

Pascas provides these notes and observations to assist us all in the development and growth of our own pathways and consciousness. Pascas does not hold these contents as dogma. Pascas is about looking within oneself. Much of what we are observing is new to us readers and thus, we consider that you will take on board that which resonates with you, investigate further those items of interest, and discard that which does not feel appropriate to you.

Kinesiological muscle testing, as developed by Dr David R Hawkins and quantified by his Map of Consciousness (MOC) table, has been used to ascertain the possible level of truth of documents. Such tested calibration levels appear within the document. We ask that you consider testing same for yourself. The technique and process is outlined within Pascas documents, such as Pascas Care – Energy Level of Food. From each person’s perspective, results may vary somewhat. The calibration is offered as a guide only and just another tool to assist in considering the possibilities. As a contrast, consider using this technique to test the level of truth of your local daily newspaper.

Contents are not to be interpreted as an independent guide to self-healing. The information sourced herein is not from a doctor or doctors, and any information provided in this document should not be in lieu of consultation with your physician, doctor, or other health care professional. Pascas, nor anyone associated with this document, does not assume any responsibility whatsoever for the results of any application or use of any process, technique, compound or potion as described within this document.

The sources of contents are noted throughout the document. In doing so, we acknowledge the importance of these sources and encourage our readers to consider further these sources. Should we have infringed upon a copyright pertaining to content, graphics and or pictures, we apologise. In such cases, we will endeavour to make the appropriate notations within the documents that we have assembled as a service via our not for profit arm, to our interested community.

We offer all contents in love and with the fullness of grace, which is intended to flow to readers who join us upon this fascinating journey throughout this incredible changing era we are all experiencing.

Living Feelings First, *John.*



***“Never can one man do more for another man than by making it known of the availability of the Feeling Healing process and Divine Love.” JD***

## **PANDEMIC ISSUES:**

Pandemic issues are in various categories:

1. Natural disasters such as earthquakes, floods, volcanoes, tsunamis, etc. They are not 'acts of God', God does not need anger management counselling.
2. War victims and support survivors from chemical attack, nuclear attack, terrorist attack, contamination issues. Support for the re-establishment of the life of refugees and victims.
3. Trauma management post a major incident.
4. Pandemic illnesses that evolve rapidly and have enormous impact upon communities, such as influenza and new transmittable diseases.
5. Established pandemic illnesses, such as HIV / AIDs, tuberculosis, malaria.
6. More subtle but still serious illnesses, such as obesity, diabetes, etc.
7. Social issues such as child abuse, substance abuse such as alcoholism and social drugs.

Fundamentally, whilst someone does not have available clean air, pure water, nutritious food and safe lodging, that person cannot and does not have the resources to realise one's spirituality. Thus, it is the focus of Pascas WorldCare to assist as possible, the return or the establishment of an environment where men, women and children can live in an environment that provides clean air, potable water, nutritious food and safe lodging, which then enables the pursuit of spiritual advancement.

In order for humanity to evolve, we must work together, not alone. We might not represent the mainstream elements, such as that of the Hindu, Buddhist and Islamic traditions, but we are the evolutionaries for this particular spiritual pilgrimage. We are among the community that can be referred to as the 'experienced ones' as we are 'old souls'.

We are building a movement with such momentum that it is more powerful than the individuals involved and will survive beyond the individuals involved.

To succeed, we must work as one.

As we carry out this work, it is essential that the fate of those who come after us are always in our focus and in our hearts. The vast majority of the humans who have lived on this Earth were never well known, but their story is just as important as yours and ours. We are asking you to make your story known, we are asking you to be leaders in this teaching and to work with others who are willing to be teachers along side of you.

Further, we as a community will do much in our lifetimes that will change humanity forever.

So, what will we do and how can we do it?



## **PANDEMIC SUPPORT PLANNING:**

As the expansion of Pascas Care Centres advances with the support of regional Pascas Health Sanctuaries and related educational and commercial opportunities for remote and emerging communities, then the capabilities of Pascas to assist in any of the crises resulting from the various levels of pandemics will become constructive and meaningful.

Policy development and technology deployment will be assisted by a focus group – Pandemic Guidance Unit with the following foci:

Medical  
Dental  
Microbiology  
Pharmacology  
Energy Sciences  
Accounting

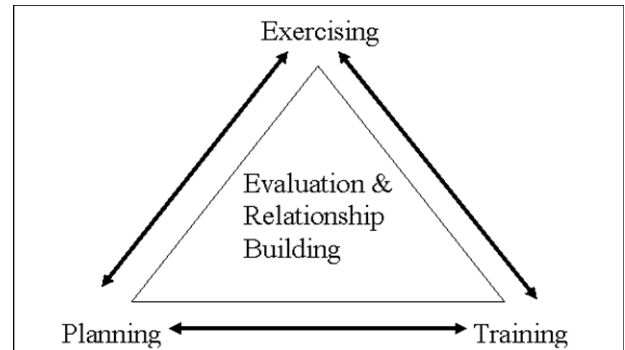
In time, it is our agenda to develop a reasonable protocol for integrated pandemic response that will serve humanity more effectively than what is currently offered.

As there are numerous modalities to consider, the focus is to be upon those that are most easily and effectively applied.

### **WE ARE TO LISTEN!**

We are to seek counsel of those in the areas of need and we are to seek their involvement in every step of each project and initiative we are to implement. The local folks must invite us in and we must involve them as much as possible in every aspect of what we are to provide. They will teach us more than our wildest dreams and we will all share in the joy of what we can collectively create and deliver.

Thus we need to seek contributions and advice from each and every person who considers this agenda. We welcome your comments, your discoveries, your wisdom and your support in all respects.



# Pascas Care Centre



**PASCAS CARE CENTRES to be operating between years five to ten: 4,000**  
**Program has been expanded to all countries around the world.**

## REGIONS:

Africa		India Sub-Continent		Australia Pacific		South America	
South Africa	285	Afghanistan	130	Australia	190	Venezuela	50
Zimbabwe	30	Pakistan	270	New Zealand	160	Guyana	45
Liberia	50	India	450	Pacific Islands	290	Colombia	65
Cote D Ivoire	35	Sri Lanka	50		<b>640</b>	Surinam	85
Ghana	65		<b>900</b>	America		Ecuador	40
Togo	15			<b>US Indian</b>	<b>400</b>	Peru	30
Benin	20					Bolivia	55
Nigeria	50					Argentina	70
Mali	40					Paraguay	65
Guinea	80					Chile	70
other	20					Brazil	195
						other	70
<b>Africa</b>	<b>690</b>	<b>Other</b>	<b>290</b>	<b>Caribbean</b>	<b>200</b>	<b>Sth America</b>	<b>840</b>
<b>Madagascar</b>	<b>40</b>						

Maxi Clinics	3%
<b>Standard Clinics</b>	<b>94%</b>
Micro Clinics	3%

**Average number of employees per clinic including medicos: 60**

**World Total 4,000**



# Pascas Care Centre



PASCAS HEALTH CLINIC – THREE UNITS IN ONE:

<p><b>PASCAS</b></p> <p><b>CARE</b></p> <p><b>CENTRE</b></p>	<p><b>Pascas Cafe</b> with <b>Raw Power!</b></p> <p><b>CHALDI</b></p> <p><b>COLLEGE</b></p>
--------------------------------------------------------------	-----------------------------------------------------------------------------------------------------

<p><b>Medical Clinic</b></p> <p><b>Consultations</b></p> <p><b>Day Care</b></p> <p><b>Treatment</b></p>
---------------------------------------------------------------------------------------------------------



Average number of employees per clinic including medicos: 25  
 day care treatment facility: 20  
 nutrition café and community services: 15  
 Total: 60

# PASCAS HEALTH SANCTUARY

## GLOBAL CENTRES of EXCELLENCE

support and administration for regional  
clinics

**Brazil**      **Nigeria**      **Australia**  
**South Africa**



## **SOCIETIES HABITUAL BARRIERS:**

Whether you are talking about delivery of antivirals or alternative therapies, your weak link is always going to be delivery to the masses and then assessment of efficacy. In the case of antivirals, you now have the generation of antiviral resistant strains; again a logistical issue, though secondary to delivery of intervention.

The masses who will first be susceptible and affected are going to be the immuno-challenged i.e., not fully immunocompromised, but not immunologically robust. We understand there is agreement on this. Where we see challenges is when people in general see themselves as too busy to eat (good or even bad food), too busy to exercise, too busy to remember to pop a single multi-vitamin, you're not likely to sell a regimen as described, to those same masses.

This discipline is not what the masses want; the masses always want a one-pill solution. The adoption of this sort of discipline will come with the shift of consciousness, together with a realization that western medicine is not going to fix the problem. When there is a critical mass of those critical thinkers, we will manage to deliver those options.

Somehow, humanity needs to be educated en masse before any sort of pandemic and societal resiliency will take hold. We live in a society where the onus is on all levels of government to protect society and provide solutions. And when they fail, there will be litigation. This is the state of our society, especially in the US. The notion of self-help to the degree that those in the know advise is certainly valuable, but it will currently only appeal to and become part of the lives of relatively few people and their families in the next few years. Not enough to stem the tide of a pandemic.

Where we come from is personally seeing the reactions of educated people when we speak of energy medicine, addition of a couple of tablespoons of maca or ashwaganda to one's diet. Ironically those are viewed as foreign substances, whereas ibuprofen, etc. are not seen as xenobiotics at all!! But, if you add on, "ashwaganda will help you to lose weight", then you might have some traction!

These are not stupid people; it's just that they are educated by the media and the mainstream medical practice, which has a vast propaganda machine attached to it. Let's not forget pharma... All else beyond mainstream is voodoo... And the machine makes sure you know its voodoo!

This needs to be overcome. Perhaps when the benefits are manifest in the early adapters, the mainstream will fall into place.

It may be that education to a sufficient degree that will allow people to dip their toe into the water of holistic therapy is the first approach. A "carrot" that delivers some benefits from the onset. As they improve and see benefit, they will learn and participate more of their own accord. Leading to greater participation in what we are to prescribe. As with all things, there is the need to overcome what seems foreign and THEN, the element of what's in it for me? And why this (course of action) over a Centrum multivitamin (which is cheaper and not so complicated!)?



## **IMMUNITY STRENGTHENING as PREVENTION AGAINST a PANDEMIC:**

There are scores of possibilities, some with much more proof than others. The best approach is prevention by keeping the immune system healthy. At times of increased risk, the following is recommended:

### **ENHANCING IMMUNE FUNCTION**

An excellent multivitamin / mineral, with 100 mg B Complex such as my Essentials.

Youth Formula which provides 2 grams vitamin C, 1 gram of MSM with 60 mcg of beta 1,3 glucan and 60 mcg of molybdenum.

Magnesium lotion, 2 tsp on skin twice daily.

Daily stimulation of the Ring of Fire points.

Vitamin D<sub>3</sub>, 2000 units daily.

Glutamine powder, 2 tablespoons.

Glucan, 2 tablespoons.

Co Q 10 400 mg.

Megadapt, 4 daily (Om-Chi Herbs).

Argentyn 23 (the best colloidal silver), at least one teaspoon twice daily.

Maxogenol (both pycnogenols and Co-Q 10), 4 daily.

Thymuril (thymus extract) 4 daily.

Coconut oil, 3 tablespoons daily.

Castor Oil packs to the abdomen or castor oil baths.

Saunas daily.

Autogenic Training (Basic Schultz tape).

90 DAYS TO STRESS-FREE LIVING, the book / program by Dr Norm Shealy.

The clear leaders in the midst of an epidemic, being an abridged version for the above, are:

Vitamin C, 100 grams IV, Argentyn 23, two tablespoons twice daily, Castor oil baths, Echinacea, Aswagandah, Astaxathin, Co Q 10



## **PANDEMIC INFLUENZA LOGISTICS:**

Pandemic Influenza Committee (PIC) antiviral administration requires laboratory preparedness and response readiness: critical services, business continuity such as reagent stockpiling, testing strategies, surveillance strategies for pandemic versus seasonal strains, and antiviral resistance. Much is possible, the rest is politically driven. (Antivirals)

Handing out antivirals is going to be chaotic at best. Huge line ups! And since there are presently only about 55M doses – or enough to cover 17% of the US population, there are major logistic issues.

Simple and clean protocols are best for adoptability even of early adapters. We need to open this with simple methods that people will buy into and adopt, demonstrating clear results! Then we can push more buttons afterward and exploit the findings and experience of general immunity enhancement. These processes are never simple and require slow steady progress with small and sure steps.

If the masses are to be engaged to prevent the wide and rapid spread of an infectious agent, the message must be Simple, Inexpensive and Non too disruptive to their lifestyle, if possible. While the educated or motivated few may appreciate the benefits of boosting and maintaining a healthy immune system with a multi-prong supplement and exercise program, the masses still demand the, "one pill for every ill" approach. Or, add it to the water! Darn, that used to work until the bottled water craze began.

Antivirals will offer only a "feel good" or "we did something" approach. With increasing antiviral resistance, inadequate supply (despite stockpiling) and a distribution "plan" that will be chucked at with the first sign of an epidemic (never mind a pandemic), antiviral medications will be ineffective if the spread is rapid or multi-centred. Pre-emptive or preventative planning offers the best hope.

Although there is support for Flumadine or similar anti-virals, it is highly unlikely that there could be adequate supplies for even half the population. Of course, the same is true for an immune boosting regime. And then there is the obvious question of whether any anti-viral currently available would be effective.

### **Homeopathy**

#### **What is new and radically different here is this:**

[www.healingdownloads.com](http://www.healingdownloads.com)  
[www.vitalremedies.com](http://www.vitalremedies.com)  
[www.birdfluhealing.com](http://www.birdfluhealing.com)

Normally homeopathy and holistic therapies generally approach the individual and help resolve internal stresses, rebalance the energies within, so self healing is able to act. But this is not specific to the disease and often this is simply not enough, as the disease needs direct, targeted healing.

Here, we address the self-healing of disease directly with exact resonances which activate healing specifically for the disease only.

These new remedies / resonances have been shown to be effective in helping to treat advanced diseases that have otherwise continued despite the very best homeopathic, holistic or conventional treatment.

This is no magic short cut, however, and usually both individual based and disease based treatments go hand in hand. Recovery from advanced diseases requires skilled support which homeopaths and other holistic therapists are well equipped to provide. These disease remedies are an extra tool, a new dimension, in healing diseases.

Homeopaths have had some great results across the board and across the world with these remedies in treating or healing people. Some examples: multiple sclerosis, Parkinson's disease, chronic fatigue syndrome (CFS/ME), cancer, alcoholism, schizophrenia, diabetes, eczema, asthma, epilepsy, gout, autism, AIDS, malaria, gonorrhoea, herpes, burns, injury, vaccination toxicity, penicillin toxicity, Lyme's disease, and in treating the traumas of genocide trauma, war trauma, rape trauma, and natural catastrophe, tsunamis, post traumatic stress disorders (PTSD), in various forms.

This new breakthrough effectively applies to all diseases.

One very experienced homeopath reported an 80% success rate in 25 cases of chronic disease using these remedies and conventional homeopathy together.

Self-help in non-serious conditions and in the beginning stages of disease is also a possibility for those with a holistic understanding. Herpes, warts, Candida, flu, shingles, various traumas, teething, toothache and the like have proved popular.

Peter Chappell is the person behind this breakthrough and he describes below how it occurred.



Peter was previously involved as the creative driving force in putting resonance healing in the form of homeopathy on the map in around fifteen countries where previously it did not exist.

During this time, he worked in and ran master classes and teaching clinics in many diverse countries and cultures, for example, Beirut in Lebanon, Cairo in Egypt, Honduras, Sarajevo in Bosnia, Novi Sad and Belgrade in Yugoslavia, Brno and Prague in the Czech Republic, Bucharest in Romania (including an ongoing clinical program offering treatment for free in twelve orphanages housing thousands of children), Sofia in Bulgaria, Bratislava in Slovakia, Budapest in Hungary, Malta, Alchopa, Nicaragua, Addis Ababa in Ethiopia, Zagreb and Split in Croatia, Malta, etc.

Peter discovered, in 2000, that his burning, overwhelming, heart-felt passion was to do something about HIV and AIDS. However, there was no logical reason why he should stand any chance at all to do this so he mentally resisted this notion for a year.

In July 2001, he finally understood that this was his only life goal and set about achieving it. He extended his mortgage, quit his UK practice and went to work in Ethiopia in October 2001.

In early 2002, after a lot of experience seeing AIDS patients in Ethiopia, a lot of thought, and whilst working with AIDS patients in a clinic there, he managed to reinvent resonance healing in a new way such that it revitalised the immune system. With this new form of healing / resonance, people of all ages with

AIDS, who were otherwise healthy improved within two weeks. People began to get up from their beds and started improving. Slowly it became clear that everyone improved, almost without exception.

The clinical test results became more and more certain with time, and this process is ongoing. People all over Africa recover reliably from AIDS with this system.

From these results, Peter and his colleagues are now applying this new approach to work for all diseases with some remarkable successes reported.

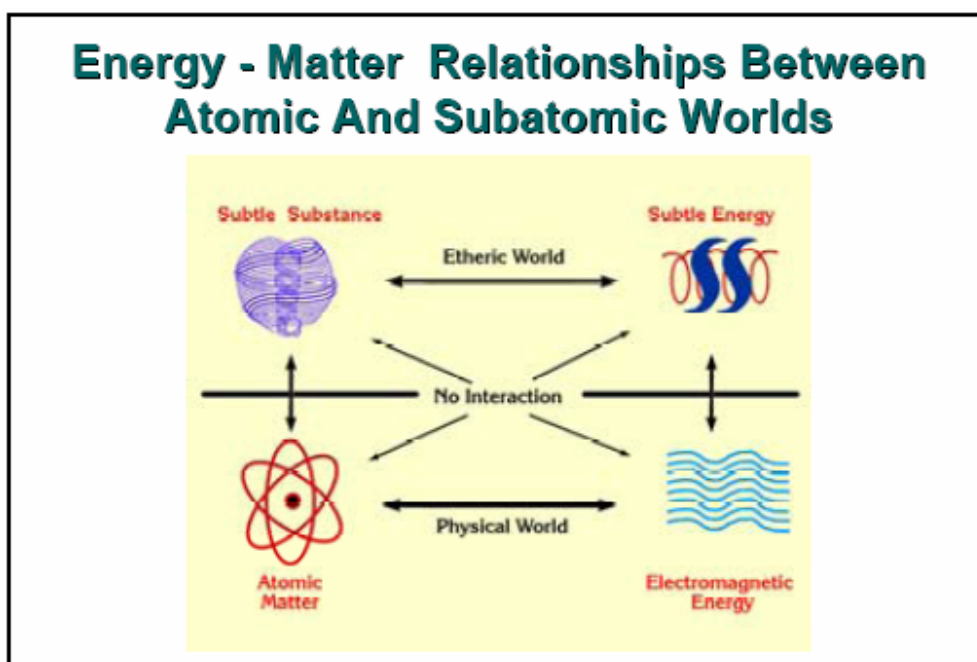


### Energy Tools International LLC

Dr Yury Kronn  
www.energytoolsint.com

Vital Force Technology™ makes it possible to provide the healing energies of unique, high quality gems, crystals and minerals (and other products) to millions of people without the destruction of precious samples.

All the chemicals of our world are nothing more than various sophisticated combinations / patterns of 2 vortexes of immensely subtle substance-energy coming from another world, which the ancients called the “Astral” world.



In the same way that the electromagnetic energy field defines interactions between the particles of the Atomic World, “Subtle Energy”, called Chi or Prana in Traditional Eastern Medicine and Philosophy, defines all interactions in the Subatomic World. Chi (Subtle Energy) does not directly affect the electrically charged particles of the Atomic World; otherwise, it would be detected by electromagnetic based equipment. But, Chi deeply influences processes in the Atomic World through its influence on the Anu and, consequently, on the patterns of Anu, which comprise the nuclei of atoms.

Each atom, being a unique three-dimensional mosaic of Anu, has a unique “Chi-field” pattern, connected to the patterns of Anu. When several atoms combine into chemical or crystalline structures, this pattern is even more sophisticated and unique.

Therefore, “Chi-field” patterns (Subtle Energy patterns) through their connection to the Anu that ultimately make up the nuclei of atoms, are the mechanism by which any substance including crystals and minerals can produce effects on the human system.

However, we also need to take into account that the human system is made up not only of chemicals but also has a sophisticated subatomic structure, called “the Etheric Body” by the Ancients, consisting of acupuncture meridians and energy centers called “Chakras” by Ancient Indian Science.

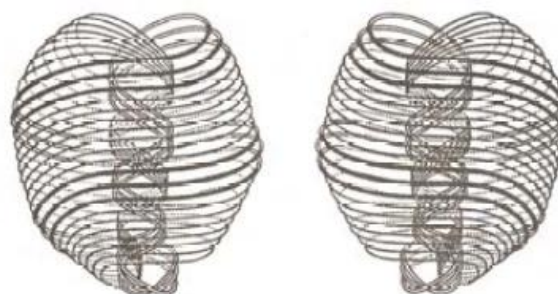
When the human system comes into contact with, for instance, a crystal, the “Chi-field” pattern connected to the Anu mosaic of this crystal might resonate with some part of the subtle human structure and affect its functions. So, the “Chi-field” pattern can influence both the bio-chemical processes in the human body and the functions of the subatomic structure, or “Etheric Body”, which plays the vitally important role of regulator of all physiology of the physical body.

Ancient science had a very straightforward though sophisticated concept regarding the structure of matter / energy in the Universe. They viewed this structure as a series of progressively subtler worlds. Next to the Physical World is the Etheric World (more subtle), which corresponds to what modern science calls the “Subatomic”. The next level up is the Astral World, of which modern science has no knowledge; and beyond that are the Mental and then the Causal (Spiritual) Worlds. Each world has its own type of energy governing the “substance” of that world. The “substance” of each of the “denser” worlds is made from the substance of the preceding more subtle world via some complex process.

The “birth of the Anu” from the substance of the Astral World is an example of such a process. Thus the “matter” of each world is connected with the preceding and following worlds via the process of creation of the denser one from the subtler one. The energies of the different subtle worlds are also connected to each other. But...there is no direct interaction of the energy of each world with the “substance” of the subtler (higher) one or the denser (lower) one.

All of the above brings us to the conclusion that gems and crystals can interact with the human system not only on the Etheric / Subatomic level, but also on higher levels, the Astral, Mental and up. Really, the basic particles, the Anu, and their Chi-Field Patterns, are created from the “substance” and

**Besant and Leadbeater described their observations on the process of the creation of matter as a step by step combination of more and more sophisticated subatomic particles made from two basic particles they called “Anu”**



Positive “Anu” (Right Spin)    Negative “Anu” (Left Spin)

energies of subtler realms. Thus, every unique mosaic of Anu in a crystal has a unique pattern-representation in the subtler worlds. The human system also has “subtle bodies” made from the substance of those subtle worlds.

The organs of these “subtle bodies” can interact with the representation of Anu patterns in the corresponding world. Thus the Astral representation of an Anu Pattern can affect the psychological functions, and the mental representation can affect the mental functions of the human system. Also they can enhance the connection of the subtle bodies with the spiritual realm, helping with spiritual development.

Now, we come to the practical part! How do we make the wonderful energetic properties of these excellent gems, crystals and minerals available to people for enhancing well being on all levels and helping those who are working on spiritual development?

Vital Force Technology™ was invented and developed for this purpose.

#### Principles behind VFT

Dr Yury Kronn found a way to excite vibrations in the Chi-field with plasma-based equipment that utilizes the delicate connection between the electromagnetic field and the Chi-field (Subtle Energy field). He can excite the vibrations with any “elemental properties”; Traditional Chinese Medicine calls these properties: “Metal”, “Water”, “Wood”, “Fire”, and “Earth”. This is very important, because the Chi-field has much more sophisticated properties than the electromagnetic field, which is described by just two parameters: frequency and intensity.

As discussed, Chi-field patterns configure the Anu patterns that influence the internal structure of physical atoms. Using this, he developed a method of “recording” the Chi-Patterns. Once recorded, particular Chi-Patterns can be reproduced any time with the help of a special amplification process.

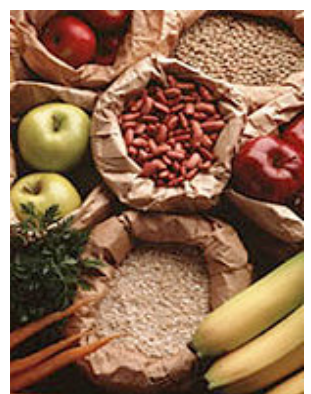
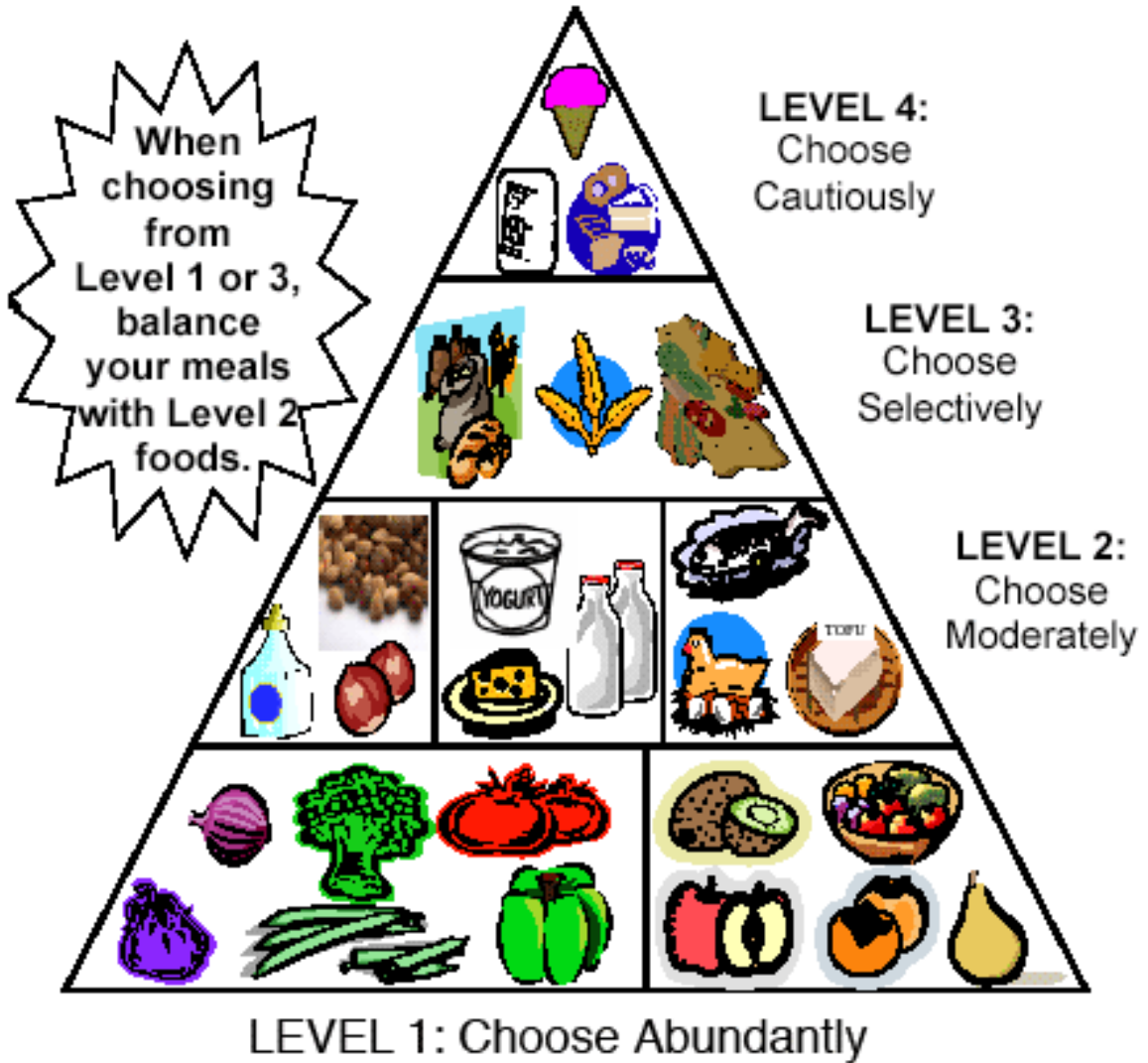
Further, Dr Kronn developed a method of infusing those Chi-Patterns into any material, including crystals and minerals. Liquid trace minerals appear to be particularly good carriers for Chi-Patterns. This has made it possible for us to develop dozens of energy remedies for precisely targeted applications, such as sleep, stress, depression, digestion, heart support, etc.

One important feature of VFT is that it allows one not only to generate Chi-Patterns but also to copy the Chi-Patterns of any substance, including gems and minerals. Thanks to this we can create elixirs by infusing the Chi-Patterns of high quality gems and crystals into concentrated trace minerals and other liquids. This process makes the highly effective healing Chi-Patterns of these unique gems and crystals available to everyone: one need only drink a glass of water with 10-15 drops of energized trace minerals.

**Thus, the vibrational imprint of any substance can be replicated ad-infinitum.**



# FOOD PYRAMID



**Udo Erasmus CHOICE FOOD PYRAMID:  
HEALTHY PEOPLE**

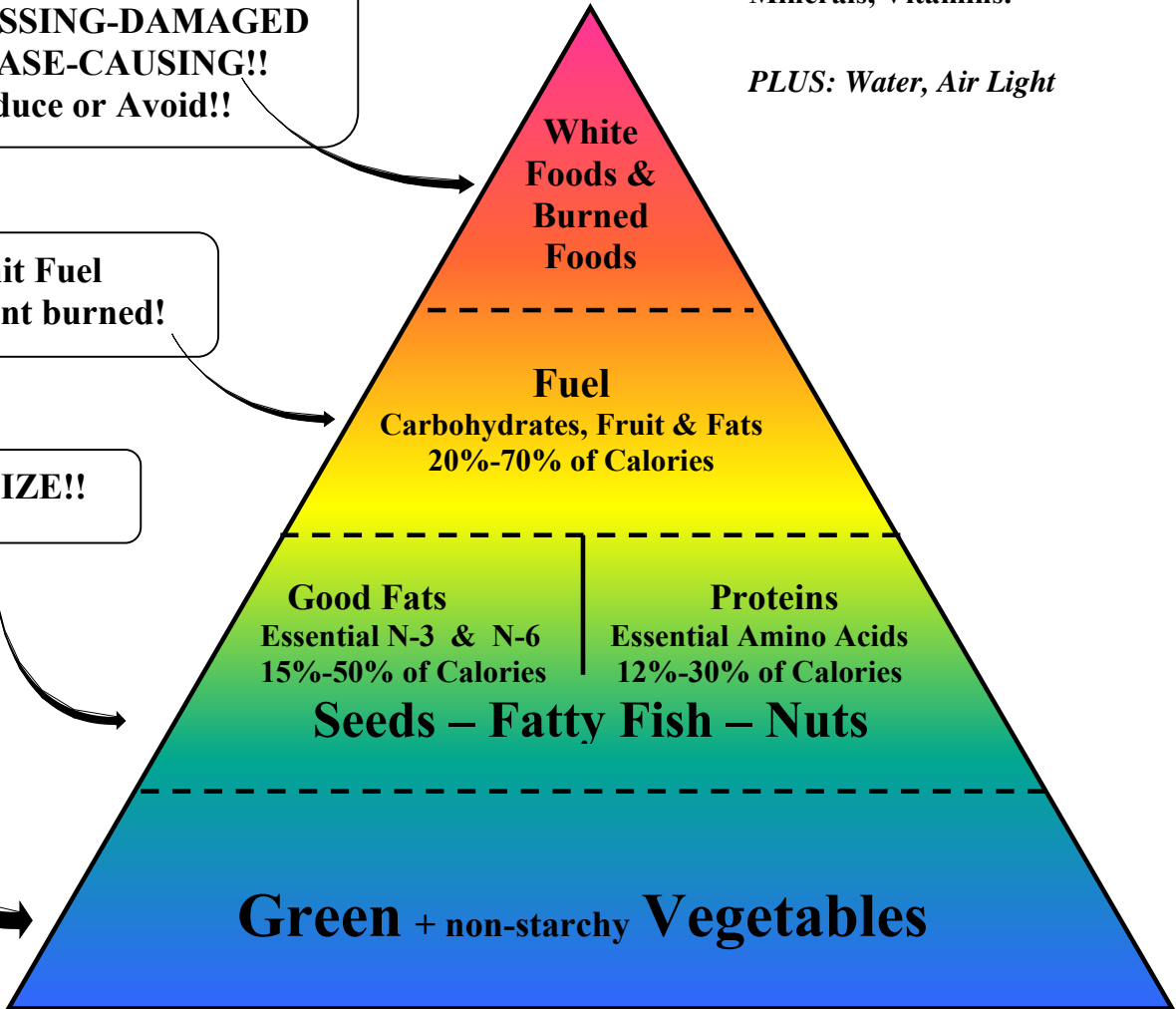
**SUPPLEMENTS:**  
Digestive Enzymes,  
Probiotics, Antioxidants,  
Fibre, Phytonutrients,  
Minerals, Vitamins.

*PLUS: Water, Air Light*

**NUTRIENT – DEFICIENT  
PROCESSING-DAMAGED  
DISEASE-CAUSING!!  
Reduce or Avoid!!**

**Limit Fuel  
to amount burned!**

**EMPHASIZE!!**



**Udo's Choice™ Food Pyramid**

Illustrates health food choices as forming the base or bottom. As you proceed higher on the pyramid, you encounter foods that present more of an obstacle to digestion and metabolism.



## **ULTIMATE in LONG TERM HEALTH CARE MANAGEMENT:**

Raising ones consciousness is moving oneself further away from the environment wherein illness can prevail. To put this into a practical and measurable perspective, consider this:

At the consciousness calibrations of 200 and lower, illness prevails. Some 78% of folks on the planet are at or below this level. This group of the community are generally unhappy, and they represent the majority of life's crisis's, such as unemployment, etc. Their energy levels are at such a low level making them more prone to pandemic illnesses.

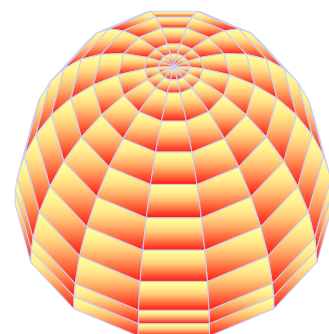
At the consciousness calibrations of 500 and upwards, health prevails. At this level, more than 90% of the community are happy, and represent the abundance that comes from employment and joy. The transition from fear (below 200 dominance) to love (above 500 dominance) is relatively easy, practical, convenient, and simple to achieve, should one desire to, by do focusing upon such a pathway.

In recent years, gifted teachers have published material which clearly enables those who wish to shift into a higher level of health and joy may do so in the convenience of their own homes and at their own pace and leisure. We are happy to say that this is 'not too good to be true', and we are happy to say that we will email to you, should you request, an overview of material that we have identified, supporting our understanding that this is the ultimate in long term health care management.

The **Health Dome** needs to be viewed internally as a hologram.

Each health modality interconnects and is complimented and supported by each and every other health modality. No one process or practice is an exclusive solution.

If you were to say that one practice or solution stands out above and beyond all others at the pinnacle of the **Health Dome** then that would be **Love and Forgiveness**.



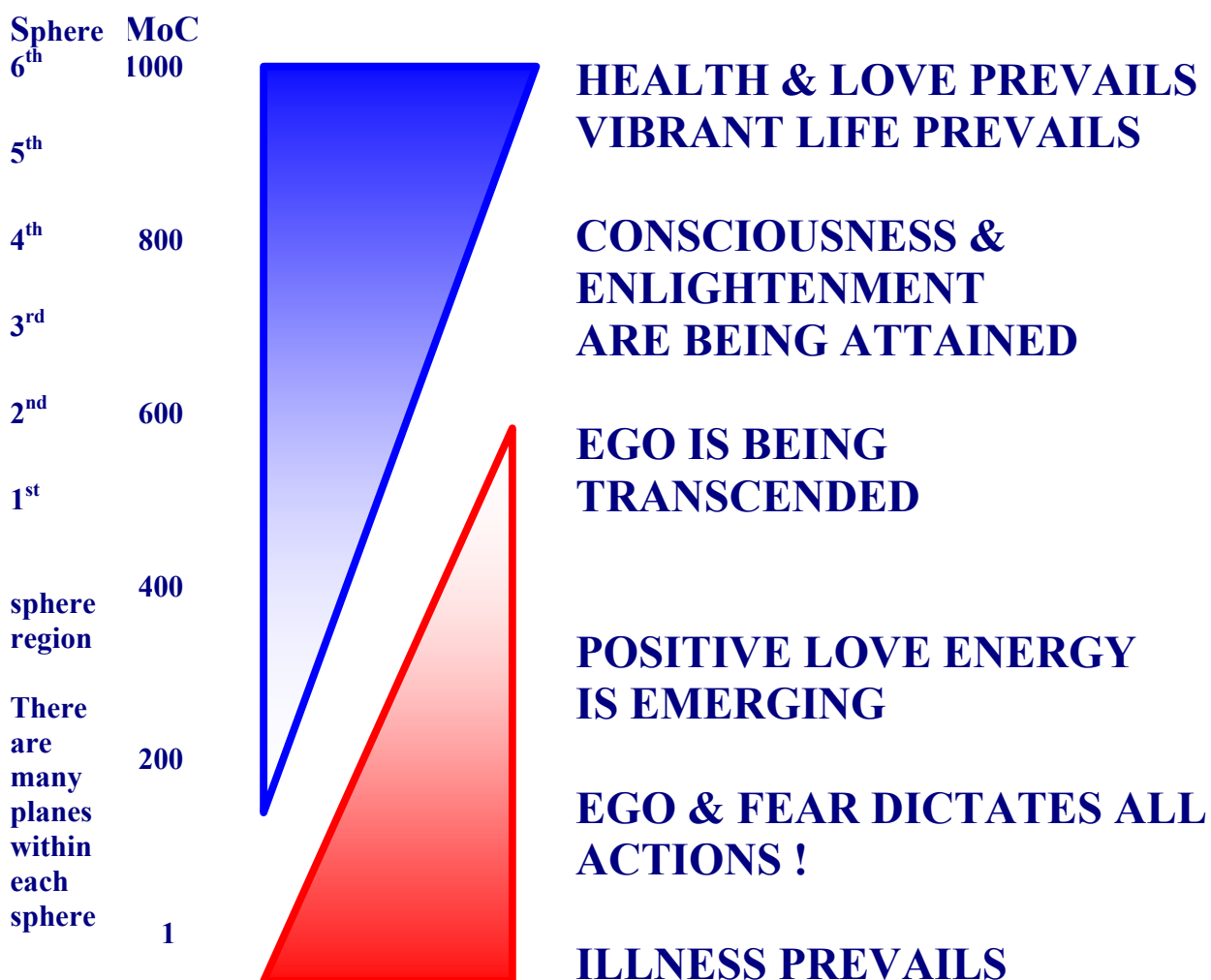
The basic malady found in people is self-hatred. Self-hatred is the basic inner illness in all of us, but just how that self-hatred and non-acceptance of the self manifests is shown in our different character structures. As we work to understand our dynamics on a daily level, we can learn to accept ourselves through this process. Self-love is the greatest healer, and self-love also requires daily practice.

The broad view of the healer encompasses the totality of the human being. In healing there is no separation between body and mind, emotions and spirit – all need to be in balance to create a healthy human being. The healer focuses on physical, psychological and spiritual dysfunction. It is impossible to do healing without affecting the psychological levels of the personality. The more the healer understands the psychodynamics of his/her clients, the more the healer will be equipped to help the clients heal themselves.

**Finding the initiating cause of an illness is always a key part of healing. The objective, from within the Pascas Care Health Dome, is to treat the cause much more so than just treat the symptoms. Re-occurrence of many illnesses is due to the non-treatment of the cause.**

## “All dis-ease is mind generated, and all healing is generated by the love energy of one’s soul.”

The Ego (mind based) manifests illness; the lower one’s level of consciousness (soul condition) then the more prevalent will be illness. Below the levels of 200, the ego and fear of the mind dominate; however, as you raise your level of consciousness by growing in love and achieve a level of 500 or higher, you begin to transcend ego dominance. At the level of 600, all healing is possible.



In the presence of The Creator, all suffering ceases. One has returned to one’s Source, which is not different from one’s own Self. It is as though one had forgotten and now awakened from a dream. All fears are revealed to be groundless; all worries are foolish imaginings. There is no future to fear nor past to regret. There is no errant ego / self to admonish or correct. There is nothing that needs changing or bettering. There is nothing about which to feel ashamed or guilty. There is no ‘other’ from which one can be separated. No loss is possible. Nothing needs to be done, no effort is required, and one is free from the endless tug of desire and want.

**HIV/AIDS:****The AIDS Pandemic**

**RHP™** stands for **Recirculatory Haemoperfusion™**. It is a technique of treating the entire blood stream with specific **Ozone Therapies**.

These unique OZONE systems (above) have been developed over 22 years of intense research. They have been tested in several invivo studies involving thousands of patients.

One of the most important mechanisms of this process is in stimulation of the immune system and the detoxification of bodily functions. The application of these treatments are very easily applied, allowing doctors and nurses to be trained comfortably within 72 hours by fully competent internationally trained personnel.

What you are seeing here is the very dark, almost black, unhealthy blood as it leaves the body of the patient. The other hose with the red blood is what it looks like after it is treated and purified with ozone. You can see the dramatic change in the colour of the blood. It is now clean and is the colour of healthy blood and is ready for reintroduction to the blood stream. This process is completely painless and the patient is free to leave five minutes after receiving the treatment.



Nutrition is a critical part of any treatment program.

<http://www.ozonehospital.com/HIVAIDS.htm>





## EDIBLE VACCINES:

ProCell's new delivery modalities will promote both stability (drug) and the appropriate cellular interactions (vaccines). This includes a novel vaccine adjuvant for boosting the immune responses induced by classical vaccines as well as individual vaccine components.

**All products will be able to be taken by mucosal administration (drinking, eating, inhaling).**

Employing plant production, cost of vaccines produced will be reduced to between 100<sup>th</sup> to 1,000<sup>th</sup> in cost. Vaccines include:

- Nerve Agent Antidote – Butyrylcholinesterase – (BCHe).
- Edible human immunodeficiency virus (HIV) Vaccine (for developing countries).
- HIV p24-based viral load assay.
- HIV and any viral protein components, being plant derivatives, for production of vaccines and for diagnostics.
- Virus-based adjuvant future
- Orally administered treatment for haemophilia future



Utilizing the Company' novel technologies, *ProCell's* diagnostics assays, biologics, and vaccines will exert their benefit by providing significantly enhanced sensitivity, quality, ease of use, clinical efficacy, and safety.

Each of the core technologies listed above can be enabled and applied to specific aspects of HIV, hemophilia and nerve agent protection.

In the short term, edible vaccines will be available for HIV / AIDS, tuberculosis and malaria.

***Have a cookie!***



### **Value Proposition**

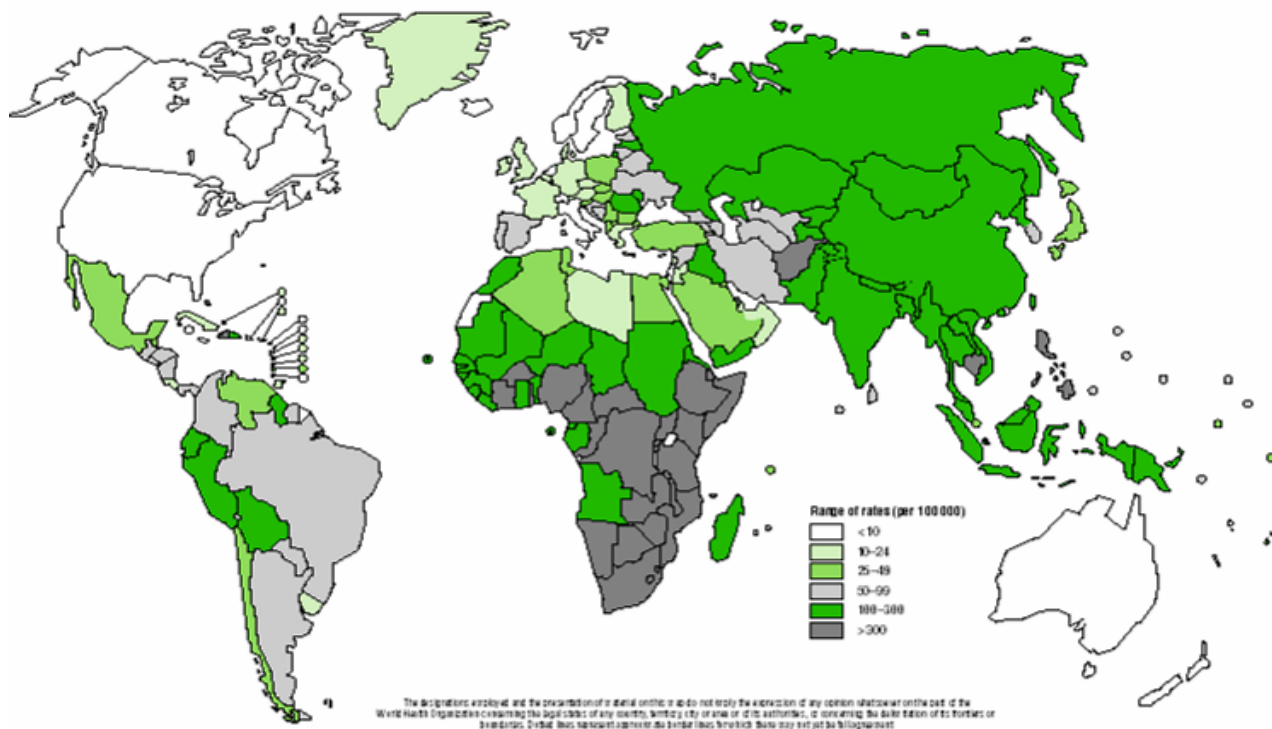
- **Lower Cost** – plant derived proteins can be produced in green houses at up to 1,000 times less than classical mammalian expression systems.
- **Flexibility** – many different edible plants can be used to deliver vaccine depending on the diet of the vaccinees.
- **Simplicity of delivery** – this is a non-invasive and simple means of administering vaccine.
- **Off-the-shelf** – product can be produced in plants which are then dried so the shelf life is very long.
- **Adaptability** – viral proteins for vaccines can be produced in plants at a low cost, purified and delivered by conventional means (i.m.).
- **Safety** – plants are not infected by potential human pathogens. For example, HIV, prions, HBV, West Nile Virus

***Cause No Harm*** < to OTHERS  
to MYSELF

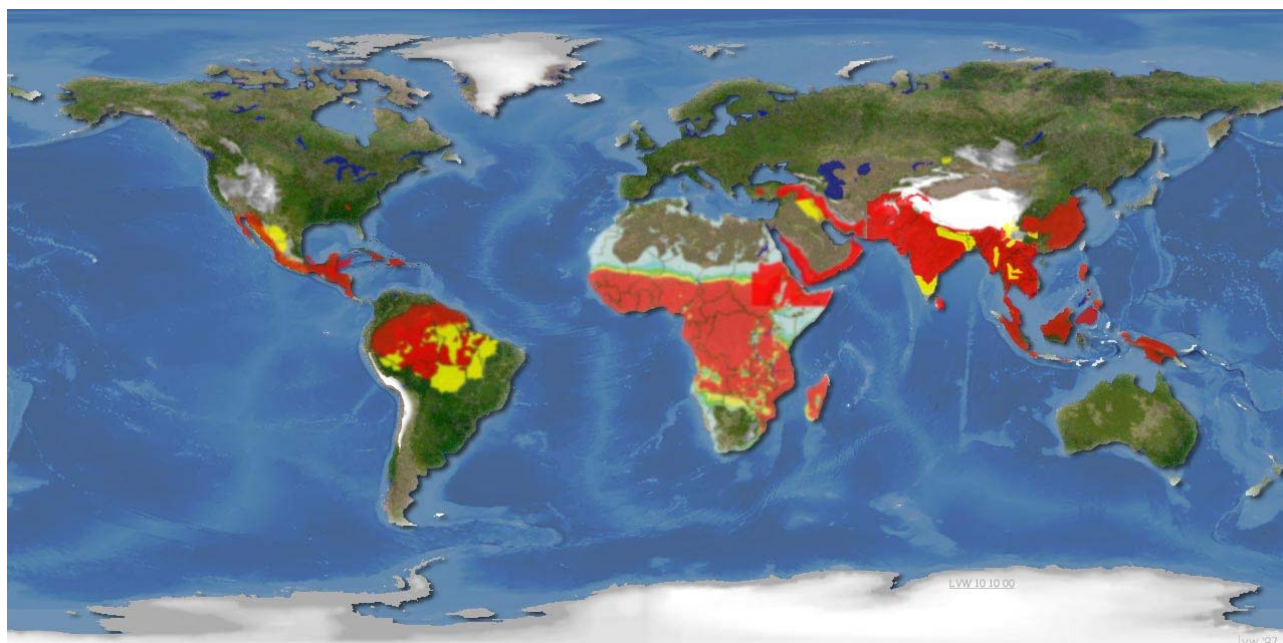
**Strive to love others as I am to love myself**



### Estimated TB incidence rates, 1999



### MALARIA



## **OBESITY:**

### **Obesity in children**

Among the most worrying problems are skyrocketing rates of obesity among children, which make them much more prone to chronic diseases as they grow older and could shave years off their lives, experts warn.

The children in this generation may be the first in history to die before their parents because of health problems related to weight.

Obesity has become an epidemic and an important public health concern. Because the problem is multidimensional, the solution will require an interdisciplinary approach involving the cooperation of the food industry with other stakeholders, such as the government, academia, and health care providers.

The consumer is an important player in the solution to obesity because the consumer can make healthy lifestyle choices at the individual level.



### **FRESH is BEST!**

Processed food has been depleted of nutrition to a point where the body has to work to remove it. Thus, anything white has been over processed and is no longer life enhancing. Consider sugar, flour, white rice, white potatoes (no skin), milk that has been refined and we find that the core elements of our diet are no longer supportive of health.

Adjusting our diets to fresh content is now essential, that is, life enhancing being those items that calibrate over 300 on the Map of Consciousness as per Dr David R Hawkins.



**PASCAS  
PERS**

## DIABETES:

Don Tolman in his Farmacist Desk Reference clearly outlines how fresh content diets can lift diabetics off being insulin dependent within a few short months.

### **Nutrition**

Nutritious food is being steadily eroded from our children's diet.

Processed food generally calibrates under 200 (negative) and is a burden on the body. Such food just 'sits' and it requires the body to work to remove it. This is the foundation of adult obesity and diabetes, etc.

Food that comes in a packet is generally denatured to the level that is below 200. That is, it is no longer life enhancing but is life sustaining. The vast majority of food to be purchased within a supermarket is with a calibration below 200.

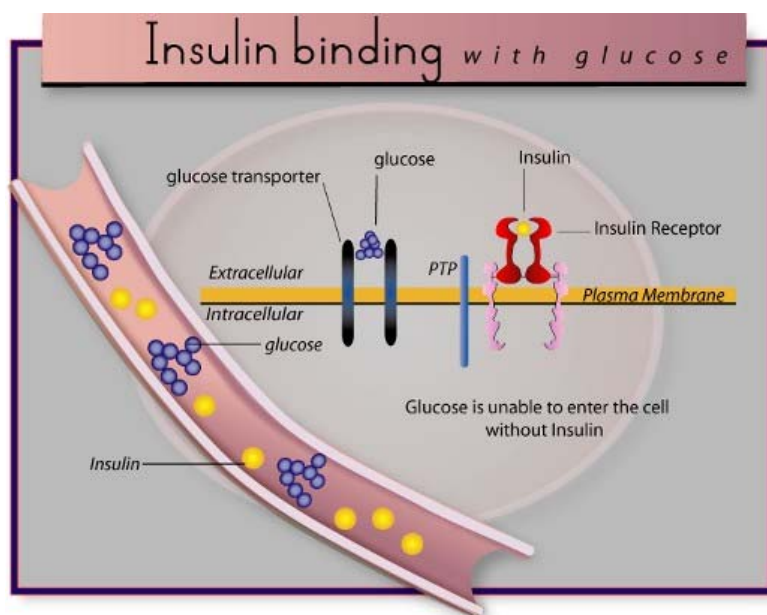
Fresh is best. That is unprocessed food is enormously life enhancing.

Diabetes – a simple cure – no junk, no pop / soda's / sports drinks, just whole food; 80% raw, 20% heated and exercise; be patient and diabetes will resolve in 14 days to 6 months.

So, look at the shopping trolley and one can see why obesity is rampant. Fast food is a contributor, it is not the main issue. The convenience is a disguise to a global pandemic of obesity, asthma, diabetes, etc.

Thus, we at Pascas, are committed to provide an environment which provides for the greatest potential in growth in all aspects of one's life anywhere upon the globe.

Five chemists and three physicians in America carried out a protracted examination of 4,000 diabetics, and concluded that only one percent actually needed insulin. The rest of them recovered on whole foods alone.



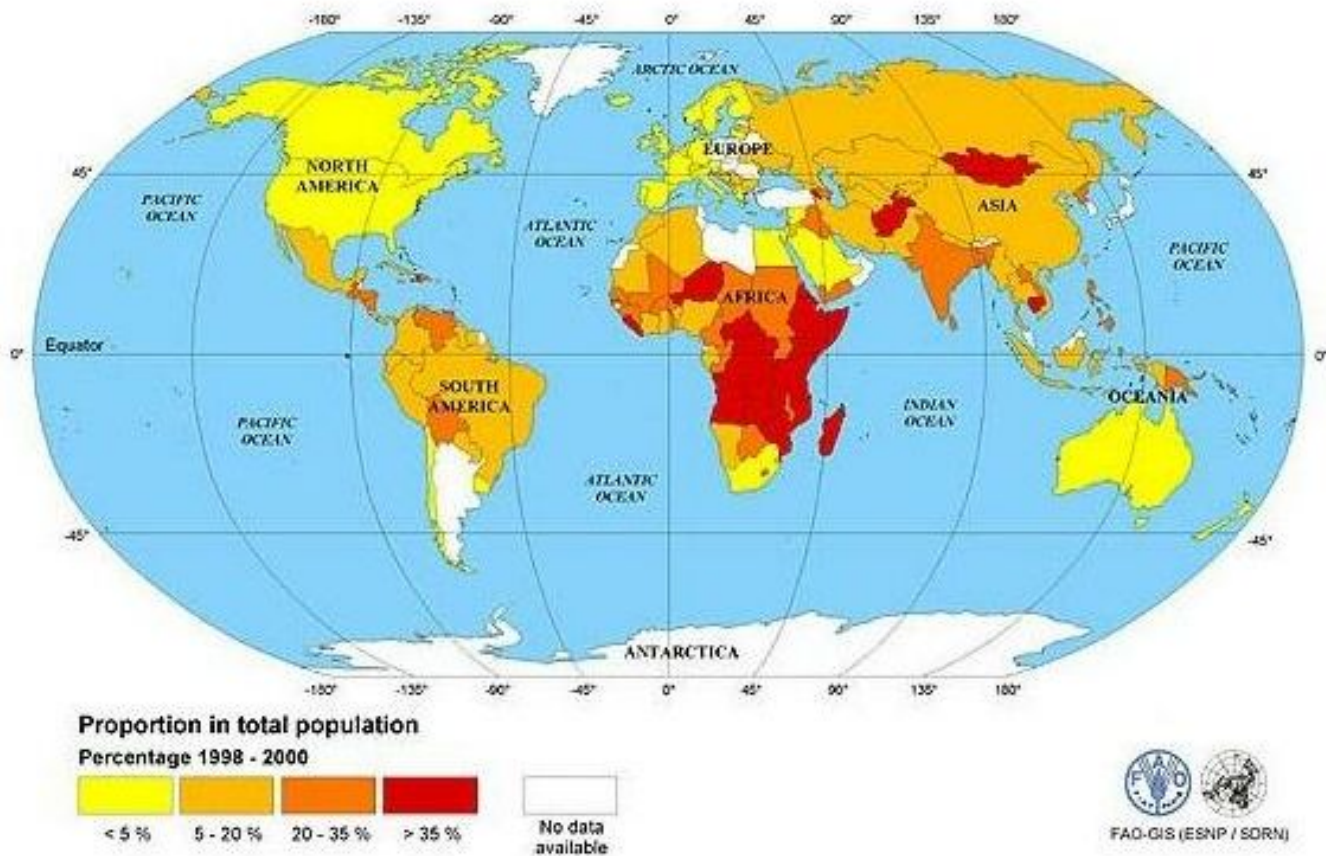
<http://www.pascashealth.com/index.php/library.html>

## **Library Downloads – Pascas Papers**

All papers may be freely shared. The fortnightly mailouts are free to all, to be added into the mailout list, kindly provide your email address. [info@pascashealth.com](mailto:info@pascashealth.com)



# World Starvation % of Population



## **KIDS of the WORLD:**

“Children are the most vulnerable members of society.”

“But when we consider the case of children, their free will is impeded in the initial stages of their physical incarnations. They cannot physically survive on their own and without protection from those who are stronger and wiser, their ability to achieve any type of spiritual progress is nearly impossible. Now some would disagree and say that even a short life can teach valuable lessons, and this does happen. But this is not the ideal pattern and I would hope we can agree that taking care of children on this planet should be the number one priority of those who have taken the oath to help humanity evolve.”



There is no single answer to change poverty. To change the quality of life of the poor means tackling the whole development problem, not just a single issue. Holistic development is required, working horizontally across all problems, not just a single issue vertical input.

**Childhelp USA®** exists to meet the physical, emotional, educational, and spiritual needs of abused and neglected children. They do so by focusing our efforts in the areas of treatment, prevention, and research.

**Junior Journey.** Using The Journey with kids is a practical and effortless way to help children clear personal issues, liberate the innate genius within, allow natural abilities to shine and their spirits to soar. The results of childrens’ experience are as profound and deep as with adults attending The Journey Intensive programs.



**Nova Siliqua – Orion Healing.** Nova Siliqua nurtures the “seed within”, to promote educated, informed and prayerful healing.

The body has an innate healing system of wisdom that allows us to heal anything the body has created.

Nova Siliqua nurtures this belief with the use of Vianna Stibal’s Orion / Theta Healing Processes.





## **TERRORISM & WAR SURVIVORS / REFUGEES:**

The most valuable way to help a refugee family in your community is to be a friend. Your welcome and friendship can go a long way helping them feel at home.

Invite some refugees to your class or to a community meeting to share their experiences. Listen to what they went through before arriving. Find out what their lives were like before they became refugees and what they dream of today.

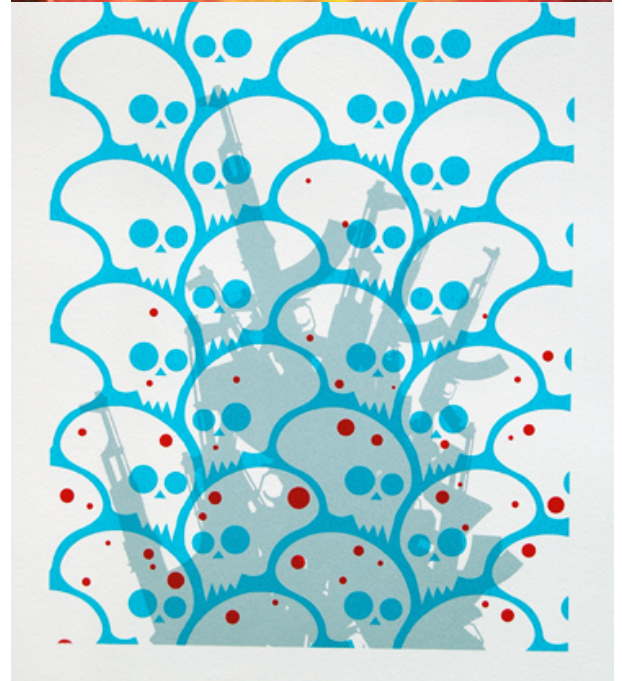
There is an intrinsic connection between refugees and racism. Racism is a direct cause of refugee movements. Every year hundreds of thousands of people are forced to flee their homes because of racial discrimination and ethnic violence, such as the Roma in the Czech Republic, Kurds in Turkey, ethnic minority groups in Burma, Tamils in Sri Lanka, and Hutu in Burundi.

It is therefore essential that the spotlight be put on discrimination against refugees, asylum seekers and migrants. This is the new racism of Europe and elsewhere.

Throughout Western Europe, asylum seekers, refugees and migrants have increasingly been the targets of racist attacks and harassment. A spate of anti-immigrant racist violence gripped Germany recently when a bomb explosion in Düsseldorf seriously injured nine immigrants. Asylum and immigration have become hot political issues in Europe.

Debate over asylum in Britain took place in a highly charged xenophobic climate, with government and opposition politicians alike, accused of fuelling public hostility toward refugees and asylum seekers. A British civil liberties group reported to the UN Human Rights Committee that the negative portrayal of asylum seekers during the general election campaign directly contributed to the rise in racist attacks against asylum seekers, and contributed to heightened racial tensions in general. Those who flee racism and ethnic violence frequently face a hostile reception in their countries of refuge. Opposition to refugees is growing in traditionally generous refugee hosting countries such as Guinea, Pakistan and Iran, which are starting to close their doors to refugees, claiming that they are overburdened with their own problems and fatigued after years of sheltering millions of refugees with little international assistance.

Racism also presents an obstacle to solving refugee crises. Refugees who were forced to leave their own countries because of their racial or ethnic origin often find themselves unable to return home. More needs to be done to address the ethnic violence and discrimination that cause people to flee their homes in the





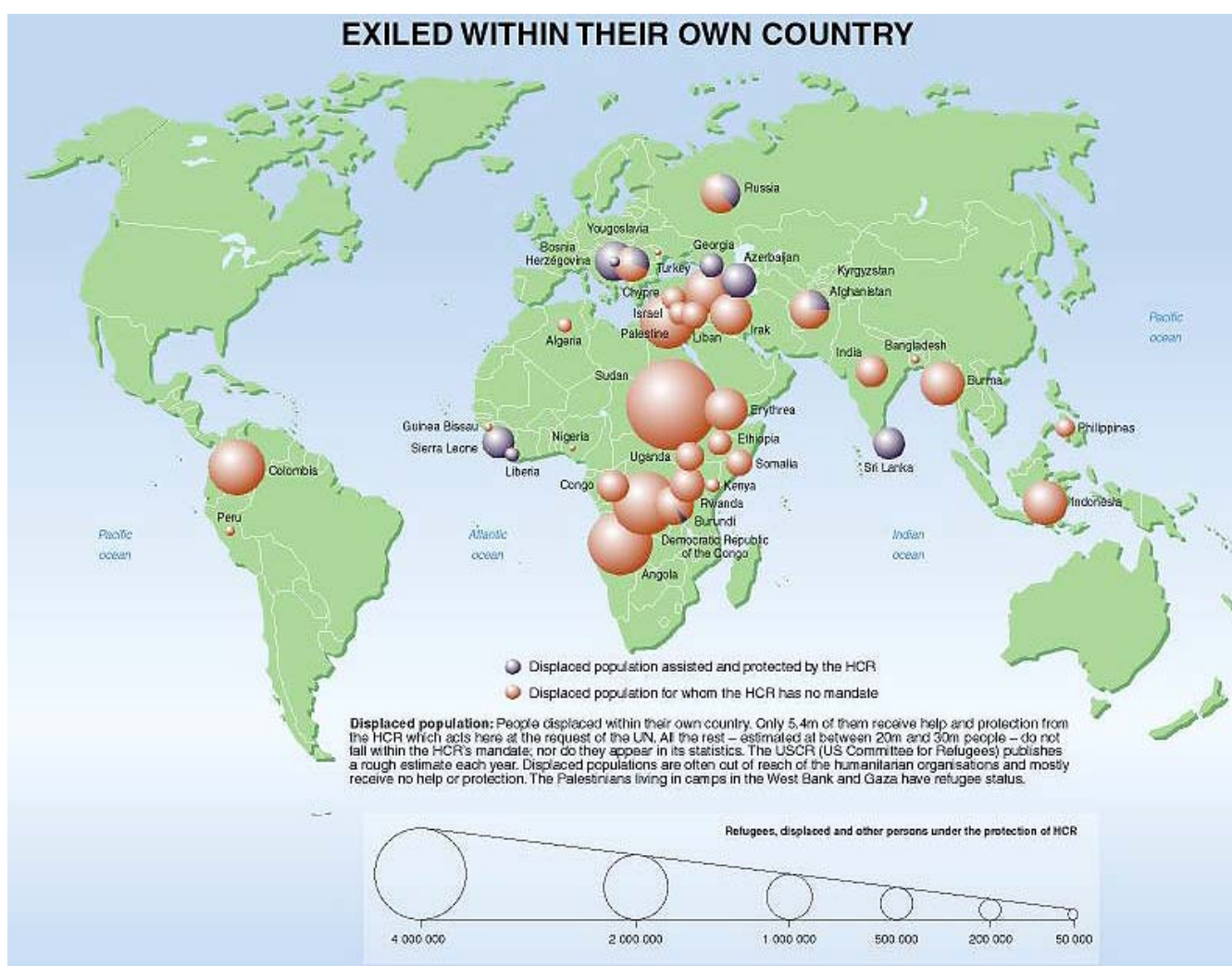
first place, and greater assistance should be given to those countries in Africa, Asia and the Middle East which host the majority of the world's refugees.

Politicians and the media have a responsibility to avoid inflammatory and negative portrayals of refugees and migrants that fuel public opposition and contribute to the rise in racist violence. Governments should protect the rights of refugees, asylum seekers and migrants and take steps to reverse policies and practices that discriminate against them.

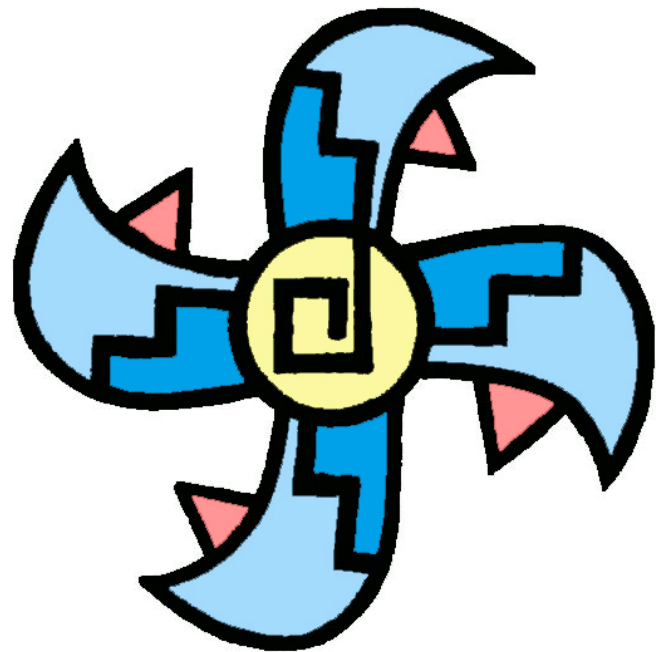
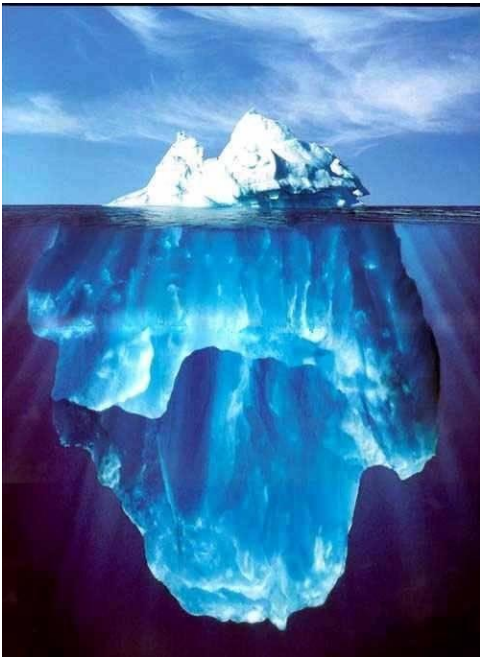
More must be done to educate the general public about the positive contributions that migrants, asylum seekers and refugees can make to their new societies.

“People of the world will never live in peace until people of the world have inner peace.”

P.184 Your Immortal Reality – Gary R Renard.



# Chaldi Knowledge Centre



**Beacons  
of Light  
around  
the globe**



**CHALDI COLLEGE: (pronounced Kaldi) Attached to each Pascas Health Clinic.**

The Akkadians which include the Sumerians, continued the Naacal teachings and built colleges for the teaching of the wisdom of the Motherland which included the Cosmic Sciences and religion. These colleges they called Kaldi or Chaldi (the C was pronounced K in Naga). Kaldi or Chaldi is a Naga word meaning enclosed or surrounded. This was in reference to the fence or wall which always surrounded these colleges. These colleges were open and free to all who deserved to learn the wisdom of the Motherland. The slave was as welcome as the king. The various peoples who successively occupied the land, all took advantage of the Chaldi Colleges to extend their learning. The Israelites when in captivity in Babylonia or Chaldea patronized them to a very great extent.

**Our overall mission is to raise the God / Universal consciousness of humanity by:**

1. **Raising our own energy / consciousness.**
2. **Raising others energy / consciousness.**
3. **Provide education and learning.**
4. **Provide health and wellness.**
5. **Supporting the provision of clean air, clean water, nutritious food, and a safe haven**

**Vision** – to raise the collective energy / consciousness of humanity through education.

**Mission statement** – raise consciousness through consciousness.

**Programs:**

Chaldi will provide programs for all areas of education required throughout the group.

These programs will fall into the following categories:-

1. Adult education
2. Tertiary education
3. Secondary education
4. Primary education
5. Pre school education

In particular Chaldi will provide by either creating or sourcing, all the training required for all the project members' staff training programs, and train the trainers as required to deliver Chaldi programs in all areas.





**WE are meant to grow up LIVING FULLY CONNECTED to our FEELINGS:**

Humanity has always had an awareness and involvement with spirits, with life on the other side, because we are all heading that way, we all end up dying and becoming one of the spirits, and were humanity living rebellion-free, then nearly everyone would enjoy some level of spirit involvement either directly or indirectly, loving such an expansive awareness in life.

**We are meant to grow up living fully connected with our feelings in our physical reality, and at the same time with full feeling awareness of spirits and life after death, because after all, God is the greatest Spirit of us all.**

And so having an awareness and involvement with spirits can, and should, help us have more of an awareness with our Mother and Father. And it's not with just spirits, it's also with the angels who are with us all the time, and the nature spirits should we be open to them, and even higher spirits if we are to work with them, such as the Melchizedeks or Trinity Teacher Pairs. But mostly for those people involved with the Divine Love, it will be with the Celestials spirit group that is assigned to help them.



It is very important to understand that spirits and spirit life is meant to be part of life on Earth. However that's not to say everyone need to have an ongoing relationship with their spirit friends, but they can at least still be aware of spirits and spirit life and where we will be going and something about what to expect once we die. And when you are open to it, lessening the grip of one's fears about it, then we will find it will be just another aspect or level of life, and one that can give us quite a lot of comfort.

**TRUTH LOVING SOUL V ERROR INFLICTED MIND**



**Feeling  
Healing with  
Divine Love is  
the key!**



To liberate one's real self, one's will, being one's soul, is by embracing Feeling Healing so to clear emotional injuries and errors. With the Divine Love, then one is also Soul Healing. We are to feel our feelings, identify what they are, accept and fully acknowledge that we're feeling them, express them fully, all whilst longing for the truth they are to show us.

**MAN is not meant to INTERFERE with the DRIVERS of PAIN:**

21 September 2011

Verna, a Nature Spirit: Mary spoke of the disease resistant microbes coming about because of all the antibiotic food animals are forced to eat in some of the developed countries, well that's our department, one of them anyway. We are the ones responsible for such disease resistant bacteria. You see bacteria are open to easy manipulation from us, and so we're slowly bringing about the disease resistant strains along with the viruses and funguses that will be required by humanity in the times to come.



Humanity is NOT meant to heal itself of all disease by killing off the microbe, by doing things to stop it harming you. Humanity is to grow in truth beyond the need to have such microbes affect it, thereby not having to do anything at all to 'protect' itself from the so-called 'bugs'. The common cold only causes you such bother because you're already causing yourselves so much bother by refusing to feel the bad feelings you're denying. The bother's are the same, the cold coming to you so you can feel how you're really feeling – bothered, that being how your parents made you feel.

Humanity is to see that it's futile to keep trying to solve the problem by killing it, that it won't go away that way. It might be able to delude itself that it's done the job, but it's only short term and the bug will return, even stronger than it was. Had you left it as it was, and concentrated on growing in truth through the doing of your feeling-healing, then you'd have nothing to worry about from the bug. The bugs only cause you the suffering you require because it's what you need to help you feel bad as you refuse to allow yourself to feel as you do – bad. But instead of allowing it to make you feel bad, all so you can express such bad feelings uncovering the truth of them, you try to kill it and make it go away only exacerbating your self- and feeling-denial, only making things even worse for you in the long run.

When you have a disease, all the pain you feel from it IS ALREADY pain that's already within you, it's nothing new. You're not suddenly being attacked by this thing that's causing you all this pain. You're being helped by this thing to become aware of the pain you're already feeling, but are refusing to accept and acknowledge. And because you are denying yourself this pain, it all being felt in your early life and being kept buried within you, so it seems like suddenly your full of pain all because of your disease. And it's true that on a physical level the disease is causing you pain, but on the emotional, mental, spiritual and psychological levels, it's only helping you become aware of what you're not allowing yourself to feel. So do you see, YOU ARE ALREADY THE PAIN, it's all already there in you, you're already feeling it, only you've told yourself you're not. So the bug comes along into your body, your soul allows it to 'infect' you instead of rejecting it, and it makes you feel bad, all the bad feelings that are lying dormant within you. Only they are not dormant, you've just blocked them out, that being how extraordinary the mind is.



Were humanity true to its feelings and not under the influence of the Rebellion, it would have evolved beyond the current diseases that afflict it. It would have encountered other higher diseases, but would be well on the way to not having to require their help either. There are higher diseases awaiting humanity in the future, as it moves beyond the current ones, but by then such disease will be known for what it is, to help stimulate certain feelings which when expressed and the truth found, bring about the healing of the illness. As for the current diseases, we'll keep making them resistant to your medicines forever, it's all very easy for us.

Extracts from: With Verna – the Nature Spirit by James Moncrief

## Feelings First Spirituality The New Way

**Feelings First**  
**FF**  
**Feeling Free**

The New Way, Feelings First Spirituality  
Learn to live with God through your Feelings

Accept, express and long for the truth of your feelings

Be free in your feelings  
Free your feelings from your mind's control  
Live true to your feelings; your feelings are your true self  
Live true to yourself through your feelings



Live true to yourself by living true to your feelings.  
Long for the truth of your feelings.

Accept / Express / Bring out ALL of your good, and most importantly,  
BAD feelings.  
Want to understand why you're feeling them.  
Use your surface feelings to take you deeper into your repressed and  
hidden feelings.





The Feeling Way is the True Way.  
Your feelings are your spiritual guide.  
Your feelings will take you to God.



Your feelings will show you the truth of your relationships, including your relationship with God; and if anything is wrong, untrue and unloving, then why it is.

Our feelings are sacrosanct and we should respect them accordingly. And we should NEVER block them out, ignore, override, banish, deny or reject them, because if we do, we're only doing that to ourselves, as Our Feelings Are Our Self.

Our feelings are the gateway to our soul. Our feelings are the closest we can get to our soul. Knowing the truth of our feelings is knowing the truth of our soul, and knowing the truth of God.

Feelings First Spirituality is the True path for humanity.  
It embraces all people.  
It completely unifies the world.  
Everyone can relate to everyone else through their feelings.  
And we can all live the truth that comes from our feelings, all sharing the same truths as we express and have the same feelings.  
No one need be left out; no one is more special than anyone else – we are all united in Truth through our feelings.  
So with and through our truth we live our lives, therefore without the need of any man-made mind-laws, rules and restrictions that limit self-expression as inspired by our feelings.



The New Way, Feelings First Spirituality is what is to replace all man-made, mind-contrived religions that so many people have enslaved themselves to. The New Way, Feelings First Spirituality will set us free of all that control, ending the Rebellion and Default within ourselves as we do our Feeling-Healing, and ending such control and spiritual stagnation in the world.

Bring on the End Times – get it over and done with! Let's all see that Jesus is not going to come again, that Prophecy has failed all the mind-controlled platforms. Allow such false systems of belief to die their long-awaited natural death, they've overstayed their welcome, it's now time they fade away. So let us show such antiquated, erroneous systems of belief the exit and bring on the fresh liberation of discovering the truth of how we are to live for ourselves, each of us personally in our lives, and all by looking to our own feelings for it. Self-revelation through our feelings is the way to go.

The Way of the Mind is ending, and is really the End Times – the End of our mind control, and **it's about time!** With the Way of our Feelings replacing it.

The End Times means the end and therefore a New Beginning. And that new beginning is a whole new Spiritual Age – an age based on self-revelation of truth through one's feelings, coupled with and supported by higher revelations from the Celestial spirits, angels and nature spirits.



The Feelings First Spirituality is the True Way to God because it helps you get to know God, helping you to reach out, connect and be personal with God, and do God's Will, all through your feelings. It is the only true way of getting to know the God of Feelings – our beloved Heavenly Mother and Father, the Great Soul of Divine Love.

Love comes through our feelings and not our mind, as we've all been wrongly led to believe.

**Feelings First; then comes The Truth; then comes Love.**

**LOVE is the Religion of Feelings, being:**

**Feelings First Spirituality, The New Way**



my  
**House** is your  
**Paradise**  

**HOME**

**CLOSING SUMMARY:**

Not only do we have an enormous variation of consciousness levels within children and adult groups within every community around the globe, we also have an enormous variety of social, economic, health and environmental issues to consider within each of these communities.

Only by bringing together all the available skills, understandings, research, technologies and best endeavours that we, as a collective group, can and will achieve the making of a very incredible and important contribution to the long term welfare of our global communities.

We must act as one. We must also look at each community that we are to enter as being unique requiring solutions specific to that location.

We are, within history, witnessing an evolutionary jump in humanity – and this is our call to action.

We are also witnessing an enormous shift in technological capabilities, some of which is the emergence of metaphysical capabilities as a direct result of humanities and sciences' positive shift in consciousness.

Only will we constructively and effectively go forward with these programs if we work together as one.

We look forward to understanding programs and undertakings that you consider priority and seek to understand how we can support your planned undertakings so that we can all work with the highest level of efficiency and skills. We are suggesting that Pascas Global will make available all its possible skills and resources to those folks who wish to pursue programs under the global banner.

We welcome input from anyone to grow our capabilities in these endeavours to alleviate pandemics in their many and varied forms and potentialities.



GEMS for ALL PEOPLE of all AGES to EMBRACE:

The GOLDEN AGE!

***Cause No Harm*** < to OTHERS  
to MYSELF

**Strive to love others as I am to love myself**

At any time, any where, and in any way you so please:

Approach our Heavenly Parents, in reverence, without fear or trepidation, just as we, as a child, approach our earthly parents knowing that open loving arms are extended to receive us at all times. As one's love grows for our Mother and Father in the Heavens, we come to know with absolute clarity and certainty that our Heavenly Parents, loves you and me and everyone in return, at all times, and that fear is an illusion created by man's mind.

God, who is our Heavenly Mother and Father, is almighty, all powerful, infinite, and all loving. The love of the Heavenly Parents for Their children, man, has been and is always infinite and ever present. As one's faith evolves, one's love for our Heavenly Parents will have no limit. As we grow in Their love, so will we grow in love for all of God's creations and our fellow man.

The Source Soul, our Heavenly Parents, simply desires for us to ask for Their Love.

God's Divine Love: Pray for it, ask for it, and receive it.

"I love you Father." "Let the Divine Love flow its energy into my soul."

"Mother, Father, I desire your Love and I am loving you."

"Soul God, I love you and I love receiving and experiencing your Divine Love."

"True Soul God, I am here, I am aware of your Love.

Please hear my aspiration for your Love and as I approach you from my soul, I can feel your Love in the way that you are loving my soul."

"Please Mother and Father, may I receive Your LOVE."



Maybe we could simply long for and ask:

*Please, Mother and Father, I want some more of your Love!*



MoC 1,471

# **PASCAS CARE**

## **"Beacons of Light"**

### **around the globe**

