

PASCAS CARE

"Our Being"



"Our Being"

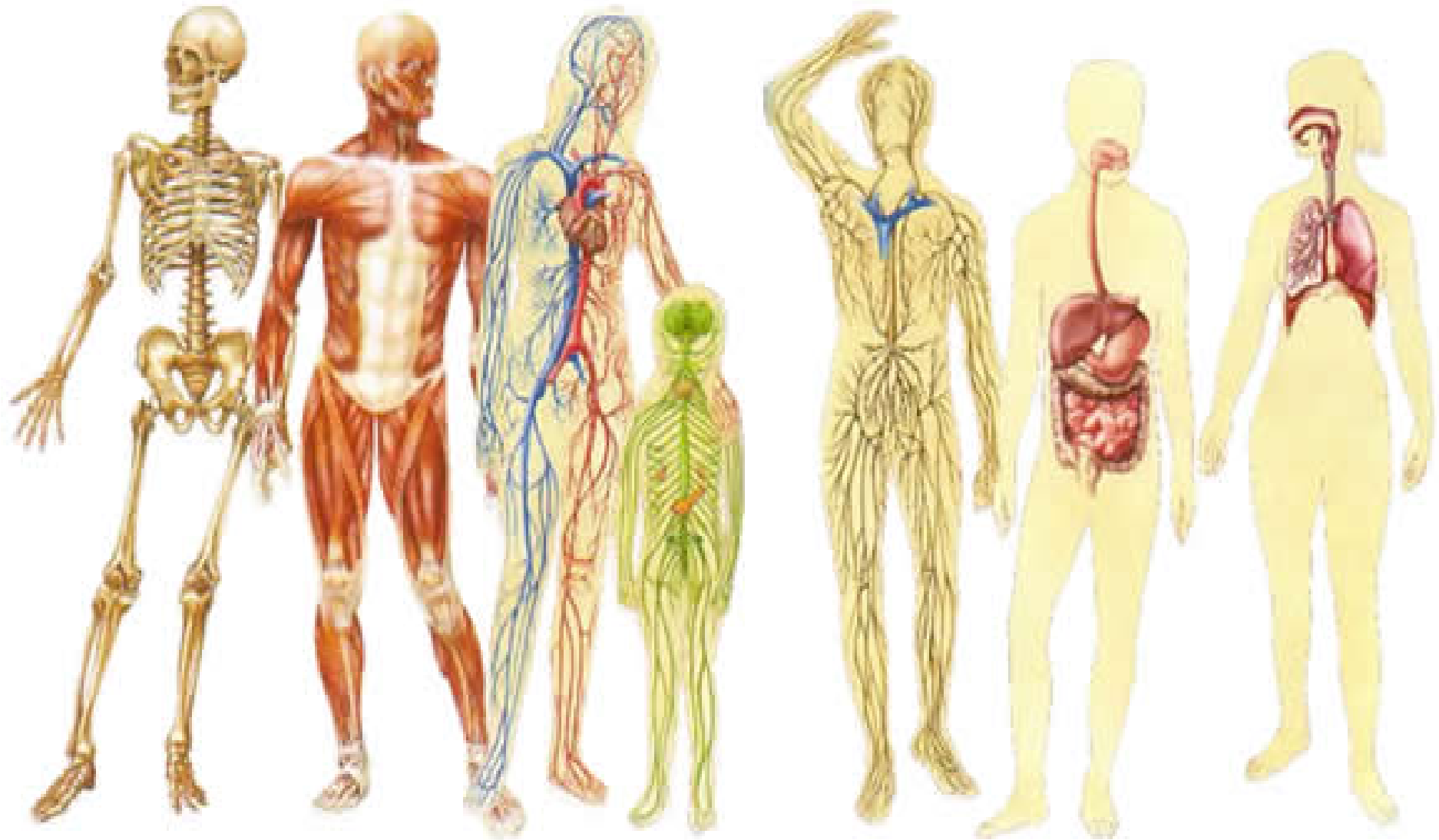


The Ten Human Body Systems:

1. Skeletal System
2. Muscular System
3. Circulatory System
4. Nervous System
5. Digestive System
6. Immune System
7. Urinary System
8. Reproductive System
9. Respiratory System
10. Lymphatic System

**"Our
Physical
Being"**

"Our Being"



"Our Healing"

The gift of healing rests within everyone. It is not a gift given only to a few. It is your birthright as much as it is ours. Everyone can receive healing, and everyone can learn to heal. Everyone can give healing to themselves and to others.

Healers simply learn to perceive and regulate their energy in order to utilise it for healing.

"Our Healing"

It takes good functioning of all your bodies to bring your creative ideas into manifestation on the physical plane. This includes your health. If you want to have good physical health and a full life, it is necessary to clear, charge, and balance all your bodies and therefore all the areas of human experience.

"Our Healing"

In addition to our five senses of sight, sound, taste, smell and touch, we have intuition, direct knowing, and the sense of emotions, and the sense of love.

You can learn to turn down the internal noise in your head and pay attention to the softer rhythms and subtler nuances of life.

Much of illness is a result of blocking the natural flow of an individual's creative energies.

"Our Healing"

Each smaller segment of the frozen psychic time conglomerate is composed of the energy-consciousness that was frozen during a particular past experience.

Through healing work, one of the small frozen psychic time blocks is released. The increased energy released into the auric field then, in turn, automatically starts releasing the other, small segments of the time conglomerate because they are of like energy.

"Our Healing"

Once these pieces of the human psyche that have not matured with the rest of the personality are released, they begin a rapid maturation process. This process can take from a few minutes up to a couple of years, depending on how deep, strong, and pervasive the frozen energy-consciousness was.

"Our Healing"

MOVING TOWARD the HOLOGRAPHIC MODEL

We need friendly working relationships between patient, healer and physicians so to utilise the best in self-healing, healers and the great service of healing that Western medicine offers.

We each, personally and in groups, have access to all the healing knowledge and power there is, ever was, and will be in the universe.

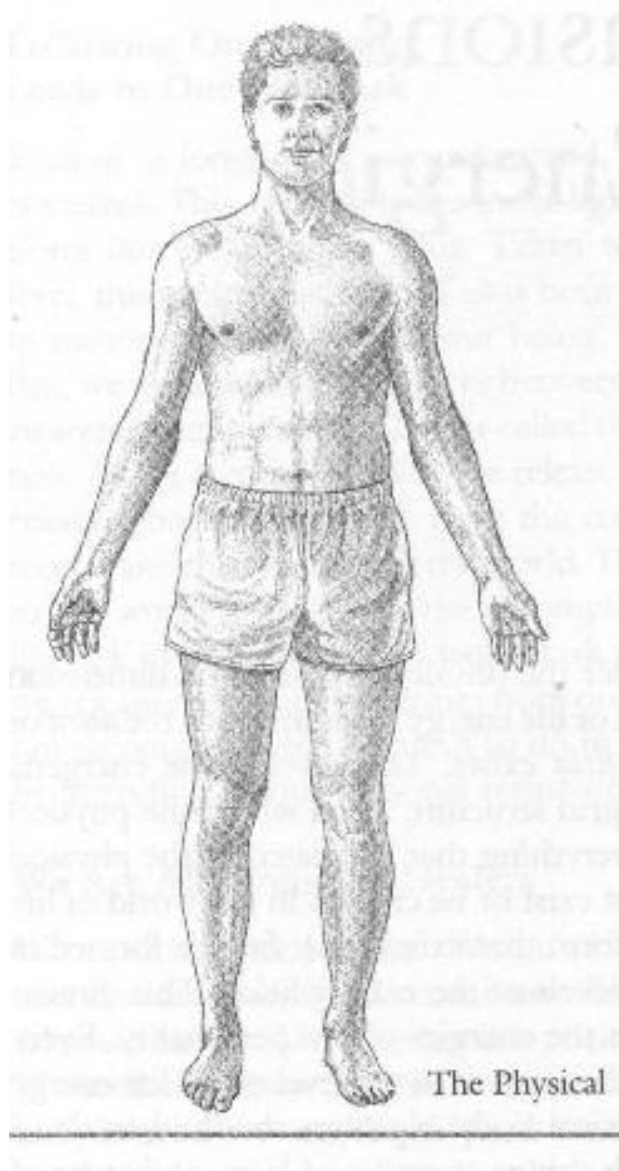
"Our Being"

The physical arises from energy.

Since the physical body arises out of the energy field, an imbalance or distortion in this field will eventually cause a disease in the physical body that it governs. Therefore, healing distortions in the field will bring about healing in the physical body.

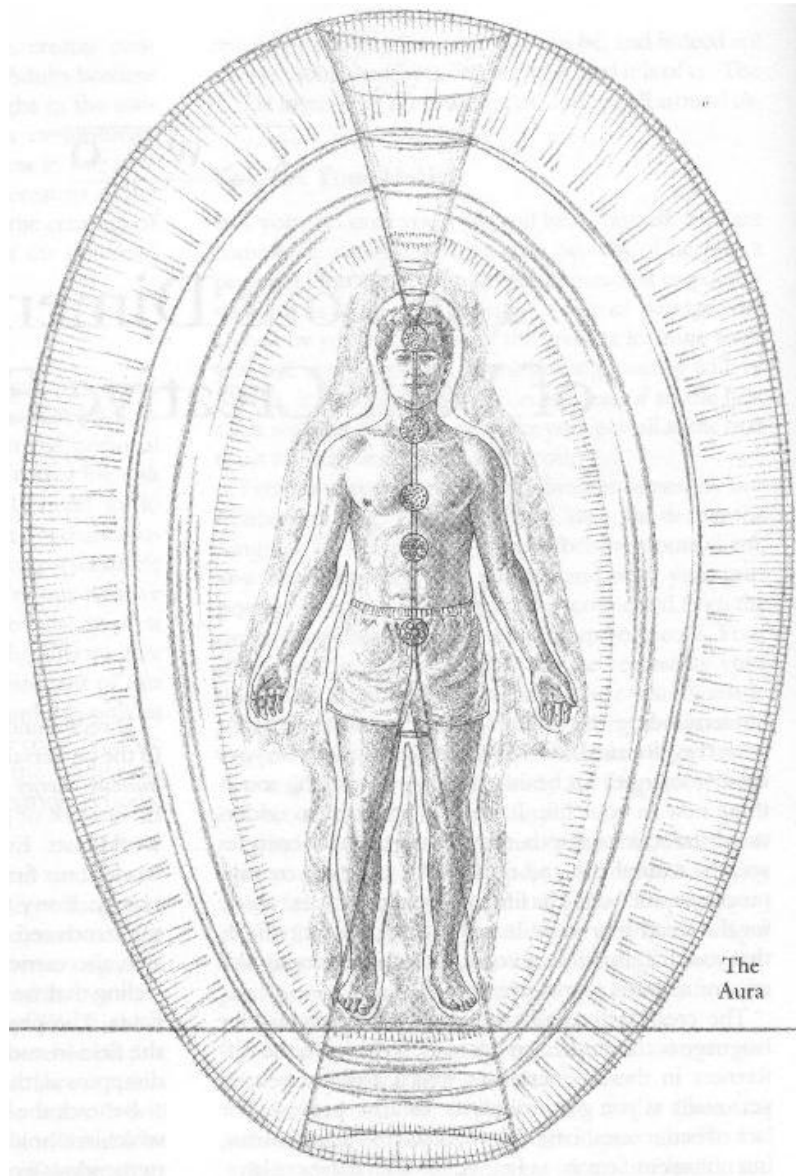
Healing is a matter of learning how to heal the field by restructuring, balancing, and charging it.

The Four Dimensions of Your Creative Energies



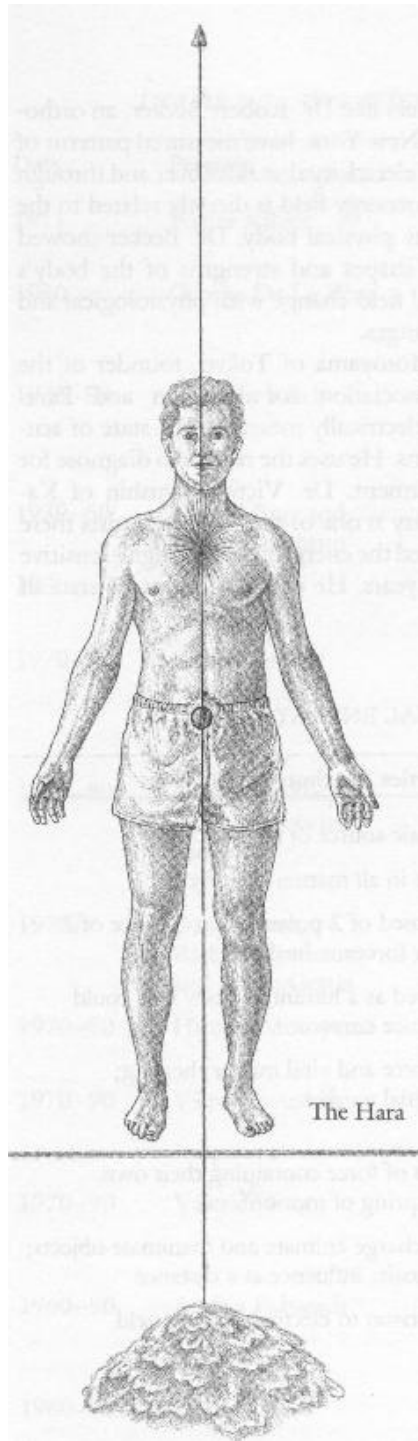
The Physical

The Four Dimensions of Your Creative Energies



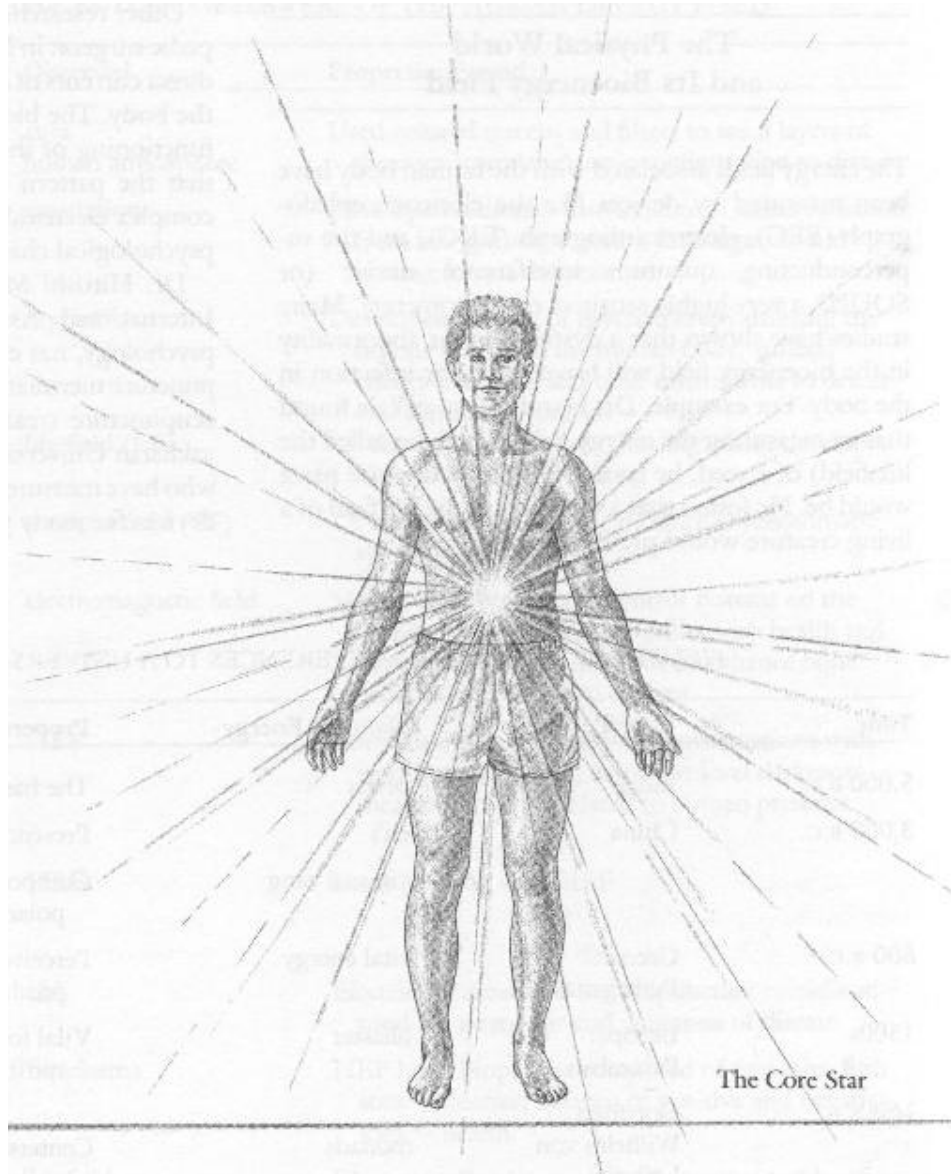
The Aura

The Four Dimensions of Your Creative Energies



The Hara

The Four Dimensions of Your Creative Energies



The Core Star



"Our Being"

First of the SEVEN LAYERS of the AURA

Ketheric Template Body – Causal Body – Divine Knowing –

↑ **Spiritual Body**

Celestial Body – Divine Loving

↑

Etheric Template Body – Divine Will

↑

Astral Body – Loving – Relations with Others

↑

Mental Body (very active mind, consciousness and domain of the ego) – Rational Mind

↑

Emotional Body – Real Feeling

↑

Etheric Body (incorporates Chakras) – I Exist – Spirit Body

↑

Physical Body (including the brain) - Beingness

"Our Being"

Divine mind, serenity

Divine love, spiritual ecstasy

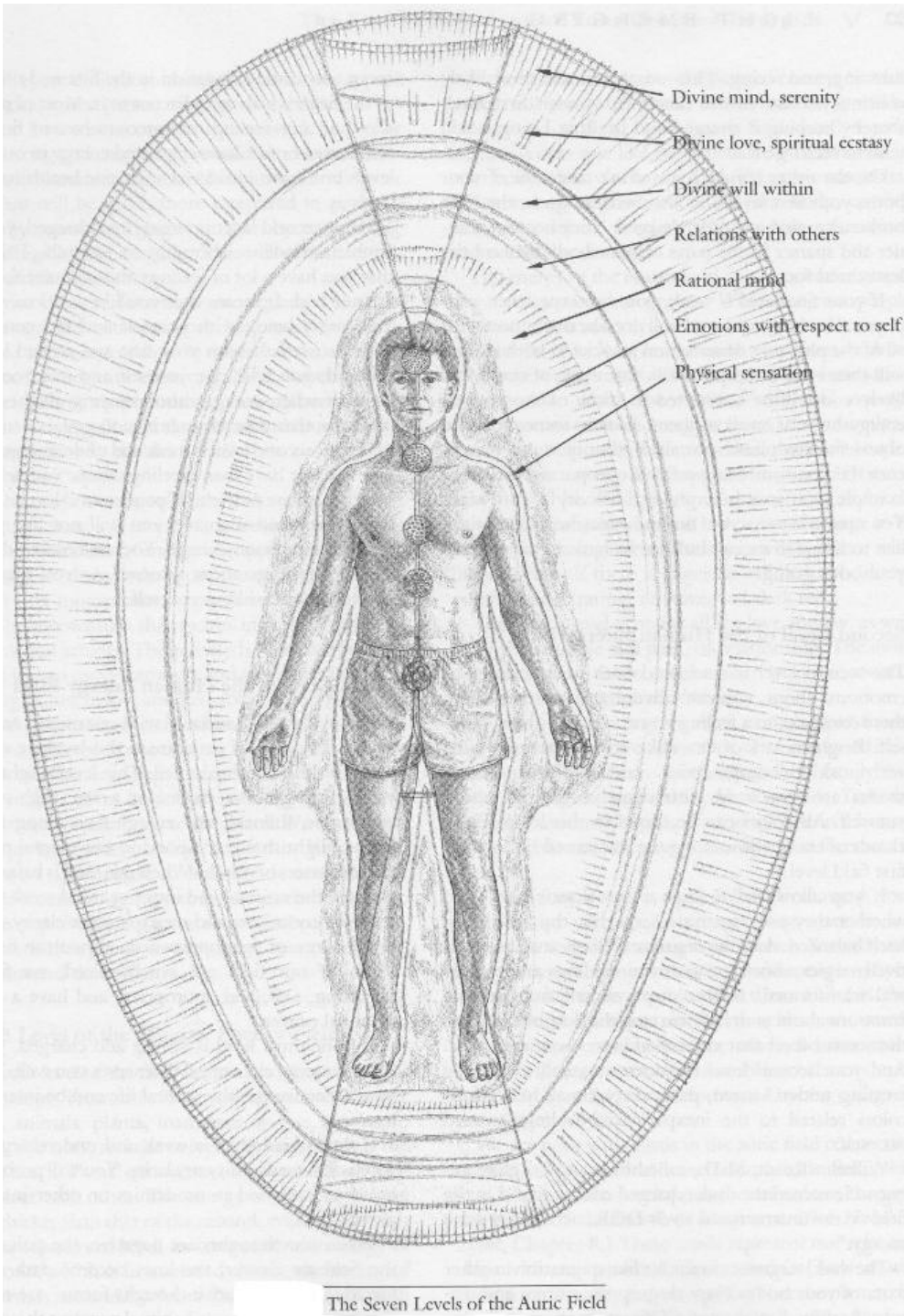
Divine will within

Relations with others

Rational mind

Emotions with respect to self

Physical sensation



The Seven Levels of the Auric Field

"Our Being"

HUMAN ENERGY FIELD (HEF)

Many people have the erroneous idea that this field is like the layers of an onion. It is not.

Each level penetrates through the body and extends outward from the skin. Each successive level is of a 'higher frequency' or a 'higher octave'. Each extends out from the skin several inches farther than the one within it of lower frequency.

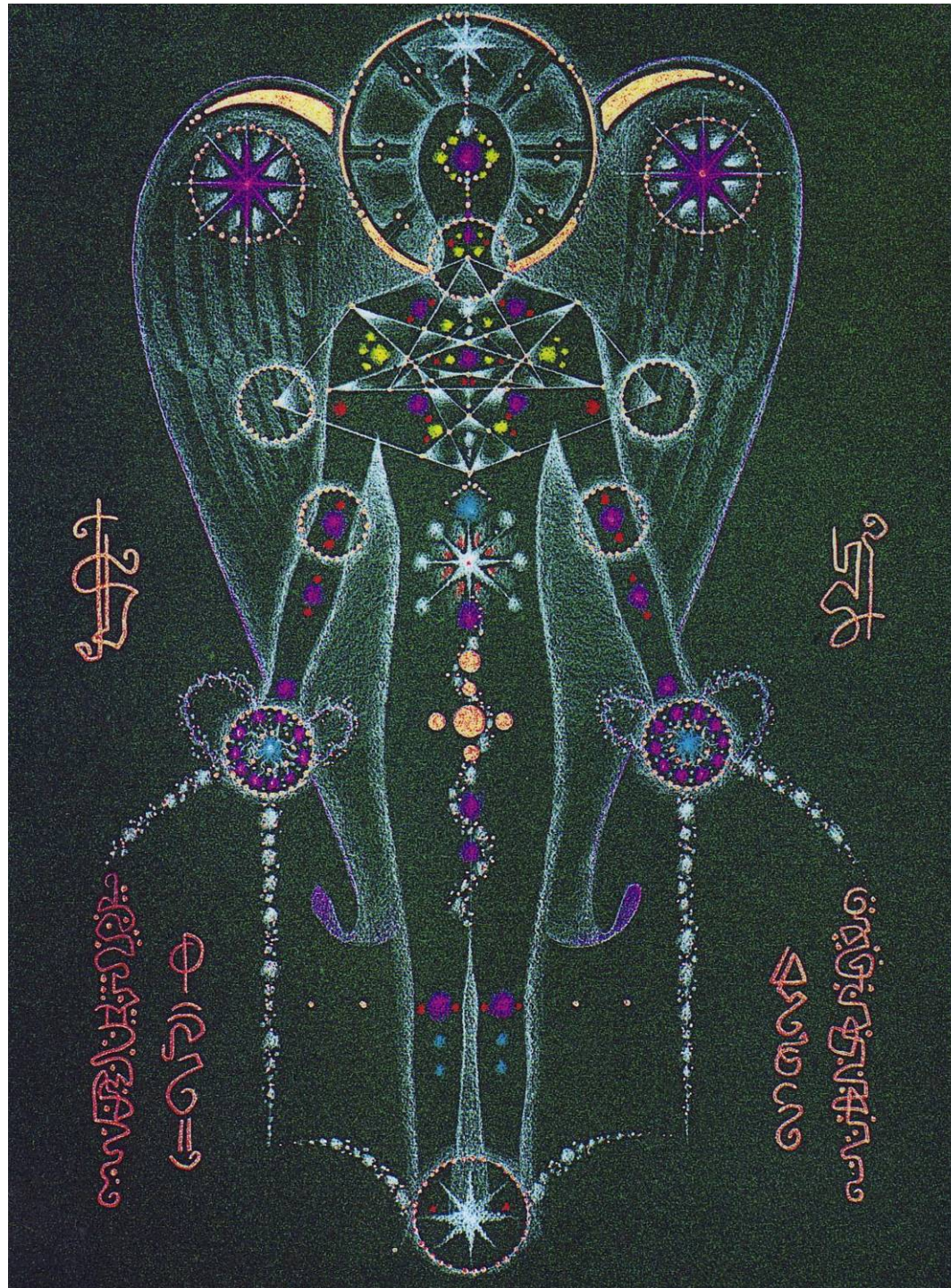
"Our Being"

Thus we have seven bodies all occupying the same space at the same time, each one extending out beyond the last.

The structured layers contain all the forms that the physical body has, including internal organs, blood vessels, etc, and additional forms that the physical body does not contain.

There is a vertical flow of energy that pulsates up and down the field in the spinal cord.

Geometries of Light
Angelicchakra Grid #2
by
Bryan de Flores



"Our Being"

First layer of the Aura Etheric Body



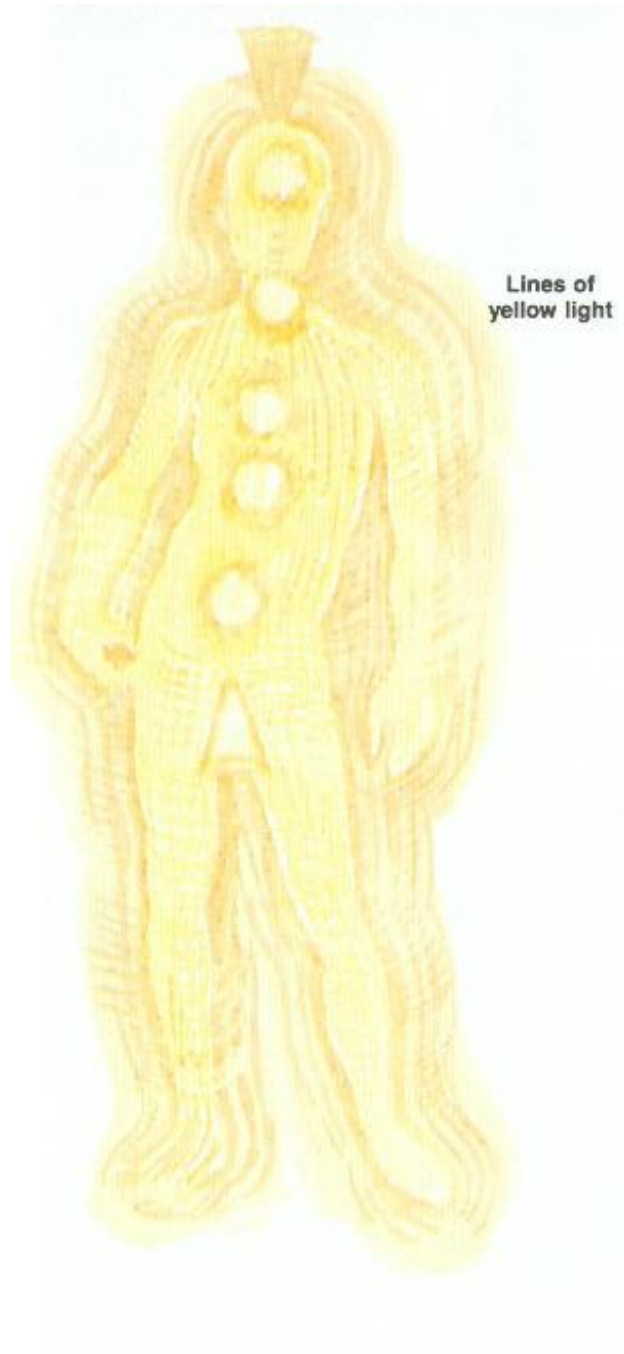
"Our Being"

Second layer of the Aura Emotional Body



"Our Being"

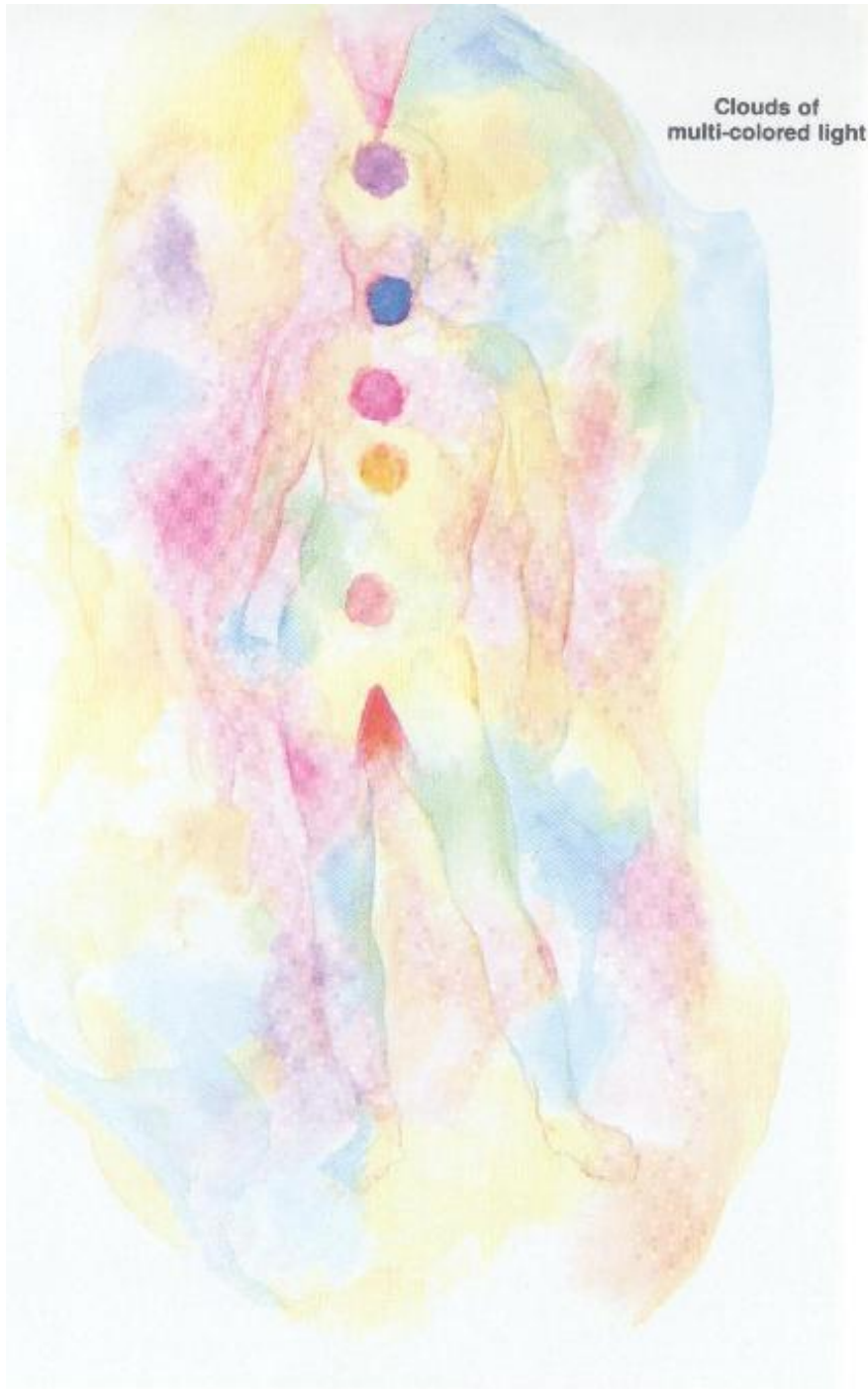
Third layer of the Aura Mental Body



The Mental Body

"Our Being"

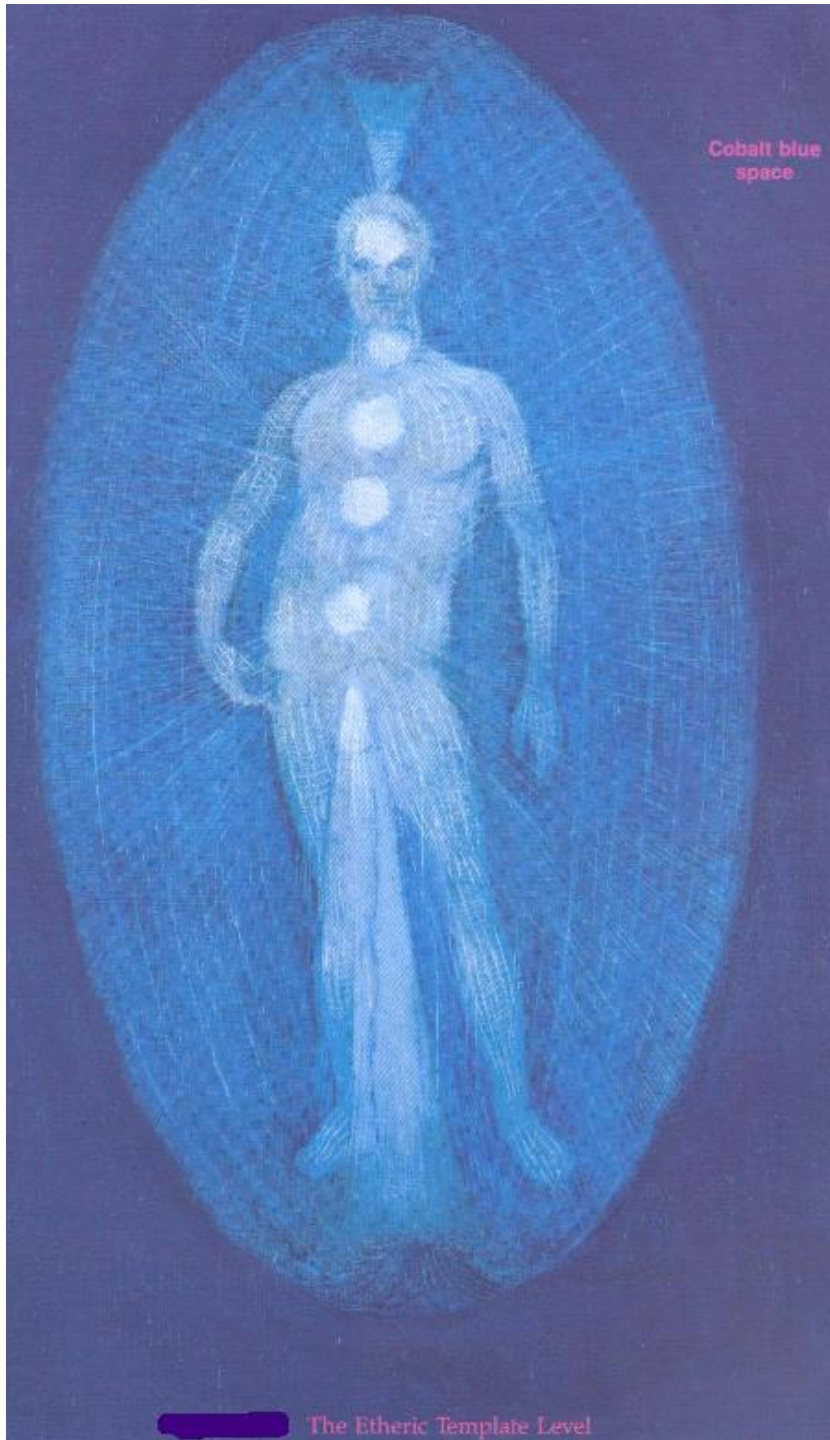
Fourth layer of the Aura Astral Body



The Astral Body

"Our Being"

Fifth layer of the Aura Etheric Template Body





"Our Being"

Sixth layer of the Aura Celestial Body

"Our Being"

Seventh layer
of the Aura

Ketheric Template
Body



"Our Being"

PiP (Polycontrast Interface Photography)



"Our Being"

Mental Body (very active mind, consciousness and domain of the ego)

The ego does not recognise nor comprehend the higher levels of your consciousness.

The ego / mind persists with an enormous amount of 'noise' blocking out the greater wisdom of your higher self.

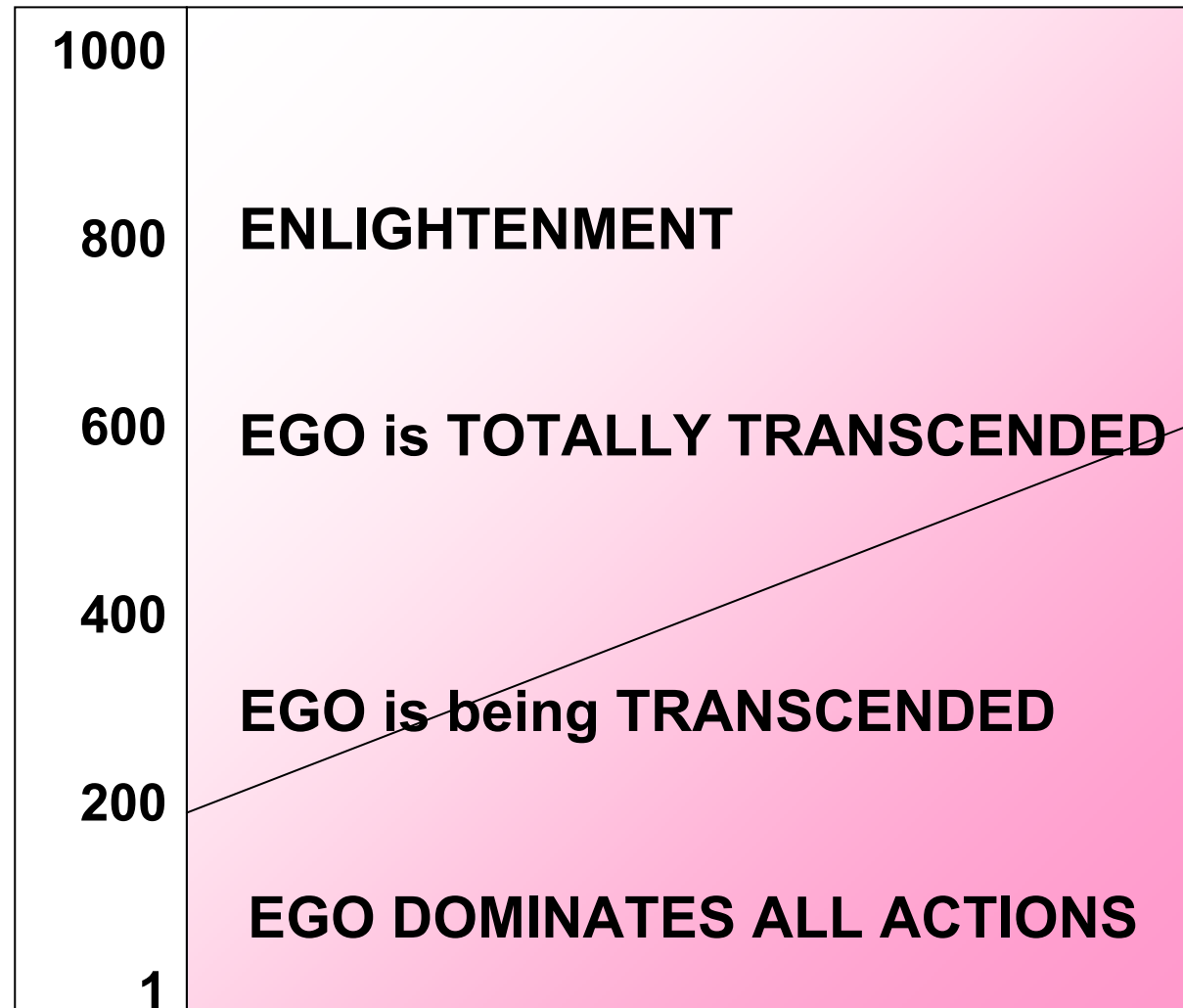
Map of Consciousness

•Avatar	1000	
•Enlightenment	700	
•Peace	600	
•Joy	540	
•Love	500	POSITIVE
•Reason	400	ENERGY
•Acceptance	350	
•Willingness	310	
•Neutrality	250	
•Courage	200	NEUTRAL

Map of Consciousness

•Courage	200	NEUTRAL
•Pride	175	
•Anger	150	
•Desire	125	
•Fear	100	
•Grief	75	NEGATIVE
•Apathy	50	ENERGY
•Guilt	30	
•Shame	20	
•Alive only	1	

Our Level of Consciousness



"Our Being"

The single most vital step on your journey toward enlightenment is this: learn to dis-identify from your mind, the light of your consciousness grows stronger.

One day you may catch yourself smiling at the voice in your head, as you would smile at the antics of a child. This means that you no longer take the content of your mind all that seriously, as your sense of self does not depend on it.

"Our Being"

"No Mind"

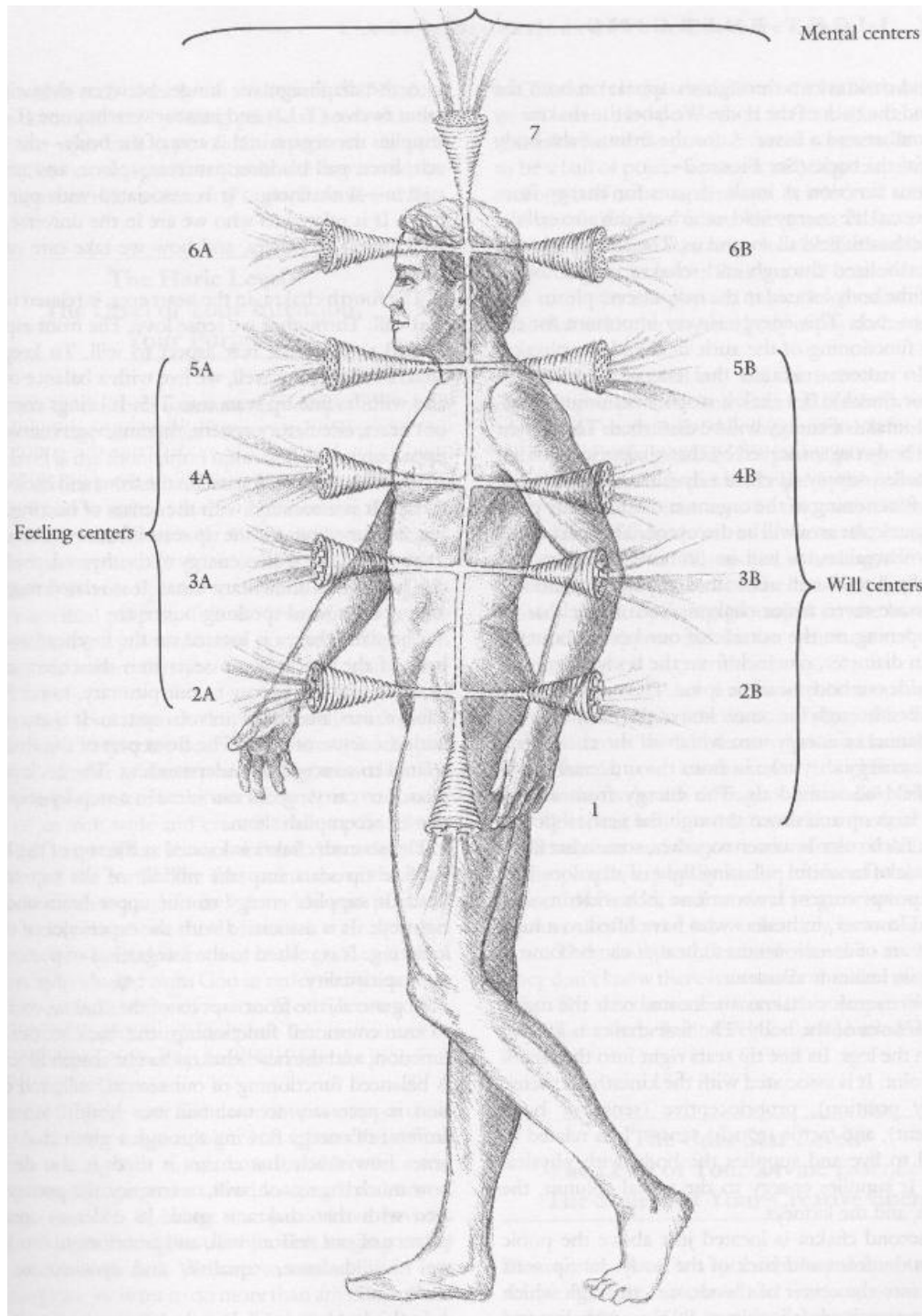
Bring an end to involuntary and compulsive thinking.

Wait for thoughts to come into your mind.

The gaps will steadily increase.

With practice, the sense of stillness and peace will deepen, There is no end to its depth.

You will feel a subtle emanation of joy arising from deep within: the joy of Being.



Location of the Seven Major Chakras

"Our Chakras"

There are seven major chakras. Each funnel has its wider opening on the outside of our body, about six inches in diameter, one inch from the body. The small tip is inside our body near the spine. The vertical power current lies through the centre line of the body. It is the large channel of energy into which all the chakras release the energy they take in from the universal life or health field all around us.

"Our Chakras"

The energy from all the chakras laces up and down through the vertical power current. Each colour is woven together, somewhat like a rope made of beautiful pulsating light of all colours. The vertical power current is about one inch wide in most people. However, in healers who have lifted to a high altered state of consciousness to heal, it can become as large as six inches in diameter.

"Our Haraic Level"

The haraic level is one quantum leap deeper into your nature and one dimension deeper than the aura. The haraic level is the foundation upon which the aura rests. Hara is defined by the Japanese as a centre of power within the lower belly. While the aura is related to your personality, the haraic level is related to your intentions. It corresponds to your life task or your deeper spiritual purpose. It is the level of your greater incarnational purpose and your purpose in any given moment.



Hara of a Healthy Person

"Our Haric Level"

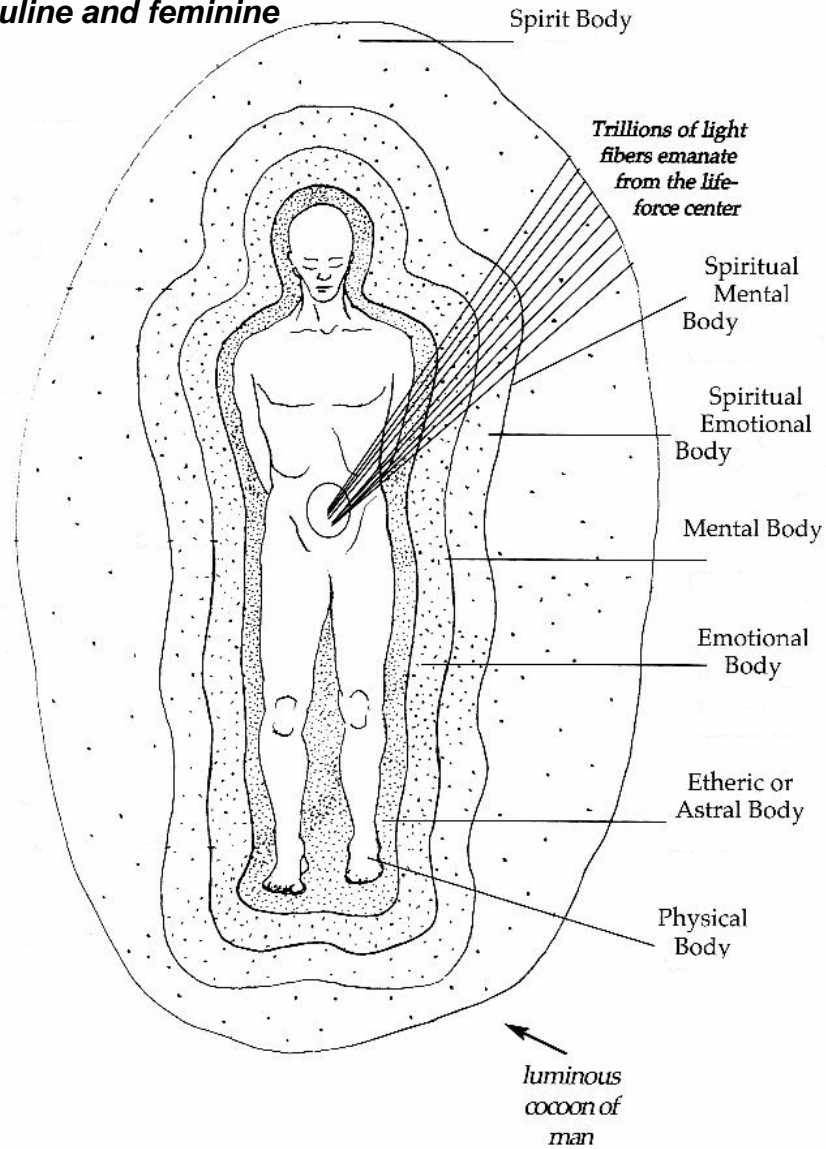
Healer's brain waves pulse not only at the same frequency (7.8 – 8.0 Hz) but also at the same time as the earth's Schumann waves.

What healers call grounding into the earth is the action of linking up with the magnetic field of the earth, both in frequency and in phase.

Healers ground their haric line deep into the earth.

The Seven Bodies of Man

All bodies encompass aspects of masculine and feminine



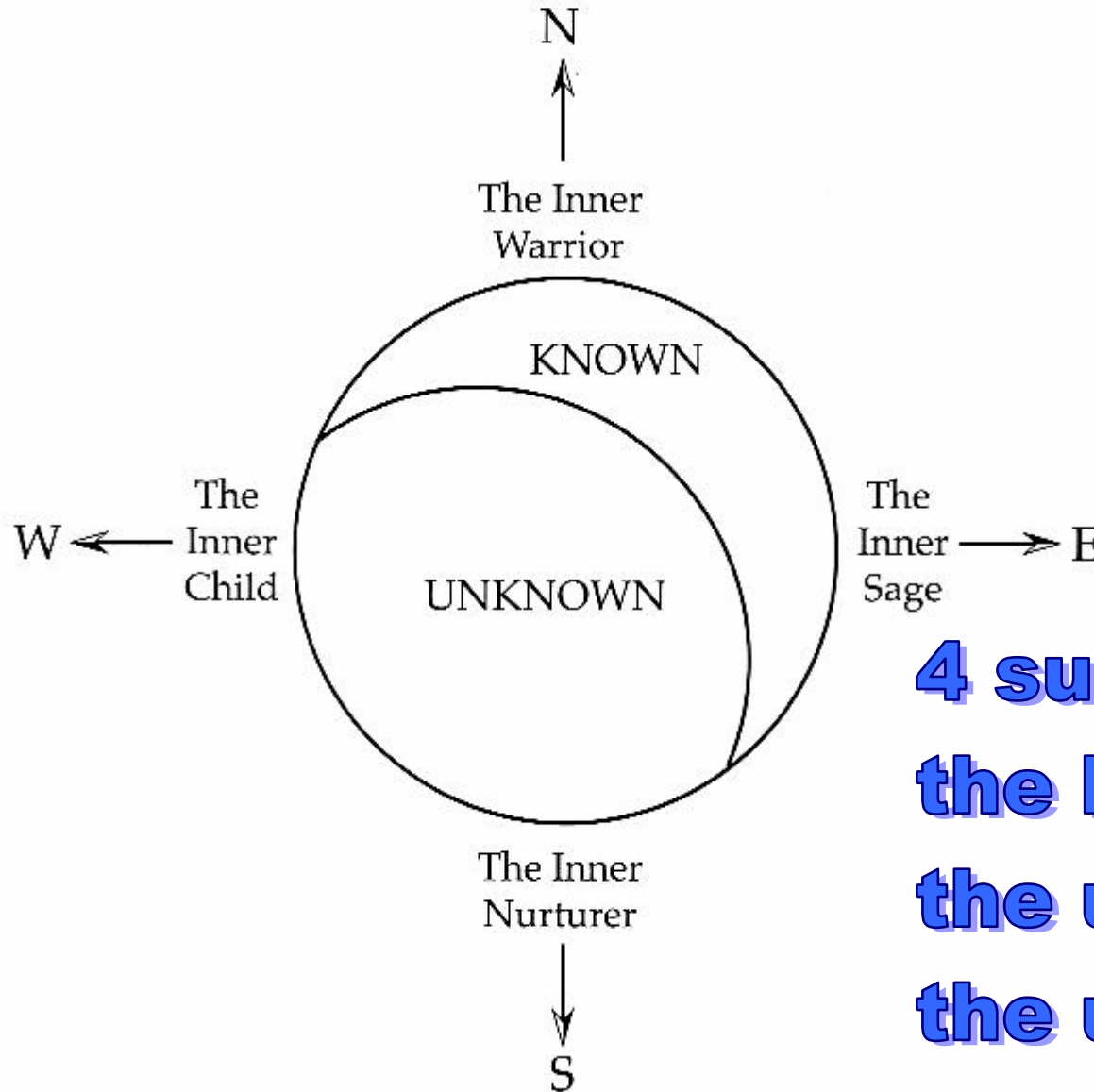
"Our Being"

it is the trillions of light fibres that expand out and fills the universe that makes us all ONE !

The bodies are superimposed over each other. The trillions of light fibers from the life-force center penetrate all other bodies forming the luminous cocoon.

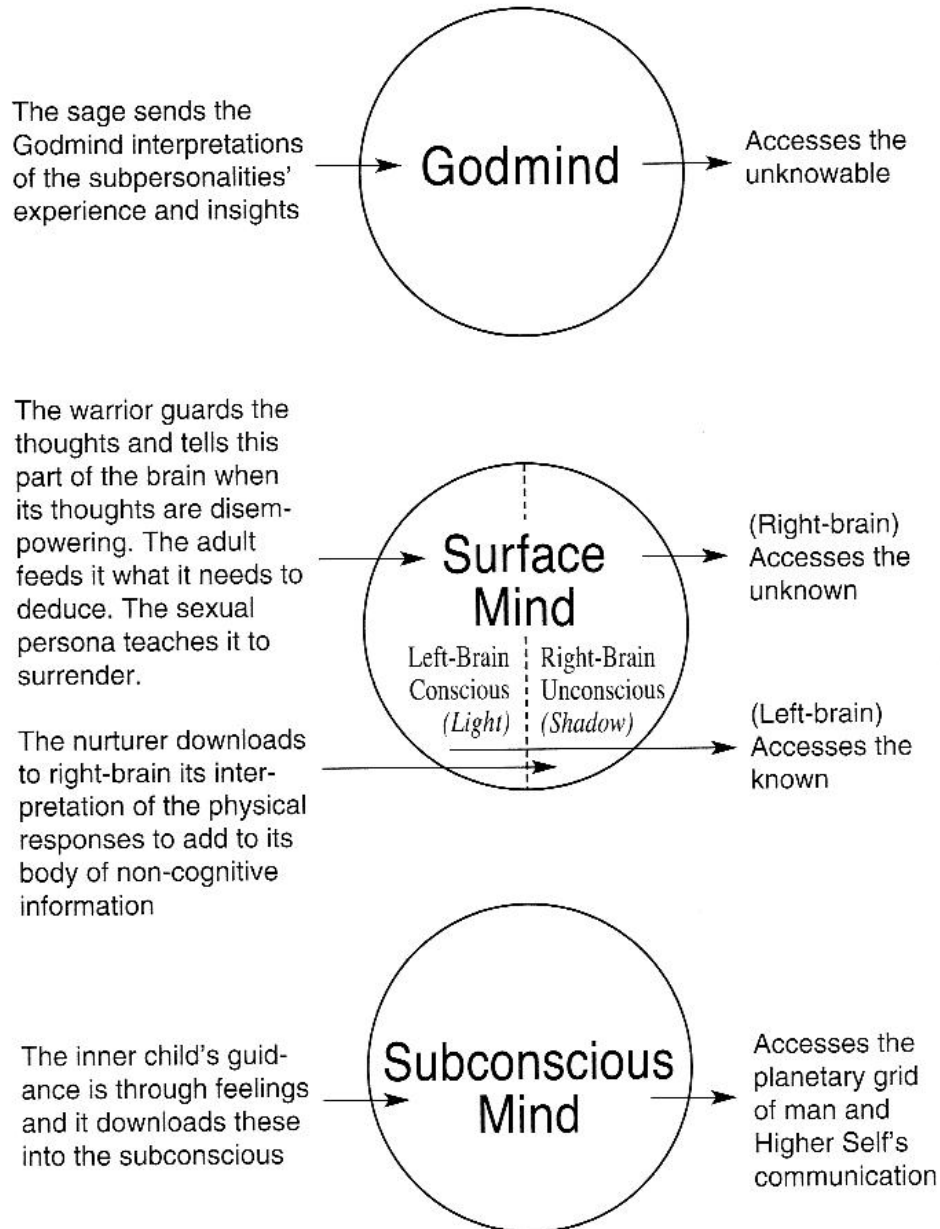
Relationship of Sub-Personalities

"Our Being"



4 sub-personalities
the known
the unknown
the unknowable

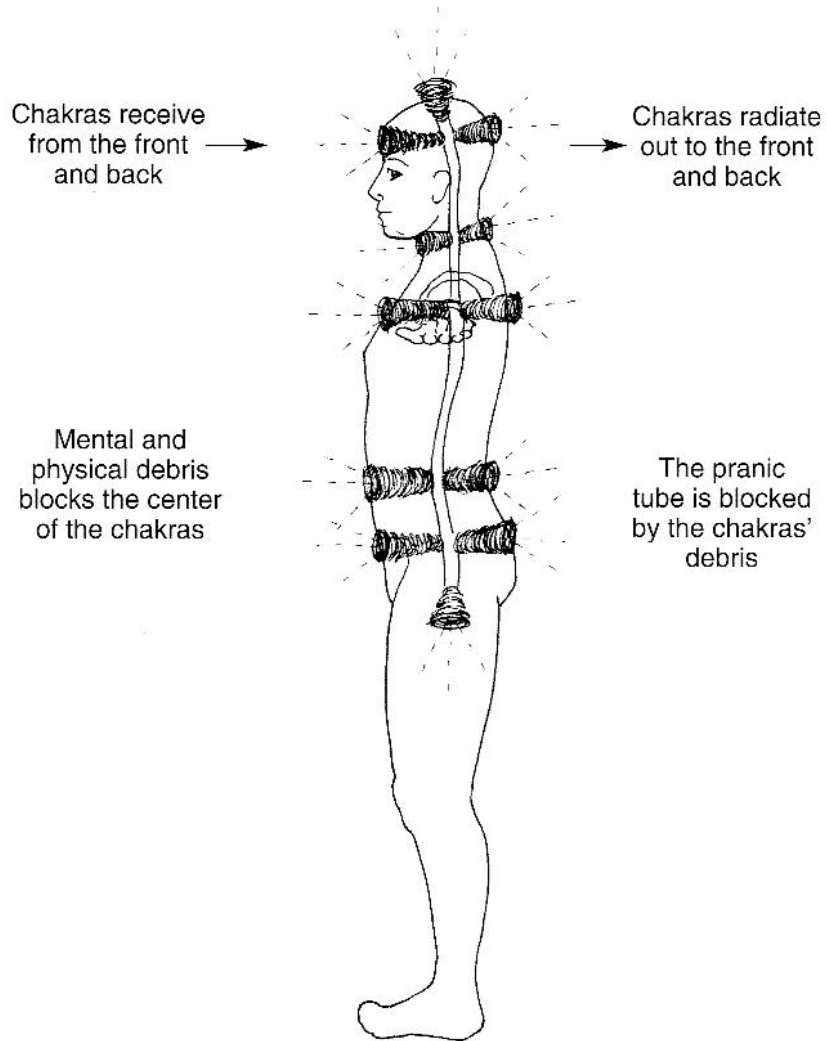
Three Minds



"Our Being"

balance left and right brains and you achieve Godmind

Phase I of Chakra Opening

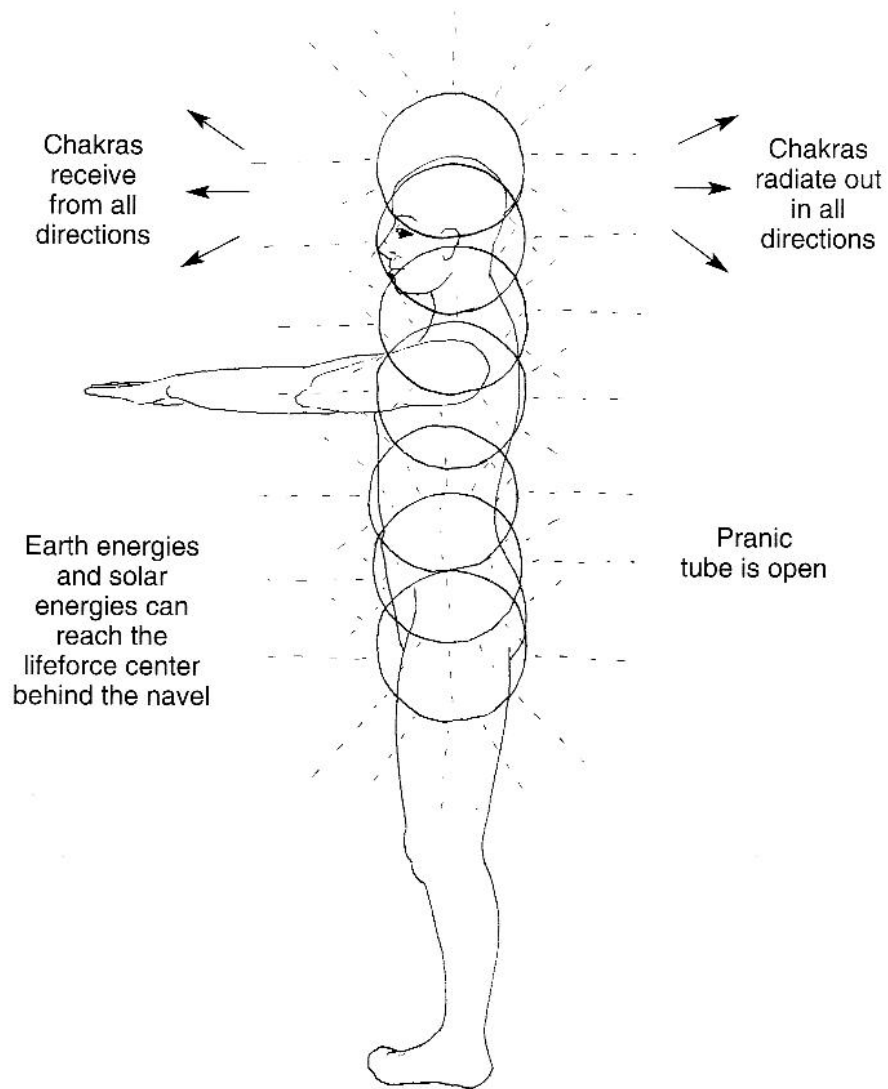


"Our Being"

typical structure

Seven levels of light enter the chakras. It cannot immediately assimilate and download into the endocrine system because of the blockages and acidic pH present. This occurs in the cells of a person who hasn't overcome the past and holds on to that which no longer serves him.

Phase II of Chakra Opening



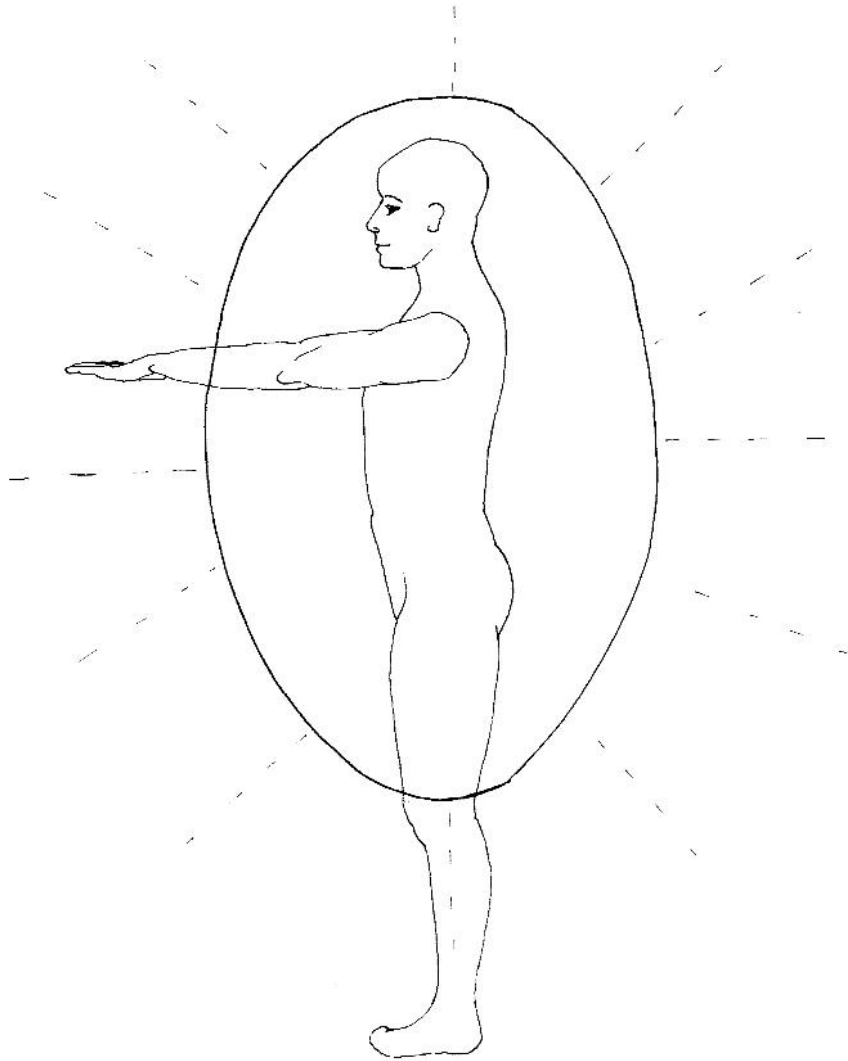
"Our Being"

**enlightenment
god-realisation
results in chakras
opening and
forming orbs**

Less sleep is needed while the endocrine system downloads the seven levels of light. Light is information.

Phase III of Chakra Opening

"Our Being"



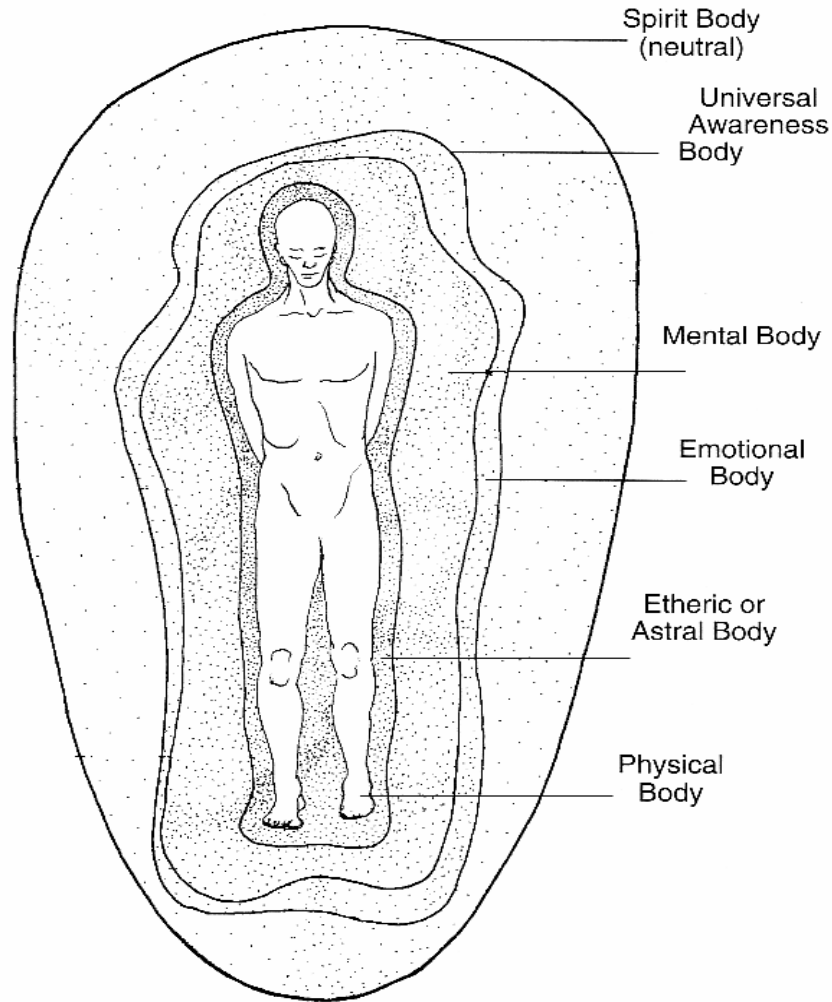
**orbs then
expand and
form a sphere**

The chakra spheres have opened into a unified chakra field. The mental body no longer blocks access to light from the higher bodies. The life force center has moved up to the heart.

Bodies of Man

*Masculine bodies are
electrical and feminine
bodies are magnetic in nature*

All bodies encompass aspects of masculine and feminine

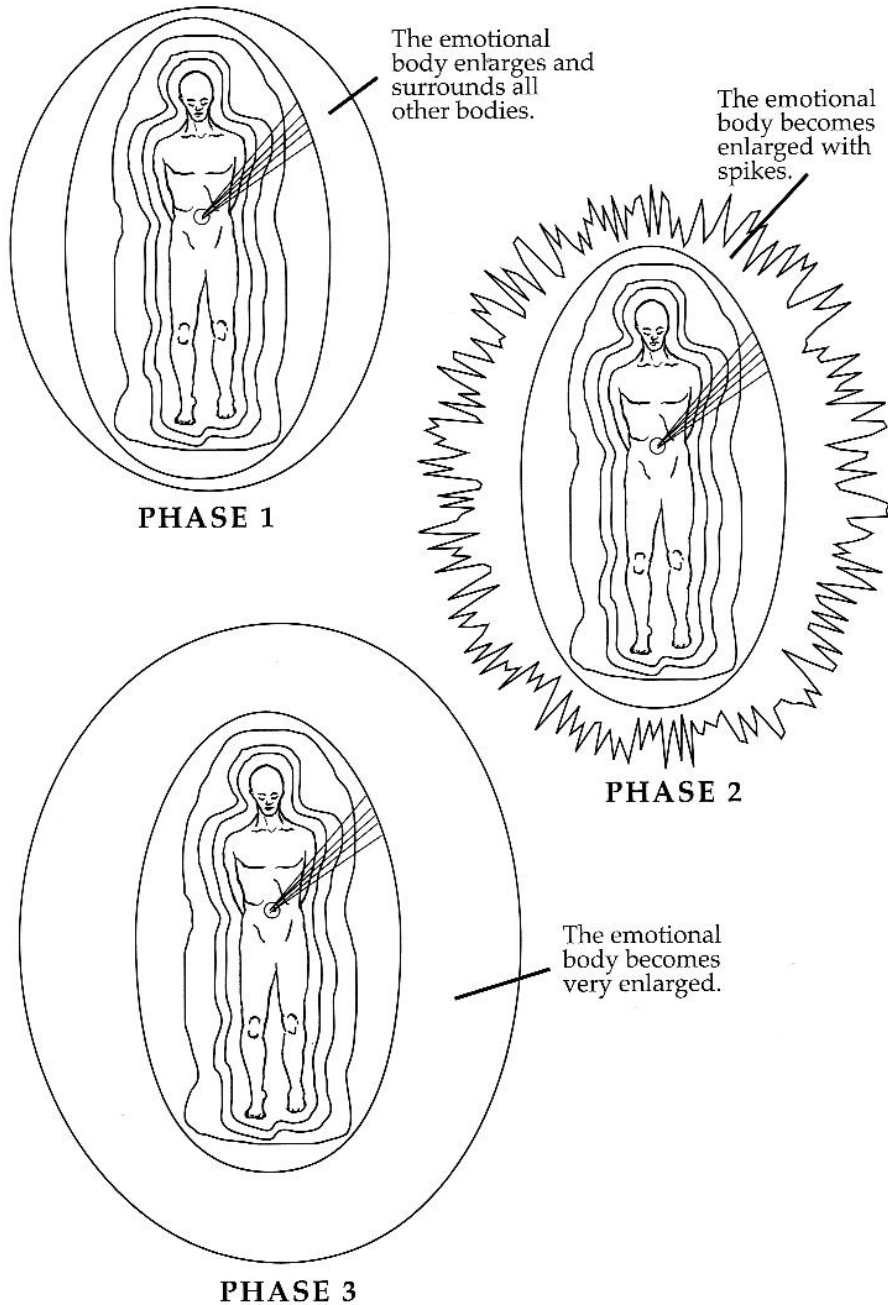


The bodies are superimposed over each other and form the luminous egg (cocoon) of man. Death rolls against this egg and when this rolling force cracks the egg, its lifeforce spills out and the person dies.

"Our Being"

**our cocoon
is a luminous
egg**

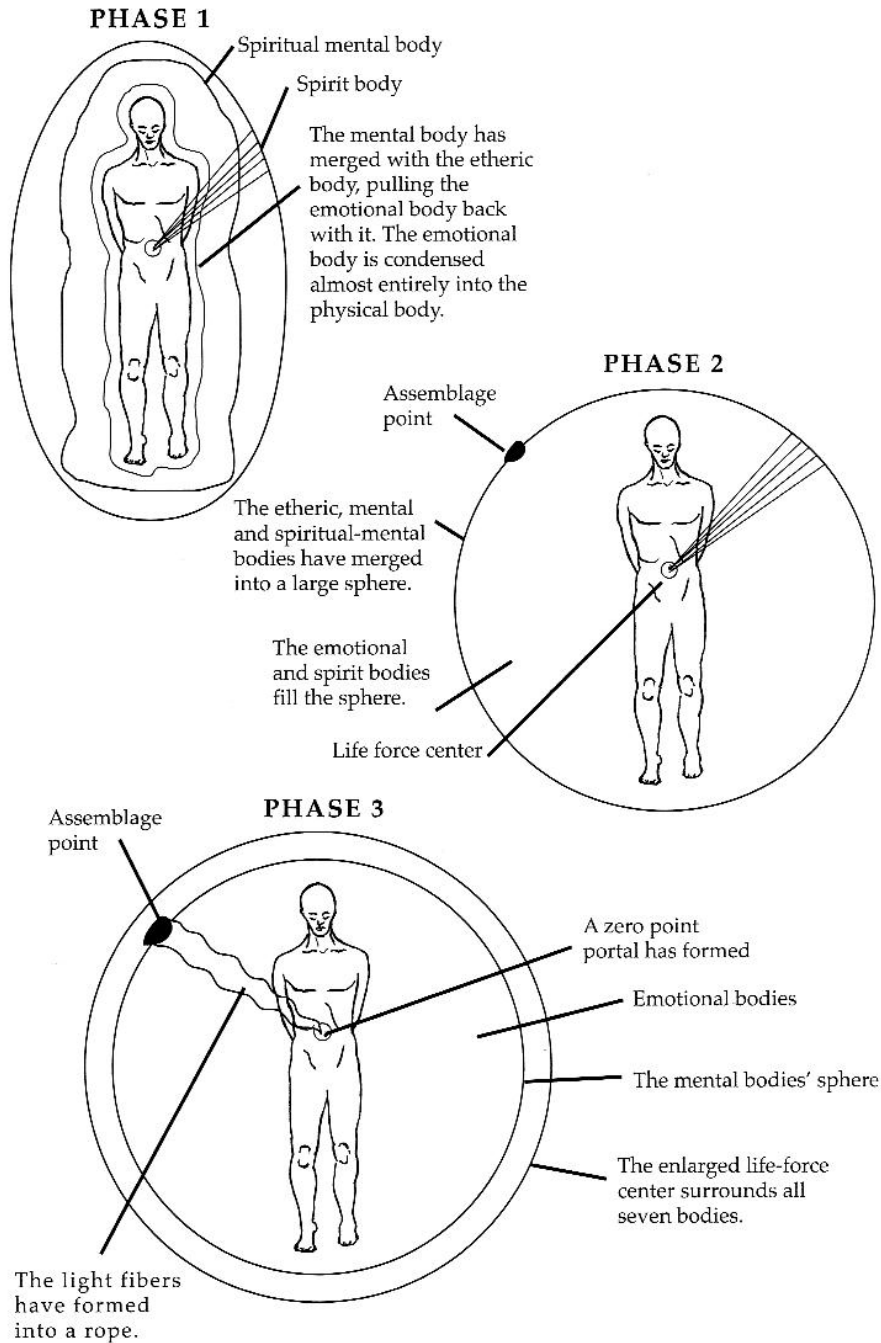
Seven Bodies of Man in God Consciousness



"Our Being"

God Consciousness

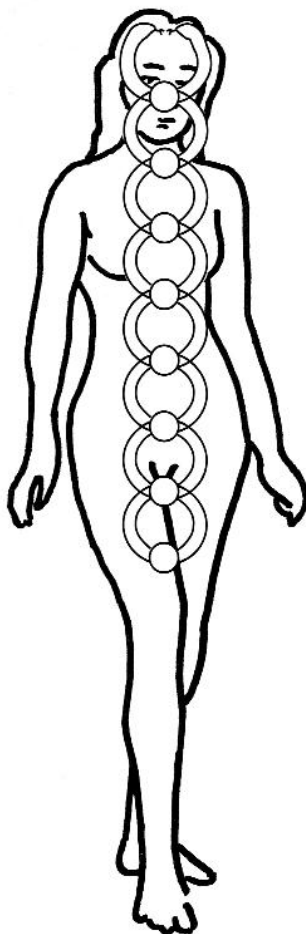
The Seven Bodies of Man in Ascended Mastery



"Our Being"

Ascended Mastery

"Our Being"



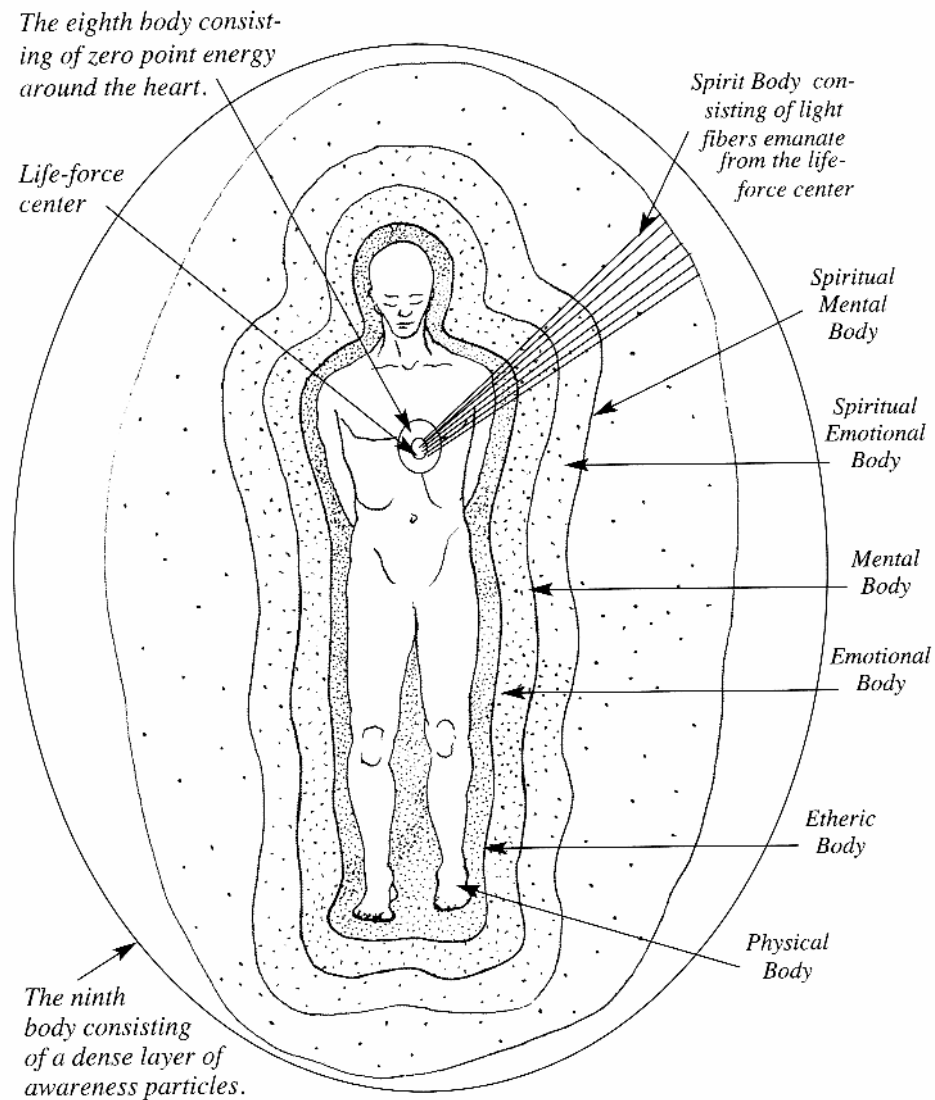
**hormonal excretions
that hold the
higher bliss**

In the Immortal Master the alpha chakra (a hand length below the spine) and the second heart (on the sternum) are fully opened.

The energy meridians move (sideways in women, front to back in men) through the centers where the chakras used to be before they formed a unified chakra field. The meridians end slightly above the pineal gland causing it to excrete life hormones for heightened bliss and immortality.

The Nine Bodies of Man

(Corresponding with the Nine Bodies of the Cosmos)

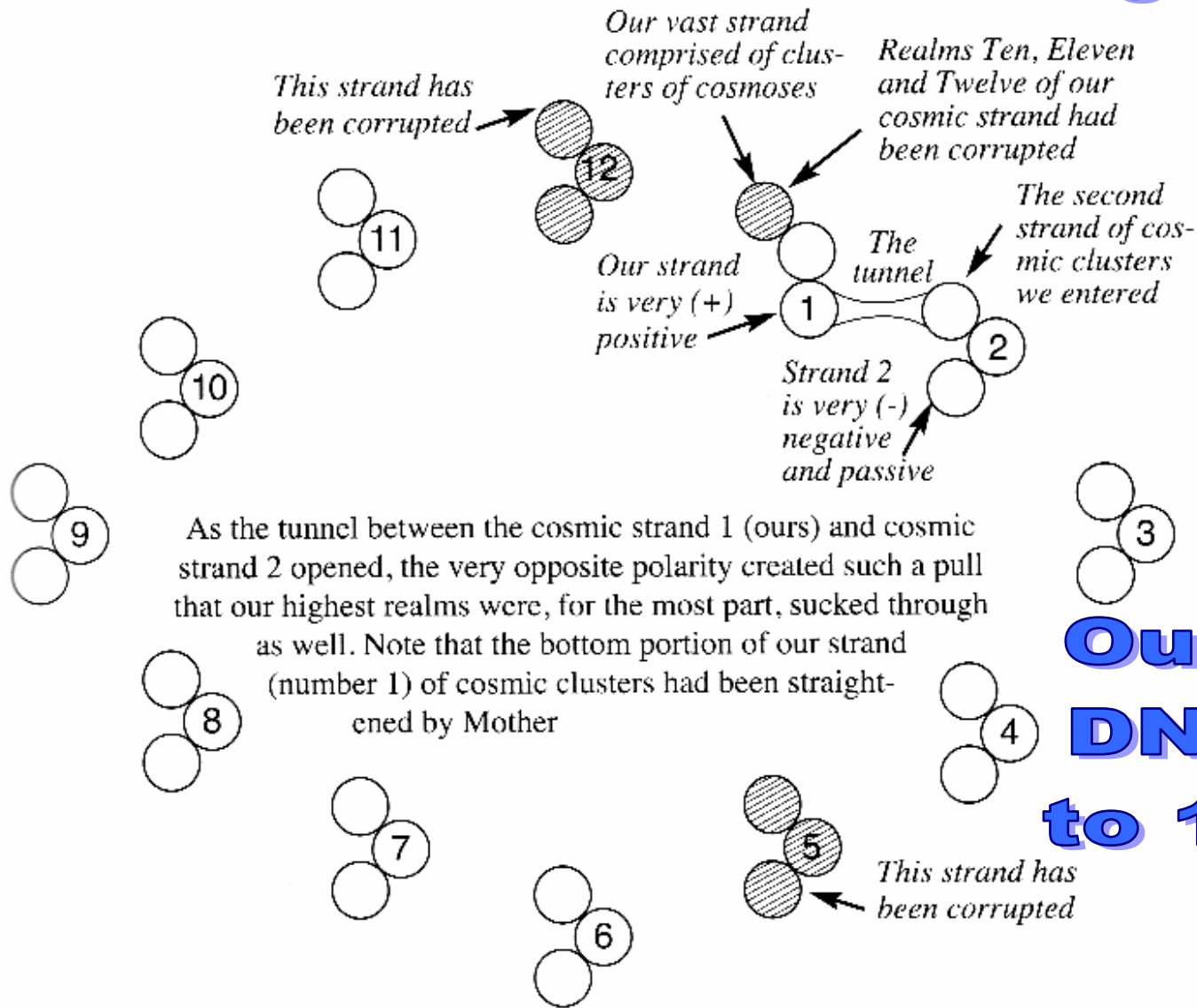


"Our Being"

**note the shift
in location of
core soul.**

In April 2007, man's life force center was moved up from behind the belly button to the heart center. In May 2007, the cosmos, and man as the microcosm, received the eighth and ninth bodies. The eighth body consists of zero point energy around the heart chakra (now surrounded also by the small sphere of life force).

The Twelve Strands of Cosmic Clusters "Our Being"



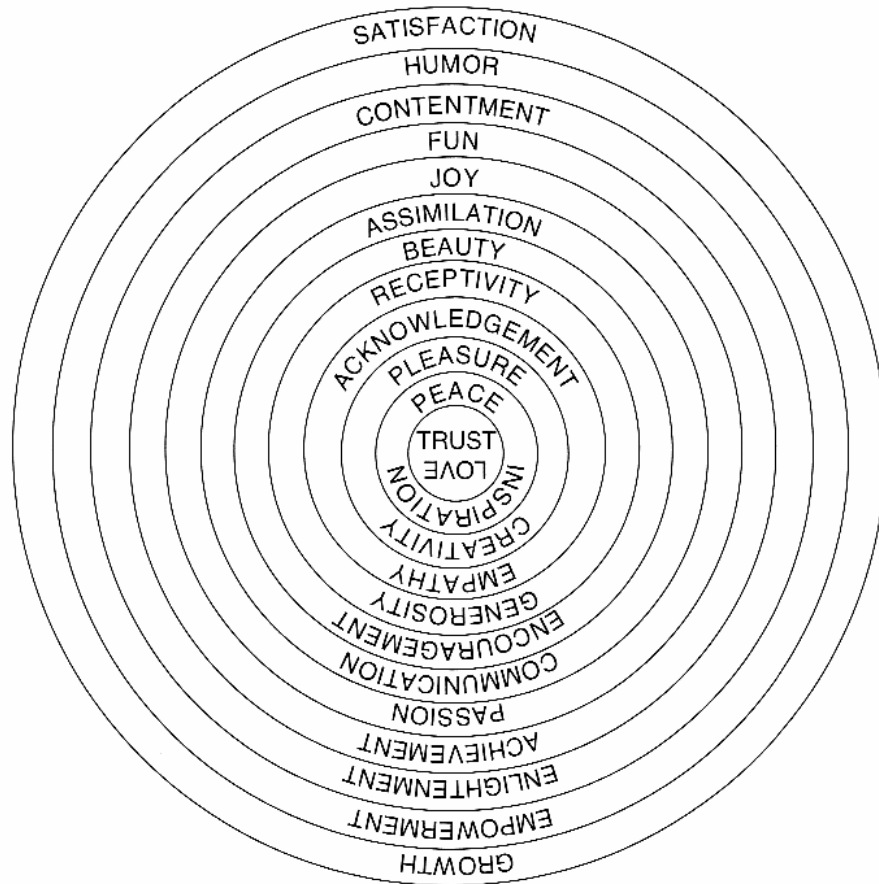
As the tunnel between the cosmic strand 1 (ours) and cosmic strand 2 opened, the very opposite polarity created such a pull that our highest realms were, for the most part, sucked through as well. Note that the bottom portion of our strand (number 1) of cosmic clusters had been straightened by Mother

Our 2 strand DNA may go to 12 strands

Vast DNA-type strands of cosmoses lie in clusters of twelve, as shown. Our cosmos is part of one such strand. We had cleared the bottom part through the ascension but the top corrupted part had to be sealed off.

The Twelve Bands of Emotion of the Cosmos

In the previous cycle light formed the matrix of the cosmos, while emotion and awareness moved. In the new cycle, rings of emotion form the matrix. Omnipresent awareness permeates everything.

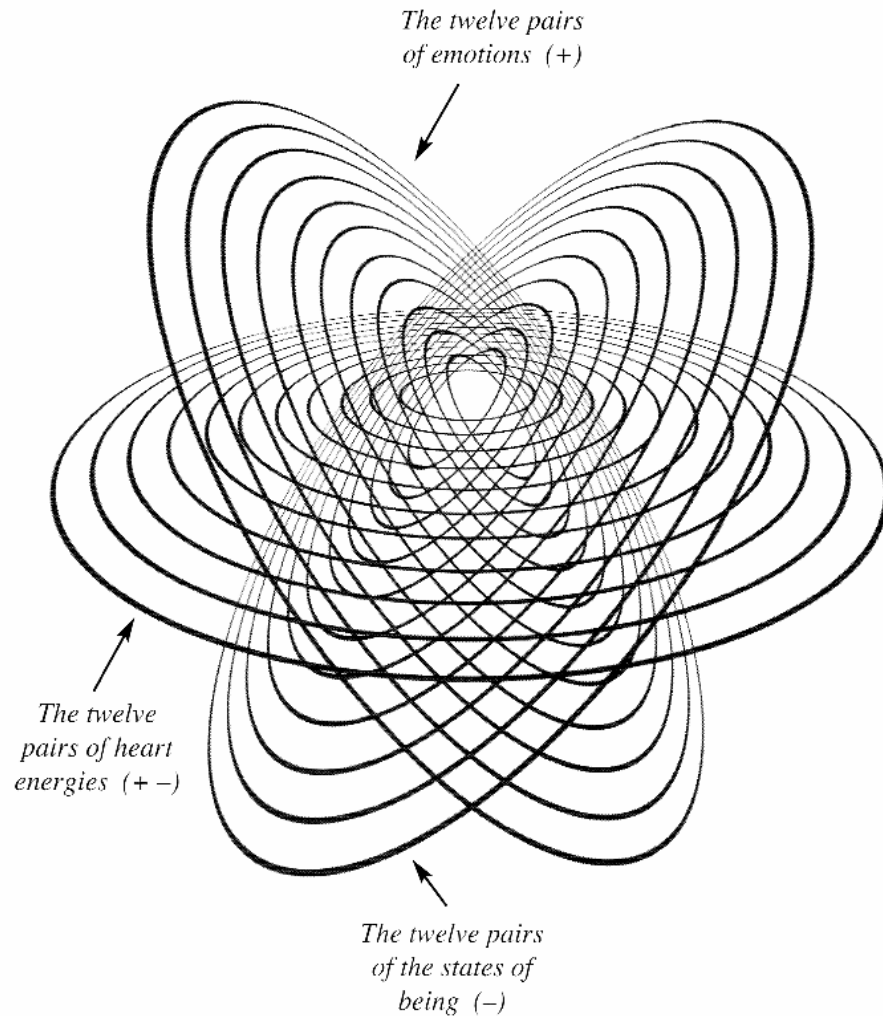


The bands are represented by 12 Goddesses. Each band represents two opposite poles of emotion. The poles pulse each other.

"Our Being"

12 bands of emotions

How the Emotions and States of Being Intersect



"Our Being"

1/3 positive
1/3 observing
1/3 negative
all to assist
in our learning

The rings each represent a pair that pulse between their positive and negative aspects. The wheels also pulse with one another. These are found not only as the grids of the cosmos, but around the body of man.

"Our Core Star"

Level 26 of the Auric field is the Core Star.

The Core Star is a further quantum leap deeper into who we are than the auric level and is related to our divine essence.

Each star is the internal source of life within.

In this inner place, we are the centre of the universe.

Here is localised the divine individuality within each of us.



Core Star

"Our Core Star"

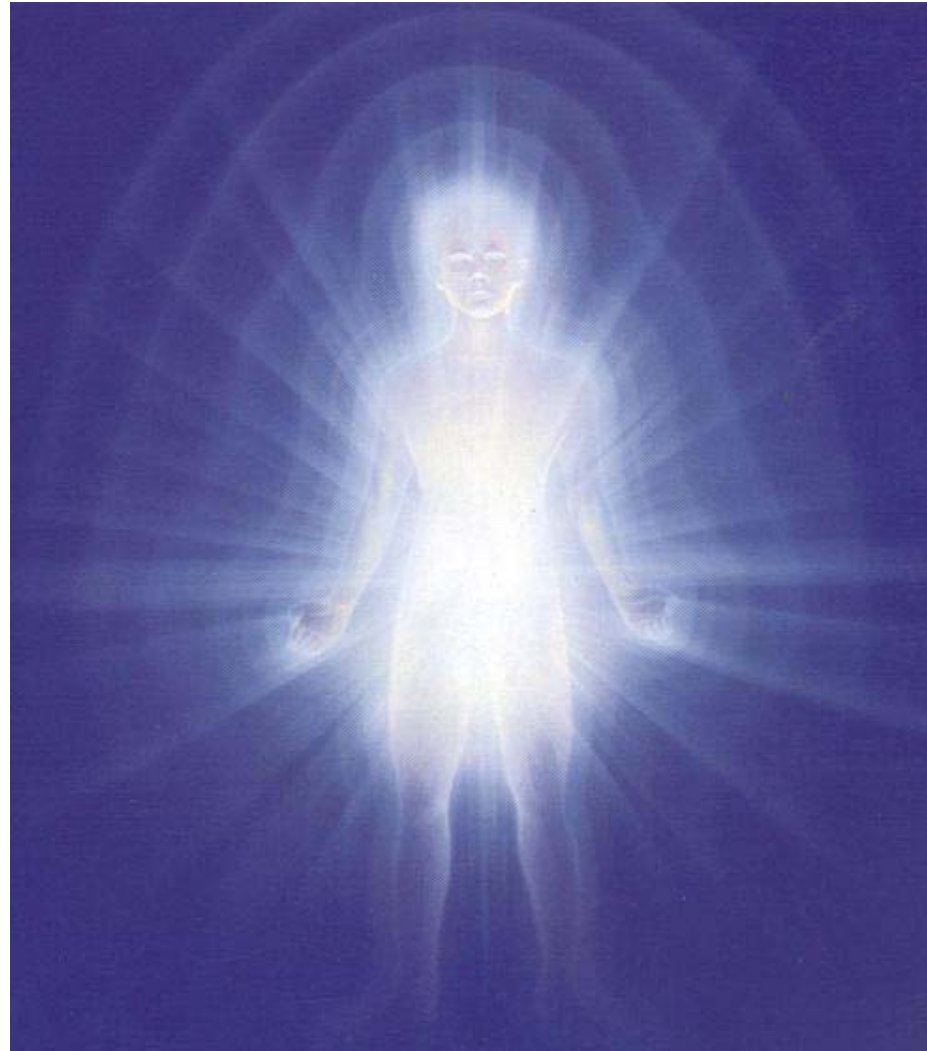
Our core is the most essential nature of our being and is completely unique to each individual.

It has been there within each of us since before the beginning of time.

Indeed, it is beyond the limitations of time, space, and belief.

It is the individual aspect of the divine.

"Our Core Star"



"Our Core Star"

No negative experiences have ever really tainted your Core Star.

Yes, our reactions to negative experiences may have covered it, or shrouded it, but they have never really changed it.

It is our most basic nature.

It is the deeper goodness within each of us.

It is who we really are.

"Our Core Star"

Our Core Star is from this place within that all our creative energies arise.

It is the eternal fountainhead within each of us from which all our creations come.

"Our Being"



The Auric Fields of a Couple in Love

"Our Being"

Everything you have ever done in your life began not only with good intentions but also always with pleasure.

When these energies flow directly from the core through the haric level of our life task, through the auric level or our personality, and through our physical bodies, we create health and joy in our lives.

Core Star Level of a Group of People

