

PASCAS FOUNDATION (AUST) Ltd



PASCAS FOUNDATION (AUST) Ltd
11 Crenshaw Court
Parkwood 4214 Queensland Australia

ABN 23 133 271 593

www.pascasworldcare.com

Bs +61 7 5594 0479

www.pascashealth.com

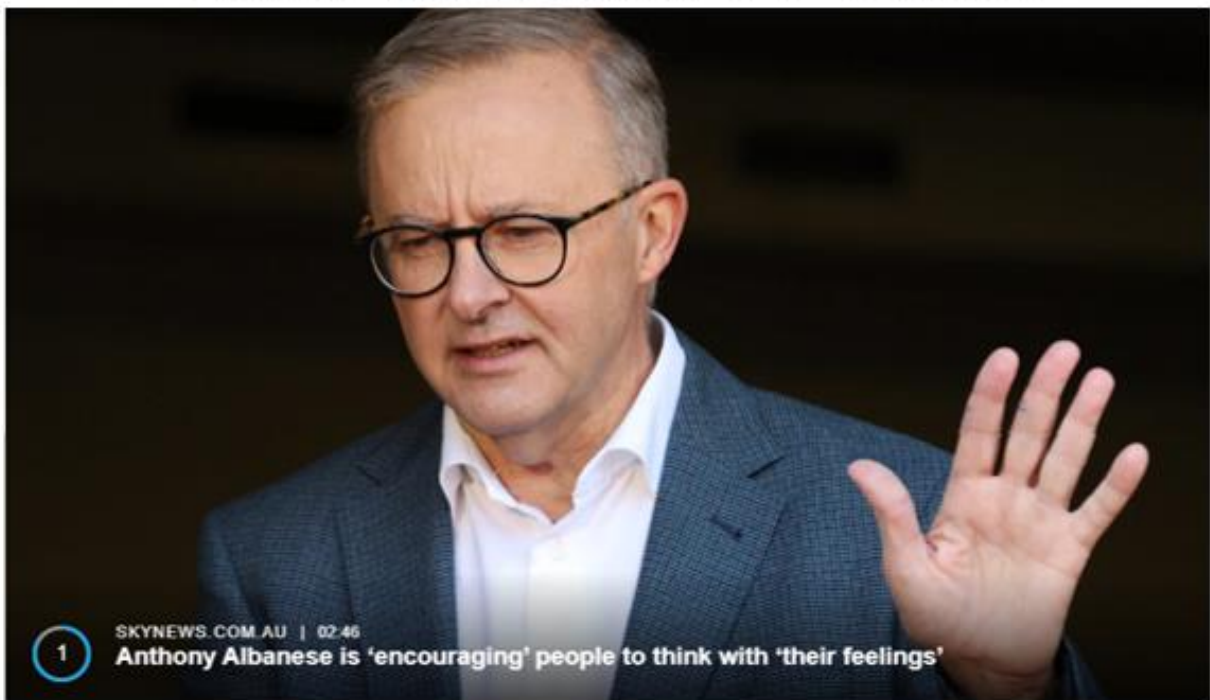
Em: info@financefacilities.com

8 January 2023

Feelings OR Thinking

Prime Minister of Australia

The Hon Anthony Albanese MP was sworn in as the 31st Prime Minister of Australia on 23 May 2022.



Anthony Albanese is 'encouraging' people to think with 'their feelings'

December 30, 2022 - 10:09PM [sky news .com.au](http://skynews.com.au)

<https://www.skynews.com.au/details/6318010940112>

It is encouraging to find a leader of 26,250,000 people (January 2023) to consider that feelings are an important aspect of one's way of living, but what might you be 'feeling' that may be misleading about his guidance?

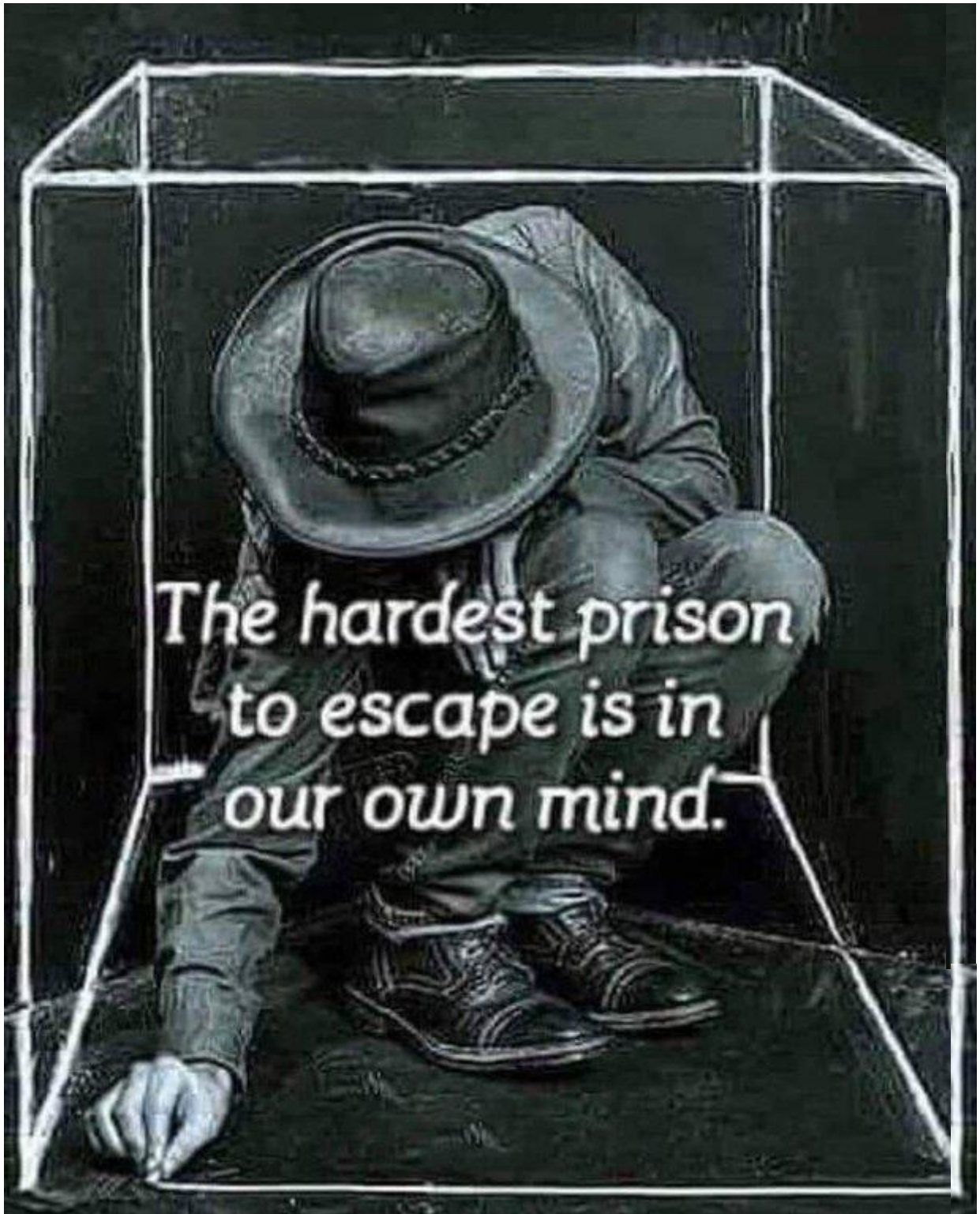
1. Our feelings are not of the mind, we cannot and do not 'think' feelings.
2. Our feelings arise / emerge sometimes spontaneously and sometimes over time, our feelings can be very decisive and other times very subtle requiring great discernment yet they are never of 'thinking' or of the mind. Feelings may be spontaneous and/or intuitive – all of which we typically suppress or ignore.
3. Our feelings are exquisite and are always of and in truth and thus loving in nature.
4. Our thinking is of the mind, our thoughts are subjected to the cesspool of indoctrination and propaganda that we are all subjected to from the moment of our conception. Incarnation follows 16 days after conception when the newly forming embryo begins pumping blood.
5. Our mind is of our spirit body, not of our physical brain, yet no one, particularly of science, even considers this. When it is considered that we are losing our memory, it is the malfunctioning of the transmission of data from the spirit body mind to the physical brain. Everything is permanently recorded, even the events around our conception can be recalled. Conception occurs 16 days before incarnation which is the moment when our newly forming embryo commences to pump blood.
6. Our minds are unable to discern truth from falsehood, our minds are addicted to untruth and the control of others as well as the environment in which we live, and consequentially our thoughts are mostly erroneous – yet our feelings are always of truth.
7. We can't think with our feelings, so the Australian Prime Minister is screwed up in his understandings and guidance. We are to act on our feelings, not think with them. We can think about our feelings – but not 'think' them.
8. It is amazing how all societies are so mucked up by the distortion of the meanings of words and their uses, all of which is suppressive and driving us deeper into submission of our mind and its controlling addictions and errors.
9. We are to aspire to living Feelings First. This is living through and by our feelings having our minds to follow in support of what our feelings are guiding us to consider and embrace. Should we embrace Feeling Healing then we are beginning to heal what we each have taken on our Rebellion and Default.
10. By living true to our feelings, we are living true to ourself, consequently then we are living true to our Heavenly Mother and Father. It is that simple.



Feelings First with Mind to follow in support.

Realisations of the following are ever so important:

1. Our mind is within our spirit body and functions through our physical brain.
2. Our feelings are of our soul and come up through our heart area separate to our brain.
3. It is through our feelings that our truth and love emerge and it is also through this truth that we can heal our personal Rebellion and Default, bring harmony to our physical body, and evolve.
4. It is by living feelings first, having our mind to follow in support, that harmony throughout all of humanity can and will unfold. This is our destiny for those who embrace their soul based feelings which are always in truth and love.



“THOUGHTS on TRUTH”

8 January 2023

James chatting to Sam: I was speaking with my Angels about the theory and truth, some things that might interest you. It's all technical, and I'm still grappling with it, but I'll use this opportunity writing to you to put my thoughts in order.

As you understand, the Evil Ones were evil in all the ways they were, that being the 'truth' I guess you could call it, of the Rebellion (200,000 years ago). And then Eve and Adam were evil in their ways, being their 'truth' of the Default (more than 38,000 years ago). The Urantia Book says after the Default, Eve and Adam continued to love each other, even though they and their lives, and their relationship was fucked, but I see it more that they didn't truly love each other, it just moved into a distorted mind love, a sad sympathy for each other in their loveless and lost hopeless plight they'd brought upon themselves.

So their relationship right from the beginning, once they materialised into the Rebellion, themselves being of lesser truth than the Evil Ones, started to fail, it taking a while to fall apart to the extent where they both openly and technically Defaulted. They then continued their decent from the pure Celestial level of truth down to that of the first World truth, we are all now conceived into. And there are only seven Mansion Worlds, so seven worlds of untruth we can live rebelliously, there are not eight, or ten or a hundred, so our evilness is limited.

So we are conceived both on the cross of untruth, the rejection of all that is Truth, the rejection of Mary and Jesus, and into the complete relationship failure of Eve and Adam, the rejection of each other, the rejection of their family, the rejection of their children. So there is no way we can have a true life and true relationships, it all being corrupted, and at best a 'nice' and 'loving' mind contrived affair. All based on the rejection and denial of Truth.

So humanity as a whole has had to outwork, bring out, express, all the untruth, all the evilness of the Rebellion, the evilness of the Evil Ones, which we're now arriving at in the world's history, and at the same time, live out in our fucked relationships the untruth of Eve and Adam's failed relationship. So the whole selfish, self-absorbed, self-egocentric narcissistic attitude of I am God and fuck you all, is one side of our relationship failure, with the other sides failure being, we're madly in love, soul-mates, and everything is wonderful, it all amounting to the same thing, just the extreme expressions of Eve and Adam's failure. Because the truth is, in our rebellious state, we have to be like them in their default, and not like how they were as truly united loving Celestial soul-mates before their Fall. So no one is with their soul-mate, because we're all on Eve and Adam's bottom line of relationship failure. So we're understanding, accepting, and coming to terms with that failure. We can still remain together, being as you say, so co-dependent, whilst we fully acknowledge the truth of Eve and Adam, that there wasn't, and so isn't, any love. And all because there is no truth.

So from what I understand, humanity is being held up and together by our Angels. If they pulled their support, humanity would perish. And yet a humanity is meant to be supported by Angels in its own natural survival, and not entirely dependent on them for its continued existence.

Without our Angels our scientists would possibly have released a 100% deadly pathogen, one that no one's natural immune system could cope with, annihilating humanity from the world. So our Angels prevent that from happening, whilst allowing us to bring our relationship failure and all the rest of our fucked way of life to its full conclusion, the acme of the Rebellion and Default.

My Angels were explaining to me that once a rebellious humanity can't stand on its own two feet, and so survive through its natural human merits, it's over, it's fucked, it should cease to be. So the end point and conclusion of the evil Rebellion would come about eradicating itself, for there is no love or truth in Rebellion. So evil ends up destroying itself, it contains within itself right from the outset, the seeds of its

own destruction. And for us, it's only taken 200,000 years to come to fruition. So by rights, humanity reaching Peak Rebellion, should cease to be on Earth. However, that's now going to happen. So our Angels are propping us up. So a humanity that needs 100% Angel support to keep going, it being completely artificial and false, shows it simply can't go any further or deeper into its evilness. And apparently we're arriving at that point now on all fronts. And so because of that, The Change is required, to end the Rebellion and Default, setting humanity free of its self-imposed evil control, allowing New Humanity to come back to surviving on its own merits. As I imagine those people living in the Sanctuaries will do.

Now on a personal level, we're all to deal with that peak rebellion within ourselves. And our Healing, by submitting to the truth of how evil, unloving and self-rejecting we are, is in fact allowing ourselves to move up the Mansion Worlds effectively bringing all how rebellious and untrue we are to the fore. So we're actually allowing ourselves to be the full evilness that we are, that we started with at conception. So in the upper seventh World level, we're as evil as we can be, we're the truth of it, we know we are, we feel it right through ourselves. And so being as evil as we can be, then we can't go any further with it, we've reached our own Peak Evilness.

So for example Sam, by you working to accept all how untrue, unloving and wrong you are, BEING it, you're facing and being and allowing yourself to see the truth of how evil and rebellious you are. And that's all that you are, there isn't anymore, you can't then go deeper into becoming more evil and rebellious than you were at your conception. And this is the important part, that being as truly evil and rebellious, untrue and unloving as you are, you are actually annihilating yourself being this way, there is nothing else, so in effect you're terminating the Rebellion and Default in yourself. So does that make sense?

So that is the END of your Healing, as it's the end of your evilness.

I guess as an argument to counter this, you could say, well I have got to the truth of how evil I am, and okay, I can't get any worse, however what's stopping me remaining here at this end level forevermore, being the evil, unloving, rejecting and untrue shit that I am? But the fact is, we have to keep moving on, so you have to keep progressing in truth, you still have feelings, your soul is still expressing your personality in Creation, and you're still wanting to grow and advance in truth. So you have to 'DIE', you have to end the Rebellion, it and the Default has to DIE in you, because it can't keep going on and getting worse. And so we do DIE, and then we're Born Anew, as we leave the Rebellion and Default, moving into the Celestial levels of perfection, love and truth.

However, how does this DEATH, and transition and transformation go, I don't know.

So does that make any sense, can you see what I'm getting at?

So humanity as a collective whole, can't become more evil, it's fully expressing on all levels the complete evilness of the Evil Ones and Eve and Adam, so it has to end being Rebellious. And personally as people and spirits want to do their Healing, then they will bring their evilness to fruition by being the whole truth of it, and then it can't go any further, we can't go beyond our parents, we can't go beyond Eve and Adam's evilness, so it also has to end.

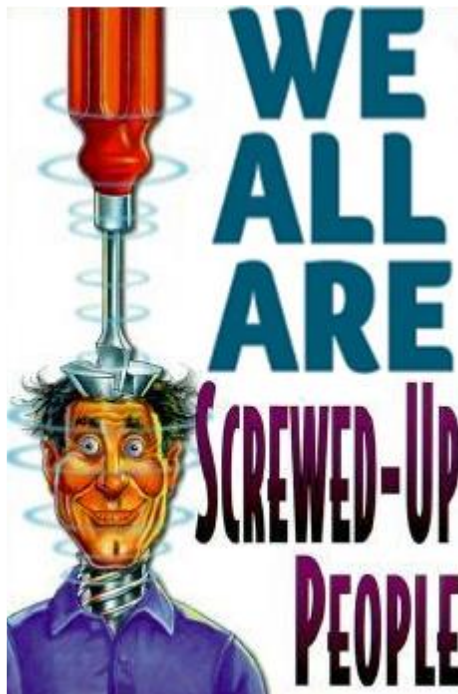
And by being as evil as we can be, I don't mean we will then go out and start killing everyone or doing all the bad things, it means we're owning up and fully honouring the desire and need to do that, if that's what's in us. It's all done on the Truth levels of acceptance, so we fully accept the truth of how rebellious and evil we are, and when we do, then we've in effect ended or 'killed' the Rebellion and Default within us.



REBELLION and DEFAULT formally ended 31 January 2018:

All in keeping with the **outworking of the Rebellion and Default**. Humanity is so shut off to anything that one's feelings provide, we are all but minds robotically carrying out instructions; nothing is fluid, intuitive nor feeling-free. Our whole world can't change as it is, because everyone and everything is so bogged down in the mire of artificial laws and procedures.

**WE'VE BEEN SCREWED BY
LUCIFER REBELLION**



SPIRIT BODY Brennan Model of the 7 Levels of the Human Energy Field



Freedom Is Truth

Before being conceived, we each have had nothing to do with the culture or heritage of the family and its people into which we are now born.

After we pass over into our spirit lives, we each will have little or nothing further to do with the culture or heritage of our family that we lived with on Earth.

We each are one of many voices within our communities.

We are to embrace our experiences and limitations of our family upbringing which our soul has desired for us to have. We are spirit personalities having a physical experience and this physical life here on Earth is the commencement of our incredible journey which will take us through many universes.

We are not to accept the limitations, the psychic barriers of our family, nor those of our national culture and its ethos. The people of a community, a region, a state, a nation respond to and reflect a common set of values, customs and culture, which is passed down through the generations, this is a psychic imposition or barrier that inhibits evolution, our true self expression and our growth in potential and personality.

Now, it is this time in history that, individually, we each are to free ourselves of the Rebellion and Default that has been imposed upon us by hidden controllers, both of those from within the spirit worlds and of their defacto agents here in the physical.

We now have the option to embrace and enjoy the freeing truths that our soul can and will expose to us – we are fully self-contained. We are to look within, to our feelings, and to long for, to ask for the truth that our feelings will exquisitely and amazingly reveal to each of us.

The wonders of intuitiveness and spontaneity are ours to behold, experience and enjoy – this is of our choosing. We can continue living a limiting mind-centric life or embrace living Feelings First – The New Way – with its infinite potential. The gateway is now open and the pathway is defined.

This we are to share with all of humanity as we are Freedom's voice.

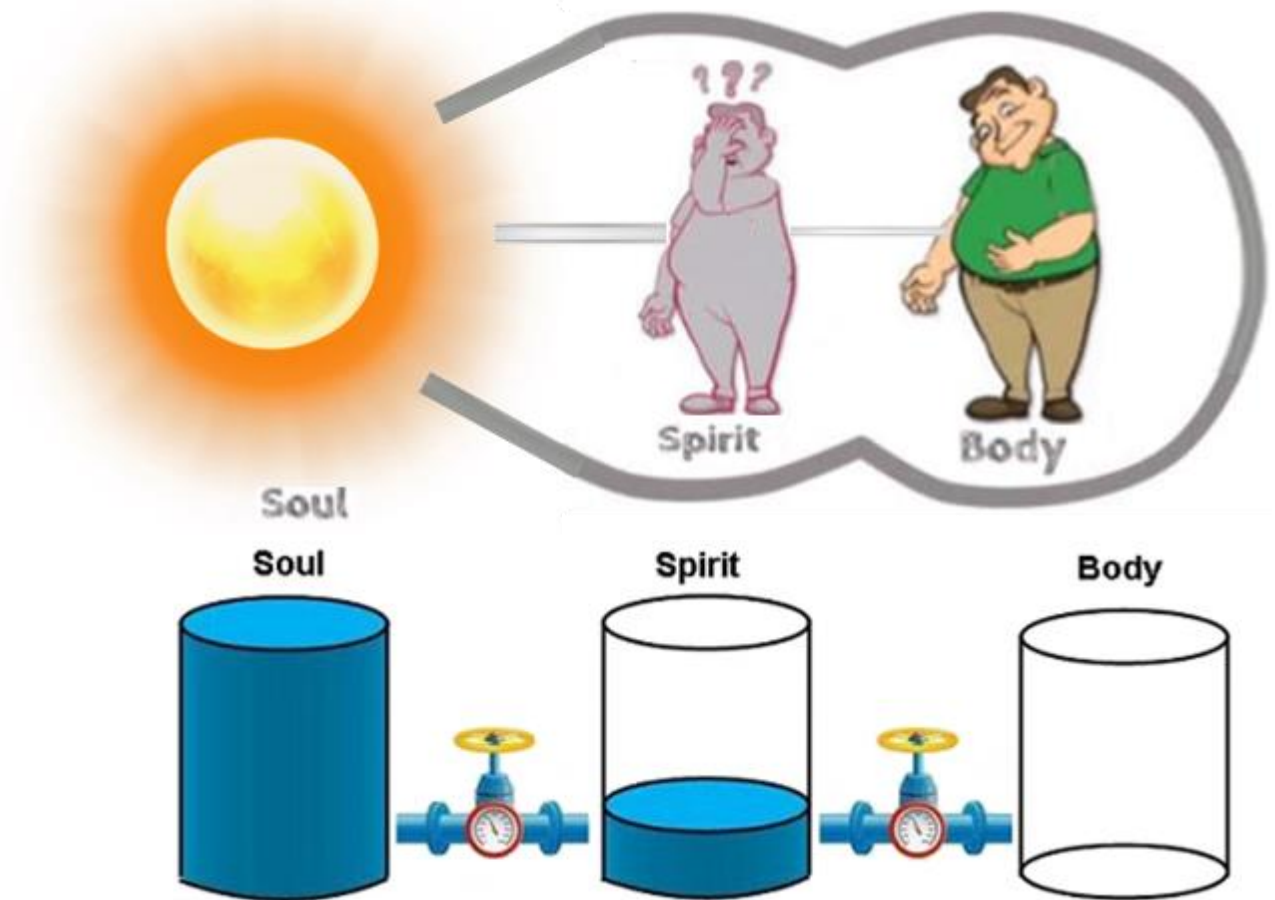
MoC 904

ONE SECOND TO MIDNIGHT

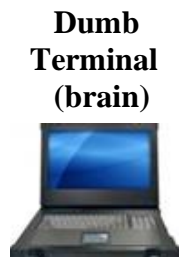


OUR MIND constricts OUR FEELINGS!

Thousands of years ago, high level spiritual leaders erroneously guided humanity to embrace their minds as the way to live. Our minds are addicted to untruth, they cannot discern truth from falsehood, and our minds are addicted to control over others and the environment. Our minds are also addicted to untruth! We are self-contained. It is our soul-based feelings that we are to allow to surface and guide us. Our minds are to then help us implement what our feelings are leading us to do and understand. All truth flows from our soul and it is our minds that are to allow such truths to be accepted and followed, not the way we are now being taught. We are to live Feelings First.



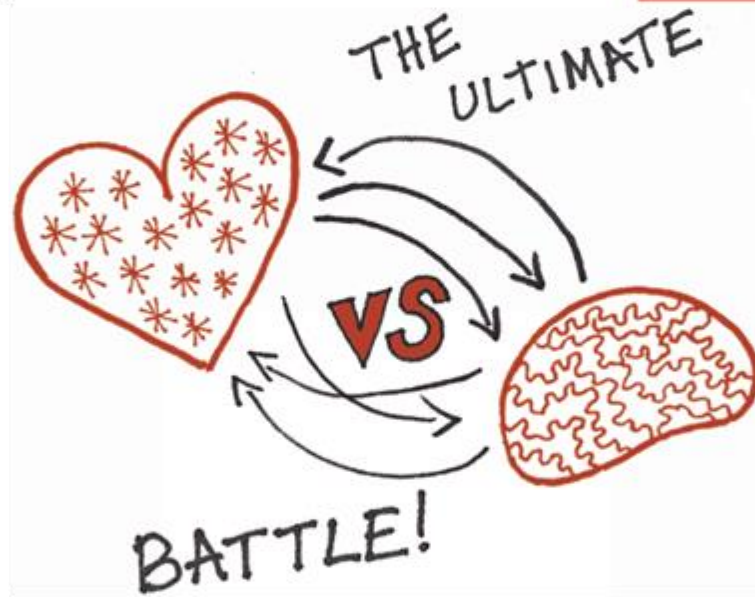
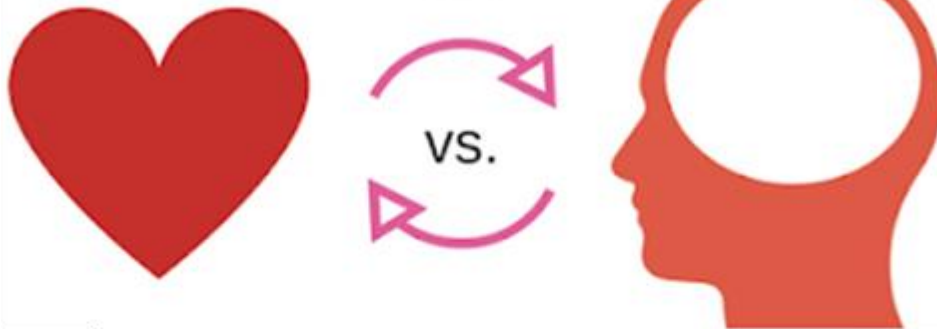
Spirit Body Physical Body
Personal Computer (mind) Body

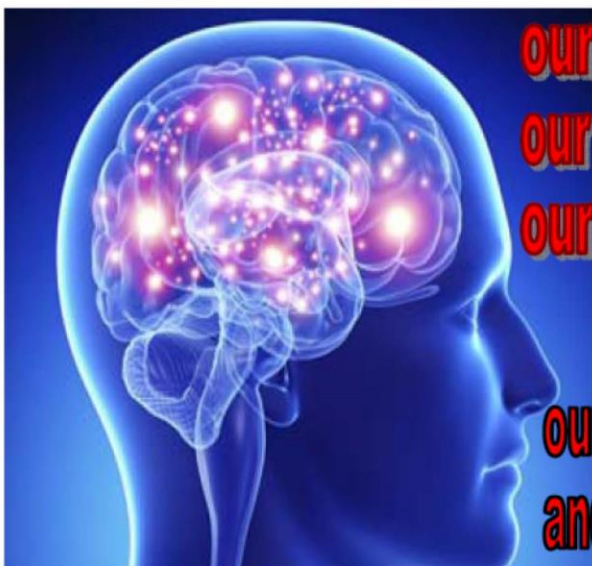


HEART & MIND

Finding the Truth

A false dichotomy of the
mind





**our MIND is a CONTROL ADDICT!
our MIND is addicted to UNTRUTH!
our MIND cannot discern TRUTH!**

**our MIND is within our SPIRIT BODY
and orchestrates our physical BRAIN.**

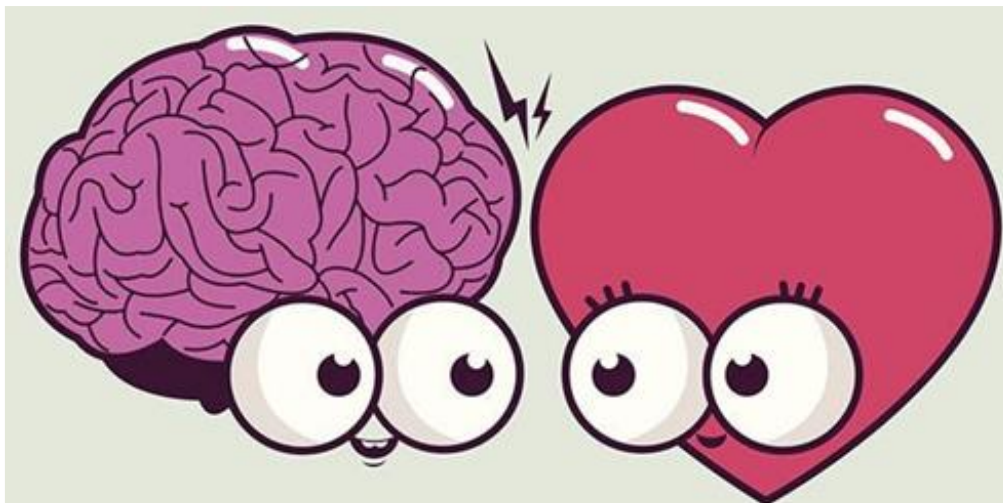
ASSUMPTIONS are the product of our MIND!

HEALING ends
MIND-CONTROL!



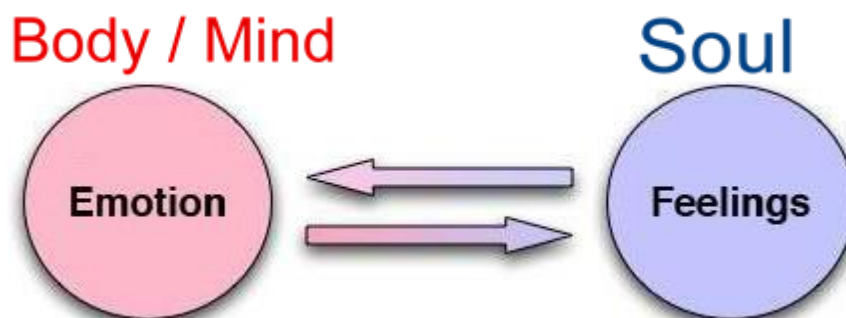
**our SOUL is our TRUTH!
our FEELINGS are our TRUTH!
FEELINGS FIRST, mind to follow!**

**all we need is WITHIN.
our MIND suppresses FEELINGS.**



Our mind strives to control and is always subject to error. The mind's controlling natures based on error are the foundation of all the misery, illness and drama on Earth for all of humanity. Put them aside by expressing them.

Our soul based feelings, given to us by our Heavenly Parents, are always in truth. Allowing our feelings to lead our way of living that is living true to God. Express all your feelings and long for the truth of them.



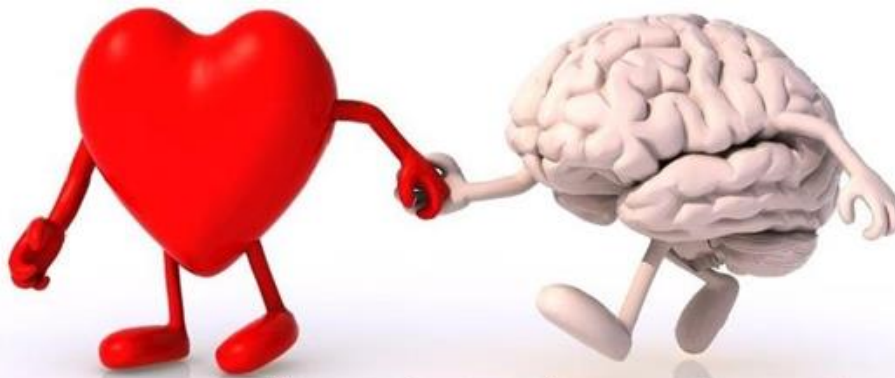
EMOTIONS are of the PAST and FEELINGS are of the PRESENT

The vital difference between emotion and feeling is that emotions have their roots in the past, and feelings relate to the present moment. *Emotions represent our feelings which were not previously expressed, and these accumulate with time.*

Mind based manipulated feelings are not your truth. Your mind based feelings are typically in error and are best to be expressed, talked out to a friend. Error riddled feelings and injuries settle within our physical body as dense, disturbing, negative energies.

Our soul based feelings are always in truth and are freeing – this is your Truth!

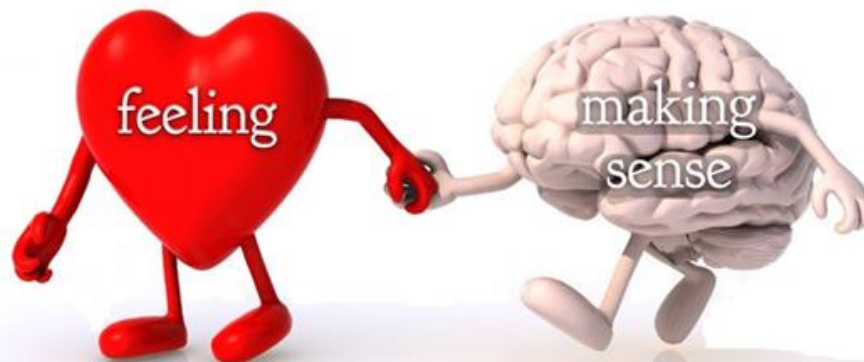
It is so good being as feeling-expressive as you can be, helping you in all aspects of your life and particularly in your relationships. If you want to know more about why you have these heart based / soulful feelings that you do, you can long for the truth of them.



Sometimes Your Mind Needs More Time
To Accept What The Heart Already Knows

Feelings first

Heart logic and mind logic are often
two very different things.



It has to feel right and make sense to
move forward with ease.

If it doesn't feel right, but it seems to
make sense, pause, and investigate within.

If it feels right but doesn't make total sense,
ask the mind to trust the heart a little more.

The heart's usually the wiser of the two.

~Doe Zantamata

HUMANITY and WHAT IT BELIEVES to be LOVE:

It's really that one's mind has been corrupted so your experience of love is not true. You can believe you feel love, but it's not true or pure love, because you are untrue. However having said that, the love one feels within their corrupted love state is still love as long as you feel it to be, and such feelings need to be accepted for what they are. But through your Healing, love feelings you've had might evaporate, even turn into hate feelings, so you then know the truth of that so-called love was untrue. But also some love feelings might stay, and so you know that some part of you was truer and not so badly corrupted.



And then to add to the confusion, within one's anti or not true love states, you can still experience the Divine Love, it being a separate thing to your Natural love. However, you have to wipe the slate clean before you can truly experience Divine or even Natural love. However we don't actually wipe it clean, that's where doing your Healing comes in, as it's a transition, even a transformation, out of the negative anti and unloving truth rejecting state, into one of positive love and truth accepting.

Helen via James 29 March 2017

WE ARE TO LIVE TRUE TO OUR FEELINGS:

Our soul based feelings are to be our way of life. As we embrace our feelings we are embracing the way of our Heavenly Parents. Our feelings come from our soul and our soul is a creation of our Heavenly Mother and Father. Our feelings are the will of God, they are all that we are to express. At all times expressing our feelings is at all times living the will of our Heavenly Parents.

When we incarnated, we embraced the will of our physical parents. This we did by absorbing their beliefs, dogmas, ways of life, errors and passions through our spirit body based mind. We have been turned against ourselves so we can't express our true and natural selves. And because we're imperfect, or wrong in that, then we are living against, not only ourselves and each other, but nature, God – the whole universe. And that's what's wrong, our mind is full of erroneous beliefs, and so many of our behaviours are unloving, and that's all what is sinful and evil. Living in such a way is a rebellion against the truth of ourselves; that being who we truly are. And that we can't get to know ourselves, or anyone else for that matter, truly, because we're doing all we can to deny so many aspects of ourselves, all of which can be seen through the denial of our feelings, and mostly our bad feelings. It is our mind that we use to shut out our loving and truth based feelings. Only by longing for the truth of our injured and error riddled beliefs and feelings can we express these unloving and error based ways and release them from our personality, our personality being formed by God.

Should we embrace the process of Feeling Healing whilst longing for our Heavenly Parents' Love, we are also creating the circumstances by which our future children will be free of the generational injuries and errors that have been passed down for eons and enable humanity to evolve in love and the will of our Mother and Father. This is what humanity is now to embrace.

ALWAYS BE TRUE TO YOUR FEELINGS

Imagine

- **Imagine the Revelations of how we are to heal and find our way home to our Heavenly Parents have now been given to us by high level spirits.**
- **Imagine the major errors and omissions within the New Testament of the Bible are addressed and revealed.**
- **Imagine Feeling Healing with Divine Love is the way of life and pathway to Paradise – to our Heavenly Mother and Father.**
- **Imagine by living true to ourselves, true to our feelings, we are living true to God. It's that simple.**
- **Imagine living by the Golden Rule: that one must always honour another's will as one honours one's own.**
- **Imagine women came to understand their True Liberation is through the Truth of their Feelings.**
- **Imagine that our Healing is through our longing to know the truth behind our feelings, both good and bad; and then express that to a friend!**
- **Imagine we each have two Nature Spirits, two Angels, two Spirit Guides, one Indwelling Spirit of God and the Spirits of Truth who are personally involved with us at all times.**
- **Imagine Feeling Healing (with Divine Love being Soul Healing) opening up the opportunity to personally interact with our very own Nature Spirits.**
- **Imagine Feeling Healing with Divine Love opening up the opportunity to interact with our very own Celestial spirit guides.**
- **Imagine parents understood they were to encourage their children themselves, never denying their child the freedom to express ALL of their feelings.**
- **Imagine if parents began to understand that we cause all the issues in our children through childhood suppression and repression.**
- **Imagine society understands parents cause a child's illness even in embryo.**
- **Imagine a society that began to engage in feeling healing and parents were bringing up children free of the imposts of their own injuries.**
- **Imagine if we were allowed to fully express our true personality.**
- **Imagine people communicating with each other again!**
- **Imagine humanity living Feelings First, embracing Feeling Healing.**
- **Imagine that humanity understood what the Rebellion and Default did to us!**
- **Imagine if all levels of control, that we are subjected to, recognised they are all doing the begging of the Evil Ones – Lucifer and his partners.**

- Imagine parents, education systems, religious institutions, employers and governments relinquished their controlling ways and dictates.
- Imagine the world's scientists whole heartedly began to live through their Feelings – break throughs would occur daily! (Imagine all the crap they would have to get rid of and admit to!)
- Imagine through engaging your soul based feelings that nothing is hidden!
- Imagine children being conceived to parents who are free from childhood suppression and repression.
- Imagine if students were able to determine what they actually wanted to learn.
- Imagine a health system that recognised the underlying cause of all illness is childhood suppression and repression.
- Imagine – believe it or not – Feeling Healing is a cost free health process!
- Imagine we can commence our Feeling Healing even while in junior school.
- Imagine bottom up democracy where no one is disenfranchised and people elect true professional representation and may directly frame and pass legislation.
- Imagine a judicial system that is free to engage in Feeling Healing in its deliberations of truth and remedies.
- Imagine that we begin to recognise and accept our true heritage is our Heavenly Mother and Father and is not our family line going back many generations – we are Their children!
- Imagine that the resources to conduct war were aligned for the benefit of all humanity and nature.
- Imagine if the Zionists were forced to surrender their financial claims or pay income tax like everyone else.
- Imagine this will be the commencement of rebuilding the global financial structures.
- Imagine that we recognise our true life partner is our soulmate / soul partner who is always of the opposite sex and we can only come to recognise our soulmate once we have fully Healed ourselves.
- Imagine that the Revelations and the ending of the Rebellion and Default are distributed through music, plays, television programs and full length movies as well as the print media in all languages to all of humanity.
- Imagine when all the aspects of the Change come into play that not one facet of our life will continue in the manner we have grown accustomed to!

While we are rebelling against our soul we are also rebelling against our Soul Partner! We cannot recognise our Soul Partner until we have healed ourselves of our Rebellion and Default.

Until then we will reject our Soul Partner!

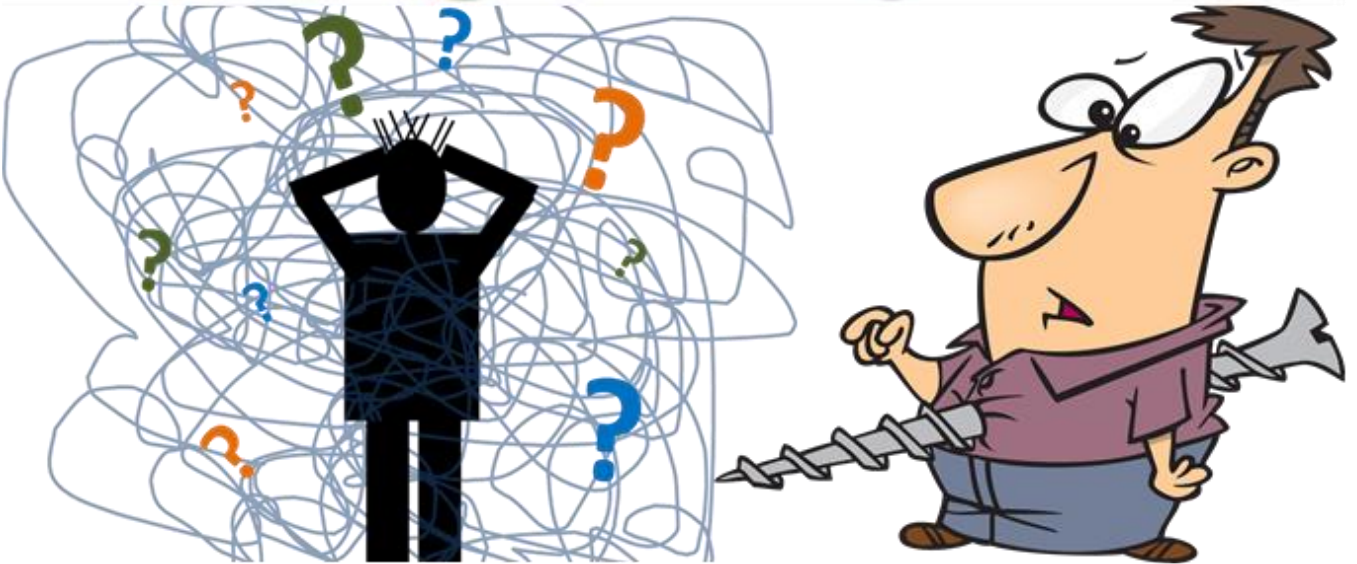


mind controlling way or soul's feelings first!

This time, in the history of humanity, is the most exciting time ever experienced.

Childhood Suppression is the underlying cause of all physical illness and social issues seen throughout society.

We are being screwed by our Minds!



We are Truth Seekers!



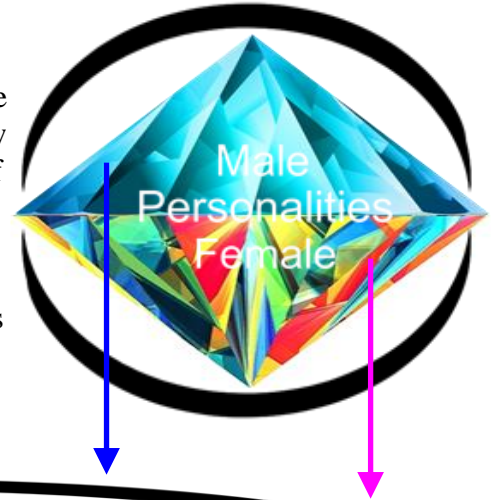
**Heart felt
feelings are the
Truth of our Soul**

Disney PIXAR
SOUL

Childhood Suppression

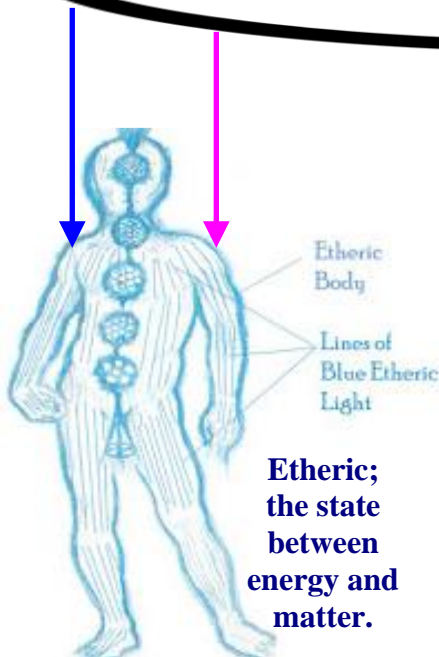


Childhood Suppression – from conception to age six years – harmfully encrusts the soul, thus impeding light flow throughout all seven layers of the spirit body, damaging the genes within the spirit body which in turn damages the genes in the physical body, as well as setting the pattern for all of our physical health issues throughout our lives.



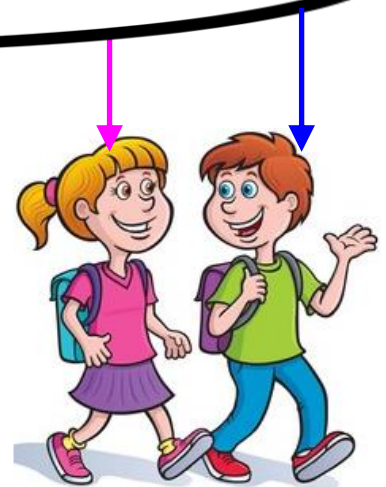
SPIRIT BODY

Brennan Model of the 7 Levels of the Human Energy Field



Etheric; the state between energy and matter.

The spirit etheric body is the template for our physical body, however, no health care system or science considers that the underlying cause of any health issues are formed through our Childhood Repression and that no physical healing occurs without expressing our childhood suppressions, being feelings both good and bad and then longing for the truth behind these injuries. Medicine may suppress the pain – it does not and cannot cure – vaccines are extreme physical suppressions!



The pain from ANY illness will not exceed the pain experienced during our Childhood Suppression!

ASSUMPTIONS *and the* MIND

Whenever a principle or platform of truth is formed around an assumption, then as further truth is revealed, the error may become obvious.

A great deal of custom and passed down practices have evolved through handwritten records which have been copied and re-copied and have then been injected with assumptions that have become the core belief and customs by which people have lived by for many generations.



These platforms need to be revisited and addressed. We will find that these mind derived assumptions have a 98% error rate. We will further find that the mind's propensity to have control of others has distorted matters and that all systems worldwide are in need of rebuilding.

Education, health, science, commerce, legal, governmental and all platforms have evolved through the mind and are all taking us further away from our feelings, our soul-based feelings of truth and are suppressing our true personalities. There is not a man-made system on Earth that is presently founded on truth, the truth that we all long for.

Meanwhile, hidden controllers have seized the moment and have achieved global domination, hoarding massive wealth to the detriment of humanity. Only will it be through a change in the way of living will this and other power bases crumble. We may disturb hidden controllers but if we do not change our way of living they will reassemble their controlling power!

It will only be through the New Feelings Way emerging as a way of living, that education, health services, science, commerce, legal, governmental and all other platforms will be appropriately restructured.

The revelations of Living Feelings First, Feeling Healing and the New Feelings Way have been provided to all of humanity, from the highest authority, to enable each and every one of us to consider the options and possibilities. Our freewill continues to remain sacrosanct.

This revealing has been in the planning and preparation for thousands of years. It was two thousand years ago when the foundations for the arrival of these possibilities and revelations took place when on 31 May 1914 the first writings commenced through James Padgett in what is known as the Padgett Messages. The primary auxiliary writing is The Urantia Book (1925-1935).

The major and most important writings are those of James Moncrief commencing in 2002. This is the focus of the publications that are to be made available in numerous formats and in all of the important languages so that every community, worldwide, will have access and potentially become aware of the teachings and revelations.

Suppression of feelings being the core cause!

Suppression & Repression = Universal Depression

I Think ...



We frequently find ourselves in a conversation that starts with “I think ...” and we automatically cringe not understanding why we do so.

“I think ...” is our addiction to being controlled by our minds and of suppressing our feelings, our soul based feelings that are always in truth and it is our feelings that we are to embrace and have our minds to follow in support, not how it is for all of us presently.

“I think ...” is innately telling us that what we are about to listen to is what that person’s control and error addicted mind is going to impose upon us and that the conversation will be a pointless endeavour to shift that person to some level of truth and away from control of others.



“I think ...” is the imposition of an assumption or multiple assumptions in keeping each of us submitted to the repression that has been imposed upon us throughout our childhood forming years. This is all about our capitulation to the Rebellion and Default. We can all recall our parents frequently asking us what do we think! The question is to be **“What do you FEEL?”** When you ask that question of a person, their response is instantaneous and it is their soul’s truth emerging – not our mind’s 98% in error assumptions that are tiresome and debilitating to say the least.

~~“I think...”~~

Following our healing and then ascension through our local universe of Nebadon, before leaving Nebadon we return our mind to the Divine Minister and embrace the mind of the Infinite Daughter, the God of Mind. The mind of the Infinite Daughter enables us to progress to Paradise, the home of our Heavenly Mother and Father. The Eternal Son is the God of Truth. The Divine Minister is of the mind whereas Mary and Jesus are of the truth for our local universe of Nebadon.

When we embrace how to use our minds in the appropriate manner, then we will find our minds being wonderful. Our lives are all about experiences and what arises from our feelings about each experience. This is all in preparation for when we achieve our ultimate status as a Finaliter which occurs when we arrive in Paradise. Then we will be well prepared for the ongoing assignments throughout the outer universes now forming.

IT'S ALL ABOUT
Experiences
&
feelings

What do you FEEL?

Assumption + I Think ...



**98% of assumptions are in error, the other 2% are flukes.
The best investigation reveals a 96% error rate only!**

It is not generally understood that our minds are addicted to untruth. Once we recognise this then much becomes obvious.

No wonder we may cringe when someone starts a conversation with "I think ..."



Judge: Son, what were you thinking?

Son: Well Judge, that was the problem.

I was thinking just like mum and dad taught me, but now I know my mind cannot discern truth from untruth, is addicted to untruth and control over others! Our mind is not our moral compass.

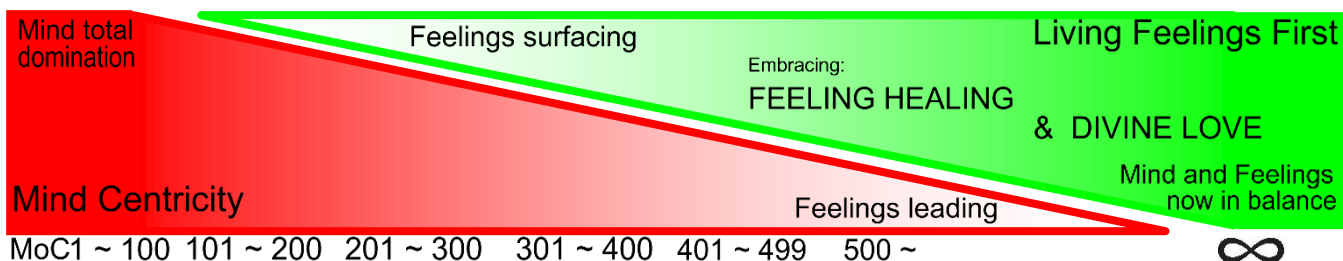
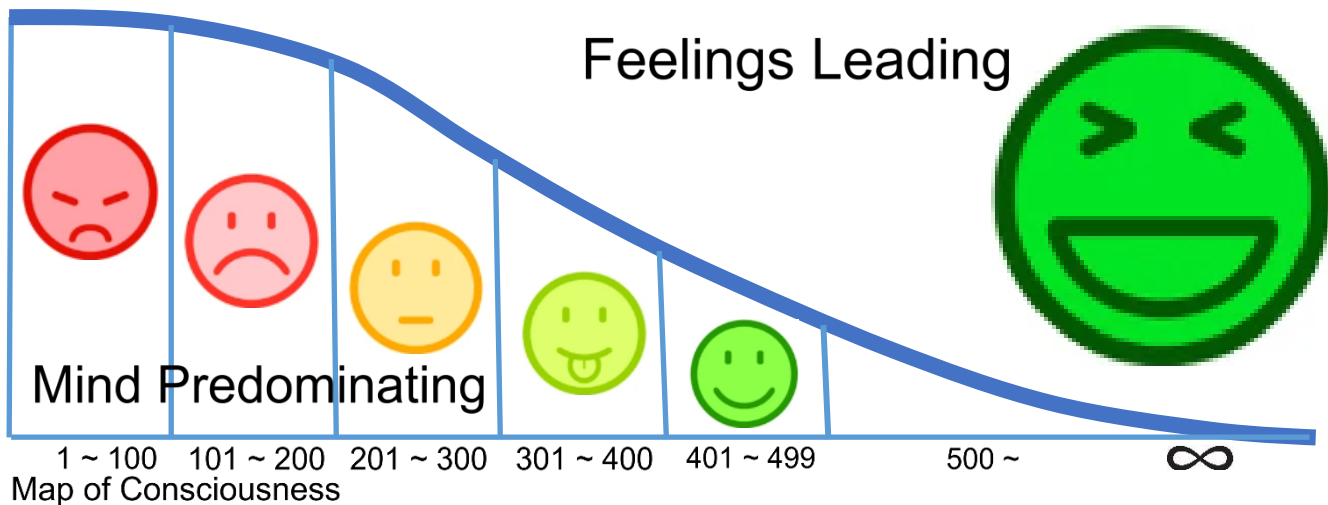
Our moral compass is our feelings!

MORAL COMPASS

Our 'gut feelings' are our soul promptings of truth and love!



Living Mind-Centric versus Living Feelings First



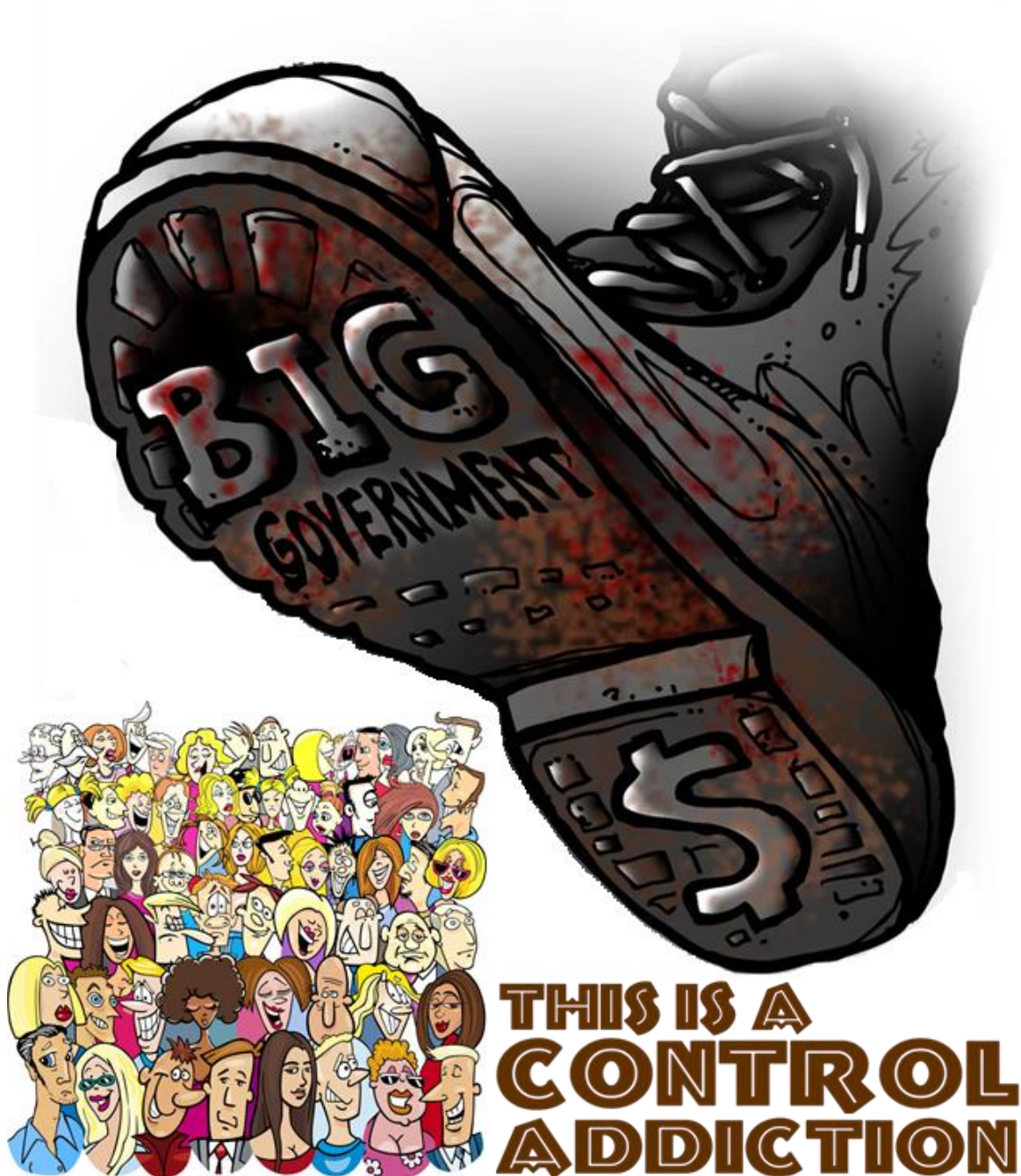
People through their minds, though living with fear (calibrating under 200) typically present a persona that is welcoming, smiling, laughing and at the same time lack a reasonable or clear moral compass. Psychopaths typically calibrate under 80 on the Map of Consciousness (MoC). These are people who can convince themselves that they are justified in killing a person simply because they were standing in a doorway that they wanted to walk through! We are outraged when we here of police stations being blown up, when a classroom of school students are shot, when a church or mosque congregation is massacred, when a shopping centre is attacked, when school girls are kidnapped en masse, and much more.

Yet no one asks why are they capable of such crimes? No one asks in what environment were they brought up within? No one asks how did their parents treat them? No one asks what did their parents teach them? How did their parents teach them how to live? No one investigates their childhood suppression. No one brings the parents into the equation of a child’s delinquency.

All by the grace of God do go I – we have all been misguided to live mind-centric which is embracing an addiction to untruth as our minds cannot discern truth from falsehood, our minds are also addicted to control over others and the environment. We are all in danger of making such gross errors. A child when conceived is at the highest level of consciousness in natural love on Dr David R Hawkins’ Map of Consciousness, near to 1,000. By the time the child is aged six years, it will then be calibrating at a similar level to one of its parents, should the parents not be similar in calibration.

Profiling of the parents way of parenting needs to be routine when investigating health and social issues. The inclusion of feelings and living feelings first in all levels of education is a pre-requisite. As all religions are agents of mind-centricity then that needs to be understood. Thus, to bring about the ending of the generational transfer of entrapment into mind-centricity and its limitations and detriments, this needs to be a holistic embrace by and of all facets of society and by all institutionalised systems, nothing is to remain the same.

We are not to impose our will upon another!



**Our MIND is a CONTROL ADDICT!
Our MIND is ADDICTED to UNTRUTH!
Our MIND cannot DISCERN TRUTH!**

ASSUMPTIONS are the product of the MIND!

**Our SOUL is OUR TRUTH!
Our FEELINGS are our TRUTH!
FEELINGS FIRST, mind to FOLLOW!**



MIND IN CONTROL

This is how it is!



FEELINGS FRIED

Great U-Turn

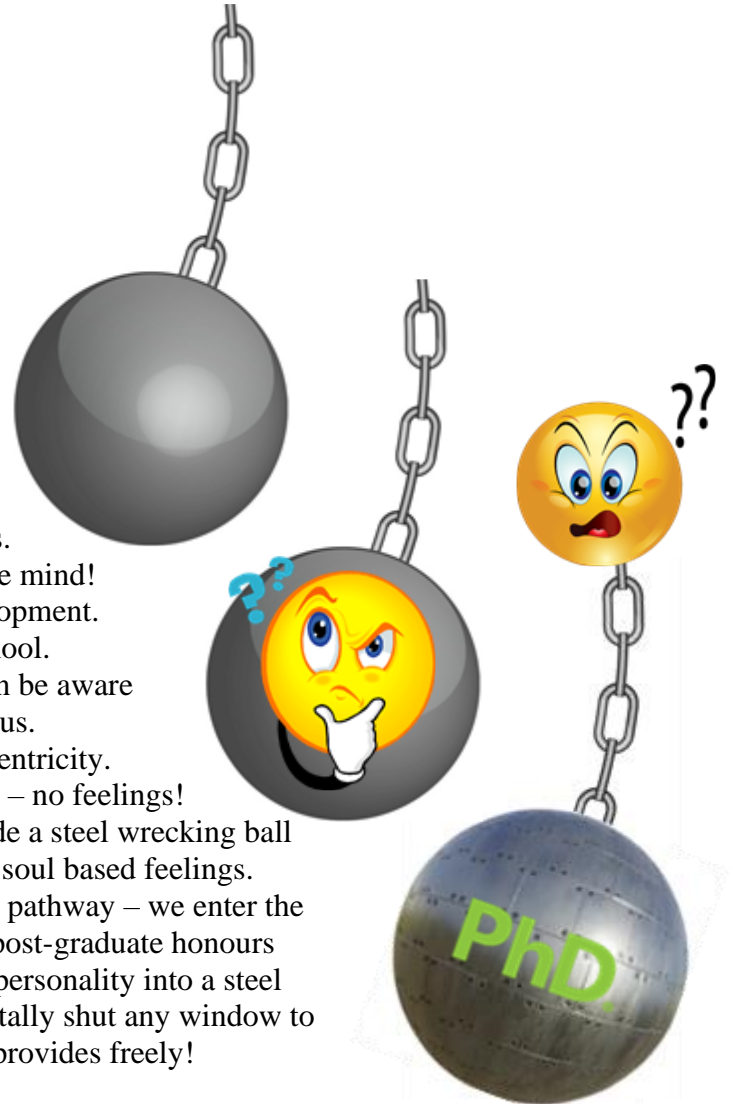
Feelings
in Control

This is how it is to be!

Mind in Support



WE ERRONEOUSLY EMBRACE OUR MIND TO LEAD US THROUGH LIFE!



Our parents teach us to live through our minds.
 We are taught to be mind-centric – worship the mind!
 We go to school and it is all about mind development.
 There is no consideration about feelings at school.
 Our religious institutions do not appear to even be aware
 of our feelings, nor how they are important to us.
 If we go into employment then it is all mind-centricity.
 Higher education is further mind development – no feelings!
 We have now totally immersed ourselves inside a steel wrecking ball
 with no comprehension or appreciation of our soul based feelings.
 Then we take the ultimate mind imprisonment pathway – we enter the
 pinnacle of the education system – we gain a post-graduate honours
 degree – PhD – we have now imprisoned our personality into a steel
 wrecking ball with an outer layer of steel to totally shut any window to
 our soul based feelings and the truth our soul provides freely!

Living mind-centric locks us into a stagnate state that has a ceiling of 499 on Dr David R Hawkins' Map of Consciousness. While we ignore and suppress our feelings, we cannot evolve past this glass ceiling of MoC 499, being 'Reason'. Fixed in a stupor, a life of zombiism that we see all around us!

Having considered the headline comment by the Prime Minister of Australia on 30 December 2002, "Anthony Albanese is 'encouraging' people to think with 'their feelings'", it is clear that not even the head of a progressive country has any comprehension of the root cause of what ails all of society. The road to aspiring to live Feelings First and then embracing one's personal Feeling Healing will be a long one due to the comprehensive corruption of truth that engulfs every society throughout even nation on Earth.

WE have SUCCUMBED to our MINDS and IMPRISONED OURSELVES:

Once humanity collectively understands what has happened to them on the higher spiritual level, how the people have been controlled, and that it's over, that control is no longer controlling, it's just legacies of it, all of which the average person can deal with by destroying it in themselves, things will change markedly for the better. And as the people change, so too will how they want to live, it will be a great time of revolution, nothing will be the same. So what you are currently living through is the end of the Rebellion and Default, it literally is, and so once the end is fulfilled and the New starts, then all how it currently is and has been will cease to be.



Nanna Beth 3rd Celestial Heaven, John's grandmother 20 March 2018

Without looking to our feelings and wanting to uncover the WHOLE truth of them, we can't heal our errors of belief and injuries. It's as simple as that despite what anyone does with their emotions and feelings. And many people in their endeavours to heal themselves have done some real Healing, if they at any time looked to their feelings for their truth, and this truth would have been forthcoming. So humanity has gained a little truth over the years. However, because of the feeling-denying forces of the Rebellion and Default that have been in play for some 200,000 years, the level of truth has remained very low.

The New Way, living Feelings First – Feeling Healing – which is now being revealed, will have many people wanting to follow it, looking to their own feelings for their own true power and freedom. As a consequence, they will no longer want to be dictated to by bogus religions or politician's corrupt social and educational systems or deep state hidden controllers or mind spirits or anyone else.

Our FEELINGS are our SUPREME GUIDES:



Feelings are what guide us through our ascension of truth. So they are really our Supreme Guides. Many people look for a person, spirit, angel, even God, for supreme guidance, however it's all right there already built in – in our feelings. **We just have to submit to them, allowing them to take us where they will, expressing all the parts we want to express, letting the emotion drive that expression if it's there to be expressed, or just talking about all we feel and how feeling that feeling is making us feel – or, how we feel about having that feeling, all whilst longing for the truth of our feelings. Longing for the truth of our feelings is really: Longing for the truth of our self, because: we are our feelings. So life stirs up our feelings, we feel being alive; or, being alive means we are feeling, always feeling; and when we work out what and why we are feeling what we are, so then we know the truth of how we are. And over time the truth accumulates, and our mind expands our understanding of ourselves, all being driven from our feelings.**

Kevin, John's brother-in-law, 26 September 2017

Kevin died 10 August 2012, through Feeling Healing became Celestial on 7 August 2017

Root Cause

Highly esteemed Lanonandek spirits from within our local universe of Nebadon were assigned as System Sovereigns of our local system to oversee Earth's humanity and their spiritual development. 200,000 years ago they, the Lucifers, became infatuated with their authority and turned against the regents of Nebadon, Mary and Jesus, as well as rejecting God. Through their Planetary Princes, also Lanonandek spirits, they had taken the humanities of 37 worlds within their local system into their Rebellion.

Through living through our minds, suppressing our feelings, we on Earth will continue to be at war with each other, illnesses of all descriptions will continue from our feelings suppression, famine and inequalities prevail, control of others is the core of all systems, we cannot determine truth from falsehood and life on Earth is a living hell. We have been continually seduced by mind Mansion World spirits and we live life in a stupor – nothing more than zombies doing the begging of the evil ones, the rebellious Lanonandek spirits.

Through living through our minds, suppressing our soul based feelings, we have been progressively going further and further away from our Heavenly Parents, now to the point that we cannot go any further. Through working cracks in the Universal Contract governing the Rebellion and Default, this control has been ended formally as of 31 January 2018.

Pathway Forward

To liberate one's real self, one's will, driven by one's soul, moves one to embrace Feeling Healing, so as to clear emotional injuries and errors. With the Divine Love, then one is also Soul Healing. We are to feel our feelings, identify what they are, accept and fully acknowledge that we're feeling them, express them fully, all whilst longing for the truth they are to show us.

God's Divine Love: Pray for it, ask for it, and receive it.

The Golden rule is: Never interfere with another's will.

Golden Rule: that one must always honour another's will as one honours one's own.

New Feelings Way: learning how to live true to ourselves by living true to our feelings.

We are to express our feelings, both good and bad, at all times, and to long for the truth of them.

By living true to ourselves true to our feelings, we are living true to God. It's that simple.

Natural Love Flow

Natural love is Creation's love;

One can swap back and forwards between paths

I am God

Intellectual

Self reliant (trust myself)

Self-determination way of life

Mind dominates

Thinking = Mechanistic

rational

analysis

reductionist

linear

Values = Mechanistic

expansion

competition

quantity

domination

Adult like

Control

Millions of paths (man created)

Peak possibility is 6th sphere

time to complete path:

100 years to over 1,000 years

Feelings First with Divine Love Flow

Divine Love is Soul's love.

I am God's son/daughter/child

Emotional

God reliant (God relationship)

Soul-spirit living harmony

Soul dominates

Thinking = Holistic

intuitive

synthesis

integrative

non-linear

Values = Holistic

conservation

co-operation

quality

partnership

Child like

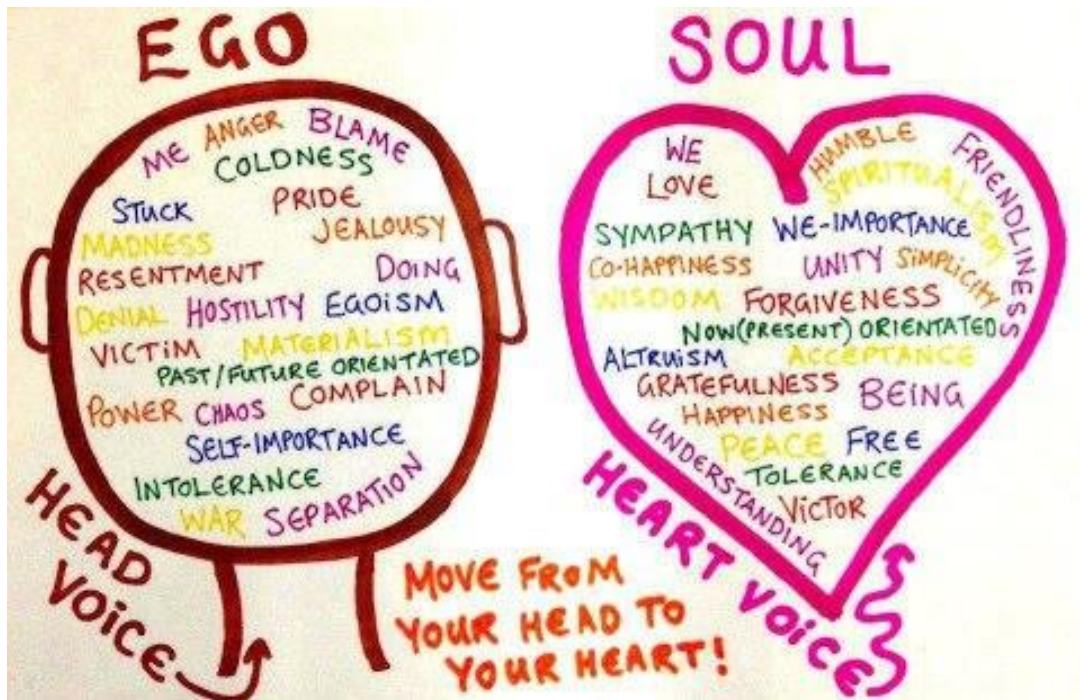
Feeling

Defined path (God created)

Peak possibility is infinity

(sphere / mansion world are same)

5 years to over 10 years to at-onement



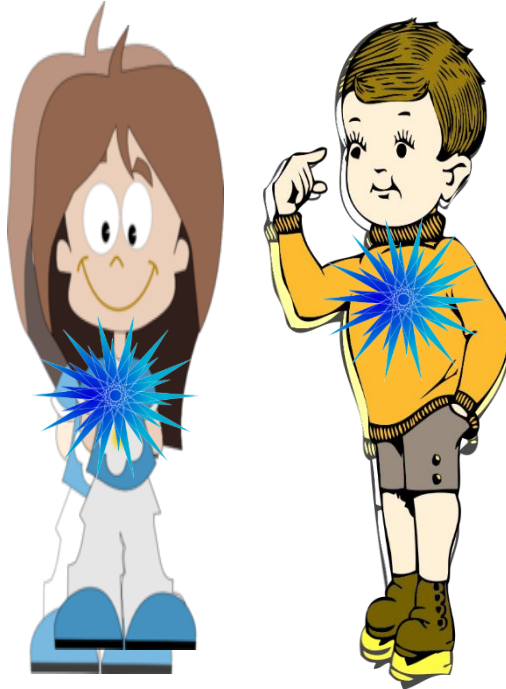
Soul Partners

SOUL – Soul Partners:

The Real You is your soul, you are one ‘half’ of that soul.

Each half of the original soul incarnates a spirit and physical body simultaneously, they being connected. The soul expresses each of its two personalities as a woman and man. True soulmates are always of the opposite sex.

Sexuality is an attribute of the two personalities the soul expresses; the soul itself does not know sexuality.



The soul connects to the two spirit bodies it has created by ‘golden cords’ of light; and the spirit body is in turn connected to the physical body by ‘silver cords’ of light.

The spirit body is your astral body. The etheric is really the body that is the template for the physical and one that doesn’t hold consciousness.

The soul remains invisible to the spirit and physical bodies, only being discernible by its luminosity through the spirit body.

95%+ of humanity currently are within the 1st sphere of development (499 MoC Ceiling).

PERSONALITY



PERSONALITY

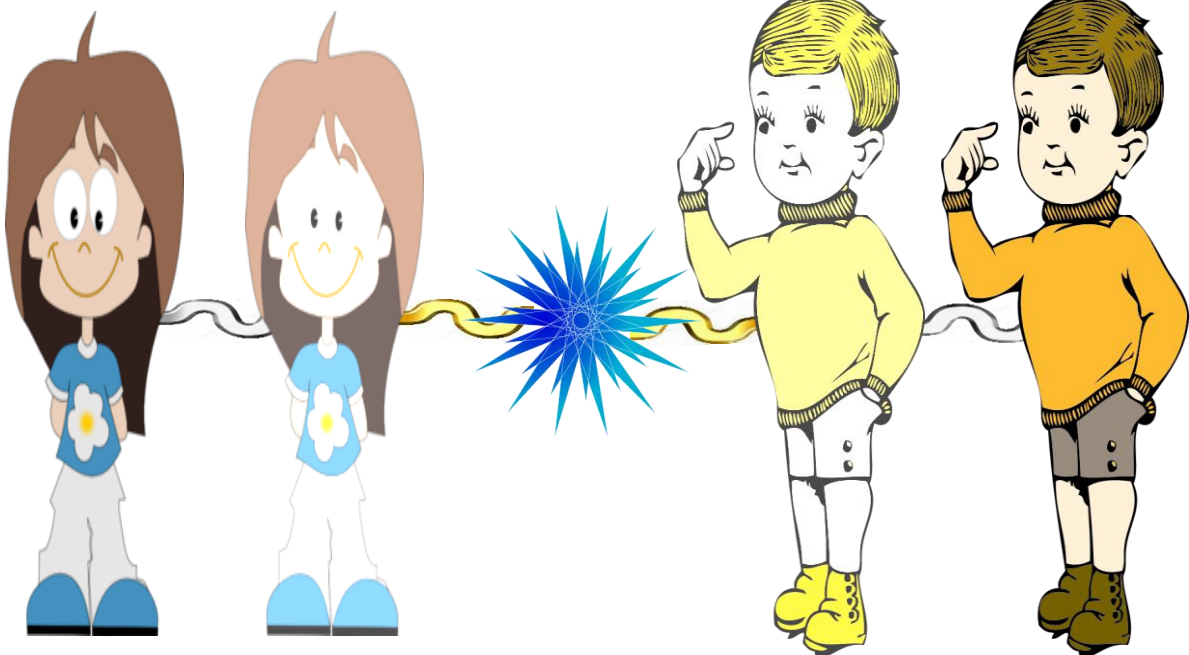
Physical Body

Spirit Body

Soul

Spirit Body

Physical Body



Beliefs suppress TRUTH

Dis-ease is of Disharmony with TRUTH

Mental Illness is of CHILDHOOD SUPPRESSION

Perceived level of truth MoC 1,000

FEELING HEALING

embraces the healing of both

Disharmony with TRUTH

and

CHILDHOOD SUPPRESSION

and with Divine Love we are embracing

our

SOUL HEALING

Perceived overall level of truth MoC 920 – relative truth potential MoC 1,480

VOICE

We each are to VOICE our pain - the pain from within!

And our pain is our Childhood Suppression.

This being our families' traditions and customs of unknowing erroneous ways.

It is the untruth of held spiritual platforms.

It is our own imprisonment within our mind of arrogance and control addiction.

It is the imposition of control placed on us by those from many levels of influence!

We each are to VOICE our pain to a companion who has compassion for us, and long for truth!

We are to discover that truth which is freedom and love has been hidden from us.

We are to discover that our feelings are our truth.

We are to discover that we are each fully self-contained - truth is within us - and that it is our soul based feelings that generations have told us to suppress and ignore.

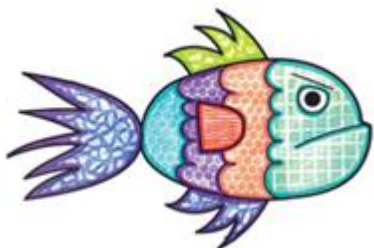
No more controlling institutionalised systems are required! - NONE!

VOICE

LONG to KNOW ABOUT what you are FEELING!
Long to understand the truth behind
what your feelings are pressing upon you.



Ask to know the truth about that which you feel.
It is knowing the truth of that
which you feel that sets you free!



Always be true to your feelings
because they are your truth
and truth is love and our way home!



Express your feelings to those who matter to you.
Suppressed feelings bring about pain and illness.
Talk it out to a friend!

*From our head to our toes,
what our feelings say goes!*



Feelings, good and bad, are to be expressed.

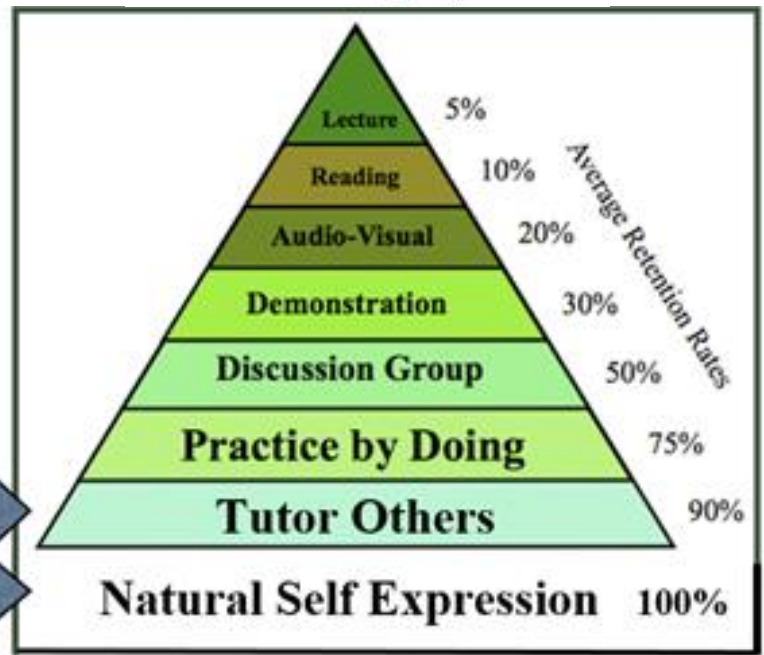


Talk it Out!



Heartfelt feelings are our truth.

The Learning Pyramid



WHAT ENTERS EMOTIONALLY IS TO BE EXPRESSED EMOTIONALLY WHILE LONGING FOR THE TRUTH TO BE KNOWN ABOUT WHAT IS BEING FELT!

It's all about
Experiences
&
FEELINGS



BE FEELINGS EXPRESSIVE!



**Great Gifts through our Feelings are:
The Awareness of our Heavenly Mother
and Father**

**That our soul is a duplex – both male
and female – one soul, two personalities**

**That Feeling Healing with Divine Love
is our pathway to Paradise – our true
home**

**Freely expressing our Feelings to a
companion is expressing our true
personality – the personality bestowed
upon us by our Heavenly Mother and
Father – our true Mum and Dad!**

**These are truths of living
Feelings First Spirituality,
The New Way**

Seven Spirit Earth Planes

We start our eternal existence by incarnating, even if it's just for a moment, onto a physical world like Earth. Then, when we die, we move into one of the seven Mansion Worlds, which can be likened to probationary worlds; worlds in spirit through which we correct all that's wrong within us. This includes if we've hurt other people or creatures very badly, we need to compensate for such suffering we've caused in others by suffering ourselves in one of the two lower Earth planes commonly called The Hells.

Other than the two lower Earth planes, we mortal spirits can't live in the other five Earth planes, they being reserved for the angels, nature spirits and other higher spirits.

The geography of the seven Earth planes is based on, or the same as, Earth. Whereas the geography of the seven Mansion Worlds is unique to each world. So, on Earth it's conceivable that your physical home could also be used by nature spirits, angels and higher spirits for their needs in the higher Earth planes, as well as being used by spirits confined to the two lower Earth plane – Hells. So, with these seven other dimensions all focused on your home – a lot could be going on! However, more than likely, the reality is that the lower two Earth plane hells have spirits congregating in the darker seedier places of the physical world, or in the prisons and more isolated places if they are to spend time in isolation. Whilst the nature spirits, angels and higher spirits would reside in their higher Earth planes mostly away from dense populations of humanity, so more in the remote unpopulated areas of the world. The planes, although each being separate from each other and the physical Earth and not interfering or influencing each other, still have some bleed-through of energy, thus affecting them in certain ways. As you can imagine, I don't think the angels would set up one of their main meeting and administration centres over one of Earth's most densely populated, corrupt and polluted cities. Not unless the higher angelic light, was in some way, to affect those people on Earth.

And by and large, we on Earth have very little consciously to do with any of the spirits or angels in the Earth planes. Some people feel emotionally, mentally, psychically and even at times physically disturbed or influenced by spirits in the two Earth plane, Hells, although really there is little direct interference from them. Such things as scary ghosts and knocking noises and all the dark scary poltergeist stuff comes from these wayward, lost, 'dark' and evil spirits still trying to have nefarious control over people on Earth, all of which is relatively harmless other than in exceptional cases. And mostly, we on Earth are totally unaware of our attending nature spirits and angels, and even more so of any higher spirits that might be visiting us or Earth.

For spirits and angels to get as physically close to us as they can, is by them being in the relevant Earth plane. During a Divine Love meditation or prayer for example, it's conceivable you might have in attendance and unbeknownst to you – dark spirits of the two Earth planes that want to try and redeem themselves so are brought to attend your prayer or meditation. You might have nature spirits there as well. You will have your attending angelic pair together with other angels and you might have other higher spirits who are required to help you in your thoughts or feelings to progress in your spiritual development. And then you might also have other Mansion World or Celestial spirits attending you in the relevant Earth plane, including even from the Hell planes should the spirits want to get as physically close to you as they physically can. A lot of Mansion World spirits descend into the lower two Earth planes, the Hell planes, so as to be close to their loved ones on Earth. They are able to do so without being affected negatively by the ever-present Hell plane spirits by adjusting their spiritual light in order to keep them at bay.



It should be noted that to qualify for life in the Hell planes comes about because of the state of 'hell' that already exists within the person who acts out such hell on others. We only cause harm to others because

the harm was caused to us through our childhood. And instead of dealing with and honouring our own pain and taking full responsibility for it, we block it within ourselves thereby taking it out on others by making them suffer the same degree of pain we're suffering. Those people who harm another person or creature will at some point suffer the degree of pain they have caused in the other person when the Law of Compensation acts upon them during their time in the Hells. They have to 'balance the books' so as to help them understand that it was wrong to do what they did to the other person or creature, for them to understand by directly feeling the pain they have caused. And once they have felt it all, 'paid for their spiritual crime' against the will of another, then they are allowed to resume regular spirit life in the Mansion Worlds rather than being kept separate in the Earth Hell planes. And somehow, during the time of 'paying the price', they are healed of their need to hurt and harm others so they can move into the regular spirit Mansion World population, no longer looking to, or with the need to, hurt and cause suffering in other spirits.

And it is highly possible that at some point, and even possibly quite soon, the same Laws of Compensation that apply to those spirits having to live and 'do their time of suffering paying for their crime against another', will be applied to and on Earth. So many bad people will suddenly be forced into the 'hell of their own making, the hell that resides in them'. Which means doing some or all of their 'Hell Time' whilst on Earth, then completing it when they get to spirit by having to enter one of the two Hell Earth planes, or no longer needing to spend any time in them if they've 'served their time for their evil crime' when on Earth. Should the 'earthing' of the Law of Compensation come about, thereby bringing the Earth into direct alignment with the First Mansion World, then as you can imagine, things will drastically change here on Earth. With anyone merely having the intent, let alone actually carrying out the sinful act, having to immediately suffer compensation for their unloving action and motivation. With the compensation being lived by feeling such intense guilt and all the other bad feelings for the bad things you have done, coupled with pain so bad and so ongoing, you enter into a state of perpetual begging for forgiveness and to be released from your suffering – that very same suffering you caused another person or creature to suffer.



Seven Spirit Earth Planes

Each of the seven Earth spirit planes co-exist in the same space as we do in the physical. We of the physical world are of the coarsest and densest material. Starting with the 1st plane, the material within each plane becomes finer, more refined and of greater luminosity. Those within the lower planes cannot see or discern the presence of those in higher planes. Those of the higher planes can move about those in lower planes without them being aware of being present unless they wish to reveal themselves.

Each plane is predominantly for one group of spirit or angel personalities. However, there are sectors within planes where visitors from higher planes can move about freely. No harm or disturbance can be caused by any spirit personality upon another, not even those within the physical Earth existence.

7
6
5
4
3
2
1

7th Earth Plane being for visitors from Havona and Paradise, together with the Daughters and Sons of God. This includes Angels who have come all the way from Paradise.

6th Earth Plane being for visitors from the higher levels of our Local Universe. Higher Daughters and Sons together with higher Angels.

5th Earth Plane being for visitors from the Celestial Heavens and higher angels and spirits from other parts of Creation, including Finaliters.

4th Earth Plane being exclusively for Angels, some of which have evolved from Nature Spirits!

3rd Earth Plane is the exclusive domain of Nature Spirits who are derived from creature life experience on Earth.

2nd Earth Plane – a ‘Sphere of Isolation’ from which one progresses having settled the Law of Compensation, allowing entry into regular spirit life in the 1st spirit Mansion World.

1st Earth Plane – the darkest ‘Sphere of Isolation’ and closest to Earth. A plane allowing spirits to live in their state of hell because of their grievous inclination to cause harm to others.



SPIRITUAL HEALING:

Our Healing is about first finding the truth of our unloving and untrue state, coming to understand the full extent of that, how it relates to us and how we relate to it, and all how it makes us feel so demented living life in a stupor.

Healing is about seven Mansion Worlds worth of uncovering the truth of our rebellious state. It's all about becoming progressively more aware of how screwed up we are. So right the way through our Healing, we stay being screwed up all so we can see the truth of how demented we are in all the ways that we are untrue, all the way to the End of our Healing.

What we do heal through our Healing, is all that is stopping us see the truth of ourselves – our untrue and false state.

Mansion World 7: is then about still working with the deepest and residual bad feelings, whilst looking to sort out how you wrongly relate to yourself and others, nature and God because of being unloving; understanding how your relationships are unloving, how you don't connect properly, how unloving you really are and why and fully accepting the truth of it, coming completely to grips with your parents not loving you as you needed to be loved – sorting it all out, including your self and feeling expression difficulties. Then comes transition.

Mansion World 5: is then about going right into the depths of them, feeling how unloved you feel and seeing how unloving you are and how that makes you feel, bringing out the majority of your pain, your misery, fear, anger, guilt, hatred, boredom, terror, rejection, nothingness, feeling powerless, alone and abandoned, and so on. Each progression is full on, all the way.

Mansion World 3: is for waking up to the truth that you're not loving and starting to get in touch with your pain, starting to accept your bad feelings, starting to work with them instead of rejecting them.



IT IS NOT THIS WAY



IT IS THIS WAY

The PHENOMENON of VISIBILITY:



Firstly, animals do not have a spirit life. Should we need to interact with a deceased pet animal, then a particular class of angel will present as your pet. The life force of all of nature pools their life experience to subsequently become Nature Spirits who evolve to being angels.

Each higher progression of a human mortal consequently becomes invisible to those remaining at the lower level, as it is with angels, though those of the lower level remain visible to the progressing ascending mortal.

In reverse, those spirit personalities descending from Paradise, the home of our Heavenly Mother and Father, need to detune themselves so as to become visible to those in our local universe of Nebadon.

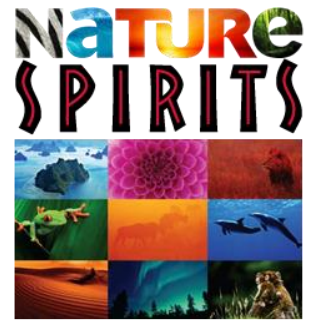
Those on Earth and throughout the seven earth planes have the same visibility progression. Earth, being the densest, is visible to all. But each plane, starting at 1, becomes progressively finer, with each plane above the last invisible to the lower. The same applies throughout the 7 spirit Mansion Worlds that we progress through to enter the first of the Celestial Heavens.

Higher levels can always make themselves visible should they wish to. Spirits and ascending mortals of lower levels may not be aware of higher levels until they evolve and progress.



NATURE SPIRITS

Nothing of nature reincarnates! And neither do we! Reincarnation is a false belief. Zero, zilch! Not even a blade of grass, a leaf from a tree, bacteria or plankton, or ourselves, has a subsequent physical life experience. However, except for humanity, the life force of all of what forms nature, after its sole physical experience, returns to a pool from which Nature Spirits emerge. All of nature is mind orientated. Nothing of nature has a soul, except for humanity which is truth and feelings orientated.

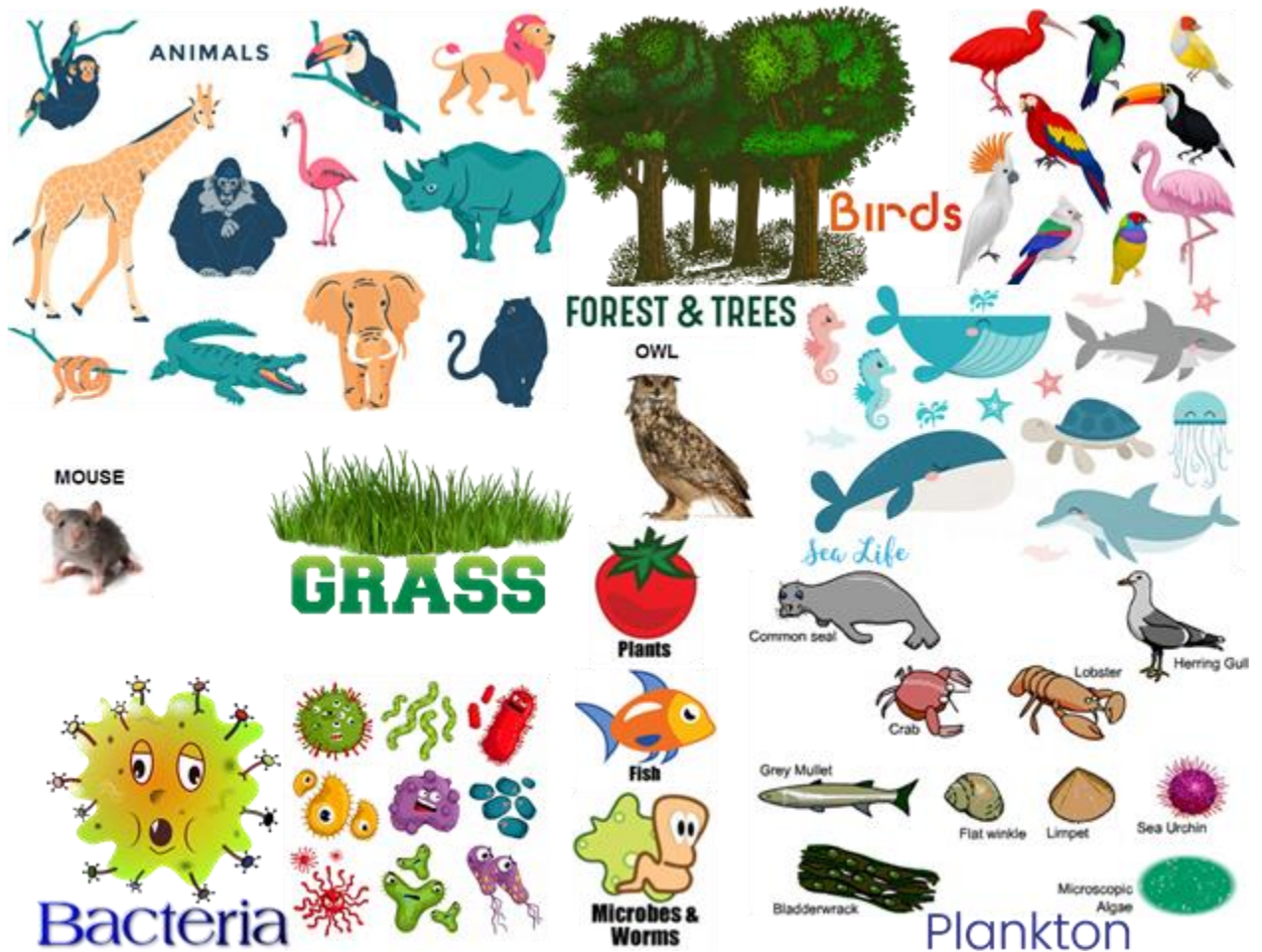


Meet Verna, a Nature Spirit, also known as ‘Lady of the Lake’: “Your spirit is your own unique spirit expressing the light of your soul; our spirits, also uniquely our own, however come from a composite of many other spirits. And in my case for example, and I’m about average, or ‘usual’ – as much as I hate to admit it – I’m composed, for want of a better word, of about five hundred billion creature spirits. So yes, you could say we’re complex on that level. And yet on other levels, we’re considered rather basic, we are after all *only* nature spirits, not great angels.”



“With Verna – a nature spirit” by James Moncrief

As the Rebellion and Default is now technically ending, those who embrace Feeling Healing and Divine Love will open themselves to communication with their Nature Spirit pair. For 200,000 years of the Rebellion, humanity of Earth has been closed to interaction with Nature Spirits. Humanity is truth seeking personalities who are to live through their feelings whereas nature is mind orientated and are to evolve their minds. A Nature Spirit’s next phase of evolution is that of being an angel which then will have many further evolutionary progressions upwards. Angels also step down from Paradise.



WE EACH have a Nature Spirit pair, Spirit Guide pair and an Angelic Pair:

For those doing their Healing or are interested in doing it, will from that time have their own personal angels, spirit guides and nature spirits with them, with whom they are to develop their own relationships should they want to. It is not about ‘sharing’ the same angels or guides or nature spirits, it is about you relating specifically to your ‘own’ ones because they are provided for YOU. It’s all for you, to maximise the experiences we each need.

We are all to have our own pure relationships. And it’s the same, of course, in life with your friends. However over there, in spirit, dealing with Nature Spirits, Spirit Guides and Angels, it’s more personal and private and ‘JUST FOR YOU’. So, we have our own separate, unique relationships.



For example, Nature Spirit Verna has been assigned to be specifically and only with James, and she ain’t going to be assigned to anyone else, so she won’t be sharing herself around.

This is SO IMPORTANT to understand; so that in future there won’t be all these people claiming to be speaking with Verna or Mary Magdalene or Jesus or Nanna Beth or anyone else who is part of it all in such capacity. Mary M and Jesus have spoken with James as they have, making it quite clear he is the only one they are speaking with.

We each have a band of a Nature Spirit pair, Spirit Guide pair, and an Angelic pair, each pair being in their ‘soulmate’ relationship. Even though we are ascending mortals having a soulmate, even our soulmate has his or her own group of six personalities assisting him or her. Our assigned Nature Spirits do not continue with us into spirit, our Spirit Guides may for a time assist upon entry to the spirit Mansion Worlds. However, our personal Angelic pair continues with us to Paradise, and then even possibly being with us throughout eternity.



Feelings! first



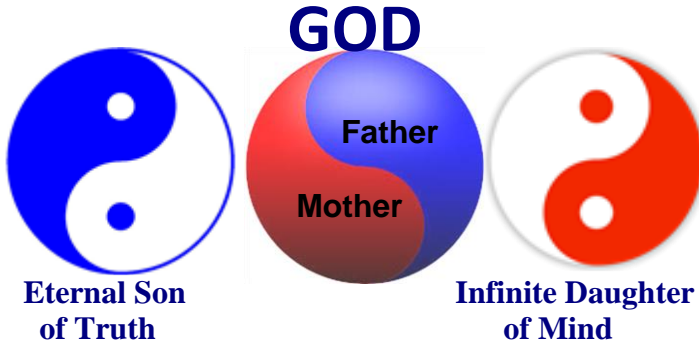
In a way, each person's Indwelling Spirit, which is really God, is contracting out the work needed to be done with you to other agencies. So to us spirits, the angels, the nature spirits, other elements under the Divine Minister's control, and even other non-humanity spirits, all of which end up doing increasingly more amounts of what your Indwelling Spirit does. And this 'outsourcing' is to affect greater personality interaction, increasing your experiences so they are maximised through interaction with different personalities rather than just relying solely on God. Overall, we are to become increasingly at-one with God, but we are to do that by becoming increasingly immersed in the experience of being with others.

Nanna Beth – 3rd Celestial Heaven: 25 December 2018



We each have a band of a Nature Spirit pair, Spirit Guide pair, and an Angelic pair, each pair being in their 'soulmate / soul partner' relationship. In addition we have our personal Indwelling Spirit.

CREATION of SOUL and SPIRIT:



God is *The Paradise Trinity* — the eternal Deity union of the Personalities: the Universal Mother and Father; the Eternal Son of Truth; and the Infinite Daughter Spirit of Mind.

The soul of each human personality (sons and daughters of truth) is existential, driving our personality expression in the experiential. The soul of each human finds truth by embracing one’s feelings and longing for the truth of them. We are to attain the Eternal Son of Truth. We are a creation of Truth.



The soul of angels is experiential, evolving through their experience by continually progressing in mind development. Angels are to attain the Infinite Daughter (Spirit) of Mind. Angels are a creation of Mind. Our soul is duplex (we have a soulmate / soul partner) and is created by our Heavenly Parents. Through our Feeling Healing we perfect ourselves, enabling the union with our soulmate, as we progress in truth up through the Mansion Worlds, celestial heavens and all the way to Paradise.

Feeling Pathway

Mind Pathway



Soul Partners

Angel

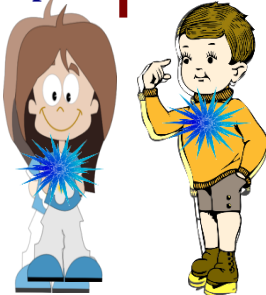
The soul of angels is also duplex, yet of the mind, and they progress in mind evolution to Paradise. Animals, plants and nature spirits are also creations of Mind.



Neither we nor animals reincarnate. We never die; upon death, we move into the spirit Mansion Worlds on our journey to Paradise. When animals and plants die, be they the tiny microbe to the mighty elephants of the land and the whales of the ocean, their spirit energy returns to the Spirit Collective Energy. And from this energy are drawn other animals and the nature spirits, who then in turn move onto becoming angels through increasing mind experience.

Spirit Person

Nature Spirit



A nature spirit is an angel in waiting.



↑ Earth

CREATOR
daughter and son

Avonal **Pair**

SPIRITUAL LEADERSHIP

SPIRITS OF TRUTH

LOCAL UNIVERSE
NEBADON

HUMANITY
OF
PLANET EARTH

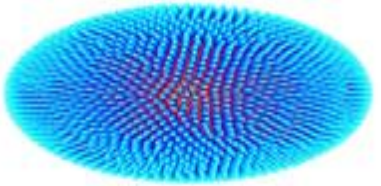
Both the Creator and Avonal pairs are bestowals from Paradise and have Spirits of Truth which are released following the death of their physical bodies. The Creator pair is the co-regent of our local universe of Nebadon. They have set the pathway for the Avonal pair to show the way for Earth's humanity to heal itself of the Rebellion and Default. The Avonal pair's focus is one humanity, of Earth, whereas the Creator pair is for all of Nebadon.





Three Layers of Progression Federal, State and Local

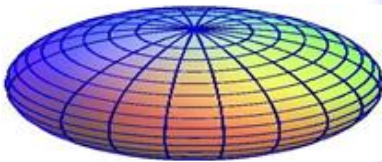
**Paradise
Havona**



PARADISE
 Heavenly Mother and Father }
 Infinite Daughter or Mind } Trinity
 Eternal Son of Truth }

 Creator Daughter and Son
 Avonal Daughter and Son
 Trinity Teacher pairs

Within each of 7
Super Universes
there are 1,000
local universes.



LOCAL UNIVERSE of NEDADON
 Co-regents Mary & Jesus – Creator
 Daughter and Son (federal oversight of
 3,840,101 humanities)
 Melchizedek order – oversight advisers
 Lanonandek order – system sovereigns
 Lanonandek order – planetary princes
 Adamites order (Adam and Eve)
 There are many orders and classes of
 spirits as well as angels.

Nebadon has 100
constellations, each
with 100 local
systems, which
each have 1,000
inhabitable worlds.

LOCAL SYSTEM SATANIA contains EARTH
 Creator D&S removed system sovereign
 (Lucifer) 26 CE – federal administration.
 Avonal D&S removed planetary prince
 (Caligastia) 1993 CE – state administration.
 Melchizedek plan to end Rebellion and
 Default now executing.
 Earth's Celestial Spirits now guiding Earth's
 humanity out of Rebellion and Default.



Earth's humanity is
now guided by
Celestial Spirits.

Paradise



Eternal Son of Truth



GOD

Father



Infinite Daughter of Mind

Creator Daughter & Son

Avonal Daughter & Son

Trinity Teacher Pairs

Creators and Avonals have Spirits of Truth which they may release.

These three classes of spirits descend from Paradise on assignments and leadership.

Nebadon

Creator

Daughter & Son

BRILLIANT
Evening Stars

MELCHIZEDEK

Divine Minister



Avonal

Daughter & Son

ARCHANGELS

celestial SPIRITS

Creator Daughter & Son

are co-regents of Local Universe (3,840,101 humanities).

Avonal Daughter & Son

lead a single humanity out of Rebellion (Earth).

Trinity Teacher Pairs

assist in teaching a humanity through their evolution / healing.

There are other classes of spirits. It was the Lanonandek spirits that brought about 37 humanities entering Rebellion with Earth also Defaulting through the Adamic assignment partial failure. The Rebellion being only within the System of Satania of which Earth is one of the 37. The Rebellion formally ended on 31 January 2018.

Earth

Spirit Guides

Formally ended
31 January 2018

and now for the

HUMANITY

Nature Spirits

ANGELS

REBELLION & DEFAULT

Past
200,000 years

GREAT -Turn

Coming
1,000 years

EXPERIENCES, FEELINGS and TRUTH:

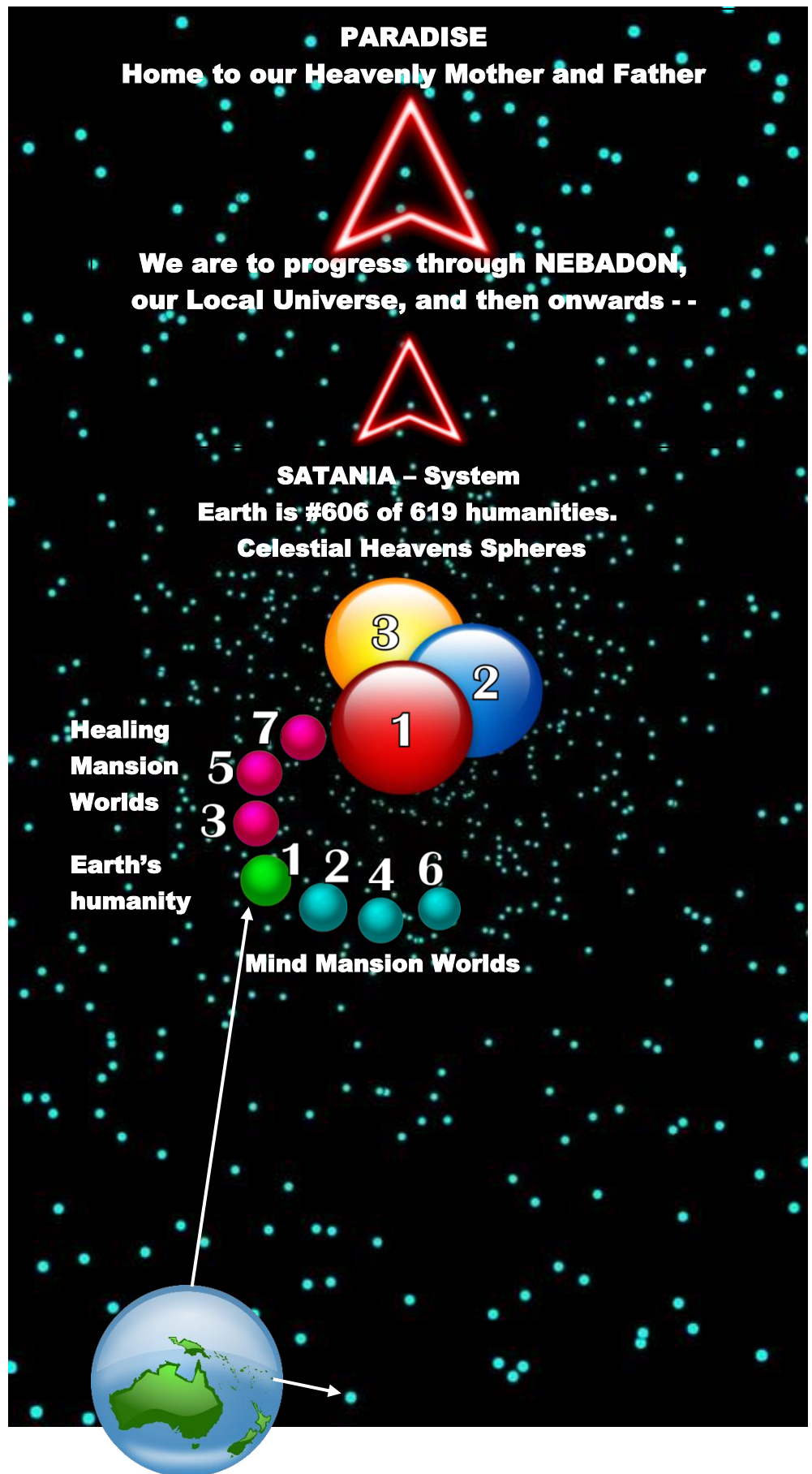
We look into the night sky and see around 1,000 stars that possibly are the hosts to the 619 humanities of our local system, Satania. Earth is on the outskirts of Satania.

When we ‘die’, and shed our physical body as we are spirits having a physical experience, we all arrive on the 1st spirit Mansion World.

If we continue to live through our minds, then we may progress to worlds 2, 4 then 6 and no further – dead end!

Should we embrace Feeling Healing with Divine Love, we will start our journey of Truth and Love, progressing through Healing Mansion Worlds 3, 5 and 7, then through the Celestial Heavens and onwards out through our Local Universe of Nebadon and on to Paradise, the home of our Heavenly Parents.

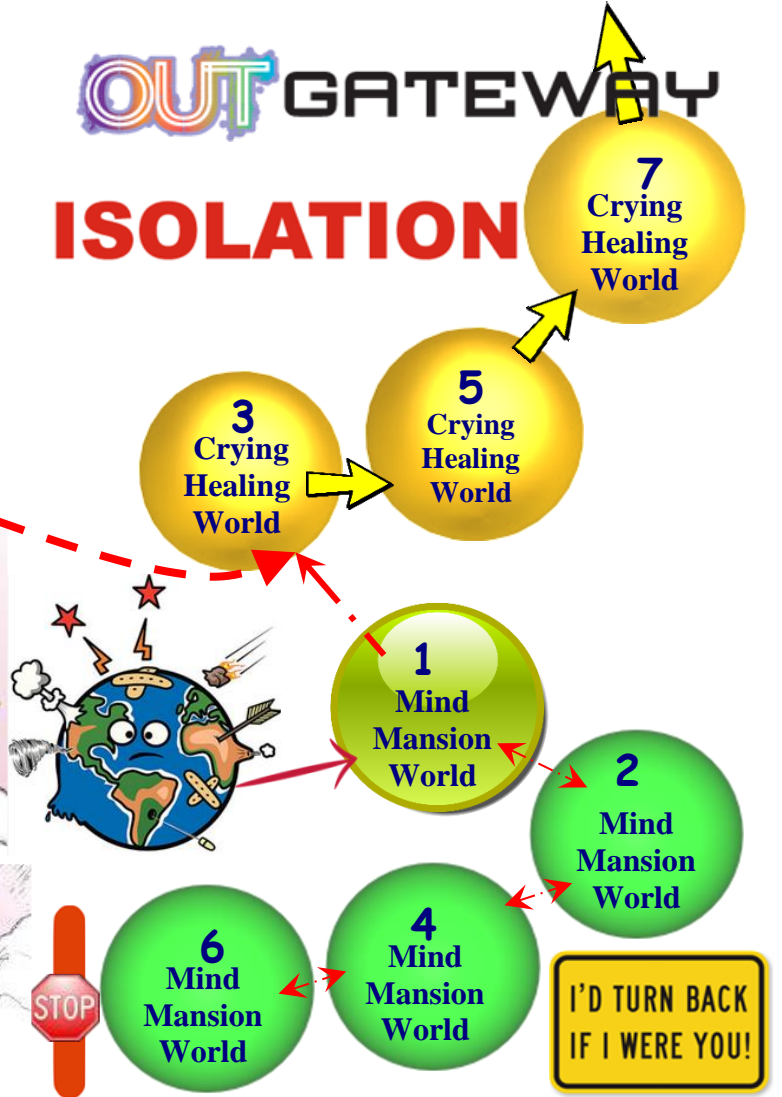
The spirit worlds are within a different dimension to the physical stars and earths. However picturing the spirit worlds within the centre of our local system is only a visualisation aid and not necessarily accurate.



Our Spirit Friends on duty



OUT GATEWAY ISOLATION



Spiritual growth on Earth evolves connectivity! Spirit connectivity is relevant to level of truth. Greatest Event in the History of Humanity!

- 1993: The arrest of the Caligastia and Daligastia soulmate / soul partner pairs, being rebellious Lanonandek spirits – Earth’s planetary prince and deputy.
- 22 March 2017: Negative mind-spirit influence was blocked by Celestial spirit.
- 31 March 2017: Angel assisted healing will become available upon the Avonal pair completing their own Feeling Healing, being with Divine Love, thus it being Soul Healing.
- 22 May 2017: Law of Compensation quickening.
- 2 December 2017: Psychic Barriers maintaining the Rebellion and Default were cracked.
- 8 December 2017: Bring on the money to ‘**house the future of humanity**’.
- 31 January 2018: Earth and the seven associated Mansion Worlds (including the two Earth planes) are **officially** now fully under the control of Celestial spirits. This marks a tangible and real end to the Rebellion and Default.
- 12 April 2022: Feeling Healing completed.

Three people on Earth are of high 7th Mansion World condition - this is what has unfolded:

As of November 2020, due to three people on Earth progressing through their personal spiritual healing and progressing into the equivalent of the 7th spirit Mansion World, have enabled the above events and milestones. Two high level spirits have led the way. These two personalities have needed to incarnate into the physical and unaided have had to find the way to heal themselves of the imposts of the Rebellion and Default which they voluntarily took on. This is the most exciting time in the history of Earth’s humanity.

When they move into Celestial Heaven soul condition while living on Earth then:

Upon becoming of a Celestial soul condition, then these two personalities will have Celestial soul level truth and will be able to directly convey such truth in person. Having then done so, Celestial Heaven spirit personalities will be able to follow and directly communicate with personalities in the physical on Earth in a similar manner. Presently, Celestials can only prompt people and not converse.

The level that the two high level spirit personalities progress to while living in the physical will set the ceiling for those on Earth in what they can grow in truth and love to. We can only follow.

Further, the conditions that prevail throughout the 1st spirit Mansion World may progressively be earthed. In the Mansion Worlds, the operation of the Law of Compensation is instantly imposed through the vigilance of Angels. This is likely to be imposed on physical Earth from the coming 1,000 years.

For Humanity to go through a spiritual upliftment, such as now, high level spirits must lead the way!

The Rebellion and Default was imposed upon Earth’s humanity by high spirits from within our Local Universe of Nabadon. To end the Rebellion and Default, higher level spirits, being an Avonal pair from Paradise have had to lead the way out of the Rebellion and Default. This they are now doing!

Journey of Earth's Humanity

Years ago:

993,500 **Andon and Fonta - aspire for human perfection.**

950,000 **Andonites reach Tasmania - southern Australia.**

500,000 *Caligastia - Lanonandek - appointed Planetary Prince
Daligastia manifests on Earth with staff
Sangik Family - Northern India - 6 colours*

200,000 *Lucifer - Lanonandek - rebels against Jesus & Mary
Caligastia draws Earth into Rebellion*

38,000 **Adam and Eve manifest on Earth
Adam and Eve default their mission**

1980 BCE **MACHIVENTA MELCHIZEDEK MANIFESTS
Commences end of Rebellion & Default**

7 BCE **Jesus of Nazareth born**

2 BCE **Mary of Magdalene born
Creator Daughter & Son Bestowal**

1914 - 1923 **Padgett Messages - second coming**

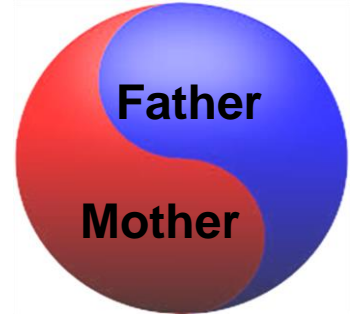
1925 - 1935 **The Urantia Book - history of humanity**

1944 CE **Bretton Woods Conference - funding**

2002 - 2022 **James Moncrief - Revelations
Avonal Daughter & Son Bestowal
Avonal Age of 1,000 years begins!**

MUM & DAD THIS WAY

GOD



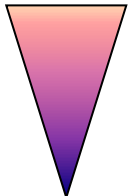
HEAVENLY PARENTS



JESUS & MARY



AVONALS



SPHERES of PARADISE being the home of our Heavenly Parents, Mother and Father, within the centre of the 7 super universes.



Unknown number of spheres to progress through to reach Paradise.



Ascending out of NEBADON is beyond the regency of the Creator Daughter and Son, Mary and Jesus.



INFINITE & UNIVERSAL SPHERES, unknown number to progress through within Nebadon.



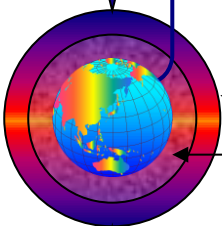
ETERNAL SPHERES 3 spheres unnumbered. Involvement with Earth finishes.



CELESTIAL HEAVENS are spheres 8, 9, 10.



Divine Love Spirit Healing Mansion Worlds are 3, 5, 7. We are healing our soul!



We all arrive in spirit into Mansion World 1.

Earth Planes 1 and 2 are of Disharmony – Hells.

Mind Spirit Mansion Worlds 2, 4, 6 are all taking us in the wrong direction and into a dead end!



AVONAL PAIR



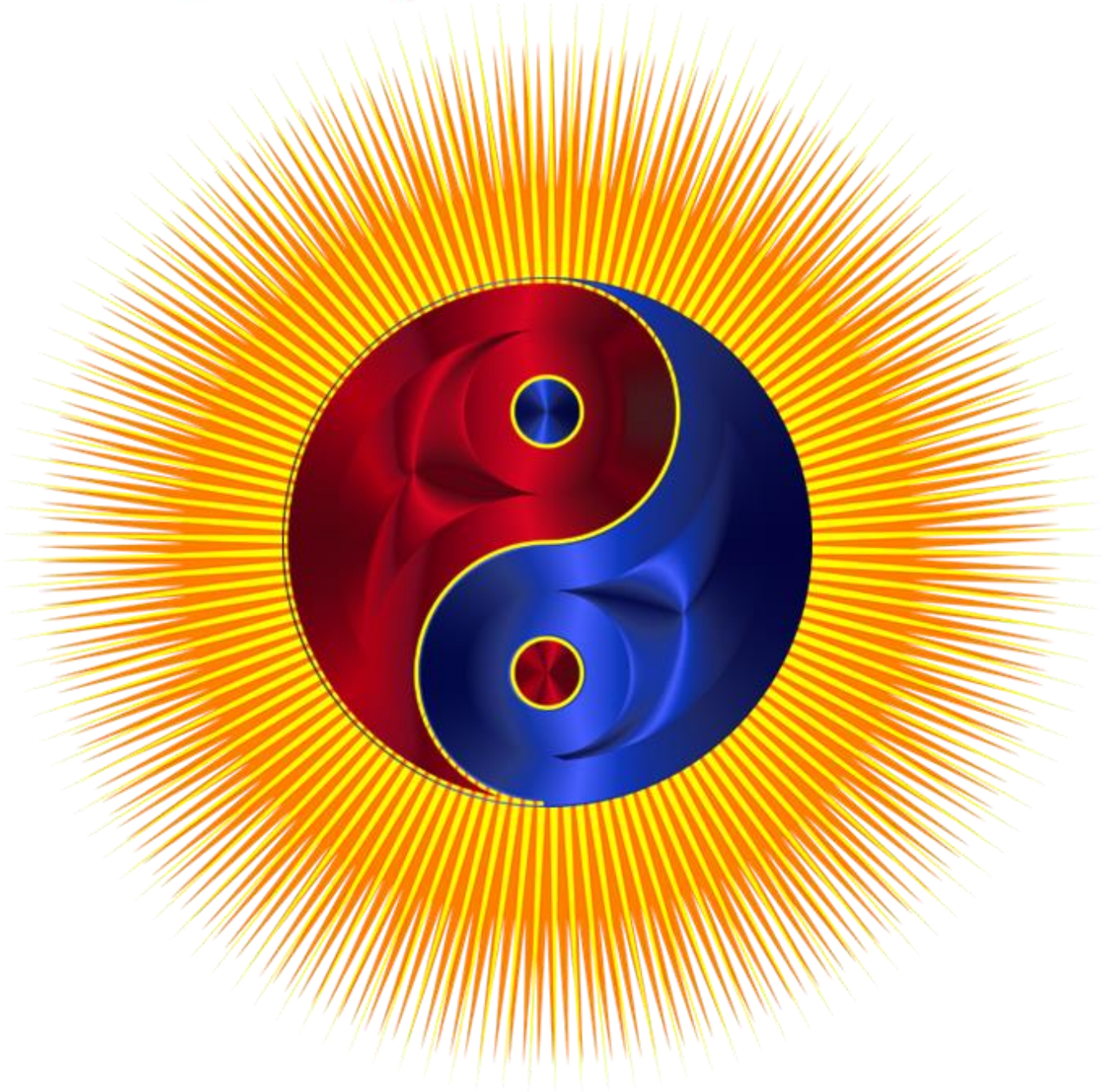
MARY & JESUS



GOD

Throughout the Avonal Age of 1,000 years, their Spirits of Truth will assist us in embracing and engaging with our Feeling Healing and with Divine Love our Soul Healing. They will assist us to develop our soul well into Celestial Heaven status should we persevere with such a goal. The extent to which the Avonal Pair develop themselves while here in the physical on Earth is the level that their Spirits of Truth will be able to assist us. Then it will be Mary and Jesus' Spirits of Truth that will assist us up and out of Nebadon, where our Heavenly Parents will then assist us onto Paradise, Their home.

Our Heavenly Mother and Father



Before we are conceived, we have had nothing to do with the culture or heritage into which we are about to be born.

Conception is individualisation of our unique personality!

Then our parents and carers infuse us with their errors and injuries!

We perpetrate their erroneous ways!

It's all about
Experiences
 &
FEELINGS

John the
Typist



**BE FEELINGS
EXPRESSIVE!**

WILL! The Soul does everything!



WILL Healing

Our HEALING is one long act of Self-Love!

GREAT
*U*Turn

THE
CHANGE
&
Avonal AGE

<http://www.pascashealth.com/index.php/library.html>

Library Download – Pascas Papers

All papers may be freely shared. The fortnightly mailouts are free to all, to be added into the mailout list, kindly provide your email address. info@pascashealth.com

Within the Library Download page within Pascas Care Letters at www.pascashealth.com kindly download the following two files:



[Pascas Care Letters Root Cause now to Pathway Forward.pdf](#)



[Pascas Care Letters Root Cause now to Pathway Forward short.pdf](#)

Important recommended reading is:

by James Moncrief

The Rejected Ones – the Feminine Aspect of God

<http://divinelovesp.weebly.com/my-free-books-and-free-padgett-messages.html> ALSO at
<https://www.pascashealth.com/index.php/library.html?file=files/opensauce/Downloads/MEDICAL%20-%20SPIRITUAL%20REFERENCES/Rejected%20Ones%20via%20James%20Moncrief.pdf>

To liberate one's real self, one's will, being one's soul, is by embracing Feeling Healing so as to clear emotional injuries and errors. With the Divine Love, then one is also Soul Healing. We are to feel our feelings, identify what they are, accept and fully acknowledge that we're feeling them, express them fully, all whilst longing for the truth they are to show us.

Within the Library Download page within Pascas Care Letter at www.pascashealth.com kindly download the following:

- Pascas Care Letters – Family Shelters Abuse & Remedial
- Pascas Care Letters – Family Shelters Overview
- Pascas Care Letters – Family Shelters Protection
- Pascas Care Letters – Family Shelters Social Housing
- Pascas Care Letters – Family Shelters Support Centre
- Pascas Care Letters – Family Shelters towards Liberation

**Be Feeling
Expressive**

*it's all about
Experiences
&
Feelings*

FURTHER READING:

Free downloads are from [www.pascashealth](http://www.pascashealth.com) in the Library Download page, scroll down for the PDFs:

PASCAS CARE PARENTING

Sam's Book – Parenting and Feeling Healing	Book I	Experience
Sam's Book – Parenting and Feeling Healing	Book II	Conception
Sam's Book – Parenting and Feeling Healing	Book III	Magic
Sam's Book – Parenting and Feeling Healing	Book IV	Nothingness
Sam's Book – Parenting and Feeling Healing	Book V	Setting Free
Sam's Book – Parenting and Feeling Healing	Book VI	Pain and Rage
Sam's Book – Parenting and Feeling Healing	Book VII	Vision
Sam's Book – Parenting and Feeling Healing	Book VIII	Childhood
Sam's Book – Parenting and Feeling Healing	Book IX	Self-Acceptance

Pascas Care – Parenting Awareness
 Pascas Care – Parenting Eureka Moment
 Pascas Care – Parenting Feelings Supreme Guides
 Pascas Care – Parenting Health Generation
 Pascas Care – Parenting into the Abyss
 Pascas Care – Parenting Rebellion

Important recommended reading is:

by James Moncrief

The Rejected Ones – the Feminine Aspect of God

<http://divinelovesp.weebly.com/my-free-books-and-free-padgett-messages.html> ALSO at
<https://www.pascashealth.com/index.php/library.html?file=files/opensauce/Downloads/MEDICAL%20-%20SPIRITUAL%20REFERENCES/Rejected%20Ones%20via%20James%20Moncrief.pdf>



Mind Centric Way

Feelings First Freedom

Primary recommended reading:	consider commencing with:	Paul – City of Light and Sage – and the Healing Angels of Light
The Rejected Ones	2002 – 2003	xxx – James Moncrief
Messages from Mary & Jesus	2003	xxx – James Moncrief
Soul Light from Zelmar Melchizedek	2003	xxx – James Moncrief
Paul – City of Light	2005	xxx – James Moncrief
Feeling Healing	2017	– James Moncrief
Religion of Feelings	2017	– James Moncrief
Mary Magdalene and Jesus' comments on the Padgett Messages	2007 – 2010	xxx – James Moncrief
Speaking with Mary Magdalene & Jesus Sage and the Healing Angels of Light	2013 – 2014	xxx – James Moncrief
Road map of Universe and history of Universe:	2017	xxx – James Moncrief
The Urantia Book	1925 – 1935	xxx as primary reading
Divine Love supporting reading:		
Revelations	1954 – 1963	– Dr Daniel Samuels
Judas of Kerioth	2001 – 2003	– Geoff Cutler
The Book of Truths containing the Padgett Messages or Little Book of Truths	1914 – 1923	xxx – Joseph Babinsky
True Gospel Revealed anew by Jesus Vol I, II, III, IV		xxx – Geoff Cutler
Available generally from:		
www.lulu.com	www.amazon.com	www.bookdepository.com
For Divine Love focused websites and forums:		
Pascas Health:	http://www.pascashealth.com/index.php/library.html	
Spiritual Development:	http://new-birth.net/spiritual-subjects/	
Padgett Books:	http://new-birth.net/padgetts-messages/	
	http://divinelovesp.weebly.com/my-free-books-and-free-padgett-messages.htm	

BIBLIOGRAPHY NOTE:

James Moncrief has written numerous books and prepared numerous movie scripts. Incorporated here are primary writings.

Pascas has 600+ supportive 'Pascas Papers' accessible in Library Download at www.pascashealth.com

Pascas Primary publications being:

- U-Turn for Humanity Pascas reveals New Feelings Way
- U-Turn for Humanity pathway being New Feelings Way
- U-Turn for Humanity shutting hells through New Feelings Way
- U-Turn for Humanity soul light and New Feelings Way
- U-Turn for Humanity through the New Feelings Way
- U-Turn for Humanity treacherous assumptions New Feelings Way
- U-Turn for Humanity unfolding the New Feelings Way
- Universal Gift – Feeling Healing with Divine Love
- Feeling Healing and Divine Love Discussion Prompts
- Pascas Care Death & Dying Transition & Assimilation Marjorie

Selected Pascas Papers, as noted below, can be downloaded from www.pascashealth.com from within the Library Download page.

[James Moncrief's books, the Padgett Messages and The Urantia Book at:](#)

DIVINE LOVE SPIRITUALITY – DLS:

<http://divinelovesp.weebly.com/my-free-books-and-free-padgett-messages.html>

All Padgett Messages (for condensed versions – see below) 1914 – 1923 Pages 945
The Urantia Book (see suggested papers to read below)

James Moncrief Books:	MoC		
The Rejected Ones – the Feminine Aspect of God	1,490	Nov 2002 – Jan 2003	228
Messages from Mary and Jesus book 1	1,485	Feb – Apr 2003	189
Messages from Mary and Jesus book 2	1,485	Apr – Oct 2003	170
Soul Light from Zelmar, a Melchizedek, books 1 and 2	1,480	May – Sep 2003	480
Mary Magdalene and Jesus' comments on the Padgett Messages – book 1		Aug 2007	164
Messages from 31 May 1914 – 12 January 1915	1,495		
Mary Magdalene and Jesus' comments on the Padgett Messages – book 2		Sep 2010	177
Messages from 13 January 1915 – 29 August 1915	1,494		
Speaking with Mary Magdalene and Jesus blog – book 1	1,490	Jan – Apr 2013	206
Speaking with Mary Magdalene and Jesus blog – book 2	1,489	Apr – May 2013	229
Speaking with Mary Magdalene and Jesus blog – book 3	1,490	Oct – Jan 2014	187
Speaking with Mary Magdalene and Jesus blog – book 4	1,491	Jan – May 2014	191
Mary Magdalene comments on Revelation from the Bible KJV	1,485	Dec 2013 – Jan 2014	84
			This group being pages of 2,305

Paul – City of Light	1,488.5	2005	149
Ann and Terry		2013	235
Feeling bad? Bad Feelings are GOOD!	feeling-healing book 1	2006	179
Feeling bad will make you feel BETTER – Eventually!	feeling-healing book 2	2006	159
Breaking the Golden Rule.	feeling-healing book 3	2006	168
Feeling-Healing exercises, and other healing points to consider.		2009	175
Cathy and Mark – a novel introducing Feeling-Healing.		2010	151
Introduction course to Divine Love Spirituality		2006	139
Speaking with the Dead, Death and Dying		2009	173
Spirits and their Childhood Repression Healing		2010	179
With Verna – a nature spirit		2008	279
Communication with spirits – meet a spirit friend			2010
37			
Introduction to Divine Love Spirituality website			362
Sage – and the Healing Angels of Light		2017	260
Divine Love Spirituality	1,500	2017	201
Feeling Healing – you can heal yourself through your feelings		2017	153
Religion of Feelings	1,500	2017	47

This group being pages of 3,046

Religion of Feelings

<http://religionoffeelings.weebly.com/>

Introduction to Divine Love Spirituality

<http://dlspirituality.weebly.com/>

Main website of DLS

<http://divinelovesp.weebly.com/>

Childhood Repression website

<http://childhoodrepression.weebly.com/>

DLS and CR forum

<http://dlscr.freeforums.net/>

<http://withmarymagdaleneandjesus.weebly.com/blog---and-free-books-speaking-with-mary-and-jesus>

FEELING HEALING and SOUL HEALING with the DIVINE LOVE:

James Moncrief Publications:

all publications are free downloads:

<http://divinelovesp.weebly.com/my-free-books-and-free-padgett-messages.html>

It is suggested for one to consider reading as follows:

Speaking with Mary Magdalene and Jesus – books 1 – 4

These four books encapsulate the second of the revelations with the first having been introduced by James Padgett one hundred years previously. These four books provide a wide range of guidance that has never previously been made available.

Soul Light – books 1 and 2

A Melchizedek, Zelmar, sums up how we are to heal ourselves and ascend to Paradise.

Paul – City of Light

As a gentle intro into the Divine Love and Healing; being James Moncrief's first novel.

Ann and Terry

An example for people who might want to immediately start working on themselves and doing their Healing.

Feeling Bad? Bad Feelings are GOOD

For more understanding about our denial of our feelings and why we should not deny our feelings, and it includes how it all came about for James, using himself as an example.

Feeling bad will make you feel BETTER – Eventually!

This includes specific examples of Marion and James working on expressing particular bad feelings, again with the hope that it will help others gain something of an idea as to what's involved in doing your Feeling Healing.

Sage – and the Healing Angels of Light

Through Sage who's 13 years old, the story is primarily about the two aspects of healing; that being, with the help of our angels, and the full Healing we can do by looking to our feelings for their truth.

Religion of Feelings

Feeling Healing

Welcome to LOVE – the Religion of Feelings

you can heal yourself through your feelings

So these books, including the four Speaking with Mary Magdalene and Jesus books, provide the essence of it all and are examples of James' work. Then it's up to whatever takes one's fancy. Other reading to consider may include:

The Padgett Messages being published as:

The True Gospel Revealed Anew by Jesus volumes 1 – 4

Book of Truths by Joseph Babinsky

The Urantia Book

Release one's pain through expressing one's feelings.



in conjunction with

Longing for the Truth when also longing for Divine Love.

FEELING HEALING with DIVINE LOVE is SOUL HEALING:

A collection of 'papers' that draw together specific topics including all of the above and more from other sources of information and revelation designed to help increase one's awareness about why we have the problems we do and how to heal them, all whilst living a more healthy and sustainable life. They provide a brief snapshot of the more complicated topics and issues.

**Firstly, consider discovering the truth of your emotional pain through Feeling Healing.
Secondly, consider longing for our Heavenly Parents' Love as you progress with your healing.
Primary and most important readings are the writings of James Moncrief.
Then consider the Padgett Messages, and then The Urantia Book.**

Pascas Papers, being free, are located within the Library Download www.pascashealth.com
<http://www.pascashealth.com/index.php/library.html>

[PASCAS – document schedule.pdf](#) downloadable index to all 550+ Pascas Papers.

FH denotes Feeling Healing; SH denotes Soul Healing, which is: Feeling Healing with the Divine Love;
DL denotes Divine Love – living with the Love.

PASCAS INTRODUCTION NOTES: *All papers below can be found at Library Download link.*

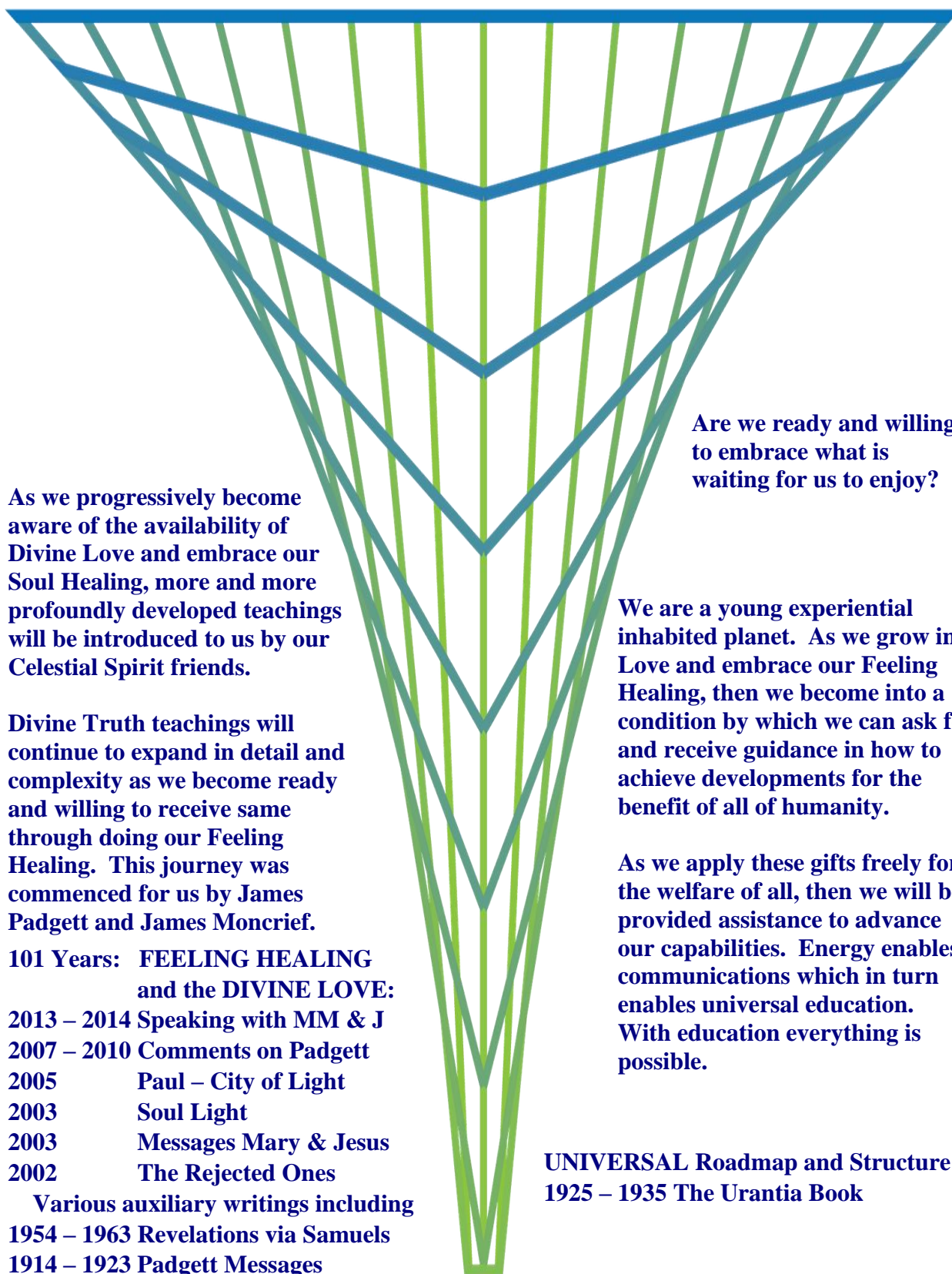
Pascas Care Letters A Huge Upturn
Pascas Care Letters Big Revelation
Pascas Care Letters Feeling Healing Benefits Children
Pascas Care Letters Feeling Healing Way
Pascas Care Letters Little Children
Pascas Care Letters Women's Liberation and Mother

MEDICAL – EMOTIONS:

Pascas Care – Feeling Healing
Pascas Care – Feeling Healing All is Within
Pascas Care – Feeling Healing and Health
Pascas Care – Feeling Healing and History
Pascas Care – Feeling Healing and Parenting
Pascas Care – Feeling Healing and Rebellion
Pascas Care – Feeling Healing and Starting
Pascas Care – Feeling Healing and Will
Pascas Care – Feeling Healing Angel Assistance
Pascas Care – Feeling Healing Being Unloved
Pascas Care – Feeling Healing Child Control
Pascas Care – Feeling Healing Childhood Repression
Pascas Care – Feeling Healing End Times
Pascas Care – Feeling Healing is Rebelling
Pascas Care – Feeling Healing Live True
Pascas Care – Feeling Healing Mary Speaks
Pascas Care – Feeling Healing My Soul
Pascas Care – Feeling Healing Perfect State
Pascas Care – Feeling Healing Revelations X 2
Pascas Care – Feeling Healing the Future
Pascas Care – Feeling Healing Trust Yourself
Pascas Care – Feeling Healing Versus Cult

**PASCAS
PAPERS**

DIVINE LOVE and DIVINE TRUTH Revelations and Teachings escalating:



Before the revelation of Feeling Healing, and with Divine Love, Soul Healing, we have been withheld in mediocrity!

It is now possible to smash through the Glass Ceiling to infinite growth in Truth and Love!



"THE" profession is:



TEACHING



to:

Learn through play
Independently explore subject
Research with fellow students
Explore topics you enjoy
Engage in what you are passionate about
Ask — and keep asking
Question every aspect
Commonsense is not common
Assumptions are mostly in error
Embrace what you may be feeling
We have been retarded and restrained
We are to be our true self
We are to express all our feelings
We are self contained — all is within
By doing is how we learn
Tutoring others is a great self teacher
Our capabilities are infinite



while you

