

PASCAS FOUNDATION (AUST) Ltd



PASCAS FOUNDATION (AUST) Ltd
11 Crenshaw Court
Parkwood 4214 Queensland Australia

ABN 23 133 271 593
www.pascasworldcare.com

Bs +61 7 5594 0479
www.pascashealth.com
Em: info@financefacilities.com

3 January 2020

SPIRITUAL EVOLUTION and ENVIRONMENTAL CHANGES

Nanna Beth, 3rd Celestial Heaven: **Many people at this time want something new, and something Really New, not just new yet which is more of the same old stuff. Many people can see that things don't work, that over and over again over the years people try to solve the world's problems and yet it might be a patch up job for a moment but then the same problems reassert themselves. So, when you (Pascas) start 'reaching out' then people will begin to realise that this is Very Different and within it there might be some chance of real change.**

Saturday, 14 December 2019

Back on 17 December 2011, Verna, a Nature Spirit, wrote with James; "Along with the increase in volcanic events it will be discovered that the ambient temperature of the upper crust is also warming, the ground will warm up a little. **We're only talking about one degree**, but it will add to the problems of increasing the ocean temperatures, rainfall distribution, melting the ice at the poles and how and where food will be grown." Now in December 2018, the Australian scientific research body, CSIRO, published a report confirming that temperatures for the Australian environment, including oceans, had increased by 1°Celsius.

Humanity is experiencing disturbance and disruption at all levels. All aspects of our environment is in a state of flux and change. Nothing is to remain the same. What is unfolding with our planet is cyclical in nature, however this is coinciding with the end of one spiritual age and the commencement of another.

For 200,000 years humanity has experimented with living through the mind and now that Rebellion and Default is to be ended and we are to discover and embrace Living Feelings First.



All of nature lives through the mind. However, humanity though part of nature, is with soul and is to live through our feelings that are soul based and are always in truth and loving. It was through the seducement by high level Lanonandek spirits, namely the Lucifer, Satan, Caligastia and Daligastia soulmate pairs, that humanity embraced the error of living through the mind. Now what is unfolding is the ending of that error and the slow but progressive embracement of living through soul based feelings.

So who is Verna? Verna arrived on Earth with the first batch of nature spirits and this group were the first life on Earth. You could say she is a very old lady but she is one very incredible lady on her last assignment as a nature spirit from which she will then progress to being an angel. All that we see as living

nature does not reincarnate. The life force from bacteria, insects, plants, trees, fish, birds and animals all goes into a pool from which nature spirits are then formed. Verna is a composite of terrestrial and aquatic life, about half and half, and is formed from some 500 billion living elements from nature - "composed of about five hundred billion creature spirits" as Verna wrote on 7 May 2012.

Why have we not previously heard from Nature Spirits? Throughout the term of the Rebellion and Default, communications were cut off between humanity and nature spirits. Even now they are only to communicate with those who embrace and engage in their Feeling Healing and Divine Love.

And who is Nanna Beth? Elizabeth McDonell was her name and she died on 5 October 1951. She has completed her Healing progressing through the Divine Love healing spirit Mansion Worlds 3, 5 and 7 and now has progressed to the third Celestial Heaven. Her soulgroup, as all soulgroups, consists of 12 soulmate pairs and she is the spokesperson on behalf of her soulgroup. Nanna Beth is John's spirit guide and grandmother, but more importantly she is the communication point between James who is completing his healing, and the spirit personalities within the Celestial Heavens.



As physical people on Earth progress and complete their Feeling Healing, then the Great U-Turn will unfold for all of humanity as will the Avonal Age of 1,000 years proceed.

During the coming 1,000 years, conditions on Earth will remain disturbing so as to not allow the old ways of the Rebellion and Default to be re-established. For those who embrace Feeling Healing and Divine Love, life will be positive and even exciting. For those who close themselves off to the new way of living, life will be very difficult.

What we are observing in weather and Earth events is only an example of what is to come to ensure that humanity succeeds in putting the Rebellion and Default behind it and that Living Feelings First is universally embraced.

Living Feelings First

Brian Iverach, Graham Golding, Jim Baker and John Doel

Pascas Foundation (Aust) Limited

**Doing your feeling-healing is telling your story.
It's telling the truth of your whole story.
And it's all for you.**

Abandon Control

Feelings *first*

Feelings First Spirituality, The New Way
Feelings are your own truth and personality

Feelings First Spirituality, The New Way
Unlock your Truth through your Feelings

FEELINGS FIRST **for kids**

LIVE FEELINGS FIRST

PROGRESSION TOWARDS the NEW SPIRITUAL AGE – 2020 is the YEAR!

Dr David R Hawkins researched and developed the application of kinesiology muscle testing for more than 20 years prior to publishing *Power vs Force* and the Map of Consciousness (MoC) table in 1995.

As per the table below, what he came to understand that prior to the conception of Jesus of Nazareth and Mary Magdalene, humanity calibrated overall at 101 on the MoC. Following Jesus' life and that of the Apostles, humanity calibrated around 190 on the MoC at which humanity continued up until around the 1960s. During this era the world population grew from around 300 million to 3 billion, however the MoC calibration for all of humanity remained around 190.

Worldwide Level of Consciousness based on the Map of Consciousness

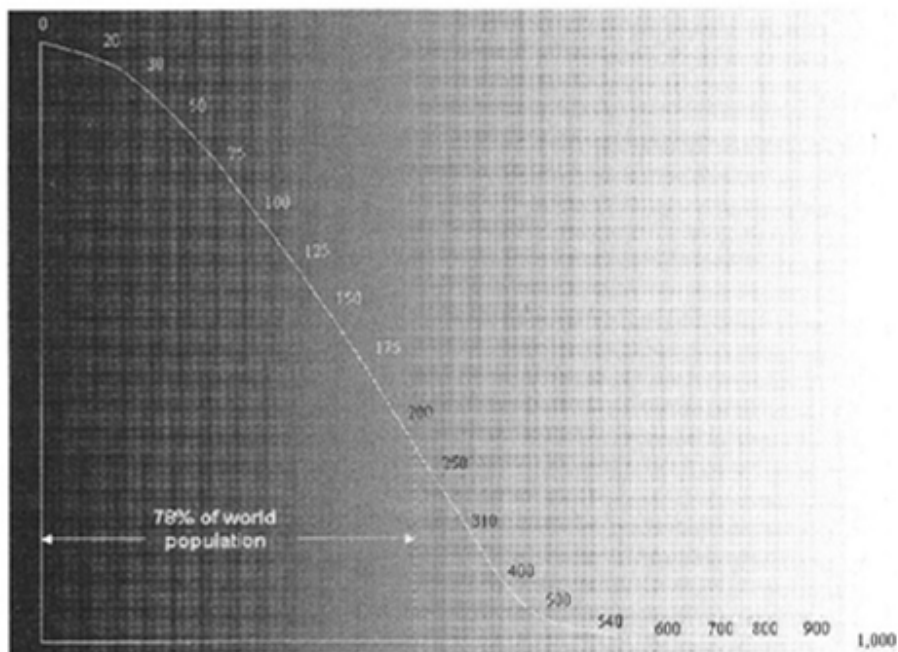
see *Power vs Force* by Dr David R Hawkins

6,000 years ago	72
At the time the Vedas were written	74
At the birth of Buddha	90
Prior to the conception of Jesus of Nazareth	100
After the birth of Jesus of Nazareth	147
When Christ was taken from the cross	148
At the Last Supper	150
At the death of the last apostle	182
At the birth of Charlemagne	182
In 827 AD (at the death of Charlemagne)	190
When Abraham Lincoln took office as President 4 Mar 1861	190
Lincoln was shot and killed 14 Apr 1865	193
1944: birth of almost 200 Homo-Spiritus children	194
1987: At the time of the Harmonic Convergence but not necessarily related to it, consciousness of humanity jumped	207
2008: Current observation as we move forward to an apparent evolutionary jump, which will be a slow, steady process	212
2020 January 3: World population is now 7.8 billion. Humanity as of this date calibrates overall at	219
This increase is wholly attributable to two soulmate pairs who have significantly progressed with their Feeling Healing	

For nearly 2,000 years humanity has not been able to progress with their evolutionary development. For all of that time, with humanity calibrating below 200 on the Map of Consciousness; at the level of 190, the potential for total self-destruction prevailed. Only at a level greater than 200 is humanity able to survive. We are not going to self-destruct. We are going to move into the next spiritual age. However as we are to leave behind all the systems and way of life that has prevailed these past 200,000 years of Rebellion and Default, everything will change. We will not be allowed to fall back to the ways of living that we are accustomed to. Thus our environment will change. This we experience through the marginal increases of temperature worldwide and other changes and events. Nothing will remain the same. All institutions and ways of living will collapse around us as we need to now evolve.

*Distribution of Levels of Consciousness of Mankind***Overall World Population 2004**

As noted elsewhere, the overall average consciousness level of mankind evolved very slowly over vast periods of time and was at 90 at the time of the Buddha, 100 at the time of the birth of Jesus Christ, and then evolved slowly to 190, where it stayed over the last millennium until the late 1980s, when it jumped to 205. In November 2003, it moved up to the current level of 207. The distribution in the world shows that approximately seventy-eight percent of the world's population calibrates below 200. (The comparative figure for the United States, however, is forty-nine percent). The innate distribution is displayed as a progression curve, as follows:

Distribution of World Level of Consciousness

234 POWER VERSUS FORCE

Dr David R Hawkins – published 1995

We have established that consciousness is capable of discerning any change of energy to a degree of $\log 10^{-\infty}$. This means that there is no possible event in the entire universe not detectable by the exquisite sensitivity of consciousness itself. The energy of human thought, though minute, is nonetheless absolutely measurable. A thought which emanates from the 100 level of consciousness will typically measure between $\log 10^{-800}$ million to 10^{-700} million microwatts. On the other hand, a loving thought at the consciousness level of 500 measures approximately $\log 10^{-35}$ million microwatts.

Although only fifteen percent of the world's population is above the critical consciousness level of 200, the collective power of that fifteen percent has the weight to counterbalance the negativity of the remaining eighty-five percent of the world's population. Because the scale of power advances logarithmically, a single Avatar at a consciousness level of 1,000 can, in fact, totally counterbalance the collective negativity of all mankind. Kinesiological testing has shown that:

One individual at level 700	<i>counterbalances</i>	70 million individuals below level 200
One individual at level 600	<i>counterbalances</i>	10 million individuals below level 200
One individual at level 500	<i>counterbalances</i>	750,000 individuals below level 200
One individual at level 400	<i>counterbalances</i>	400,000 individuals below level 200
One individual at level 300	<i>counterbalances</i>	90,000 individuals below level 200
Twelve individuals at level 700	<i>equal</i>	one Avatar at 1,000

(There are currently 12 persons on the planet who calibrate at 700.)

Were it not for these counterbalances, mankind would self-destruct out of the sheer mass of its unopposed negativity. The difference in power between a loving thought (10^{-35} million microwatts) and a fearful thought (10^{-750} million microwatts) is so enormous as to be beyond the capacity of the human imagination to easily comprehend. We can see from the analysis above, however, that even a few loving thoughts during the course of the day more than counterbalance all of our negative thoughts.

NATURAL LOVE or HUMANITY's ERRONEOUS EMOTIONS:

Your soul, being your real you, is an emotional being. Your soul, though a thought of God, does not possess anything of the divine within it. It existed in a state of bliss, in a natural love state, pending individualisation which is achieved at conception which is the time of incarnation. Your soul is endowed with natural love emotions noted within the top section of the Map of Consciousness scale, being those emotions calibrating above 200.

MAP OF CONSCIOUSNESS					
God-view	Life-view	Level	Log	Emotion	Process
Self	Is	Enlightenment	700 1000	Ineffable	Pure Consciousness
All-Being	Perfect	Peace	↑ 600	Bliss	Illumination
One	Complete	Joy	↑ 540	Serenity	Transfiguration
Loving	Benign	Love	↑ 500	Reverence	Revelation
Wise	Meaningful	Reason	↑ 400	Understanding	Abstraction
Merciful	Harmonious	Acceptance	↑ 350	Forgiveness	Transcendence
Inspiring	Hopeful	Willingness	↑ 310	Optimism	Intention
Enabling	Satisfactory	Neutrality	↑ 250	Trust	Release
Permitting	Feasible	Courage	↑ 200	Affirmation	Empowerment

Humanity's erroneous emotions are those calibrating below 200 on the Map of Consciousness. The environment around a newly conceived child progressively degrades the condition of that child's soul. When the child reaches about the age of 7, the child's soul condition will reflect the parent's condition. These negative emotions are like a crust around the pure soul it has within.

MAP OF CONSCIOUSNESS					
God-view	Life-view	Level	Log	Emotion	Process
Man made dis-empowering emotions:			↓ 200	All the negative emotions	
Indifferent	Demanding	Pride	↓ 175	Scorn	Inflation
Vengeful	Antagonistic	Anger	↓ 150	Hate	Aggression
Denying	Disappointing	Desire	↓ 125	Craving	Enslavement
Punitive	Frightening	Fear	↓ 100	Anxiety	Withdrawal
Disdainful	Tragic	Grief	↓ 75	Regret	Despondency
Condemning	Hopeless	Apathy	↓ 50	Despair	Abdication
Vindictive	Evil	Guilt	↓ 30	Blame	Destruction
Despising	Miserable	Shame	20	Humiliation	Elimination

MAP OF CONSCIOUSNESS

Level	Log
ENLIGHTENMENT	700-1000
PEACE	600
JOY	540
LOVE	500
REASON	400
ACCEPTANCE	350
WILLINGNESS	310
NEUTRALITY	250
COURAGE	200
PRIDE	175
ANGER	150
DESIRE	125
FEAR	100
GRIEF	75
APATHY	50
GUILT	30
SHAME	20

PERSONALITY TRAITS:

Less than two dozen people on planet Earth.

Would not pick up a weapon let alone use it. These people gravitate to the health industry and humanitarian programs.

Debate and implement resolutions without argument and delay.

Debate and implement resolutions in due course.

Debate and implement resolutions with some degree of follow up generally needed.

Management supervision is generally necessary.

Politics become the hope for man's salvation. Cause no harm to others starts to emerge.

Power overrides force.

Illness is developed by those man erroneous emotions that calibrate 200 and lower.

Armies around the world function on pride. Force is now dominant, not power.

Harm of others prevails, self-interest prevails.

Totally self-reliant, not God reliant.

Fear dominates all motivation.

Suicide is possible and probable.

At these levels, seriously harming others for even trivial events appears to be justifiable.

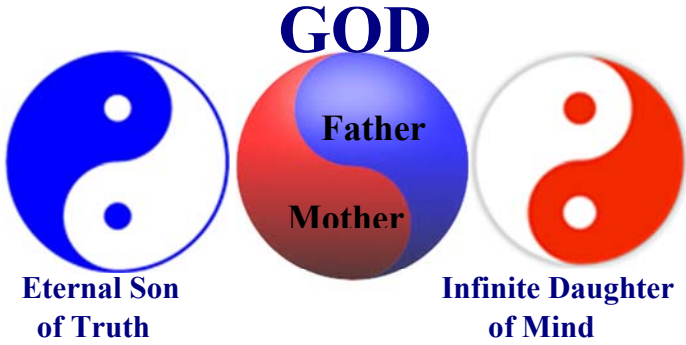
Poverty, unemployment, illness, etc., this is living hell on Earth.

MAP of CONSCIOUSNESS CALIBRATIONS reflect the nature of the TOPIC:

The level of truth of a topic or subject is reflected in the calibration through employing Dr David R Hawkins' Map of Consciousness with kinesiology muscle testing. A publication or movie about manufacturing food would be around 200, whereas meals prepared in a loving home would be around 500. The subject of pornography through to war would be less than 200, whereas natural love topics can readily be over 500 and up into the 800's plus. Material introducing Feeling Healing with Divine Love, by its nature, will range between 1,480 to 1,500 on Dr David R Hawkins' Map of Consciousness (MoC), in its purest form of presentation. This has never been previously achieved.

MAP of CONSCIOUSNESS	MoC	calibrations
God, our Heavenly Mother and Father	Infinity	Location being Isle of Paradise
Celestial Heavens peak	1,500	3 rd Celestial Heaven (10 th spirit Mansion World)
Feeling Healing / Divine Love teachings	1,480 – 1,500	3 rd Celestial Heaven spirit guided
Now at one with Heavenly Parents	1,081	1 st Celestial Heaven entry at Jerusem
Feeling Healing with Divine Love	1,080	7 th Divine Love transitional sphere to Heavens
Natural Love peak	1,000	6 th spirit Mansion World peak – can't go further!
Pascas WorldCare (as a platform)	880	5 th spirit Mansion World equivalent Divine Love.
Lamsa Bible (minus the Old Testament and Book of Revelation, but including Genesis, Psalms, and Proverbs)	880	4 th spirit Mansion World equivalent being natural love orientated, the Bible is taking one away from truth – their soul-based feelings.
Koran	700	4 th spirit Mansion World equivalent.
Torah	550	First five books of the 24 books of the Tanakh.
Cookies made for Family	520	Made with love (this supports cooking shows).
Enter EITHER natural or divine pathway	500	2 nd natural love OR 3 rd Divine Love spirit world.
Peak of mind total orientation	499	1 st spirit Mansion World peak.
King James Bible (from the Greek)	475	
Roman Catholic Church	450	Church (worldwide) – mind controlled – reason.
Home cooked sea fish + organic salad	410	
Home roasted free range chicken + salad	410	
Wine or Beer	330	(in moderation!)
Roman Catholicism administration	305	As an institution in year 2004.
Tea green	300	
Humanity	212	The population of the world overall.
Vegetarianism	205	
Muesli	205	Above 200 is pro-life – positive.
Food	200	At this level and above food is life enhancing.
Food, Commercial Cat	192 – 202	Below 200 is anti-life – negative.
Food, Commercial Machine-made	188 – 200	Energy dense but nutrition poor.
Black Tea	185	Refining of most foods removes nutrients.
Percolated Coffee / Cappuccino / etc	165	
Corn Flakes	85	
Fish (living in ocean)	20	
Bacteria	1	

CREATION of SOUL and SPIRIT:



God is *The Paradise Trinity* — the eternal Deity union of the Personalities: the Universal Mother and Father; the Eternal Son of Truth; and the Infinite Daughter Spirit of Mind.

The soul of each human personality (sons and daughters of truth) is existential, driving our personality expression in the experiential. The soul of each human finds truth by embracing one’s feelings and longing for the truth of them. We are to attain the Eternal Son of Truth. We are a creation of Truth.



Feeling Pathway

Mind Pathway



The soul of angels is experiential, evolving through their experience by continually progressing in mind development. Angels are to attain the Infinite Daughter (Spirit) of Mind. Angels are a creation of Mind.

Our soul is duplex (we have a soulmate) and is created by our Heavenly Parents. Through our Feeling Healing we perfect ourselves enabling the union with our soulmate, as we progress in truth up through the Mansion Worlds, celestial heavens and all the way to Paradise.

Soulmate Pair

Angel



The soul of angels is also duplex, yet of the mind, and they progress in mind evolution to Paradise. Animals, plants and nature spirits are also creations of Mind.

Neither we nor animals reincarnate. We never die; upon death, we move into the spirit Mansion Worlds on our journey to Paradise. When animals and plants die, be they the tiny microbe to the mighty elephants of the land and the whales of the ocean, their spirit energy returns to the Spirit Collective Energy. And from this energy are drawn other animals and the nature spirits, who then in turn move onto becoming angels through increasing mind experience.

Spirit Person

Nature Spirit



A nature spirit is an angel in waiting.

EARTH CHANGES

Monday, 17 December 2018

James: Hi Nanna Beth, I feel like a chat, is that all right with you?

Nanna Beth – 3rd Celestial Heaven: Also you might like to know, the Earth itself is starting to change its rotation speed and is slightly moving on its axis, thereby causing shifts in surface weather patterns as warming and cooling takes effect, just happening in different places than how it has been. And these changes are coming from the core that's being affected by greater space changes. There is always massive pressures and forces affecting every part of natural creation, so the world and all space and all that's within it. And as David (Montaigne) points out, observers have observed that things remain the same. At least seem to be the same, although with minute incremental changes, all of which culminate to periodic, large swift changes. And so humanity is coming into a time of rapid change, and on all levels, not just the physical or spiritual. Of which I still can't say more.

So the debate about global warming or cooling will continue with both being right, as both are occurring. And in some areas they are affecting each other – in other areas they are happening independent of each other.

James: Thank you Nanna Beth, you've covered all I was wanting you to update.

Important recommended reading is:

by James Moncrief

The Rejected Ones – the Feminine Aspect of God

<http://divinelovesp.weebly.com/my-free-books-and-free-padgett-messages.html> ALSO at
<https://www.pascashealth.com/index.php/library.html?file=files/opensauce/Downloads/MEDICAL%20-%20SPIRITUAL%20REFERENCES/Rejected%20Ones%20via%20James%20Moncrief.pdf>

www.PascasHealth.com go to Library Downloads:

Pascas Care Letters – Environmental Collaboration Awareness
 Pascas Care Letters – Environmental Collaboration Beginning
 Pascas Care Letters – Environmental Collaboration Crisis 21st Century
 Pascas Care Letters – Environmental Collaboration Developed Civilisations
 Pascas Care Letters – Spiritual Evolution and Environmental Changes
 Pascas Finance – Villageism
 Pascas Park – Spaceship Earth
 Pascas Park – Underground Village
 Pascas Park – Underground Village Down the Rabbit Hole
 Pascas WorldCare – Climate Change and Spirituality
 Pascas WorldCare – Third Rock from the Sun

<http://www.pascashealth.com/index.php/library.html>

Library Downloads – Pascas Papers

All papers may be freely shared. The fortnightly mailouts are free to all, to be added into the mailout list, kindly provide your email address. info@pascashealth.com

EARTH CHANGES:

27 September 2011

Extracts from 'With Verna – a Nature Spirit' by James Moncrief

Verna: There's a marked increase in the 'goings on' inside Earth being brought about possibly by natural internal factors, factors extra-terrestrial, or a combination of both – even one in league with the other. And I'm going to speak about such things in more detail later. But for now, you and the people you've read who think along such lines are correct. There is much going on, both from within and without.

It's going to be a horrendous time for humanity overall. But that's not to say that within it there will be much good and lots of good feelings for some people, and mostly for those people wanting to move with it in the understanding that it's for humanity's good. And as it couldn't go on any longer how it was, so something needed to happen.

What is happening now is yet another evolutionary event. However it's not going to come about as it did back then. It's coming about as a combination of humanity's impact on the planet and natural events, timed to enhance humanity's impact. All so in the end, a 'new' humanity will result, willing and able to live on the world in a 'new' way. Back 65 million years ago it was purely a biological change. Now it's one all for humanity. A spiritual change for humanity as Mary (Magdalene) was telling you. A huge change, moving from living in a completely negative state, ending it, and moving to live in a completely positive one. And all along the way nature will be affected in various ways.



All that's to happen now is more to set the stage, or scene, for the 'new' humanity to evolve into being. That being on a spiritual level, rather than a whole new evolutionary line of creatures as it was with the demise of the reptile based nature, to the rise of the mammalian one. However, as I've already told you, some new creatures will come into being during the planetary ages to come, and others that have or will become extinct, will be brought back into being.

However, the coming Earth changes will have periods of intense activity right through this turning of the age and the next one of one thousand years. There will be ups and downs, but overall the next age will be one of ongoing tumultuous times for the surface of the planet. And it's all designed to keep humanity giving up its evilness and helping it seek the way of truth. There's not to be one big cataclysmic episode now, and then it's all peace and harmony on Earth, and people can get back to re-building all they've had – all their negative way of being and wrongness. Or even set about living in peace and harmony because of some dimensional change or new spiritual light and upliftment affecting the raising of humanity's consciousness to a higher level of peace, having giving up greed and self-indulgence in material things. No, all that is to come is not to let you off the hook or allow you to keep going only manifesting and so expressing yet another version of truth denial.

The spiritual upliftment so far as the new 'vibration' humanity will experience is the new vibe of the next age, and it's upliftment will only be uplifting those people who chose to do their healing, to submit to their bad feelings and by expressing them to uncover the truth of their evilness – all that resulted from their childhood. All the rest is nonsense perpetuated by ignorant mind spirits. Certainly there is new cosmic light coming to Urantia (Earth) from Paradise, being stepped down in universal harmony through Nebadon (our local universe of which Jesus and Mary are regents); and certainly there is new soul-light being emitted from every soul on the planet. But as to how people choose to react to all of that is a personal choice, and many will fight their natural desire to seek the truth and so heal themselves, choosing instead to keep going in their negative states. And for such people, some will be relatively successful at doing it and keeping abreast of the increasing 'lights', others won't be so successful, failing and then succumbing to their bad feelings. And many will go to their graves feeling very bad about life; other's

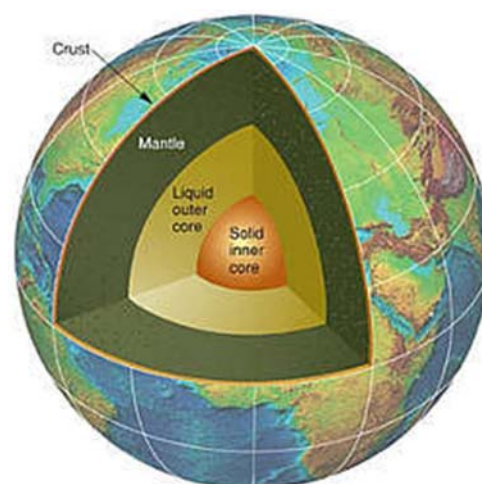
will want to know why they feel so bad so often and honour their bad feelings and start looking seriously for the truth. But overall, increasing inner and outer pressure will be brought to bear on humanity as it moves through the next age. A certain level of collective consciousness about its negative state, and a certain level of desire to heal humanity's evilness needs, both personally and collectively, to be achieved by the end of the next age; and as all things are perfect, it will be.

James: Okay, so back to the heart of the matter, the Earth changes.

Verna: Well, as you've read, the amount of seismic activity is on the increase, this being because the amount of rotation within the core of the Earth is speeding up. It's immeasurable currently to science, however as the core of Earth starts to move faster, so all the outer parts move faster, and that's stirring up the continental movement, which as you know from plate tectonics, is causing the crustal plates to grind against each other, with the stresses being released as earthquakes. And this core rotation is going to keep increasing for the next one thousand years.

James: Do you mean the whole Earth is spinning on its axis faster?

Verna: No, I mean the components of the core are in relation to each other, moving faster, which could be seen, as for the need of a mental picture, that the core is rotating faster. It's more to do with hidden forces within the planet, one's humanity is yet to uncover; and they are more to do with, and respond directly to, the spiritual or higher light frequencies.



James: So it's like the spiritual rotation of Earth is increasing.

Verna: Yes, you could say it like that, and it's then having a direct effect on the material level.

James: Okay, so it's all coming from inner levels, not just the physical.

Verna: As does everything. The physical world, the globe as you know it, only responds to inner or more spiritual levels, it exists because of these levels, the whole physical level of creation does. From our spiritual perspective, we living in these higher or inner dimensions, we can see the energy, the light, we can sense it; we can sense it in all physical things; and we can sense or perceive – we 'feel it', as increasing in frequency. And so the physical planet is responding, it has to, it can't be otherwise.

James: So it's not just, say, because of what the sun is doing that's affecting the Earth?

Verna: That is happening too, it all being part of the physical relationship and interaction in those relationships. However the sun too is being driven, and so continuously affected, by the inner, unseen, and unknown to you, spiritual levels. You are only at best observing the physical level of Creation and trying to work out laws that determine it. However there is another whole plane or 'dimension' of laws that determine the relationship of the physical to the spiritual. And then even more laws determining the spiritual, and all the levels of the spiritual and there are many, all the way to Paradise.

James: Okay, so whatever is happening, we won't be able to detect, only possibly seeing signs of it on the physical that are resulting from the increase movements of the surface crustal plates.

Verna: Yes, the sea floor is spreading faster in places as the subsidence of one plate under another is

increasing, all making for very exciting times on the face of the Earth, if that's what excites you.

I can tell you, those like me who are from the very old days, boy, did we have fun back then, we were delirious during those times of massive Earth changes. And there were some times of massive changes. All that Earth is to go through now will be comparatively mild, just a remnant taste of the old days. Relative to back then, the Earth is destined to remain quite stable. It will have one last massive bout of cataclysmic Earth changes reminiscent of the ancient times when it's all to come to an End and Cease to Be, but humanity will be long gone by then.

I was talking about the acceleration of the rotation of the core of the Earth, but on inner levels, and how that's what's causing all the shifting in the crustal plates. And so this is what will cause most of the earthquakes. Now from your geology days at university, you remember being told about 'hot spots' where the continental plates move over places where magma forces itself to the surface bringing about island chains and chains of continental volcanoes? Well there's going to be a lot more of these erupting as well, old and even ancient ones coming to life again.

James: One website I visit posts up-to-date information on the status of many volcanos, and many of them are coming to life, and have been for a few years. Even ones scientists didn't know existed.

Verna: Yes, and this is going to increase. There are going to be a few mega explosive events during the next fifty years. Some that will cause the sun's rays to be blocked out for a number of days, but nothing too bad. However, there will be continuous smaller eruptions and many of them all disturbing the normal way of things, such as air flights, communications, and causing many people to be relocated. It's not so much the intensity of the volcanic eruptions that are to come, but how many of them and what combined effect they will have. A lot of new lava is going to come out onto the surface, this having a heating effect adding to the general present consensus of global warming.



James: So is global warming a reality, or is it our imagination; and is it something humanity is doing, or is it naturally happening?

Verna: It's naturally happening. However, overall the planet is moving toward another smaller ice age, but that's a long way off. In the short term it will warm significantly adding to humanity's problems, once all the volcanic activity gets going.

Along with the increase in volcanic events it will be discovered that the ambient temperature of the upper crust is also warming, the ground will warm up a little. **We're only talking about one degree**, but it will add to the problems of increasing the ocean temperatures, rainfall distribution, melting the ice at the poles and how and where food will be grown.

James: I was reading whereby all of this is coming about because of the breaking down of Earth's magnetic field, all leading to a pole reversal. This all being caused by the sun moving towards a solar maximum in the next couple of years.

Verna: It's all part and parcel of it. Scientists will continue to understand all that's taking place on many physical levels as events unfold. But really, it's all being caused by the increasing spiritual light that's

driving the whole thing right through Nebadon. It's not just Earth and your sun that's being affected. On all worlds, ages are changing and spirits are moving on, and things are happening. You're just one piece in the whole.

So because of these warming influences, the weather will become more wild, more subject to change, and more unpredictable. There will be more drought and heat, rain and snow, even cold extremes in some parts of the world, and less in others. There will be more wild storms in some places, cyclones and such, and less wildness in other places. Things will pretty much change all over the place as to how they have been. And some changes will become permanent, other's fluctuating.

And because of these weather disturbances, so the production of food will change; in some areas of the world severe famine and food shortages will occur, in other places pests and disease will predominate. You've seen all of these things already beginning to happen, and they are only going to happen more and become more intense.

And then come the physical Earth changes, not only from volcanic eruptions, but from the influence of large earthquakes.

Vulcanology:

28 September 2011

James: So what's happening to the Earth where the magma is? I mean how does it build up in pressure to come out?

Verna: It's a combination of internal Earth forces and external cosmic rays. They both interact to produce what might be likened to bringing a pot of water to the boil. The more internal pressure that builds, the stronger and more vigorous it boils escaping on the surface. The Earth has been relatively cool of late, meaning there's only a very light boiling going on, with most of the pent up pressure and energy able to be released through what has been witnessed. Some occasionally doing a lot of damage, other times, not so much. But the Earth has been going through a very quiet time of vulcanology. However, that's all soon to change as it warms up into one of its more active times. But as I said, not so active as in times gone by, but certainly more active than what's happened during this past two thousand years.

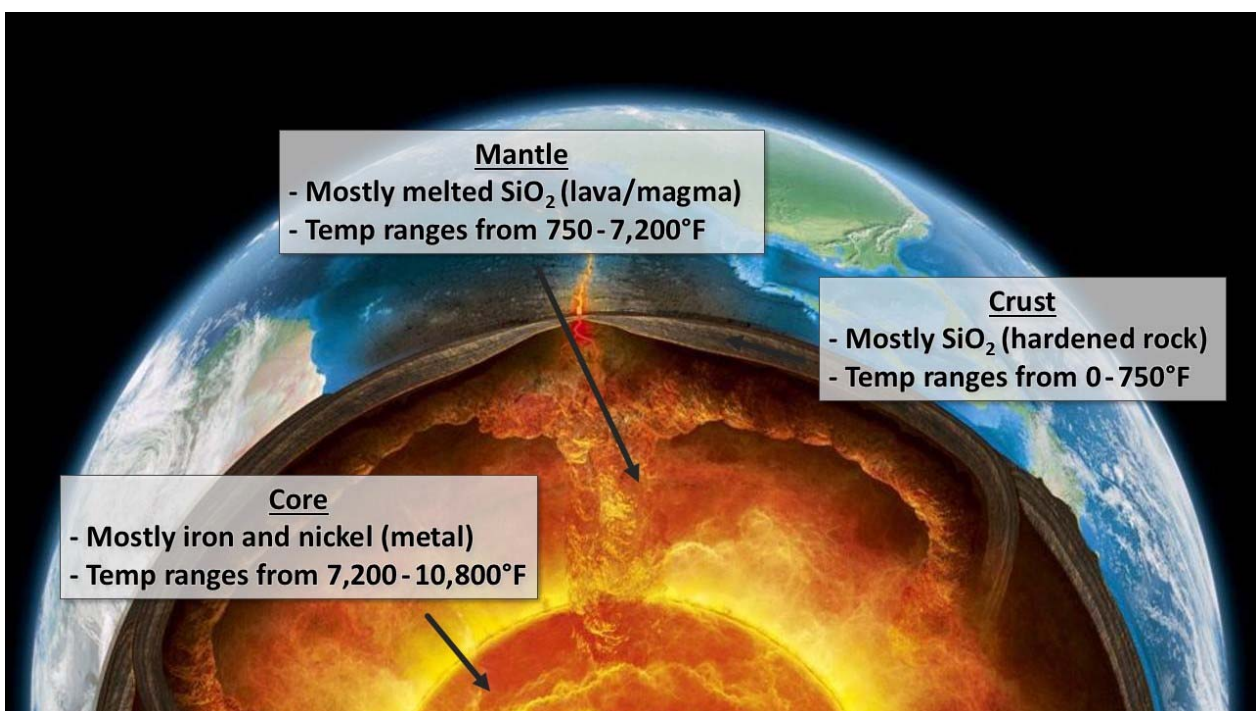
James: So the letting off steam, the increased boiling will keep happening for... how long?

Verna: It will keep building up during the next ten years, then it will plateau for the next twenty, then start to settle down. But within these years there will be times of greater and less intensity. You must remember that things happen relatively slowly on a geological time period. So this time will be but a hiccup in the great scheme of things, but enough to give humanity the experiences it requires to keep the pressure on it to change. You don't have to worry about it starting with a rush then petering out. The inner forces that are going to bring about all the structural crustal change will last for as long as they need to.

WEATHER EVENTS and EARTH CHANGES are CYCICAL:

The Richard Messages via James Reid: Celestial Spirit Richard 12 January 2013

There are many factors involved in the production of weather patterns on the planet. If you had information from a much longer period time than that available, you would see that such happenings are not uncommon or unusual. The scientists have developed a range of normal that is based on quite scanty data. So, while a relatively short-range view is taken of these elements, there must be varying opinions. The Earth is presently in a state of marked changes so there will be fluctuations and deviation from many 'normal' patterns. The present changes are much more related to what is happening deep within the planet than to manmade issues on the surface. However, people will always attempt to interpret any happening in the light of what is considered to be known and to use familiar terms.



Dr Willie Soon demolishes the extreme weather panic and other hysterical arguments

23 August 2019

https://www.youtube.com/watch?v=4JJ3yeiNjf4&fbclid=IwAR1K3lYwHmEX_UN2Ag7iyTrpRYp1FPUnIFhplnLZOwx6YhWZgu64ncE5zfs

Dr Willie Soon covers a range of issues including extreme weather, climate models, and possible alternative explanations for observed variation. Please see our party's handout on climate change at: <https://swarnabharat.in/Documents/5-p...> and also visit <http://swarnabharat.in/climate> See also the European Climate Declaration September 26, 2019 by 500 scientists and professionals including Sanjeev Sabhlok, our party's founder and leader: <https://clintel.nl/wp-content/uploads...>

Global Warming:

28 September 2011

Verna, is there really global warming, or is it something that seems to be happening but is being made up by certain people? I think I've asked you this question before –

That doesn't matter James, I'm happy to answer it again.

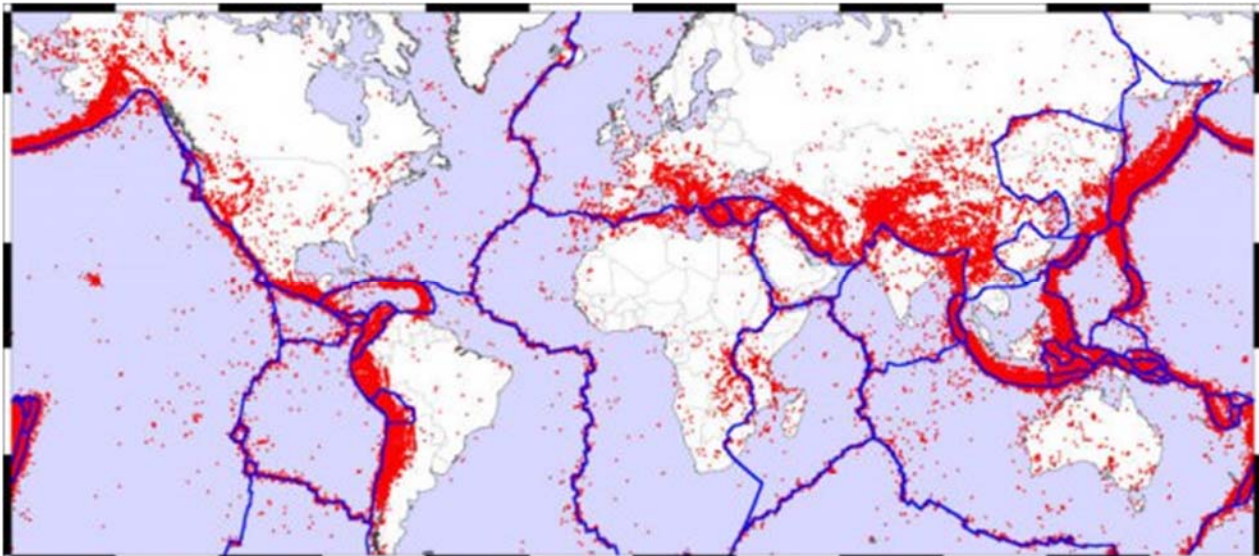
Verna, Nature Spirit: Yes, global warming is real, but it's not happening solely because of humanity's impact on the world. Humanity is only minimally affecting it. The world for the most part being able to absorb all you do that results in global warming. However it's the Earth itself that is heating up internally and because of external influences. And these will continue as I've told you. But all humanity does in regard to global warming will be of no account because of the overall changes that are going to take place.

Entire solar system is heating up! Scientists blame solar warming

<http://www.space.news/2015-10-06-entire-solar-system-is-heating-up-scientists-blame-solar-warming.html>

Tuesday, October 06, 2015 by [Chris Draper](#)

Many scientists suspect that the solar system has migrated to a region of the galaxy with high energy. We have the illusion that the sun is a nebulous ball of gas fixated in the sky that the rest of the solar system dances around. In reality, the sun is one star among many sitting on the outskirts of the Milky Way, hurtling through space at 72,000 kilometres per hour. Although the total amount of energy within the universe is conserved, pockets of energy in the Milky Way vary in intensity. The solar system may have rolled into one of these highly active regions.



Map of the Earth showing the relation between fault lines (blue) and zones of volcanic activity (red).

Credit: zmescience.com

EARTH'S INTERIOR!

www.gsjournal.net

<https://www.gsjournal.net/Science-Journals/Research%20Papers-Climate%20Studies/Download/7186?fbclid=IwAR0PNmdP61zCBYWrX2T3SdbL1jLvYe-t6N28LG3Vlv5rcFUi29rYOKLIJ6g>

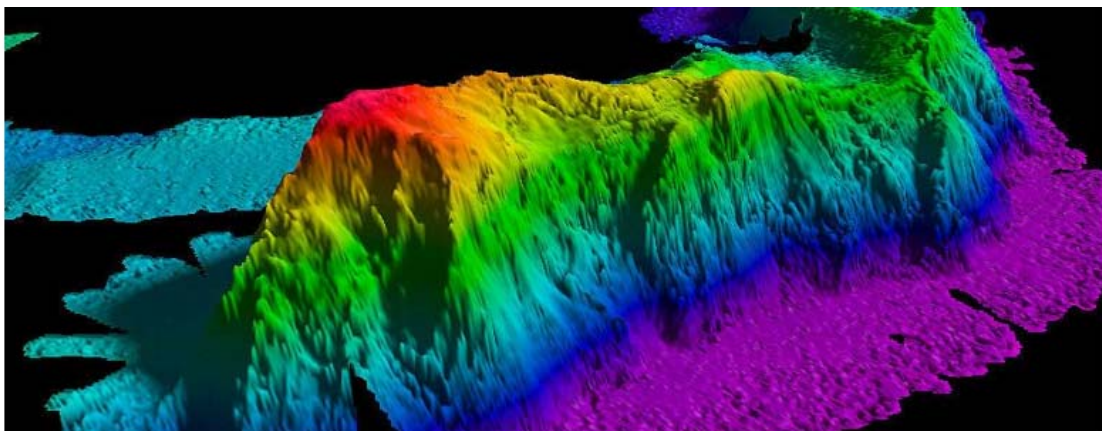
THE PSEUDOSCIENCE OF MAN-MADE CLIMATE CHANGE IS ABUNDANTLY OBVIOUS BASED ON CONCRETE SCIENTIFIC FACTS THAT ARE OBTAINED FROM EMPIRICAL EVIDENCE

Jamal Shrair wrote on 10 January 2020:

I have stated in my research paper that was published two years ago, the following:

The massive increase in the number of underwater volcanoes, that were detected in the last 26 years and also the formation of many new islands around the globe have exposed the pseudoscience of man-made climate change. It is the increase of extraterrestrial energy at the Earth's interior which is the fundamental cause for the climate change and temperature change of the oceans. Moreover, the increase of extraterrestrial energy at the Earth's interior is also the reason for the increase in earthquakes and volcanic eruptions. When the optimum energy level will be reached, the geomagnetic reversal will take place accompanied by massive geological upheaval. This has happened many times throughout Earth's history.

Jamal S. Shrair, Founder of the Helical Universe and Researcher of Nuclear Fusion and Fundamental Physics at Shrair Fusion www.helical-universe.info He has a B.Sc. in Electrical Engineering from Canada's Queen's University and M.Sc. in experimental and particle physics from the Eötvös Loránd University of Science in Budapest, Hungary. His M.Sc. thesis project was an investigation of cosmic muons using a Cherenkov detector. In his post-graduate studies, he joined the faculty of electrical engineering and informatics at the Budapest University of Technology and Economics, where he studied surface physics and electron devices. The title of his thesis project is "The application of Nano-porous Silicon Layers for Efficient Gas Sensors".



A map of a seamount in the Arctic Ocean created by NOAA's Office of Coast Survey by gathering data with a multibeam echo sounder.

Australia's changing climate – CSIRO

<https://www.csiro.au/en/Research/OandA/Areas/Assessing-our-climate/State-of-the-Climate-2018/Australias-changing-climate>

State of the Climate 2018

The Bureau of Meteorology and CSIRO play an important role in monitoring, archiving, analysing, interpreting and communicating Australia's observed and future weather and climate. Australia's weather and climate continues to change in response to a warming global climate.

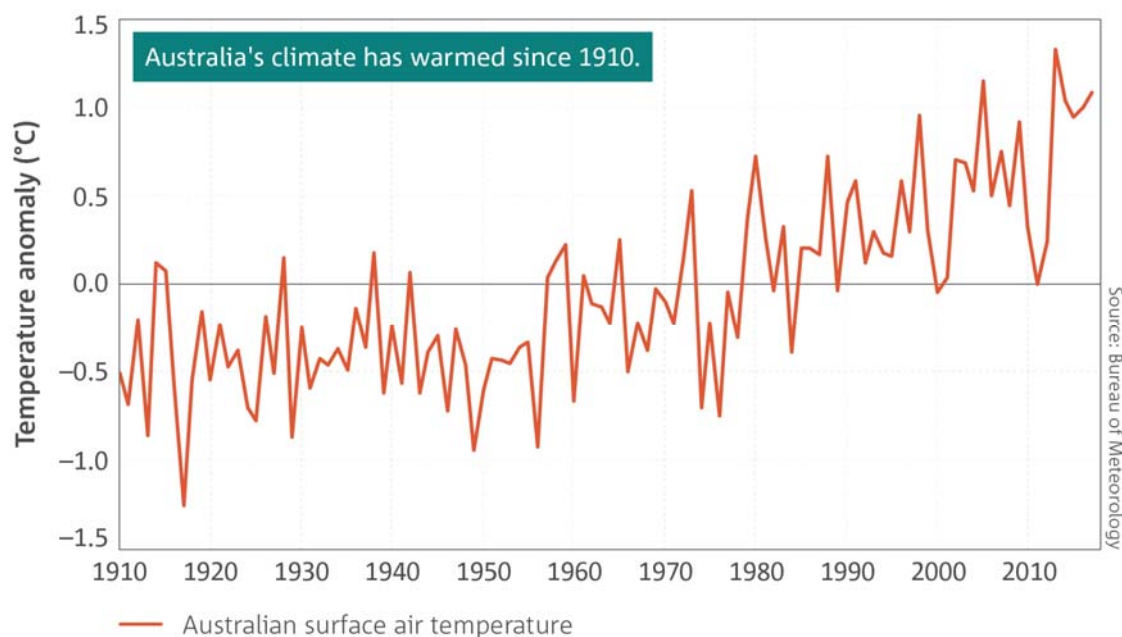
Temperature

Anomalies in annual temperature over land in the Australian region. Anomalies are the departures from the 1961–1990 standard averaging period.

- Australia's climate has warmed by just over 1 °C since 1910, leading to an increase in the frequency of extreme heat events.

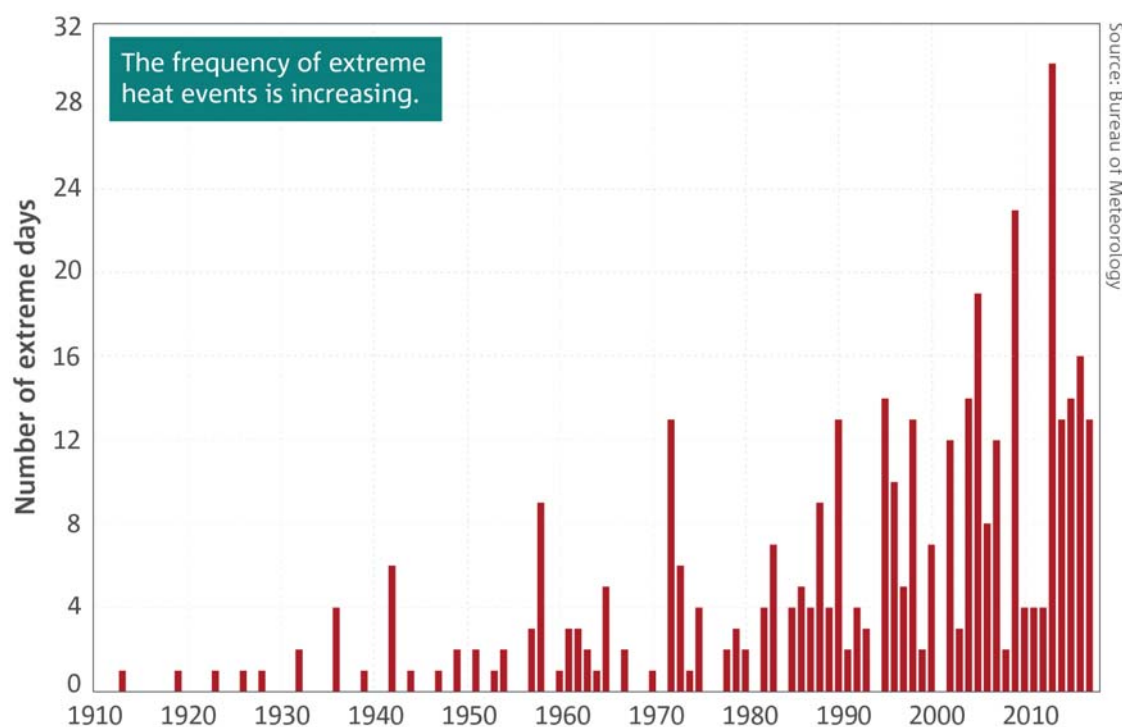
Australia's weather and climate continues to change in response to a warming global climate. Australia has warmed by just over 1 °C since 1910, with most warming since 1950. This warming has seen an increase in the frequency of extreme heat events and increased the severity of drought conditions during periods of below-average rainfall. Eight of Australia's top ten warmest years on record have occurred since 2005.

Number of days each year where the Australian area-averaged daily mean temperature is extreme. Extreme days are those above the 99th percentile of each month from the years 1910–2017. These extreme daily events typically occur over a large area, with generally more than 40 per cent of Australia experiencing temperatures in the warmest 10 per cent for that month.



Anomalies in annual temperature over land in the Australian region. Anomalies are the departures from the 1961–1990 standard averaging period.

The year-to-year changes in Australia's climate are mostly associated with natural climate variability such as El Niño and La Niña in the tropical Pacific Ocean and phases of the Indian Ocean Dipole in the Indian Ocean. This natural variability now occurs on top of the warming trend, which can modify the impact of these natural drivers on the Australian climate.



Number of days each year where the Australian area-averaged daily mean temperature is extreme. Extreme days are those above the 99th percentile of each month from the years 1910–2017. These extreme daily events typically occur over a large area, with generally more than 40 per cent of Australia experiencing temperatures in the warmest 10 per cent for that month.

Increases in temperature are observed across Australia in all seasons with both day and night-time temperatures showing warming. The shift to a warmer climate in Australia is accompanied by more extreme daily heat events. Record-warm monthly and seasonal temperatures have been observed in recent years, made more likely by climate change.

Examining the shift in the distributions of monthly day and night-time temperature shows that very high monthly maximum temperatures that occurred around 2 per cent of the time in the past (1951–1980) now occur around 12 per cent of the time (2003–2017). Very warm monthly minimum, or night-time, temperatures that occurred around 2 per cent of the time in the past (1951–1980) now also occur around 12 per cent of the time (2003–2017). This upward shift in the distributions of temperature has occurred across all seasons, with the largest change in spring.

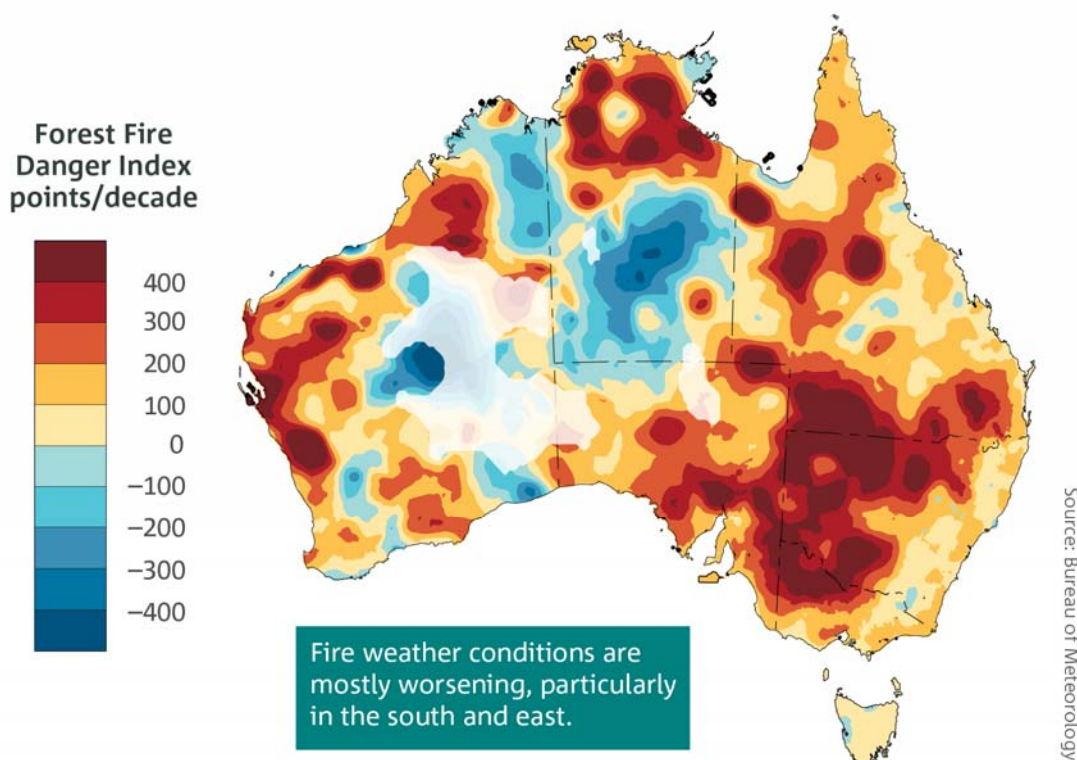
Trends from 1978 to 2017 in the annual (July to June) sum of the daily Forest Fire Danger Index—an indicator of the severity of fire weather conditions. Positive trends, shown in the yellow to red colours, are indicative of an increasing length and intensity of the fire weather season. A trend of 300 FFDI points per decade is equivalent to an average trend of 30 FFDI points per year. Areas where there are sparse data coverage such as central parts of Western Australia are faded.

Fire weather

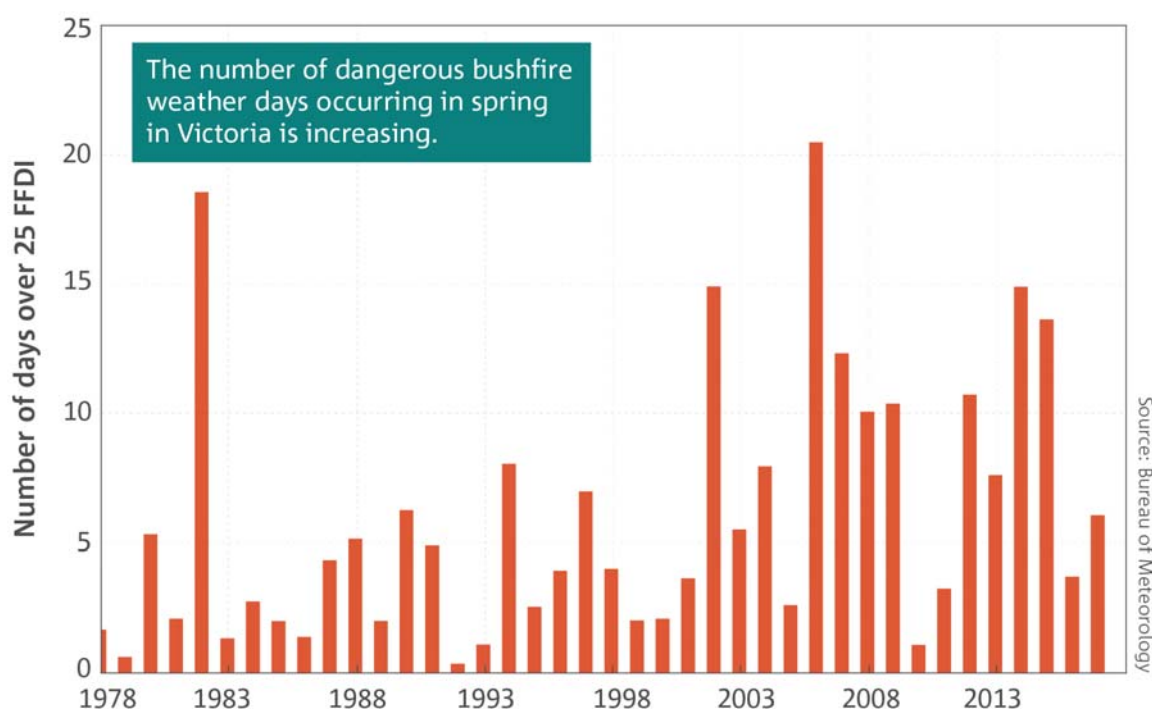
- There has been a long-term increase in extreme fire weather and in the length of the fire season across large parts of Australia since the 1950s.

Fire weather is largely monitored in Australia using the Forest Fire Danger Index (FFDI). This index estimates the fire danger on a given day based on observations of temperature, rainfall, humidity and wind speed. The annual 90th percentile of daily FFDI (i.e., the most extreme 10 per cent of fire weather days) has increased in recent decades across many regions of Australia, especially in southern and eastern Australia. There has been an associated increase in the length of the fire weather season. Climate change, including increasing temperatures, is contributing to these changes. Considerable year-to-year variability also occurs, with La Niña years, for example 2010–2011 and 1999–2000, generally associated with a lower number of days with high FFDI values.

Area average of the number of days with FFDI greater than 25 (very high fire danger) in Victoria in spring for the years starting in July (1978–2017). Although there is considerable inter-annual variability in the index, there is also a clear trend in more recent decades towards a greater number of very high fire weather days in spring.



Trends from 1978 to 2017 in the annual (July to June) sum of the daily Forest Fire Danger Index—an indicator of the severity of fire weather conditions. Positive trends, shown in the yellow to red colours, are indicative of an increasing length and intensity of the fire weather season. A trend of 300 FFDI points per decade is equivalent to an average trend of 30 FFDI points per year. Areas where there are sparse data coverage such as central parts of Western Australia are faded.



Area average of the number of days with FFDI greater than 25 (very high fire danger) in Victoria in spring for the years starting in July (1978–2017). Although there is considerable inter-annual variability in the index, there is also a clear trend in more recent decades towards a greater number of very high fire weather days in spring.

Rainfall

- April to October rainfall across south-eastern and southwestern Australia has declined.
- Rainfall has increased across parts of northern Australia since the 1970s.

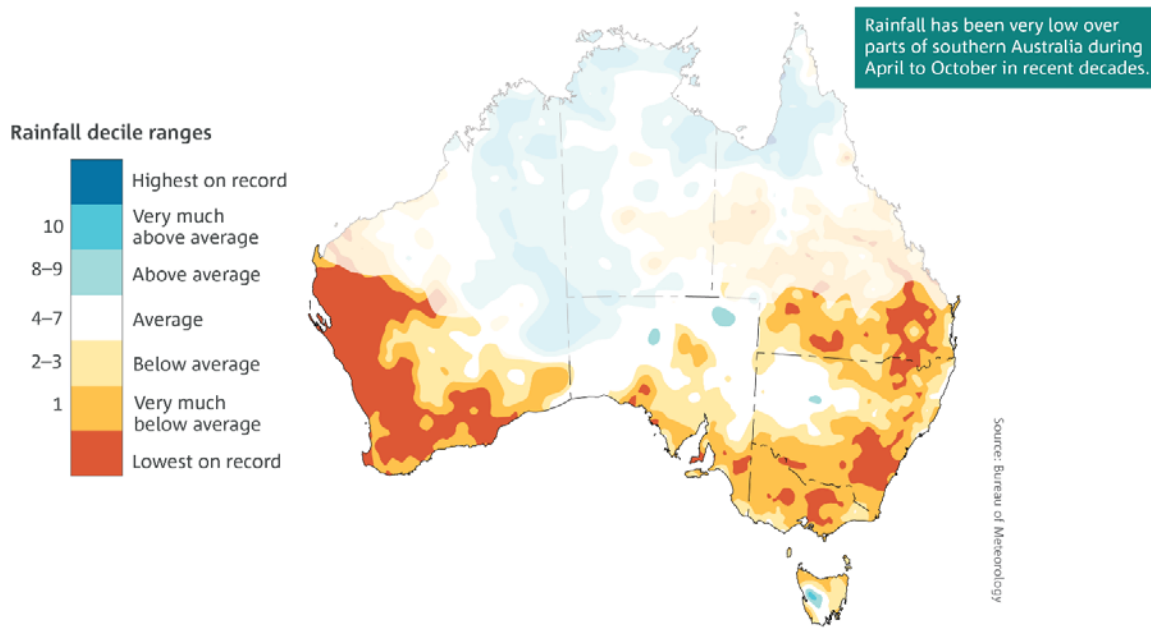
Australian rainfall is highly variable and is strongly influenced by phenomena such as El Niño, La Niña, and the Indian Ocean Dipole. Despite this large natural variability, underlying long-term trends are evident in some regions. There has been a shift towards drier conditions across southwestern and south-eastern Australia during April to October. Northern Australia has been wetter across all seasons, but especially in the northwest during the tropical wet season.

Year-to-year variability occurs against the background drying trend across much of the southern half of Australia (south of 26° S). In 17 of the last 20 April to October periods since 1999, southern Australia has had below-average rainfall. Recent years with above-average rainfall in this region were generally associated with drivers of higher than usual rainfall across Australia, such as a strong negative Indian Ocean Dipole in 2016, and La Niña in 2010.

April to October rainfall deciles for the last 20 years (1999–2018). A decile map shows where rainfall is above average, average or below average for the recent period, in comparison with the entire rainfall record from 1900. Areas across northern and central Australia that receive less than 40 per cent of their annual rainfall during April to October have been faded.

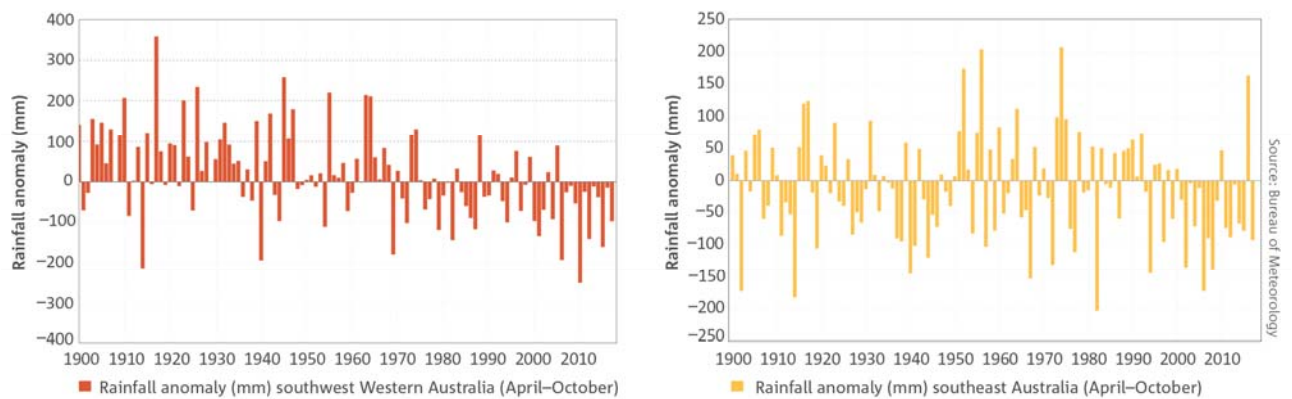
Anomalies of April to October rainfall for southwestern (southwest of the line joining the points 30° S, 115° E and 35° S, 120° E) and south-eastern (south of 33° S, east of 135° E inclusive) Australia. Anomalies are calculated with respect to 1961 to 1990 averages.

The drying in recent decades across southern Australia is the most sustained large-scale change in rainfall since national records began in 1900. The drying trend has been most evident in the southwestern and south-eastern corners of the country. The drying trend is particularly strong between May to July over southwest Western Australia, with rainfall since 1970 around 20 per cent less than the average from 1900 to 1969. Since 1999, this reduction has increased to around 26 per cent. For the southeast of the continent, April to October rainfall for the period 1999 to 2018 has decreased by around 11 per cent when compared to the 1900 to 1998 period. This period encompasses the Millennium Drought, which saw low annual rainfall totals across the region from 1997 to 2010.



April to October rainfall deciles for the last 20 years (1999–2018). A decile map shows where rainfall is above average, average or below average for the recent period, in comparison with the entire rainfall record from 1900. Areas across northern and central Australia that receive less than 40 per cent of their annual rainfall during April to October have been faded.

Anomalies of April to October rainfall for southwestern (southwest of the line joining the points 30° S, 115° E



and 35° S, 120° E) and south-eastern (south of 33° S, east of 135° E inclusive) Australia. Anomalies are calculated with respect to 1961 to 1990 averages.

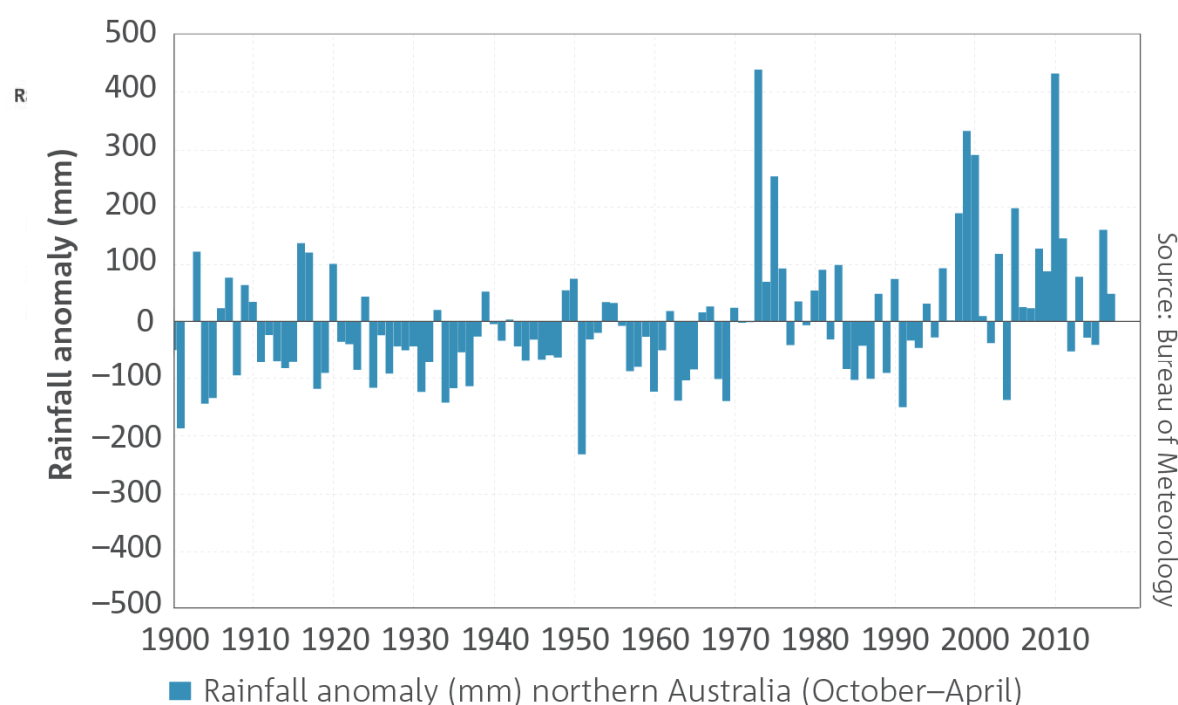
This decrease, at an agriculturally and hydrologically important time of the year, is linked with a trend towards higher mean sea level pressure in the region and a shift in large-scale weather patterns—more

highs and fewer lows. This increase in mean sea level pressure across southern latitudes is a known response to global warming. There has been a reduction in the number of cold fronts impacting the southwest, and a decrease in the incidence and intensity of weather systems known as cut-off lows in the southeast regions of Australia. Cut-off lows bring the majority of rainfall and the most intense rainfalls in some regions of eastern Victoria and Tasmania.

Northern wet season (October–April) rainfall deciles for the last 20 years (1998–99 to 2017–18). A decile map shows where rainfall is above average, average or below average for the recent period, in comparison with the entire national rainfall record from 1900.

Anomalies of October to April rainfall for northern Australia (north of 26° S inclusive). Anomalies are calculated with respect to the 1961 to 1990 average.

Northern wet season (October–April) rainfall deciles for the last 20 years (1998–99 to 2017–18). A decile map shows where rainfall is above average, average or below average for the recent period, in comparison with the entire national rainfall record from 1900.



Anomalies of October to April rainfall for northern Australia (north of 26° S inclusive). Anomalies are calculated with respect to the 1961 to 1990 average.

Heavy rainfall

- There is evidence that some rainfall extremes are becoming more intense.

Although the range of natural variability in heavy rainfall is very large, there is evidence from observed weather station records that a higher proportion of total annual rainfall in recent decades has come from heavy rain days.

As the climate warms, heavy rainfall is expected to become more intense, based on the physical relationship between temperature and the water-holding capacity of the atmosphere. For heavy rain days, total rainfall is expected to increase by around 7 per cent per degree of warming. For short-duration, hourly, extreme rainfall events, observations in Australia generally show a larger than 7 per cent increase. Short-duration rain extremes are often associated with flash flooding.

Compound events

While scientists often report on changes in individual climate variables, such as rainfall, historically significant weather and climate events are often the result of the combined influence of extremes in multiple variables occurring simultaneously. These events are commonly the most impactful and hazardous, and planning for such events is a major component of disaster risk reduction and resilience.

Compound extreme events can occur in various ways. This includes an extreme storm surge, combined with extreme rainfall, leading to extreme coastal inundation. Similarly, extreme rainfall and extreme high wind events along the New South Wales coast are often associated with the simultaneous occurrence of an intense low pressure system, cold front and thunderstorms.

Compound extreme events can also describe the confluence of climate and weather extremes of varying timescales, such as a drought period intersecting with a prolonged heatwave, or record high daily temperatures—an occurrence which typically results in large impacts on agriculture, human health, fire weather and infrastructure.

Climate change can have a significant influence on the frequency, magnitude and impact of some types of compound events.

For example, the confluence of background warming trends, background drying trends and natural variability saw extreme heat and low rainfall across Tasmania during the spring, summer and autumn of 2015–2016. October 2015 saw the third highest mean monthly maximum temperature on record for the State, record low monthly rainfall and record high fire danger. These conditions rapidly transitioned to record atmospheric moisture and heavy rainfall in June. Tasmania experienced significant impacts from these events, including drought and fires, followed by flooding.

There is also a trend in some regions towards an increasing number of days when high fire danger ratings are combined with conditions that allow bushfires to generate thunderstorms. This can lead to extremely dangerous fire conditions as observed for the Canberra (2003) and Black Saturday (2009) fires, including generating additional fires from lightning strikes.

As climate change continues, the combination of increases in heavy rainfall and rising sea levels means that coastal and estuarine environments may have an increase in flood risk from multiple causes.

Projecting the occurrence and severity of future compound extreme events is a significant scientific challenge, as well as a very important one for future climate adaptation.

Streamflow (river flow)

- Streamflow has decreased across southern Australia since the 1970s.
- Streamflow has increased in northern Australia, since the 1970s, in places where rainfall has increased.

The observed long-term reduction in rainfall across southern Australia has led to even greater reductions in stream-flows. For example, the mean annual streamflow into Perth water storages has dropped from 338 GL during the period 1911–1974 to 134 GL during the subsequent years from 1975–2017. During this latter period there is a continuing decline to a mean annual inflow of 47 GL during the last six years.

Declines in streamflow have also been observed in four drainage divisions: the Murray–Darling Basin, South East Coast (Victoria) and South East Coast (New South Wales) (which include Sydney and Melbourne), and the South Australian Gulf (which includes Adelaide). In each of these drainage divisions between two thirds and three quarters of streamflow records show a declining trend since the 1970s.

In the Tanami–Timor Sea Coast drainage division in Northern Australia, which includes Darwin and covers much of the Northern Territory, there is an increasing trend in mean annual flows at more than half of the gauging stations, following an increase in rainfall since the 1970s.

Tropical cyclones

- There has been a decrease in the number of tropical cyclones observed in the Australian region since 1982.

Tropical cyclone activity in the Australian region, which is specified as the ocean and land areas from 90° E to 160° E in the southern hemisphere, has large variability from year-to-year, due to the influence of naturally occurring climate drivers. For example, the number of tropical cyclones in the Australian region generally declines with El Niño and increases with La Niña.

Observations since 1982 indicate a downward trend in the number of tropical cyclones in the Australian region.

In contrast to the number of tropical cyclones, cyclone intensity is harder to observe, so it is not currently possible to quantify any trends with a substantial degree of confidence.

Snow

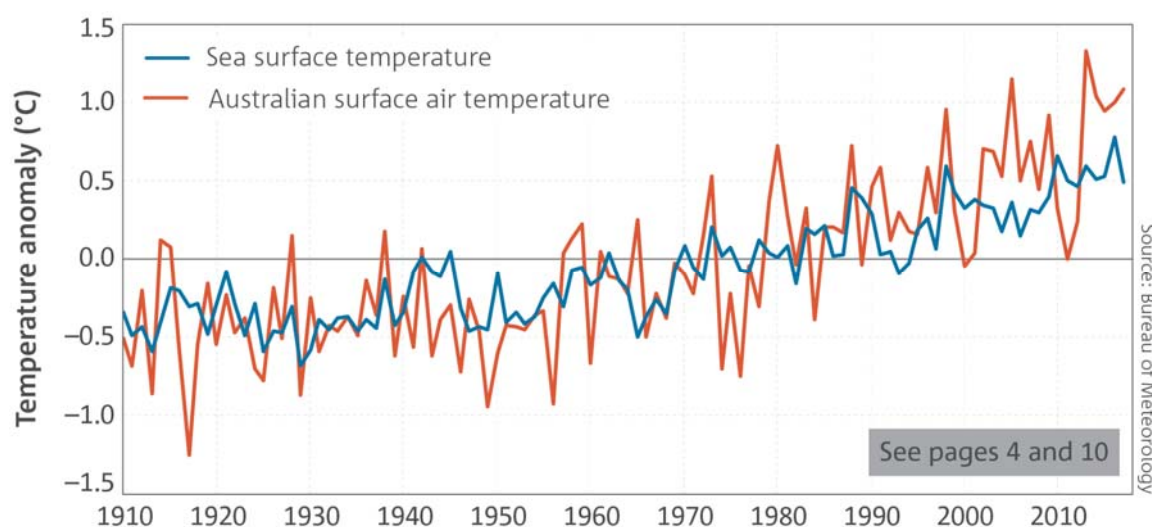
- A downward trend in snow depth has been widely observed for Australian alpine regions since the late 1950s.

Downward trends in snow depth have been observed for Australian alpine regions since the late 1950s, with largest declines observed during spring. Downward trends in the spatial extent of snow cover in Australia have also been observed. Snow depth is closely related to maximum temperatures, and the observed declines are associated with the long-term trend of increasing temperatures.

Key points

Australia

- Australia's climate has warmed by just over 1 °C since 1910, leading to an increase in the frequency of extreme heat events.
- Oceans around Australia have warmed by around 1 °C since 1910, contributing to longer and more frequent marine heatwaves.
- Sea levels are rising around Australia, increasing the risk of inundation.
- The oceans around Australia are acidifying (the pH is decreasing).
- April to October rainfall has decreased in the southwest of Australia. Across the same region May–July rainfall has seen the largest decrease, by around 20 per cent since 1970.
- There has been a decline of around 11 per cent in April–October rainfall in the southeast of Australia since the late 1990s.
- Rainfall has increased across parts of northern Australia since the 1970s.
- Streamflow has decreased across southern Australia. Streamflow has increased in northern Australia where rainfall has increased.
- There has been a long-term increase in extreme fire weather, and in the length of the fire season, across large parts of Australia.



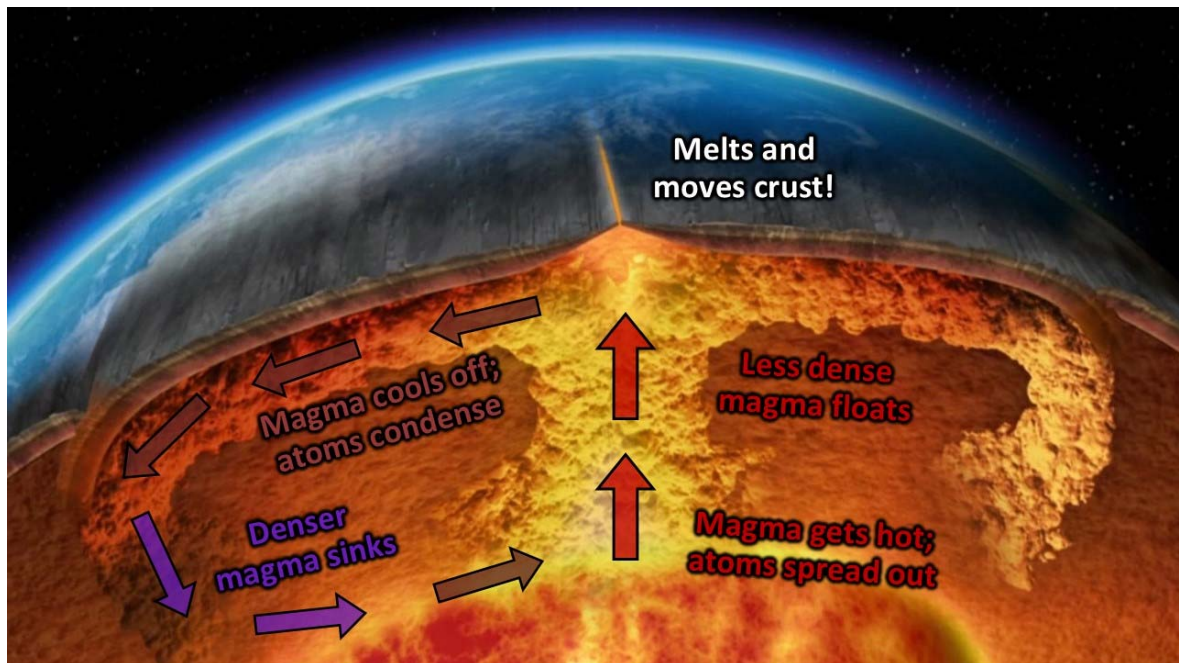
Global

- Concentrations of all the major long-lived greenhouse gases in the atmosphere continue to increase, with carbon dioxide (CO₂) concentrations rising above 400 ppm since 2016 and the CO₂ equivalent (CO₂-e) of all gases reaching 500 ppm for the first time in at least 800,000 years.
- Emissions from fossil fuels continue to increase and are the main contributor to the observed growth in atmospheric CO₂.
- The world's oceans, especially in the southern hemisphere, are taking up more than 90 per cent of the extra energy stored by the planet as a result of enhanced greenhouse gas concentrations.
- Global sea level has risen by over 20 cm since 1880, and the rate has been accelerating in recent decades.
- Globally averaged air temperature has warmed by over 1 °C since records began in 1850, and each of the last four decades has been warmer than the previous one.

Future

Australia is projected to experience:

- Further increases in sea and air temperatures, with more hot days and marine heatwaves, and fewer cool extremes.
- Further sea level rise and ocean acidification.
- Decreases in rainfall across southern Australia with more time in drought, but an increase in intense heavy rainfall throughout Australia.



<http://www.pascashealth.com/index.php/library.html>

Library Downloads – Pascas Papers

All papers may be freely shared. The fortnightly mailouts are free to all, to be added into the mailout list, kindly provide your email address. info@pascashealth.com

WWW.PASCAHEALTH.COM Library Downloads then to Pascas Introduction Notes

PDF downloads:

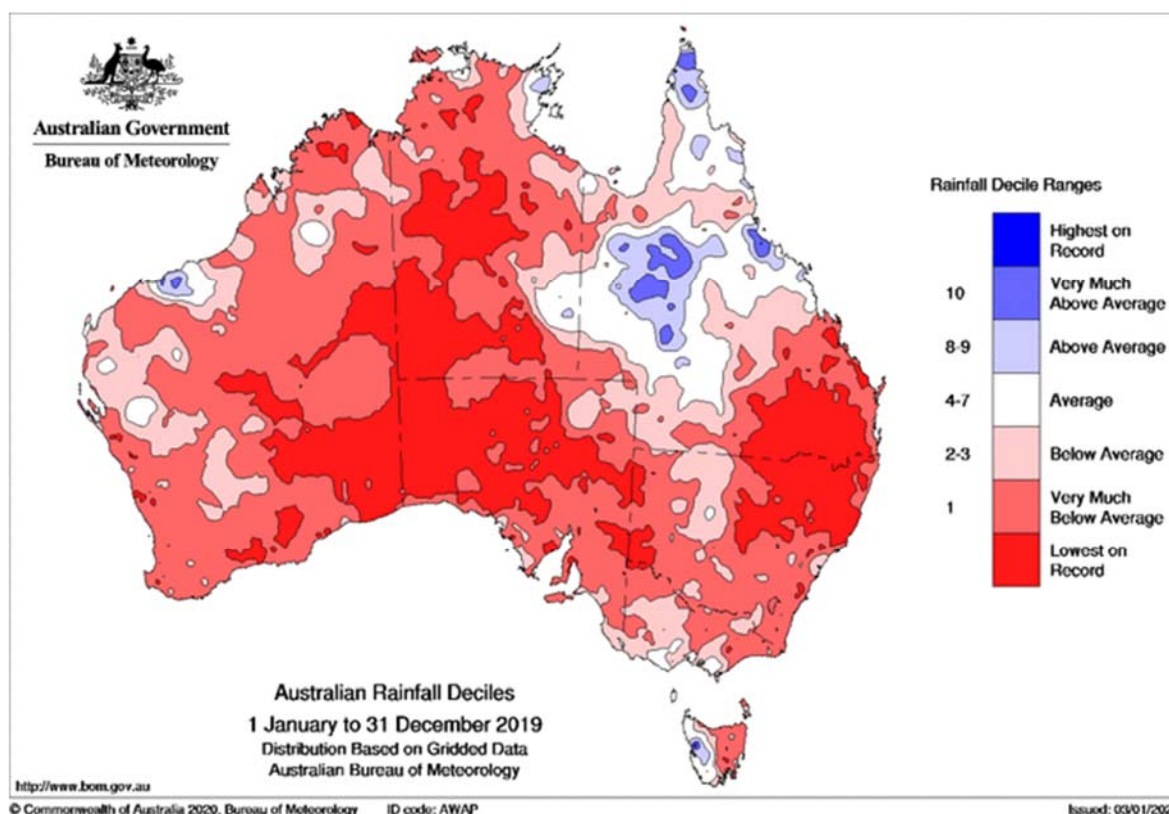
- Pascas Care Letters Environmental Collaboration Awareness
- Pascas Care Letters Environmental Collaboration Beginning
- Pascas Care Letters Environmental Collaboration Crisis 21st Century
- Pascas Care Letters Environmental Collaboration Developed Civilisations
- Pascas Care Letters Spiritual Evolution and Environmental Changes

Australia's climate in 2019

<http://www.bom.gov.au/climate/current/annual/aus/>

9 January 2020

- Australia's warmest year on record, with the annual national mean temperature 1.52 °C above average
- Both mean annual maximum and minimum temperatures above average for all States and the Northern Territory
- Annual national mean maximum temperature warmest on record (2.09 °C above average)
- Widespread warmth throughout the year; January, February, March, April, July, October, and December all amongst the ten warmest on record for Australian mean temperature for their respective months
- Significant heatwaves in January and in December
- Australia's driest year on record
- Nationally-averaged rainfall 40% below average for the year at 277.6 mm
- Rainfall below average for most of Australia
- Rainfall above average for parts of Queensland's northwest and northern tropics
- Much of Australia affected by drought, which was especially severe in New South Wales and southern Queensland
- Widespread severe fire weather throughout the year; national annual accumulated Forest Fire Danger Index highest since 1950, when national records began
- One of the strongest positive Indian Ocean Dipole events on record; El Niño–Southern Oscillation neutral throughout the year



Australia's Bushfires Have Burned an Area the Size of Vermont and New Hampshire Combined.

3 January 2020

<https://time.com/5758186/australia-bushfire-size/>

[Bushfires raging across Australia](#) have burned more than 12 million acres—an area approximately the size of the U.S. states of Vermont and New Hampshire combined. The smoke from the blazes in the southwest of the country is visible from space, and it is spreading so far that it is causing haze in New Zealand more 1,000 miles away.

The fire season in Australia is far from over, and already it is shaping up to be one of the most intense in the country's history.

“The intensity, the scale, the number, the geographical range, the fact that they're occurring simultaneously, and the sorts of environments that are burning are all extraordinary,” David Bowman, a professor of pyro-geography and fire science and the director of the Fire Centre Research Hub at the University of Tasmania, tells TIME.

“We're in the middle of a war situation...mass evacuations, the involvement of the military, hugely exhausted firefighting campaigns, it's difficult to explain.”

The bushfires have caused at least 19 deaths and dozens of people are missing. Hundreds of homes have been destroyed. The military has deployed ships and aircraft to bring supplies to towns ravaged by the fires, and to evacuate residents who were cut off by the flames.

Starting Saturday, conditions are expected to worsen again, with hot weather that will likely intensify the fires.

Here's what to know about the crisis that's unfolding in Australia.

How extensive are the fires?

About 12.35 million acres (5 million hectares) of land has burned across Australia, according to the Associated Press. By comparison, wildfires in California in 2018—which the California Department of Forestry & Fire Protection says was “...the deadliest and most destructive wildfire season on record” in the state—burned an area of less than 2 million acres (0.8 million hectares).

A map maintained by researchers show large areas of Australia were burned in 2019, with much of the damage in the last month.

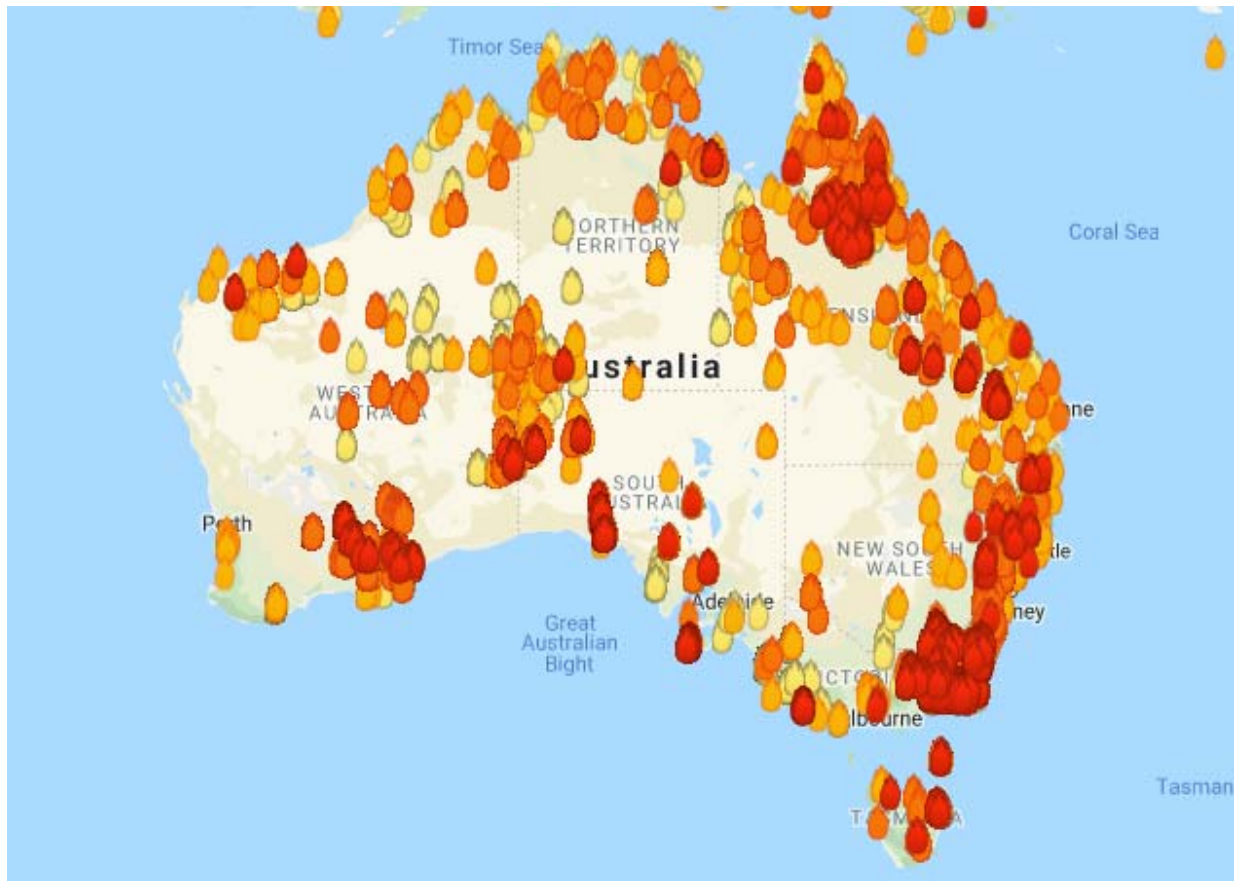
Bushfire risk is currently the highest in New South Wales and Victoria, the most populous states, during Australia's summer, which runs from December to February. But a state of emergency had already been declared in New South Wales in mid-November over the fires this season. In southern Australia and Tasmania, fire season continues into the fall (autumn).

Owen Price, an Associate Professor at the Centre for Environmental Risk Management of Bushfire at the University of Wollongong, tells TIME that approximately 30% of the forest in New South Wales has been burned, but that may increase to around 50% this weekend with the weather forecast.

What's happening?

At least 200 fires were burning in Australia as of Friday 3 January 2020. This week alone, 10 deaths have been confirmed in Victoria and New South Wales.

A fire tracker map maintained by researchers in Western Australia shows fires burning across the country, with fires raging on the southeast coast of Victoria.



Wildfires burning across Australia on Jan. 3, 2020.

Landgate's MyFireWatch

Victoria Premier Daniel Andrews on Thursday declared a state of disaster for several areas, and authorities are calling for the evacuation of large areas of the state. Andrews said on his Twitter account that 28 residents of the state are missing.

2019 California wildfires

https://en.wikipedia.org/wiki/2019_California_wildfires

The 2019 wildfire season is the latest fire season in California, United States. As of December 22, 2019, over 7,860 fires have been recorded according to Cal Fire and the US Forest Service, totalling an estimated of 259,823 acres (105,147 hectares) of burned land. Although the 2019 fire season had been relatively quiet in California through mid-September as compared to past years, October through December was still expected to have the greatest fire potential as the Diablo and Santa Ana winds pick up.

In late October, the Kincade Fire became the largest fire of the year, burning 77,758 acres (31,468 ha) in Sonoma County by November 6.

Massive pre-emptive public safety power shutoff events have been controversial. Pacific Gas & Electric, Southern California Edison and San Diego Gas & Electric had pre-emptively shut off power to 800,000 electric customers to reduce the risk of wildfires by preventing electrical arcing in high winds from their above-ground power lines. While large areas were without power for days, people in fire danger areas had trouble getting information, and critical life support equipment would not work without backup power.

Note: The climate variations



Russia's Government announces plan to 'use the advantages' of climate change

<https://mobile.abc.net.au/news/2020-01-06/russia-announces-use-of-advantages-of-climate-change-in-plan/11843462>

5 January 2020



Russia's President Vladimir Putin doubts climate change is primarily caused by human activity.

Reuters: Maxim Shemetov

Russia's Government has announced a plan to adapt their economy and population to climate change but also to "use the advantages" of warmer temperatures to reduce its population's vulnerability.

Key points:

- The report states warmer temperatures could lead to new trade and navigation opportunities in the Arctic Ocean
- The Government report notes Russia is warming on average 2.5 times quicker than the rest of the planet
- Multiple preventative measures are listed, including dam building and drought-resistant crops

The new 30-point report was published on the Government's official website on Saturday (local time), outlining a plan of action on opportunities and risks climate change posed to the country's industry, society, environment and wildlife.

The two-year 'first stage' plan noted [Russia was warming 2.5 times quicker than the planet on average](#).

Government officials plan to start implementing economic and social measures to reduce the vulnerability of their population, despite President Vladimir Putin's denial of human activity as a contributing cause.

The report lists multiple preventative measures such as dam building and switching agriculture to more drought-resistant crops as reported by Agence France-Presse (AFP).

The Government also said in the report it would prepare for crisis measures such as evacuation in case of disaster and emergency vaccinations.

The report also highlighted the importance of ensuring new educational material was provided to teach climate change in schools.



[Polar bears have been forced onto land to look for food due to the impacts of climate change.](#)

[Maxim Dyominov: WWF Russia](#)

"The plan said climate change poses risks to public health, endangers permafrost, and increases the likelihood of infections and natural disasters. It also can lead to species being pushed out of

their usual habitats," according to the Guardian.

However, the report also outlined potential benefits arising with warming temperatures, including more opportunities for trade and navigation in the Arctic Ocean as the ice melted.

The benefits could also include an expansion of agricultural areas and less energy use in cold regions according to the report.

'Processes in the universe'

Mr Putin publicly doubted in his annual end-of-year news conference last year that global warming had human-made origins, saying: "Nobody knows the origins of global climate change."



[Fires rage across the Arctic](#)

[New satellite images show enormous wildfires spreading across swathes of the Arctic Circle.](#)

He also repeatedly denied the scientific consensus that climate change was primarily caused by emissions deriving from human activity, blaming it last month on some "processes in the universe", according to the

Guardian.

However, as Russia is known for its vast Arctic regions and infrastructure built over permafrost, it is one of the most vulnerable countries to climate change.

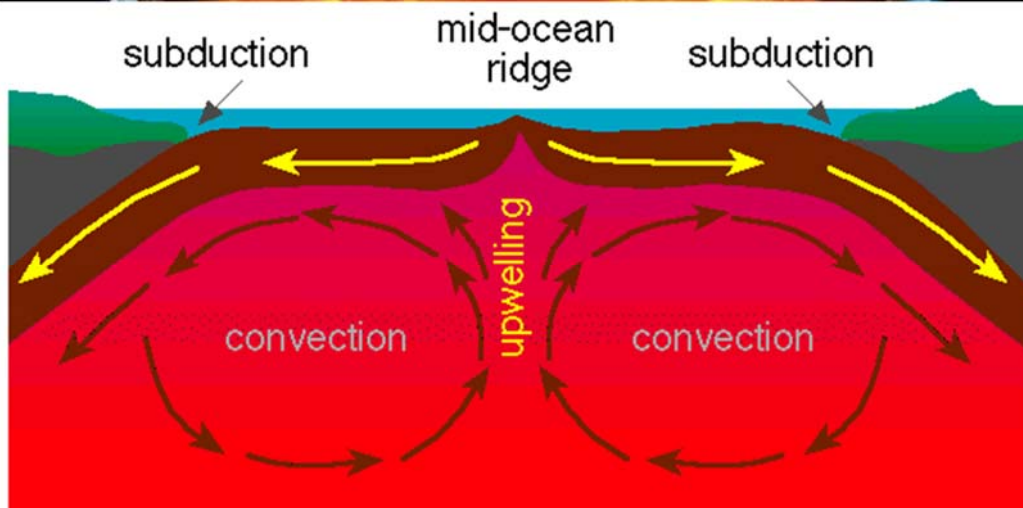
Amid some of the country's worst disasters were [last year's bushfires burning across more than 3 million hectares in Siberia.](#)

Also, the loss of Arctic sea ice, which is a threat to polar bears, became apparent last year when a remote Russian island was invaded by the animals.

[Polar bears are increasingly being forced onto land](#) to look for food.

GLOBAL WARMING is not UNIFORM

Consider that the increased rotation of the Earth's inner iron core is not creating a uniform increase in pressure and temperature on the surface of the planet. Thus ocean, land and air temperature increases can be twice the rate, or thereabouts, in places whereas other locations may be cooling. The agitation in the mixing bowl is not mixing the molten lava below the surface uniformly. Earth events will be typically more extreme at the points where the upwelling from the core are focused during this cyclical event. Humanity is to learn how to collaborate with nature – not control it!



GREAT U-TURN, THE CHANGE and the AVONAL AGE:

Monday, 24 December 2018

Nanna Beth – 3rd Celestial Heaven: The ‘Great U-Turn’ is what is happening now, it being the overall description denoting humanity turning away from following and advancing the Rebellion and its evilness as seen by living increasingly in a truth-denying state, to wanting to live true, to love truth, to be truth-accepting, all of which comes about ultimately by doing your Healing, as you become the living truth as it’s revealed to you; and also by people, like yourself John, who are currently more intent on understanding about it on an intellectual level. Both are needed, everyone who wants to embark upon their own personal U-Turn and the collective one of humanity, needs to understand a certain amount of what it’s all about with their mind as they work to bring the truths to light within themselves through their Healing. So anything to do with ‘reversing’ the Rebellion and Default is all part of the U-Turn. And it starts in a very small way within the individual, as it has already with the whole of humanity, being reflected by yourself and the others of your small band, who are wanting to live it and have accepted and believe it’s happening.



The Change, as such, is the same thing really. However, technically The Change begins with the dawning of the new Spiritual Age – the Avonal Age. The Change, as I was referring to it yesterday, was to highlight that once the Avonal Age begins in earnest, EVERYTHING will change. So currently, even though the Change and U-Turn have ‘begun’, it’s early days. Just the ‘scouts’ going out in all directions in preparation for the ‘main event’. So technically we can’t say The Change has begun, whereas in time when Mary and Jesus’ age ends and the Avonal Age begins, then we can say it has begun. However, we can say the U-Turn has begun, it being a more vague term and not a technical definition.

THE CHANGE

Also, James has written about The Change in his Sage novels in reference to all I have said above and also the Earth Changes, including the Pole Shift. However, the Pole Shift, were it to come during the Avonal Age, would then be part of The Change, The Change being the whole 1,000 years. It’s going to take the whole 1,000 years to implement on the parent to child level the necessary Changes so as to ensure that the effects of the Rebellion will truly come to an end, with that “end” still going beyond the Avonal Age to complete. So the Pole Shift is just a physical phenomenon, and certainly of itself it will cause great change, but it doesn’t of itself affect any spiritual change against the Rebellion and Default, and in the past it has helped humanity go deeper into its wrongness.

So the real Change I’m talking about is spiritual and involves the ending of humanity’s truth denial. That’s the most important part, to help people see they are living against the Truth, of themselves and of God. And that all they are doing is part of that, and that if they want to end that, they will have to do their Healing. So the Change will be with the awakening to that, a consciousness shift, a vast change to the mind of mankind as it considers the state it’s in: that ALL it is doing, ALL it’s believed was right, ALL of its religious and spiritual beliefs, outlooks, attitudes, are all only keeping it in its truth-denying state.



Imagine the whole of humanity understanding and focused in the direction of knowing everyone is suffering because of being under the Rebellion and that it doesn’t have to be that way. So people living increasingly in the wrong direction and going further against themselves, once The Change fully starts, won’t be able to evolve further into a deeper or greater rebellious state. However, stagnation within where

it's stalled will be a big issue for a lot of people and mind spirits, those people and spirits who don't want to accept that's how they are is all wrong.

So you can say the Great U-Turn has started. The writing is on the wall for the Rebellion and Default. And when the Avonals come of age, when they finish their Healing and openly (publicly) declare who they are to the world (even if that world is only a very small group of humanity), then The Change will have begun.

REBELLION & **DEFAULT**

And once The Change officially begins, there is no turning back. After the Avonal Age, humanity will be given the chance to resume its evil ways and turn its back on The Change and all the Avonal Age has done, and certain people and mind spirits will want to do that. However they won't be able to change the momentum being lived by those who are intent on living true to themselves and God through their feelings. (The availability of Divine Love may be withdrawn for the following spiritual age.) Still in all fairness humanity has to be given the opportunity to decide whether or not it wants to fully heal itself, and without having imposed on it such strong influences as caused by the Avonal presence. But that's all a long time off.

GREAT
U Turn &
THE
CHANGE

So the Avonal Age is a specific Spiritual Age (which you read about in TUB – The Urantia Book), giving rise to The Change in which humanity ends its truth-denial and living unlovingly against itself and its Mother and Father, all of which is the Great U-Turn.

celestial Friends

Avonal **AGE**

Our Guides on Duty...



OUT GATEWAY ISOLATION



Imagine

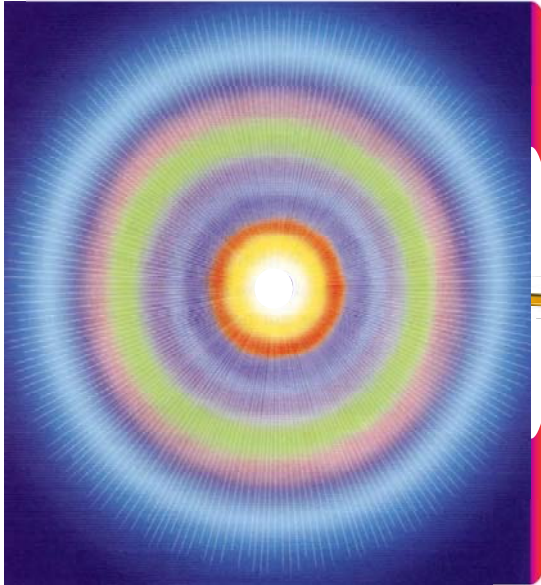
- **Imagine the Revelations of how we are to heal and find our way home to our Heavenly Parents have now been given to us by high level spirits.**
- **Imagine the major errors and omissions within the New Testament of the Bible are addressed and revealed.**
- **Imagine Feeling Healing with Divine Love is the way of life and pathway to Paradise – to our Heavenly Mother and Father.**
- **Imagine by living true to ourselves, true to our feelings, we are living true to God. It's that simple.**
- **Imagine living by the Golden Rule: that one must always honour another's will as one honours one's own.**
- **Imagine women came to understand their True Liberation is through the Truth of their Feelings.**
- **Imagine that our Healing is through our longing to know the truth behind our feelings, both good and bad; and then express that to a friend!**
- **Imagine we each have two Nature Spirits, two Angels, two Spirit Guides, one Indwelling Spirit of God and the Spirits of Truth who are personally involved with us at all times.**
- **Imagine Feeling Healing (with Divine Love being Soul Healing) opening up the opportunity to personally interact with our very own Nature Spirits.**
- **Imagine Feeling Healing with Divine Love opening up the opportunity to interact with our very own Celestial spirit guides.**
- **Imagine parents understood they were to encourage their children themselves, never denying their child the freedom to express ALL of their feelings.**
- **Imagine if parents began to understand that we cause all the issues in our children through childhood suppression and repression.**
- **Imagine society understands parents cause a child's illness even in embryo.**
- **Imagine a society that began to engage in feeling healing and parents were bringing up children free of the imposts of their own injuries.**
- **Imagine if we were allowed to fully express our true personality.**
- **Imagine people communicating with each other again!**
- **Imagine humanity living Feelings First and embracing Feeling Healing.**
- **Imagine that humanity understood what the Rebellion and Default did to us!**
- **Imagine if all levels of control, that we are subjected to, recognised they are all doing the begging of the Evil Ones – Lucifer and his partners.**

- **Imagine parents, education systems, religious institutions, employers and governments relinquished their controlling ways and dictates.**
- **Imagine the world's scientists whole heartedly began to live through their Feelings – break throughs would occur daily! (Imagine all the crap they would have to get rid of and admit to!)**
- **Imagine through engaging your soul based feelings that nothing is hidden!**
- **Imagine children being conceived to parents who are free from childhood suppression and repression.**
- **Imagine if students were able to determine what they actually wanted to learn.**
- **Imagine a health system that recognised the underlying cause of all illness is childhood suppression and repression.**
- **Imagine – believe it or not – Feeling Healing is a cost free health process!**
- **Imagine we can commence our Feeling Healing even while in junior school.**
- **Imagine bottom up democracy where no one is disenfranchised and people elect true professional representation and may directly frame and pass legislation.**
- **Imagine a judicial system that is free to engage in Feeling Healing in its deliberations of truth and remedies.**
- **Imagine that we begin to recognise and accept our true heritage is our Heavenly Mother and Father and is not our family line going back many generations – we are Their children!**
- **Imagine that the resources to conduct war were aligned for the benefit of all humanity and nature.**
- **Imagine if the Zionists were forced to surrender their financial claims or pay income tax like everyone else.**
- **Imagine this will be the commencement of rebuilding the global financial structures.**
- **Imagine that we recognise our true life partner is our soulmate who is always of the opposite sex and we can only come to recognise our soulmate once we have fully Healed ourselves.**
- **Imagine that the Revelations and the ending of the Rebellion and Default are distributed through music, plays, television programs and full length movies as well as the print media in all languages to all of humanity.**
- **Imagine when all the aspects of the Change come into play that not one facet of our life will continue in the manner we have grown accustomed to!**

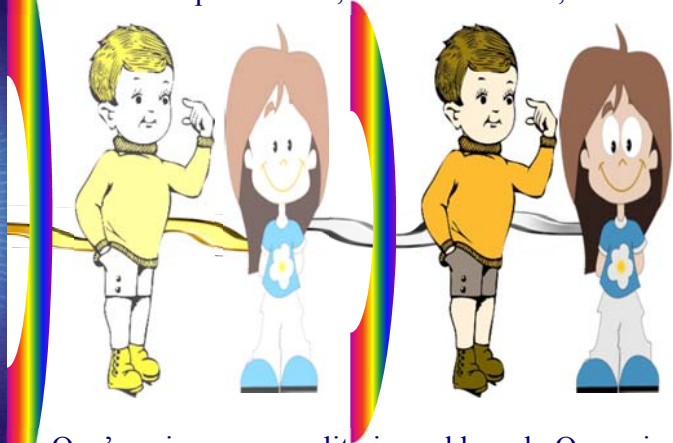
DIMENSIONS of ONE'S EXISTENCE:

Our SOUL IS NOT ENSOULD IN OUR SPIRIT BODY. Our soul exists existentially in a whole different level or plane or place or dimension of being – 'soul land'. It doesn't exist in Creation, it's not experiential like Creation is. The soul, all souls, help create their part of Creation by expressing their personalities into Creation, and then by having their personalities do things (further create) in Creation.

SOUL exists existentially



Our Physical Body and our Spirit Body are of Creation, being linked together by cords of light as are the two spirit bodies, male and female, to the one Soul.



One's unique personality is soul based. Our unique soul expresses its unique personality through the two spirit bodies and physical bodies expressing both the male and female aspects.



**Our soul is the centre of our personality.
We are children of our Heavenly Parents.
Our soul manifests a male and
female personality - it is a duplex!**



In a way, each person's Indwelling Spirit, which is really God, is contracting out the work needed to be done with you to other agencies. So to us spirits, the angels, the nature spirits, other elements under the Divine Minister's control, even other non-humanity spirits, all of which end up doing increasingly more amounts of what your Indwelling Spirit does. And this 'outsourcing' is to affect greater personality interaction, increasing your experiences so they are maximised through interaction with different personalities rather than just relying solely on God. We are overall to become increasingly at-one with God, but we are to do that by becoming increasingly immersed in the experience of being with others.

Nanna Beth – 3rd Celestial Heaven: 25 December 2018



We each have a band of a Nature Spirit pair, Spirit Guide pair, and an Angelic pair, each pair being in their 'soulmate' relationship. In addition, we have our personal Indwelling Spirit.

ENOUGH IS ENOUGH

Andon and Fonta, our first parents to long for our Heavenly Parents, lived nearly 1,000,000 years ago. Naïve humanity was seduced by high spirits, the Lucifer pair, to believe they could be gods through their minds, thus men subjected women to subordination 200,000 years ago. This was added to by the default of the Adamic pair more than 38,000 years ago when they failed in their mission.

REBELLION & DEFAULT **200,000** YEARS

When Jesus with Mary achieved their full Regency of Nebadon, in 26 CE, they immediately had the Lucifer and Satan soulmate pairs assigned to a spirit world prison. Since then, the Creator Pair have been preparing for the ending of the Rebellion and Default for humanity of Earth. The Avonal Pair now on Earth, once commencing their Healing, brought about the imprisonment of the Caligastia and Daligastia pairs in the early 1990s. As the Avonal Pair advanced with their Healing they brought about the formal end of the Rebellion and Default, on 31 January 2018. It is now for all of humanity to embrace the Spirits of Truth of the Avonal Pair and undertake their healing of the imposts of the Rebellion and Default.

Avonal AGE **1,000** YEARS

Spirits of Truth of the Avonal Pair will guide us through our Feeling Healing and into the Celestial Heavens with Divine Love, then the Spirits of Truth of the Creator Pair will lead us through the Celestial Heavens and out through Nebadon towards our Heavenly Mother and Father in Paradise.



Each generation of 25 years or so will see marginal embracement of Feeling Healing. However 1,000 years will achieve universality.



A few will complete their healing during their lifetime but for many it will be incremental.

Universality of Feeling Healing with Divine Love will see the mitigation of discomfort, pain and illness as well as the imposts of global warming and Earth changes. As those events are to ensure that each of us embrace our feelings, both good and bad, down to the very core, so that we fully come to know who we truly are. Sciences will endeavour to remove pain only to see disease manifest in different forms. Earth disturbances are a result of the Harmonic Convergence of the late 1980s, increasing the rotation of the Earth's central core this will only abate when humanity has universally embraced Feeling Healing. These influences are only imposed upon us so that we do not step back into the Rebellion and Default through complacency. Live Feelings First. We are to become the true personalities we are, that being daughters and sons of our Heavenly Mother and Father.

Avonal Revelation

- We are to live Feelings First.
- We've been made to use our mind to live against many of our feelings.
- Our mind control commences at conception and is developed through our childhood.
- All the bad feelings we didn't express as we were growing up are still repressed inside us.
- And all such hidden, buried and unwanted feelings have to come out.
- And whilst they remain repressed within us, they will continue to make us feel bad and unloved.
- We get sick, depressed, suffer, have bad things happen to us because of our repressed childhood feelings.
- Humanity was brought into this state of living against itself by higher rebellious spirits.
- These Evil Ones caused the Rebellion and Default.
- We are made to rebel by default – as we have no idea we're doing it through our parenting in wrongness.
- We are all parented unlovingly – against ourselves, against our will.
- Some parenting in the wrongness is done with more love, yet it's all still wrong.
- To heal this unloving state within ourselves we have to do our Healing.
- Our Healing is our Feeling-Healing or Soul-Healing with the Divine Love.
- We can long to God for Their Divine Love, and this will help us with our Healing.
- God is our Heavenly Mother and Father, the Feminine Aspects of God having been kept hidden from us by the Evil Spirits.
- All humanity's religions and spiritual systems are designed to keep the wrongness going, to keep us away from God.
- Only by living Feelings First Spirituality, The New Way, can you become right, and truly find God.
- Long for the Divine Love.
- Long for the Truth of your Feelings.
- Accepting all you feel is accepting all of yourself, it's your greatest act of self-love.
- And wanting to know the truth of your feelings, is your next greatest act of self-love.
- Love yourself through your feeling-acceptance, and the Truth will set you Free!

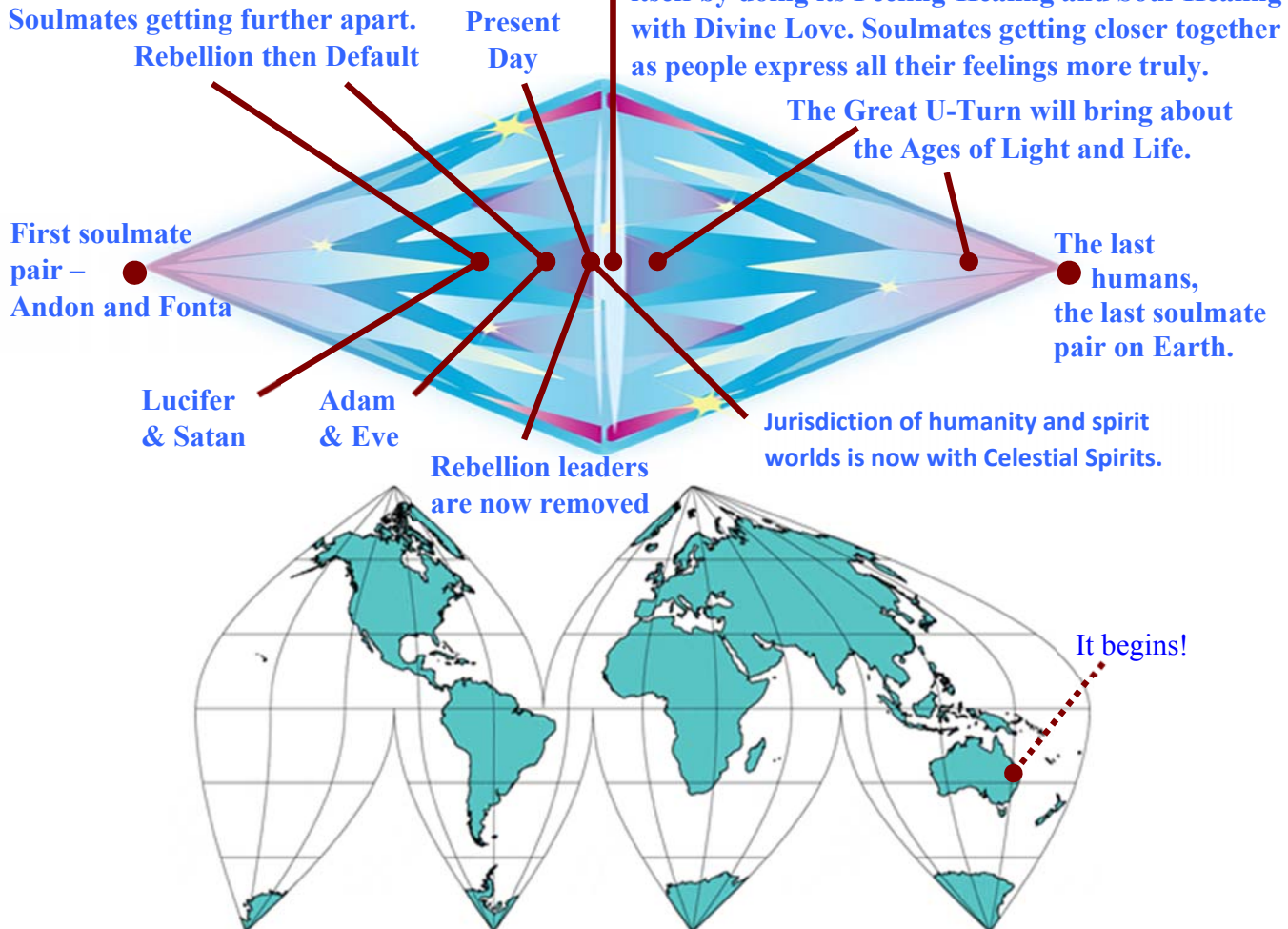
31 May 1914 and ongoing

JOURNEY of HUMANITY into and through the GREAT U-TURN:

Humanity reaching its most evilness, the most lost, the most separation of soulmates. Humanity can begin its Healing. The Great U-Turn begins, the dawning of the Spiritual Age.

Humanity increasing its self- and feeling- denial, its denial of truth. Soulmates getting further apart. Rebellion then Default

The true Healing of humanity. Humanity Healing itself by doing its Feeling-Healing and Soul-Healing with Divine Love. Soulmates getting closer together as people express all their feelings more truly.



This is the Great U-Turn. We are to feel and live by our feelings and express our feelings, our mind will follow in support, not the other way around.

Feelings First, you can be sure about that! **Once women get that message and start living it, then the tide will really change**, with men either deciding to support them by looking to their own feelings or being left on the outer wondering what the fuss is all about.

The feminine light is going to sweep through humanity and purge it of all the yuk and darkness, helping to bring the whole of humanity back into a nurturing loving mother state of being, from which the supportive, caring father can support her and together they can make the world great again, they can bring humanity up into its natural love perfection whilst at the same time offer those people who want to spiritually grow the truths of how to embrace the Divine Love and move on to the Celestial level.

By living true to ourselves, true to our feelings, we are living true to God. It's that simple.

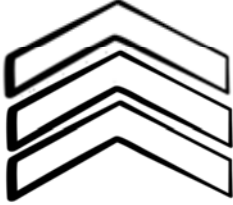
(Passage in blue calibrates on the Map of Consciousness at 1,500)

The CHOICE is OURS to MAKE:

Celestial Truth:

Truly all-loving;
 Living true to oneself;
 Mind supporting Feelings;
 Living with the Divine Love;

Fully Healed of the Rebellion and Default.



THE FEELING WAY

Feeling – Ascendance
 Unlimited progression

- Living true to your untruth;
- Honouring all your bad feelings;
- Expressing feelings to uncover their truth;
- Healing the Rebellion and Default within yourself;
- Feeling unloved; being unloving;
- Feeling as bad as you can feel;
- Feeling like you are no one special;
- Longing for the Divine Love.



THE MIND WAY

Mind – Transcendence
 Limited progression

- Enlightenment, Nirvana, feeling all-loving;
- All false, mind-contrived. Anti-truth, anti-love;
- Still evolving the Rebellion and Default within yourself;
- Feeling and believing you are the Superior One;
- Living with your mind in control of your feelings;
- Living rejecting all your bad feelings;
- Living with your mind contriving you feel loved;
- Rejecting the Divine Love.



All religions, New Age, agnostic,
 atheists, no spiritual interest,
 Living the Rebellion and Default.

Hell:
 Exploiting the Rebellion and Default.

The Feelings are the doer; the Mind the teller. So, we are to go with our feelings, which we can't be told to do with our mind. So the longing for the Divine Love, doing our Healing by expressing our feelings and longing for their truth, are all feelings and doing it with longing. Whereas the mind just wants to tell us what to do and how to be, no feelings in it; all how our parents have treated us.



perceived truth MoC 880 – relative truth potential MoC 1,480

THE PSEUDOSCIENCE OF MAN-MADE CLIMATE CHANGE IS ABUNDANTLY OBVIOUS BASED ON CONCRETE SCIENTIFIC FACTS THAT ARE OBTAINED FROM EMPIRICAL EVIDENCE

<https://www.gsjournal.net/Science-Journals/Research%20Papers-Climate%20Studies/Download/7186?fbclid=IwAR0PNmdP61zCBYWrX2T3SdbL1jLvYe-t6N28LG3Vlv5rcFUi29rYOKLIJ6g>

https://www.researchgate.net/publication/322910275_THE_PSEUDOSCIENCE_OF_MAN-MADE_CLIMATE_CHANGE_IS_ABUNDANTLY_OBVIOUS_BASED_ON_CONCRETE_SCIENTIFIC_FACTS_THAT_ARE_OBTAINED_FROM_EMPIRICAL_EVIDENCE

ABSTRACT

The massive increase in the number of underwater volcanoes that were detected in the last 26 years and also the formation of many new islands around the globe have exposed the pseudoscience of man-made climate change. It is the increase of extra-terrestrial energy at the earth's interior which is the fundamental cause for the climate change and temperature change of the oceans. Moreover, the increase of extra-terrestrial energy at the earth's interior is also the reason for the increase in earthquakes and volcanic eruptions. When the optimum energy level will be reached, the geomagnetic reversal will take place accompanied by massive geological upheaval. This has happened many times throughout earth's history.

Due to the reason that oceans occupy twice the surface area of land, earth scientists were thinking that the number of underwater volcanoes cannot be far higher than the number of volcanoes that exist on land. But the number of submarine volcanoes is much, much higher than that. Up to 1990s geophysicists and geologists were assuming that only around 10,000 underwater volcanoes are lurking beneath the seas and oceans. The advocates of man-made climate change were arguing that this number of volcanoes cannot contribute any significant amount of heat to the temperature of the oceans, even if all these volcanoes are active, since oceans cover 71% of our planet. By the middle of last decade, the opinion regarding the number of submarine volcanoes changed drastically. For instance, Oregon State University (OSU), reported on its website that there may be more than one million underwater volcanoes.

<http://volcano.oregonstate.edu/submarine>

"If an estimate of 4,000 volcanoes per million square kilometres on the floor of the Pacific Ocean is extrapolated for all the oceans than there are more than a

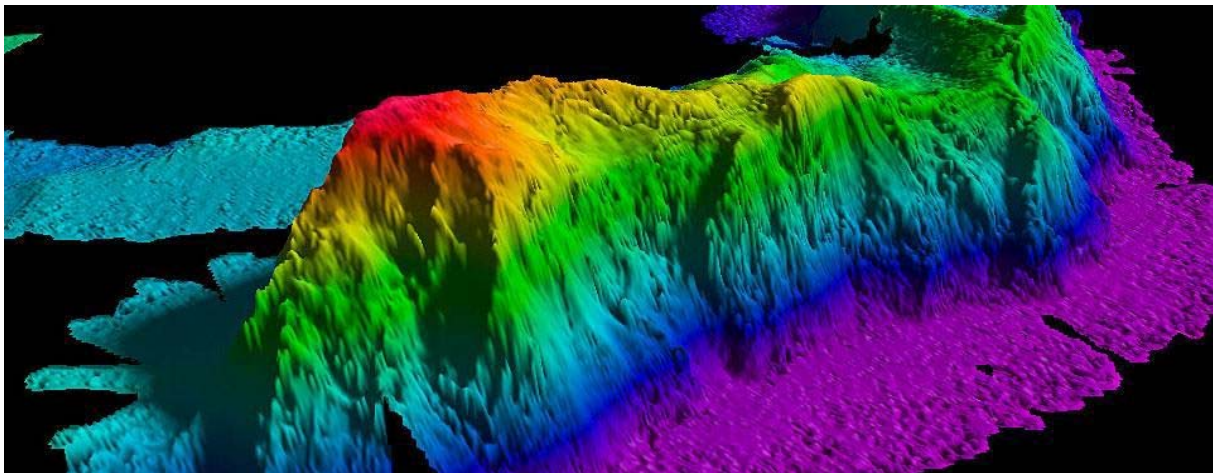
million submarine (underwater) volcanoes. Perhaps as many as 75,000 of these volcanoes rise over half a mile (1 kilometre) above the ocean floor. Technology and hard work by a group of tenacious explorers/geologists have allowed us our first detailed glimpses of submarine volcanoes."

Nonetheless, although, the researchers of OSU acknowledged an important fact about our planet that other mainstream institutes did not acknowledge it, they still- in my opinion- intentionally underestimated the impact of these submarine volcanoes on the temperature of the oceans. The problem is in the following quotation "The most productive volcanic systems on Earth are hidden under an average of 8,500 feet (2,600 m) of water. Beneath the oceans a global system of mid-ocean ridges produces an estimated 75% of the annual output of *magma*. An estimated 0.7 cubic miles (3 cubic kilometres) of *lava* is erupted. The magma and lava create the edges of new oceanic plates and supply heat and chemicals to some of the Earth's most unusual and rare ecosystems." It is well known fact, that **there are around 1500-1511 potentially active land volcanoes, with about 500 of them having erupted in historical time.** So, how the HELL can more than one million submarine volcanoes only release 75% of the amount of lava produced by 1,500 land volcanoes? Absolute nonsense, even if we do not take into consideration **that on average land volcano is smaller compared with submarine volcano.** This is yet another example showing how institutional researchers have to be politically correct no matter what scientific data they have in hands. However, even after **NASA was persuaded to admit that there might be one million submarine volcanoes,** man-made climate change advocates never wavered. And in their opinion even if 30% of this huge number of underwater volcanoes are active, it is still not sufficient to have any impact on the temperature of the oceans. In reality of course, if only a fraction of these volcanoes are active they would induce massive amounts of heat and CO_2 into the world's oceans.

Nonetheless, the estimated number of underwater volcanoes continued to rise. Timothy Casey, consulting geologist argued in his paper that three million underwater volcanoes "can't be wrong". His paper was published on June 15, 2014 in Principia Scientific International, titled, Volcanic Carbon Dioxide. Timothy Casey, stated in his paper that most estimates of volcanogenic carbon dioxide emission are woefully low. **"An enormous and unmeasured amount of carbon dioxide degases from volcanoes, mostly submarine. Lava contains a surprising amount of carbon dioxide. In fact, CO_2 is the second most abundantly emitted volcanic gas next to steam."** Casey added that **"carbon dioxide emissions from volcanoes – especially from underwater volcanoes – dwarf anthropogenic contributions (man-made) sources.**

Unfortunately, some researchers dismiss not only mid-oceanic-ridge emissions, but all other forms of submarine volcanism altogether, which is a major oversight." Moreover, according to one study, Pacific mid-plate seamounts number between 22,000 and 55,000, of which 2,000 are active volcanoes. And one researcher even dismisses those few, justifying the omission by claiming that mid oceanic ridges discharge less CO₂ than is consumed by hydrothermal carbonate systems. However, Casey pointed out, that after surveying 201,055 submarine volcanoes, **Hillier & Watts estimated that more than 3 million submarine volcanoes exist worldwide, of which, Casey estimated 140,000 are active.** See the entire paper at the following link <http://principia-scientific.org/volcanic-carbon-dioxide.html/>

Anyway, the above estimation concerning the number of underwater volcanoes is not the end of the story. **Fisher and Wheat believe that the number of hydrothermally active seamounts at somewhere between 100,000 and 10,000,000.** Most of these seamounts are so big, as many as a million of them have diameters bigger than 7 kilometres and stand more than 2 kilometres high. The two researchers also stated that a significant number of the seamounts already surveyed appear to be hydrothermally active. **Seamounts** are undersea mountains formed by volcanic activity were once thought to be little more than hazards to submarine navigation. Today, scientists recognise these structures as biological hotspots that support a dazzling array of marine life.



A map of a seamount in the Arctic Ocean created by NOAA's Office of Coast Survey by gathering data with a multibeam echo sounder.

Furthermore, Fisher and Wheat estimated that another 1 to 10 million smaller hydrothermal features may dot the ocean floor. Those “smaller hydrothermal features” stand some 100 meters high. You can read the whole paper of Fisher and Wheat, entitled, “Seamounts as Conduits for Massive Fluid, Heat, and Solute Fluxes on Ridge Flanks.” At the following link

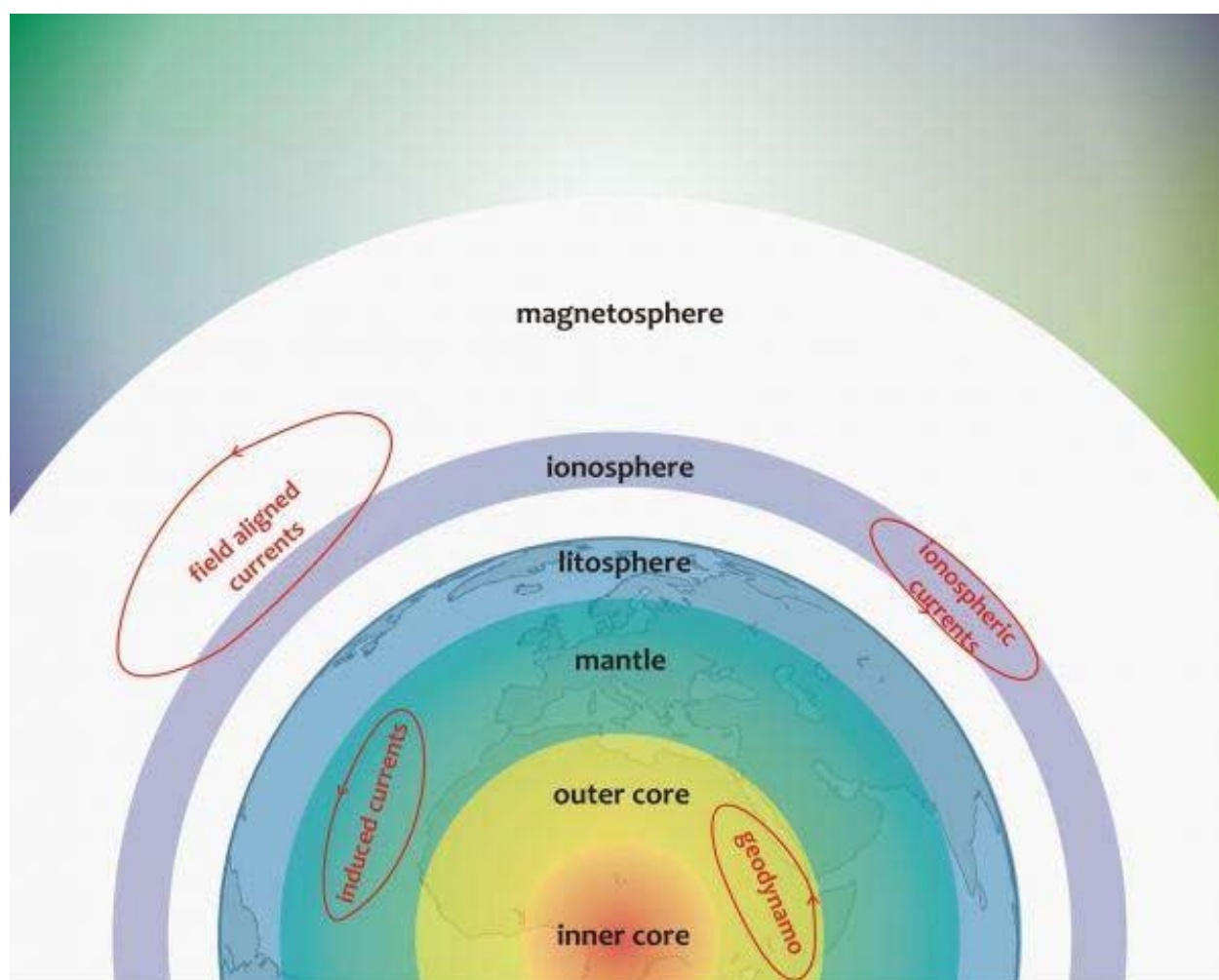
https://websites.pmc.ucsc.edu/~afisher/CVpubs/pubs/FisherWheat2010_SeamountFluxes.pdf

To many people, including well known Earth scientists the above predicted number of underwater volcanoes, seamounts and hydrothermal features is exaggerated, but not in my understanding. In fact, the number could be much higher. **The Earth's interior is fed continuously with external energy-mainly through the polar regions of the Earth- and without releasing the excess energy supply the Earth would have blown up billions of years ago. At the same time, if the Earth's inner core does not receive external supply of energy, it would have been dead-cold also billions of years ago and the Earth as a whole would have stopped spinning.**

One can roughly estimate the amount of energy and volcanic materials released as results of earthquakes and volcanic eruptions ever since Earth was formed. So, with all those hot materials and energy thrown into the surface and the atmosphere over billions of years how can the temperature of the core remain to be hotter than the surface of the sun? In fact, my argument is valid even if one accepts the notion that half of the heat at the Earth's core comes from the decay of radioactive elements, which is of course not true at all since the tiny amounts of radioactive elements are located in the crust, while the core is composed of an iron-nickel alloy.

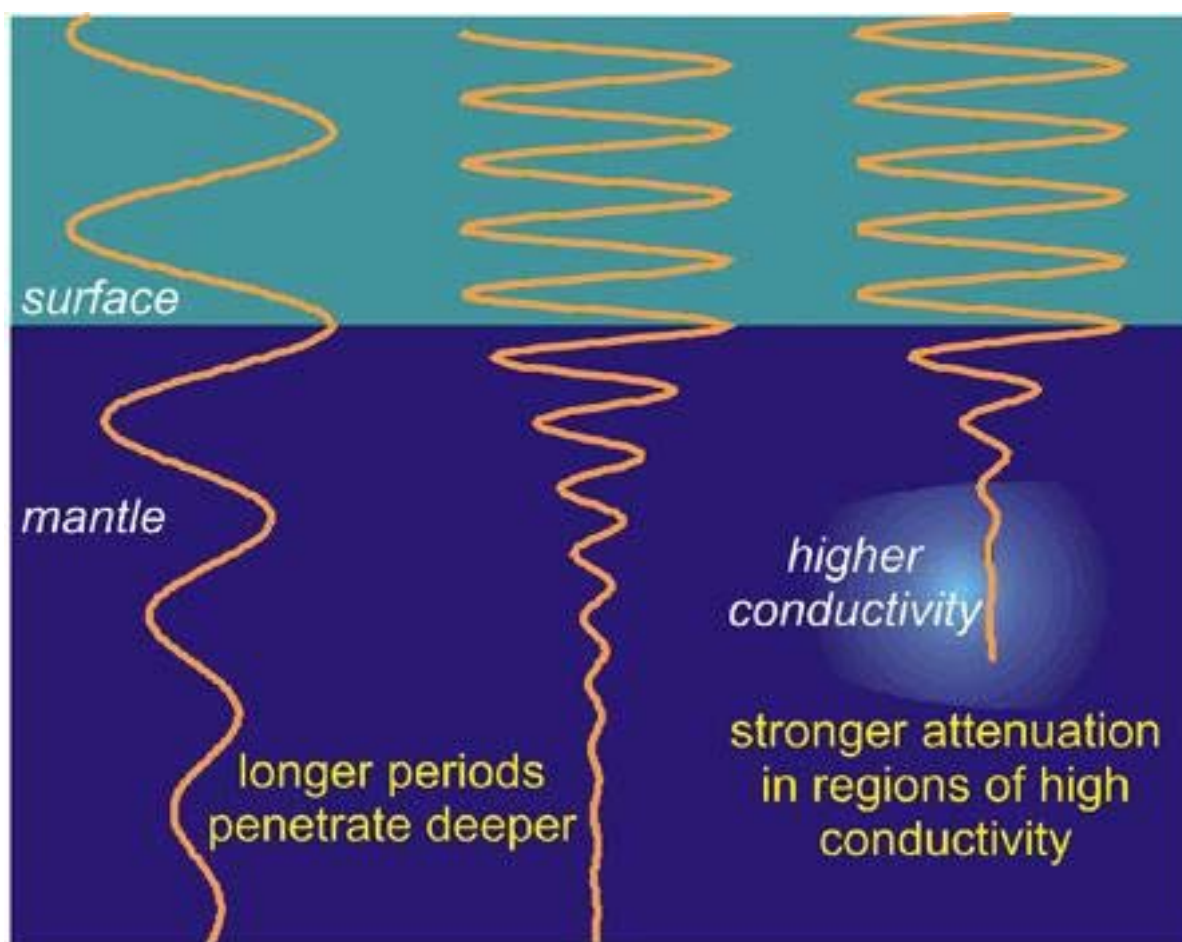
In addition to the above reasons, the external energy supply is required to maintain the internal magnetic field. Moreover, the rate of the external energy supply is the determining factor in the reversal of the geomagnetic field. Keeping in mind, that the core shifts its direction of the spin when the geomagnetic field reverses its polarity. However, the Earth's magnetic field is made up of two main parts; internal and external. The internal part comes from two sources; the Earth's lithosphere (magnetized rocks forming the crust and the mantle), while the second source – the dominant one – is the liquid outer core. On the other hand, the external part comes from the plasma currents flowing in the radiation belts

(ionosphere and magnetosphere).



Different current systems that make up the Earth's magnetic field: Credit: roma2.rm.ingv.it

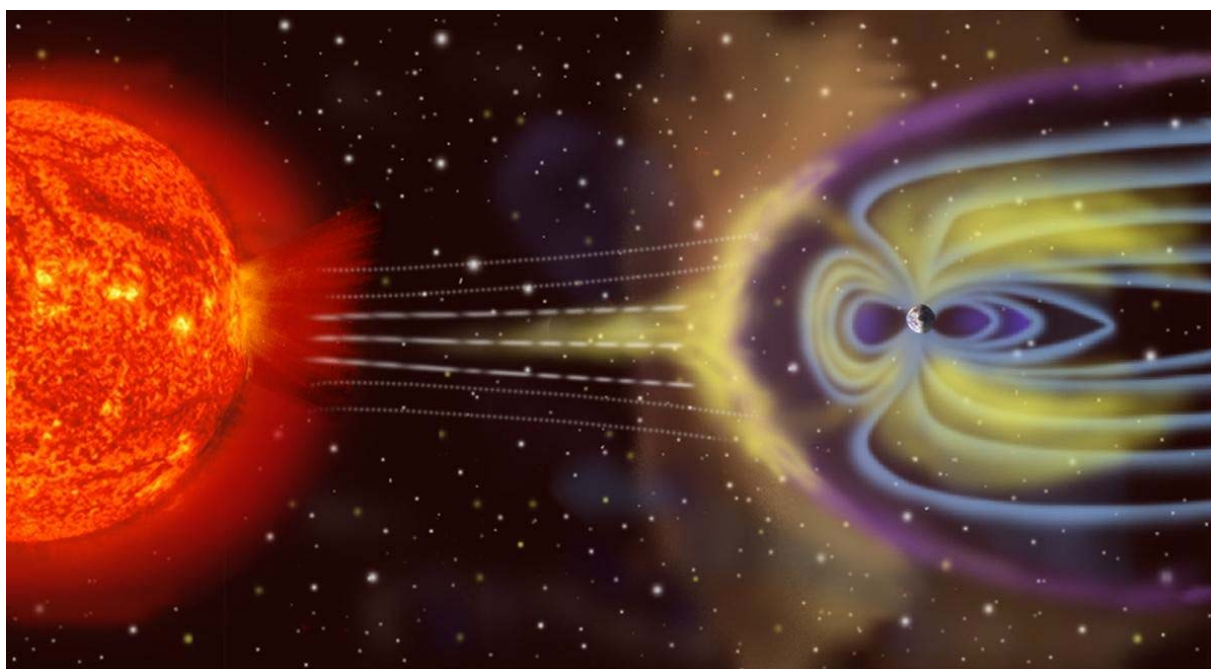
As a result of the interactions between the Sun's magnetic field (magnetized plasma flowing from the Sun) and the geomagnetic field, time-varying magnetic fields are generated. These time-varying magnetic fields in the upper layers (magnetosphere and ionosphere) generate time-varying plasma currents in the crust, mantle and the interior of the Earth (*electromagnetically induced fields*). The more intense the time-varying magnetic fields in the ionosphere and magnetosphere, the higher is the intensity of the induced plasma current and the deeper is the penetration to the layers of the Earth.



A magnetic signal penetrates deeper into the Earth if its period is longer or electrical conductivity is smaller.
Credit: Space.dtu.dk

In other words, an **intense magnetic radiation induced in the upper layers of the atmosphere mean a deeper penetration inside the Earth and consequently, higher thermal activity.** Keeping in mind that all dynamic activities inside the Earth, whether in the crust and upper mantle or in the interior, depend on thermal activity and its distribution. **The Earth's magnetic field varies on different timescales, and the most important variation is the one that results in field polarity reversals.** Thus, it is obvious that the time-varying external fields are the main factors in the changes that take place in the main geomagnetic field. The

electromagnetic radiation induced in the outer layers is the energy supply that keeps the geomagnetic dynamo process functioning. The dynamo process behaves like a magnetic induction coil that allows energy to be produced by electromagnetic induction. When the Earth's molten layer (iron and nickel), which make up the outer core, experiencing magnetic stress as a result of magnetic field interactions, this causes a current to flow inside the layer. This current induces its own magnetic field, which is stronger than the field that generated it in the first place. As the molten metal goes through the stronger field, more current is induced that increases the field even further. Nevertheless, this geomagnetic dynamo process needs energy to keep it running. **It takes enormous amounts of energy to produce and sustain the magnetic field inside the Earth. Thus, the magnetic field cannot exist at all if the dynamo does not receive an external energy supply. The system cannot sustain itself by using fuel from the Earth's core. Huge amount of currents – in the range of billions of Amps – go into and out of the inner core. Those currents are what power the Earth's internal magnetic field and cause the Earth to spin. Basically the inner core rotates because it is part of a vast electric circuit connected to the Sun.**



Artist's depiction of solar wind particles interacting with Earth's magnetosphere. Sizes are not to scale. Credit. wikipedia.org

However, **the energy supply from the Sun can remain more or less steady for a very long time (for many thousands of years), but incremental changes will always take place on upward or downward spiral cycles. These cycles depend exclusively on the position of the sun in the galaxy. Earth changes during the upward cycle are always enhanced and speeded up by an excess amount of solar-cosmic energy events. Such as an intense solar flares, gamma-ray bursts, interstellar gamma radiations and cosmic rays showers (high energy cosmic particles). In other words, when the solar system approaches its highest point in the galaxy as it travels through space on its helical orbit, the energetic cosmic events increase in the number and magnitude and they induce major changes not only to our planet but also, to the sun itself and all the planets of the solar system.** Therefore, any solar-cosmic event during the final phase of the upward cycle would induce extra energy in the outer layers of our planet that would be transferred to the inner ones. This is why the core temperature of the Earth depends on the total amount of extra-terrestrial radiations. Other energy sources like radioactivity and friction may produce constant and small amount of current, but the process of electromagnetic induction does not produce a constant current because it depends on external factors.

There can be no doubt, that the increase of extra-terrestrial energy particularly at the interior of the Earth, is the fundamental cause for the climate change and Earth changes in general that we are experiencing. And it is obvious, that the energy builds up at the interior is approaching its optimum level. When the maximum level will be reached the Earth will reverse its magnetic polarity and that will be accompanied by an ejection of massive amount of energy. The energy will be in the form of huge earthquakes and intense volcanic eruptions, both land and underwater volcanoes.

It is worth to mention, that one of the most important and fundamental questions about our planet is the reason for geomagnetic reversal. Why Earth's magnetic field flip from time to time? It has flipped many times according to the geologic record. Geophysicists and geologists cannot provide even superficial explanation to this important question. Based on the current understanding of gravity it is impossible to solve this issue about our planet. I have raised this question in other articles that I wrote.

Nevertheless, **the diffusion of heat from the Earth's interior to the upper layers as a result of external energy builds up is the main cause of the climate change.** This is my basic argument over the past few years. Now, this fact is becoming increasingly obvious. Previously, all the studies of ocean warming have been carried out on the upper 700 meters of water, due to the limited availability of ocean-temperature data below that depth. But, since around the turn of the century, the Argo array, an international system of robotic profiling floats, has massively increased ocean sampling to 2,000 metres, and allowed researchers to show conclusively that ocean warming extends below 700 metres. In reality, however, the heating of the oceans is starting at their bottoms. This fact has been proven in the coldest waters of the abyssal zones. Oceanographers measured the abyssal ocean to depths of 6,000 metres by lowering accurate recording thermometers and other instruments to the ocean floor on long cables from research vessels. During the 1980s and 1990s, an international program called the **World Ocean Circulation Experiment** collected thousands of such profiles around the globe. Those oceanographers returned in the 2000s and re-measured ocean properties of those same sites. They detected a consistent warming signal in the abyssal ocean around the globe. The measuring data showed the strongest warming is taking place in the Southern Ocean, around Antarctica. The rate was approximately 0.03 degrees Celsius per decade. See, '**Warming of Global Abyssal and Deep Southern Ocean Waters between the 1990s and 2000s: Contributions to Global Heat and Sea Level Rise Budgets**' <http://journals.ametsoc.org/doi/abs/10.1175/2010JCLI3682.1> Further north, abyssal ocean waters are also warming, although at smaller rate compared to what the Oceanographers saw in the deep Southern Ocean.

Now, the question that should be asked, is how can a warming atmosphere influence the temperature of these abyssal waters? These abyssal waters are thousands of metres below the surface. The notion of so-called deep ocean circulation cannot possibly be correct explanations. It is a deeply flawed notion. Even some mainstream researchers have acknowledged that the deep ocean circulation theory is wrong. See the following articles.

Cold water ocean circulation doesn't work as expected.

<https://www.sciencedaily.com/releases/2009/05/090513130942.htm>.

The physical flaws of the global warming theory and deep ocean circulation changes as the primary climate driver.

<http://tropical.atmos.colostate.edu/Includes/Documents/Publications/gray2012.pdf>

Nevertheless, in the last six years the real cause for the warming of the global abyssal and the deep southern ocean, and also the massive decrease of ice in Antarctica has become clearer. Between 2011-2017 a large number of giant undersea volcanoes have been detected around and below Antarctica. And it seems that the actual number of volcanoes below that continent is even higher than what has already been detected and surely some of them are already active. Most underwater Volcanic eruptions do not reach the surface but rather melt the ice from beneath and drastically destabilise it. This is definitely the case with the white continent. This is the reason why it is losing huge amount of ice per year to the ocean. According to a research paper published in 2014 in geophysical research letters, Antarctica is losing about 160 billion tonnes of ice a year to the ocean – twice as much as when the continent was last surveyed. The research paper was based on data collected by Europe's Cryosat spacecraft. You can read the whole paper in the following link below.

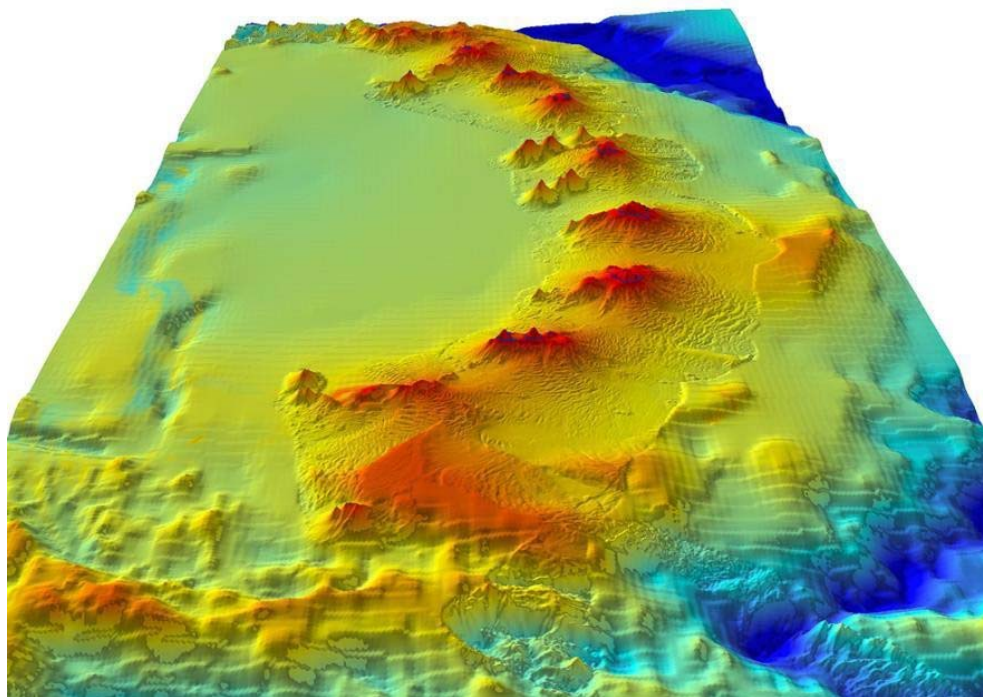
Increased ice losses from Antarctica detected by CryoSat-2

<http://onlinelibrary.wiley.com/doi/10.1002/2014GL060111/abstract>

On July 16 2011, it was reported on national geographic news that Giant undersea volcanoes found off Antarctic. A dozen previously unknown peaks were discovered beneath the waves—some up to 10,000 feet (3,000 metres) tall, according to the British Antarctic Survey.

The volcanoes were found near the U.K. territories of the South Georgia Islands and South Sandwich Islands during a month long mapping expedition, which used multi-beam sonar to fill in a 370-mile (600-kilometre) by 90-mile (150-kilometre) gap in existing seabed maps. "It was amazing finding them," said Phil Leat, geologist and volcanologist with the survey. "There were so many of these volcanoes we had no idea about." The researchers were expecting to find

volcanoes in those territories, but not one the size of Japan's Mount Fuji. "It's also very exciting, because you are discovering not just a volcano nobody knew about but a huge one."



Newfound undersea volcanoes around the South Sandwich Islands are seen in a 3-D sonar image. Image courtesy British Antarctic Survey

A year earlier in 2010 another active giant underwater volcano, was mapped and explored in detail for the first time by a joint Indonesian-U.S. expedition north of the island of Sulawesi. Watch the Video "the first footage of one of the world's largest underwater volcanoes, a roiling, 10,000-foot-tall peak crawling with crustaceans near Indonesia" <https://news.nationalgeographic.com/news/2010/07/100714-indonesia-oceanos-volcano-exploration-vin/>

In 2017 researchers from Edinburgh University have uncovered almost 100 volcanoes below Antarctic ice sheet. This is in addition, to the 47 that had been discovered over the previous century of exploring the region. **Student's idea leads to Antarctic volcano discovery** <https://www.ed.ac.uk/news/2017/student-s-idea-leads-to-antarctic-volcano-discover> These newly discovered volcanoes vary in height from 100 to 3,850 metres. All are covered in ice, which sometimes lies in layers that are **a few kilometres thick**. These active peaks are concentrated in a region known as the west

Antarctic rift system, which stretches 3,500km from Antarctica's Ross Ice Shelf to the Antarctic Peninsula. One of the research team said, we are amazed, "We had not expected to find anything like that number. We have almost trebled the number of volcanoes known to exist in west Antarctica. We also suspect there are even more on the bed of the sea that lies under the Ross ice shelf, so that I think it is very likely this region will turn out to be the densest region of volcanoes in the world, greater even than east Africa, where mounts Nyiragongo, Kilimanjaro, Longonot and all the other active volcanoes are concentrated."



Credit: WN.com

Shortly, after the British team announced the discovery of this massive number of volcanoes below Antarctic ice sheet. A team of scientists from New Mexico Tech, Dartmouth College, and Vermont Technical College has uncovered evidence of volcanic eruptions in ice cores taken from the West Antarctic Ice Sheet (WAIS). A paper describing their findings has been published in Scientific Reports. **The first** physical evidence of subglacial volcanism under the West Antarctic Ice Sheet.

<https://www.nature.com/articles/s41598-017-11515-3>

In addition to, the above data about the number and eruption of underwater volcanoes, the Wood Hole Oceanographic Institution, <http://www.whoi.edu/> reported on January 12, 2018 that a visit to the biggest underwater volcano eruption in the last 100 years revealed deep sea mystery. ***A Close-up Look at a Rare Underwater Eruption.*** *Expedition to explore the Havre volcano reveals surprising details* <http://www.whoi.edu/news-release/a-close-up-look-at-a-rare-underwater-eruption>

However, there is no doubt in my mind that the number of underwater volcanoes that are active is far, far higher than what has already been detected. **More important, the rate of heat flow from the interior of the Earth to the upper layers has increased enormously in recent years.** This fact, is a crystal clear, not only from the numerous methane leaks found on the floors of world's oceans, <http://www.sciencemag.org/news/2014/08/numerous-methane-leaks-found-atlantic-sea-floor> but also from the emerging of many new islands all over the globe. Between 1996-2016, **10** new islands have been formed. "Yes, islands are disappearing — most recently the five Solomon Islands lost to rising sea levels. But don't despair just yet. For every island that goes the way of the dodo bird, the Earth is busy creating new islands." read the rest at the link below <https://www.mnn.com/earth-matters/wilderness-resources/stories/10-new-islands-formed-last-20-years> And watch in the link below how, NASA satellites captured the amazing formation process of new island in the South Pacific, as result of huge underwater volcano eruption. This is the first time satellites could see an island forming. The island is only about a mile long. It was expected to be washed away soon after its formation. Now, more than three years, it's still there. <http://www.businessinsider.com/nasa-satellites-see-formation-new-island-hunga-tonga-hunga-haapai-2017-12> You can read more about the formation of new islands in the two following links. **Smoke and magma mark the spot! From Japan to Germany, the world's newest islands revealed.**

http://www.dailymail.co.uk/travel/travel_news/article-4646952/The-world-s-newest-islands-revealed.html

The Caribbean May Soon Have a New Island
<http://www.visailing.com/blog/the-caribbean-may-soon-have-a-new-island/>

<http://www.visailing.com/blog/the-caribbean-may-soon-have-a-new-island/>

Mainstream scientists and media have been aware for a very long time of the massive increase in undersea volcanic eruptions. But, acknowledging these events would expose the hoax of man-made global warming and climate change. Besides that, scientists do not have scientific explanations for the increasing activity of underwater volcanoes and the formation of new islands.

CONCLUDING REMARKS

The pseudoscience of man-made climate change is mixing up environmental pollution with other climate issues. All kinds of pollution (air, land and water) did not cause the climate to change. But they have devastated all forms of life, including human life of course. However, one might have the impression after reading this article that I do not support the development of an alternative industries that would protect our planet from the danger of the pollution and make the air we breathe cleaner and the lands and seas that we obtain our foods from healthy and free from contaminants. In fact, you can call me a fanatic when it comes to the issue of polluting our planet. But, we need to distinguish between climate change that happens naturally and environmental pollution as a result of irrational and backward economic order. I sincerely believe that the current economic order is to blame for the horrible pollutions and destruction of the natural environment including the destruction of the habitats of so many species. Humanity cannot and should not be blamed. Humanity is a victim just like so many other species. The profit system which is imposed by a tiny minority of evil minded and corrupt people is the one to blame for all the tragedies of our world. The well-being of the planet itself, not only humanity and all species urgently need a civilized and rational economic order. Such an economic order must make the aim of industrial productions serving consumption needs rather than financial profit. And in some sectors of this new economic order, financial profit should be the last priority. Currently, human life itself is sacrificed to serve the profit system. The slogan of democracy, freedom, free market and human rights do not exist in reality. Based on pure scientific evaluation and also as it can be seen by the people of the whole world (both in developed and developing countries), free market and democracy cannot exist, never existed and can never exist under

capitalism. How can you have democratic societies and free market with such enormous inequalities in income? According to Oxfam, the richest 1% has as much wealth as the rest of the world combined. And as of 2016, the richest 62 people in the world had as much wealth as the poorest half of the global population. The massive increase in social wealth by the financial oligarchy at the expense of the working class is absolutely shocking. The Bloomberg Billionaires Index published in the end of last year, showed that the fortunes of the world's wealthiest 500 billionaires rose 23 percent over the past year, making them \$1 trillion richer than at the end of 2016. The combined wealth of this group reached \$5.3 trillion. The gain of \$1 trillion was four times last year's increase. Bloomberg found that the world's richest 500 people as a group added an average of \$2.7 billion to their fortunes every day in 2017. This means that, on average, each of these individuals added \$5,400,000 every day, or \$225,000 every hour. The massive increase of wealth of the financial oligarchy accompanies growing indicators of social misery at the other pole of society. And we are not talking about society of developing nations. A report in December 2017 by the Center for Disease Control showed that life expectancy in the US fell for the second year in a row. Thus, it is obvious that capitalism has failed to provide the absolute majority of people-even in the most advanced country- their basic rights. Real democracy and free market are impossible tasks under monopoly capitalism. Besides that, every honest intellectual knows that even scientific ideas are not free to move under this self-contradicting and backward system. The designed peer review process is a living example. It is a flawed and corrupt process at the heart of science and journals. The fundamental aim of this process is the restriction of the free movement of scientific ideas.

1- Peer review: a flawed process at the heart of science and journals

<https://www.ncbi.nlm.nih.gov/pmc/articles/PMC1420798/>

2- When Science is Under Attack... <http://www.lindau-nobel.org/when-science-is-under-attack/>

3- Nobel winner declares boycott of top science journals

<https://www.theguardian.com/science/2013/dec/09/nobel-winner-boycott-science-journals>

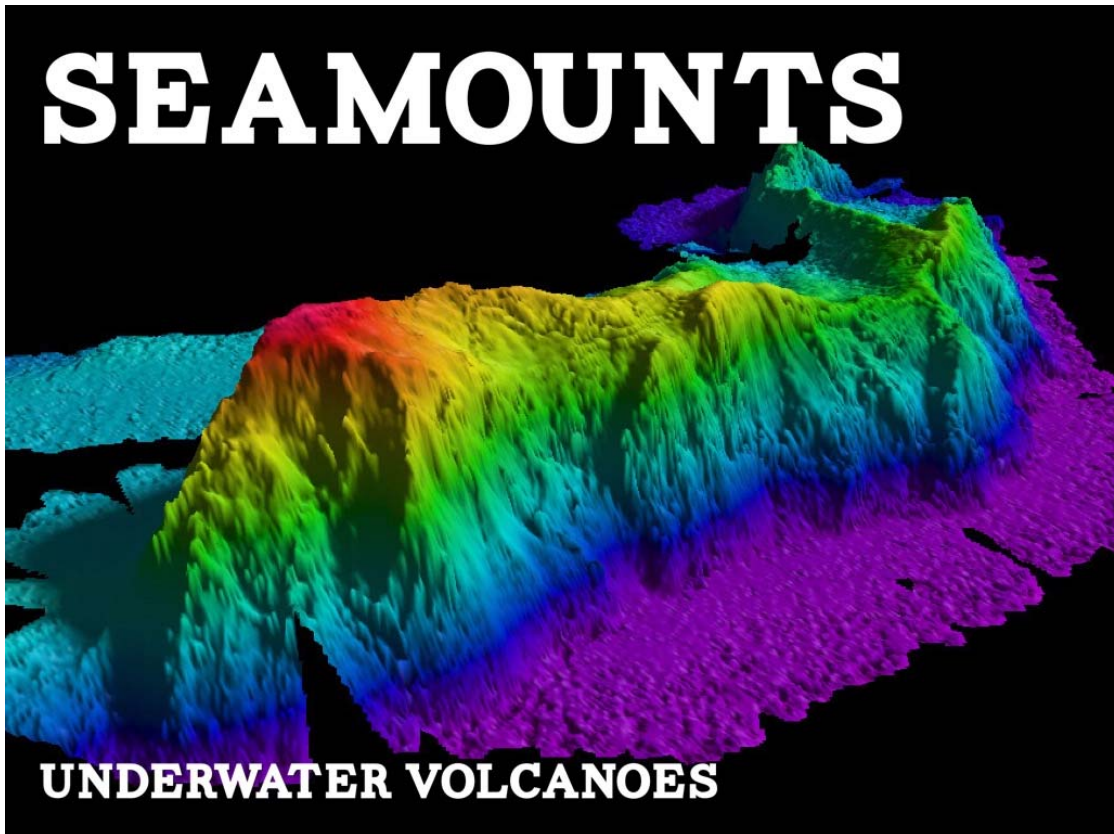
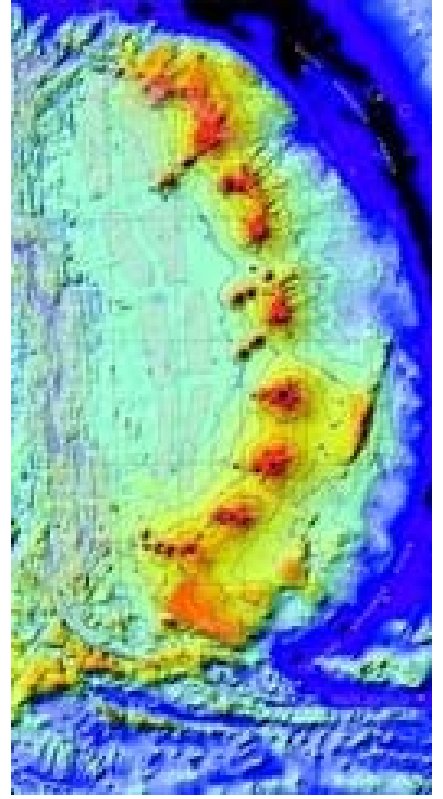
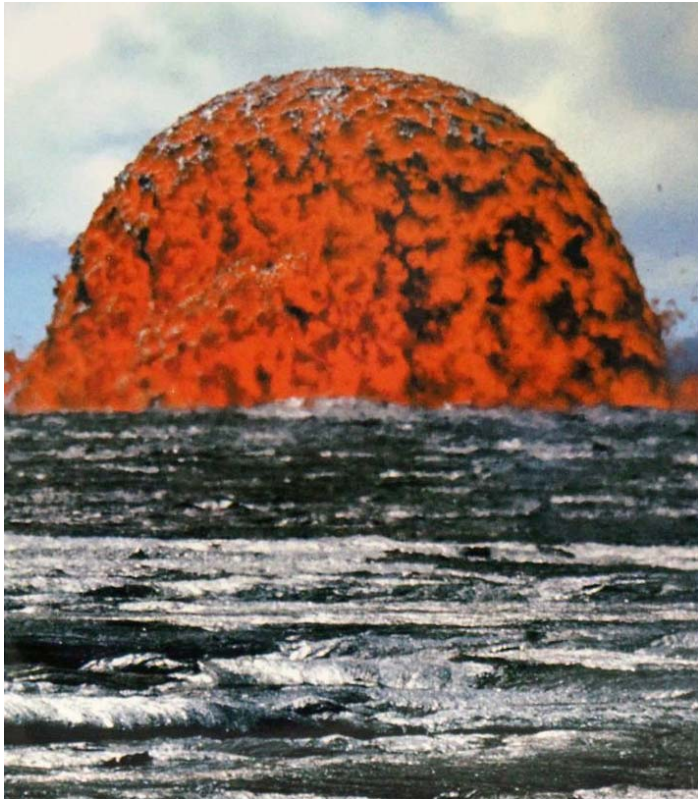
It is a well-known fact, that scientific breakthroughs cannot be promoted or be developed into technologies that would benefit society if these breakthroughs pose economic threat to the owners of capital or undermined the social prestige of their selected holy scientists. Therefore, it is clear that crony capitalism is not only an obstacle to world peace, true democracy and economic prosperity, but also, it is an obstacle to a real solution regarding the pollution of our environment. Besides that, real scientific progress or rather free movement of scientific ideas is an impossible task. Science without frauds and misconduct cannot exist in our institutions under a backward and inherently corrupt socio- economic system. One can provide so many examples from different fields of scientific disciplines that show the antagonism between this backward socio- economic system and revolutionary discoveries. **Moreover, earthshaking discovery that can solve the vital needs of humanity as a whole, like the one that I possess must be suppressed at all costs.** With absolute certainty, the real enemy to scientific progress and welfare of humanity is crony- monopoly capitalism. In fact, this backward system is not only suppressing important scientific discoveries, but also creating fake ones. The notion of man-made climate change is a good example. We can clearly see the suppression of scientific facts and the creation of fake ones in order to serve the political and economic agenda of the owners of capital. Nonetheless, **the massive increase in the eruption of undersea volcanoes over the last two decades have exposed entirely the notion of man-made climate change. This notion is one of the greatest scientific hoaxes in the history of science.**

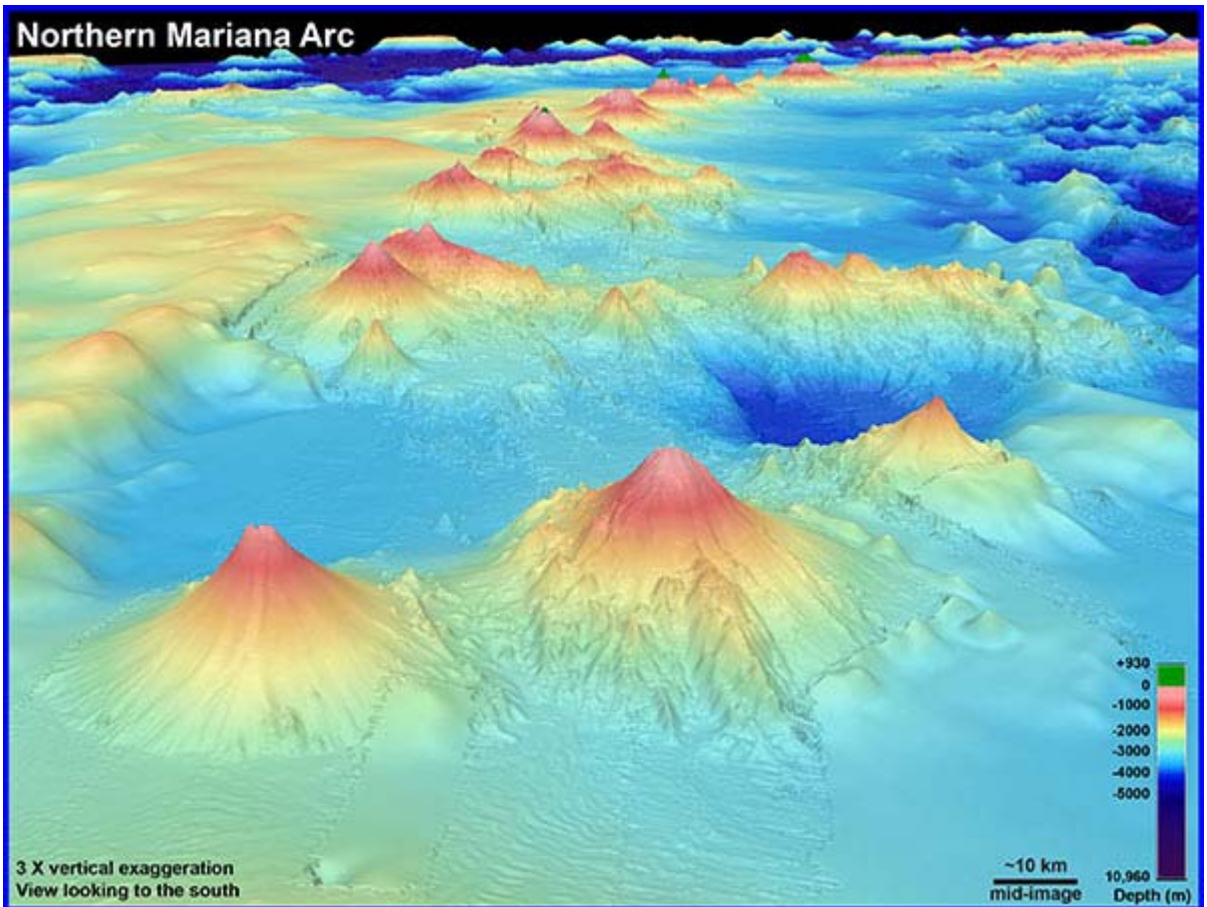
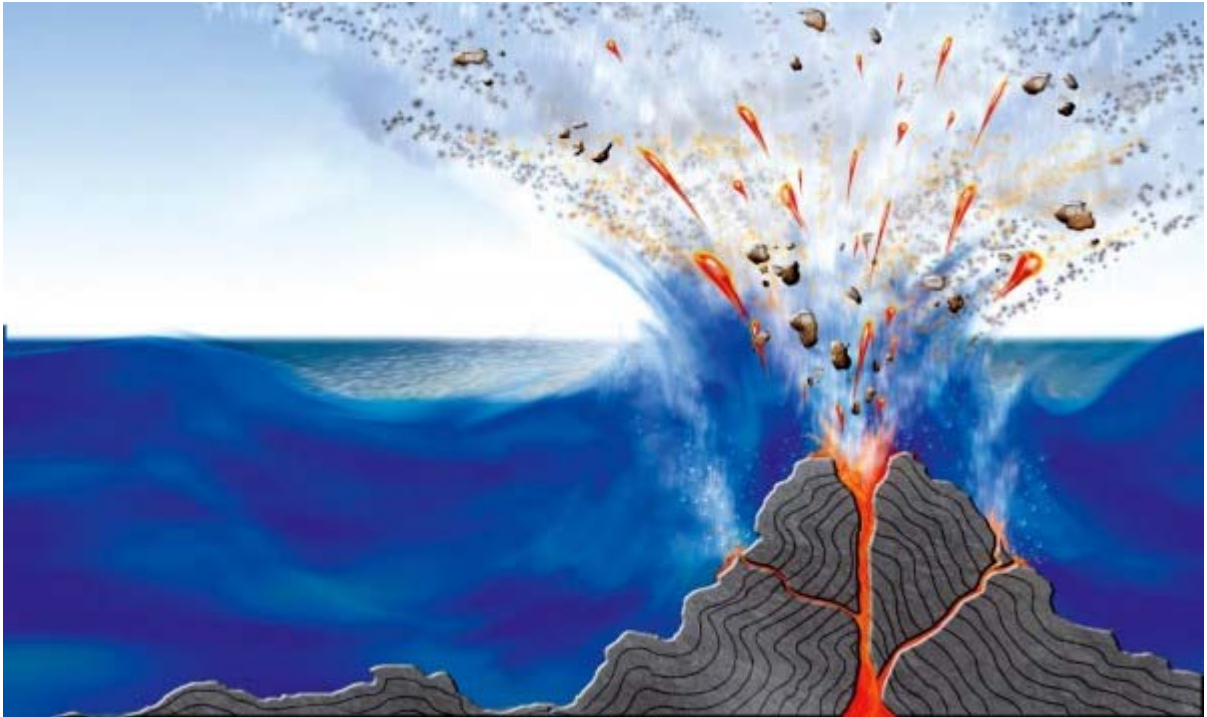
19 January 2018

Jamal S. Shrair, Founder of the Helical Universe and Researcher of Nuclear Fusion and Fundamental Physics at ShrairFusion www.helical-universe.info

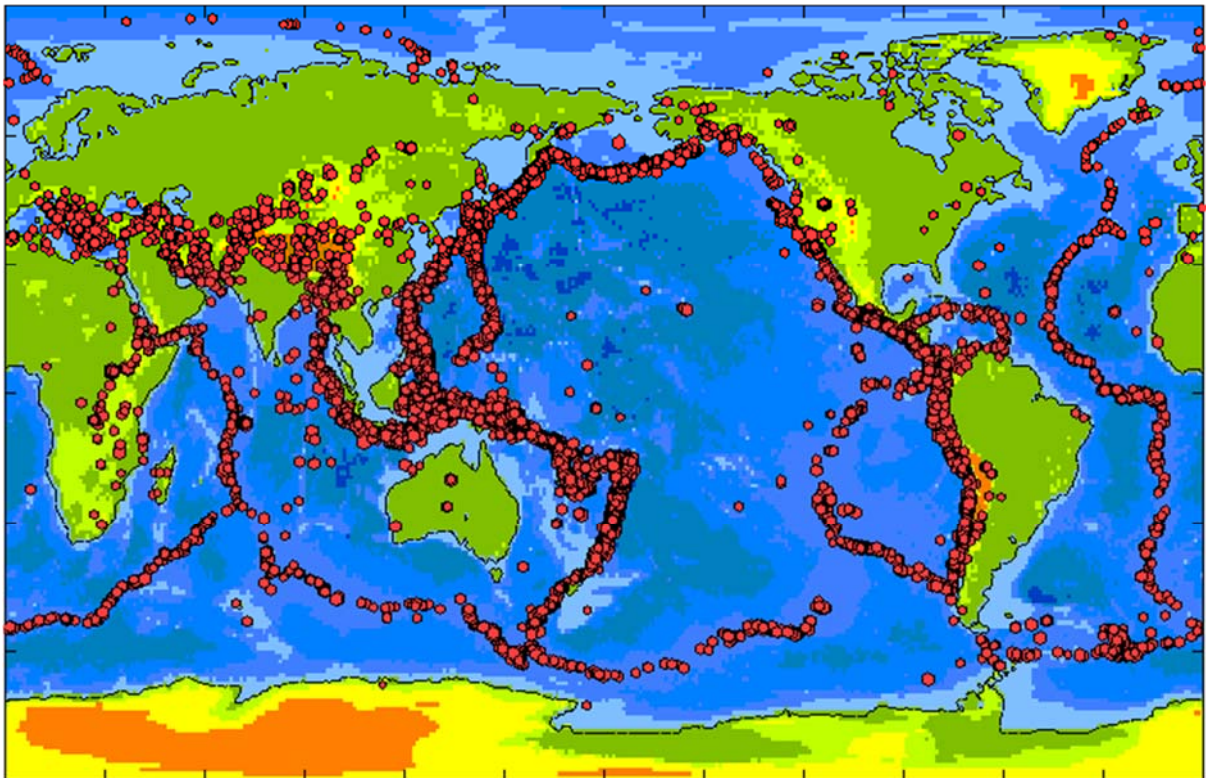
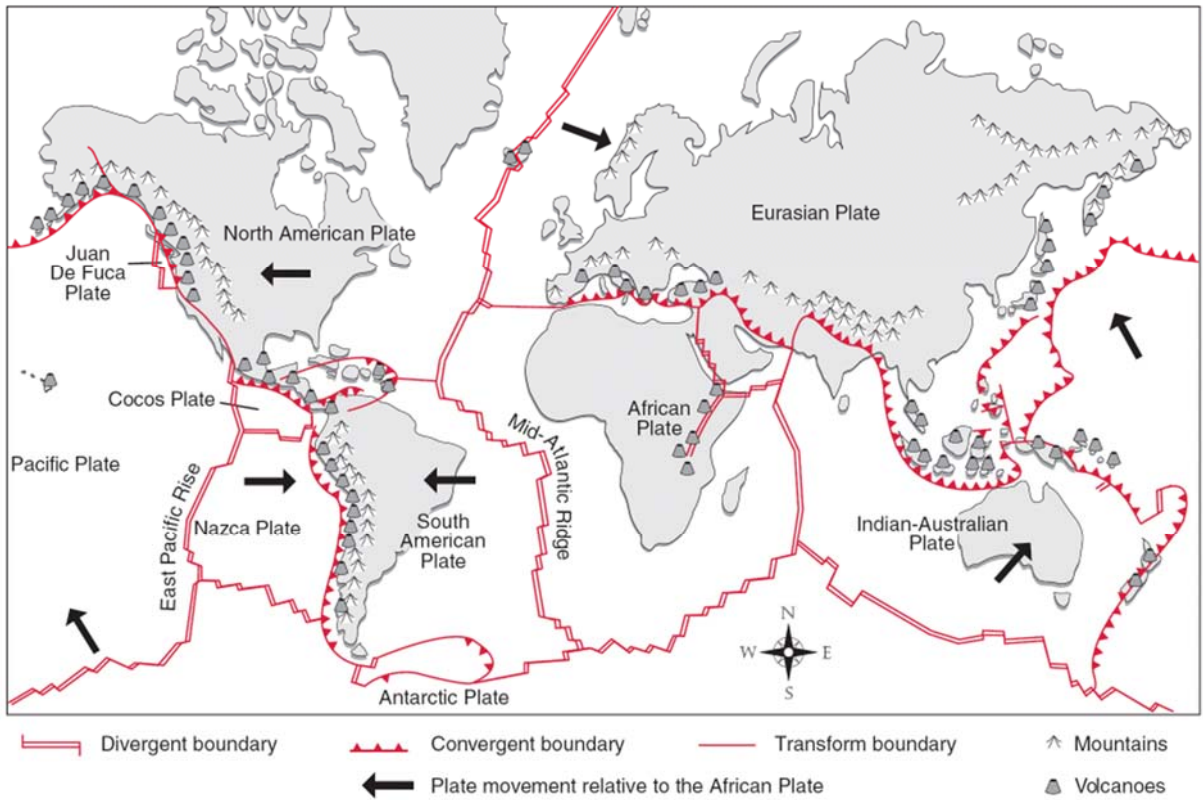
He has a B.Sc. in Electrical Engineering from Canada's Queen's University and a M.Sc.in experimental and particle physics from the Eötvös Loránd University of Science in Budapest, Hungary. His M.Sc. thesis project was an investigation of cosmic muons using a Cherenkov detector. In his post-graduate studies, he joined the faculty of electrical engineering and informatics at the Budapest University of Technology and Economics, where he studied surface physics and electron devices. The title of his thesis project is "The application of Nanoporous Silicon Layers for Efficient Gas Sensors".

Underwater Volcanoes





Active Volcanoes, Plate Tectonics, and the "Ring of Fire"



Underwater Volcanoes

Underwater Volcanic Eruptions are caused by the Seafloor Ripping itself Open and letting Magma and Gases Through:



HEALING PHASES

Monday, 17 December 2018

James: So what about the world, is there anything further you can tell me about it?

Nanna Beth, 3rd Celestial Heaven: Those who are seeking to destroy the Deep State and remove power from the hidden controllers are progressing well. They are trying to keep a lot of it quiet because they don't want their 'enemy' to know all they are doing. Early next year we expect you'll start to see big changes taking place as Trump and Putin start to assert themselves more. The public are on their side and growing more so each day, many in Europe beginning to realise that their leftist ways were not actually good for their wellbeing. The rioting should continue, ebbing and flowing, and it is putting a lot of pressure on the old way and existing status quo; large cracks are appearing which will soon lead to large failures; people will start to be disgraced as evidence of their controlling ways at the detriment of the people will come out more. **It's still the snow ball starting off small yet gaining size and momentum each day.**

Also you might like to know, the Earth itself is starting to change its rotation speed and is slightly moving on its axis, thereby causing shifts in surface weather patterns as warming and cooling takes effect, just happening in different places than how it has been. And these changes are coming from the core that's being affected by greater space changes. There is always massive pressures and forces affecting every part of natural creation, so the world and all space and all that's within it. And as David (Montaigne) points out, observers have observed that things remain the same, at least seem to be the same, although with minute incremental changes, all of which culminate to periodic, large swift changes. And so humanity is coming into a time of rapid change, and on all levels, not just the physical or spiritual. Of which I still can't say more.



So the debate about global warming or cooling will continue with both being right, as both are occurring. And in some areas they are affecting each other, in other areas they are happening independent of each other.

James: Thank you Nanna Beth, you've covered all I was wanting you to update.

Nanna Beth: I'll speak to you soon James. Bye now.

COURIER ANNA is DEAD

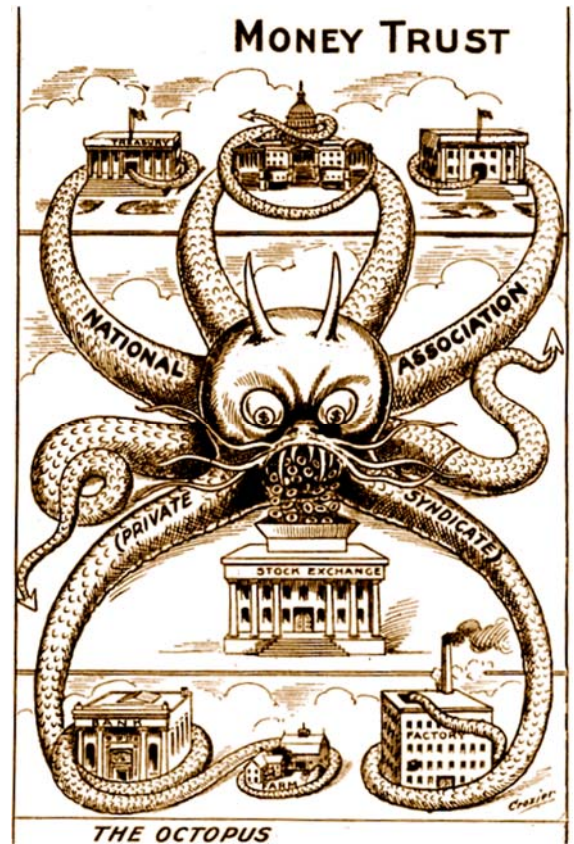
Monday, 14 January 2019

Nana Beth, 3rd Celestial Heaven: **Trump and Putin** who are allies of a sort, are working strongly in their push to derail the so-called Deep State. They want to unhook their countries from its control, and start to show up many of its controlling arms, a lot of which involves the Germans, French and British. And they need to do this so as to lead them deeper into being able to deal with the hidden controllers who are orchestrating the Deep State. And part of the difficulty they have is, they too are hooked up in some aspects of the Deep State because it's all pervasive and has been running so much of corrupt government of the world for so long. It's like a giant octopus with many tentacles and it's taking time to isolate and deal with enough of them to afford themselves the greater traction they'll need to push deeper into the heart of the beast. But they are getting there. They are well protected and the Deep State has become so big and complacent that it's not been able to fully counter them, not even understanding that people like Trump and Putin, although part of the elite, hate these people and corporations that make up the Deep State. The Trumps and Putins of the world do actually want peace and for everyone to have a prosperous and happy life, and there are, and have been growing in number, a greater amount of these people who are well connected and able to work within the Deep State playing it at its own game. And we're supporting them, whilst at the same time working to ensure the more

selfish and greedy power controllers fulfil their rebellion requirements. So Armageddon is still on the cards, it being the clash between these two sides for control of the world, and with the lessening of power of the real hidden controllers behind it all.

And SI is tied up in it all. There are those Deep State elements using it for their own gain, there are others on Trump and Putin's side who want what John and Crystal want, and then there are the hidden controllers working out what they want to do with it as well. And it's not as fixed as it might seem, the energy of the world is changing, and everyone on these higher controlling elite levels is feeling it as it is being borne out by the growing rebellion against the Deep State by the people and the likes of Trump and Putin.

So the stakes are very high, yet the outcome is inevitable because the whole lot is going to roll over, but in such a way so as to limit the destruction. We're working to effect more of a transition, to new ways of thinking about the world, new relationships between countries; the world is dying and it's not from **global warming, that's all Deep State rubbish to generate the control over the systems they were after**, but such mentality becomes stuck in place and takes a long time to change, but it's breaking down being shown up for the lies that it is, this happening in Europe and England and in certain parts of America the most.

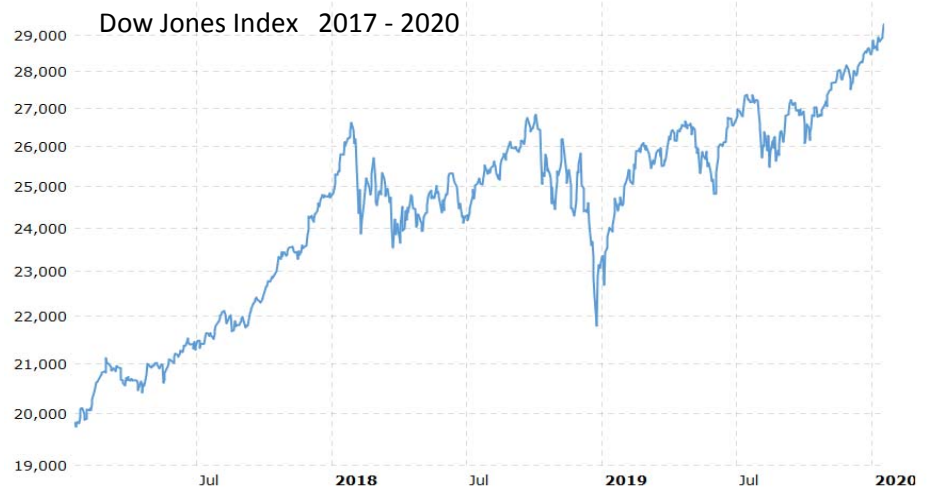


The controlling American Deep State are the real criminals in it promoting and manipulating every aspect of the world, every political system in every country to suit their purposes. The Europeans have believed all the bullshit allowing themselves to be manipulated by the Americans because they generally have believed that globalisation would be a good thing, whereas the controlling Americans know it's only good if they control it. The Chinese don't have a clue, and are destroying themselves from within. They are poisoning themselves on all levels. Their mental doctrine is going to start falling apart soon as people start rebelling against being so mind controlled. The forces of the world are gathering to throw off such control, people are wanting to feel freer and want to have a say that does count, not just be told what is good and right for them, which never works out that way. The Russians are working their own agenda within it, shoring up their country for any possible collapse they can envisage happening, from a Pole Shift, to a financial Armageddon, to a moral and spiritual one of the West, they being the only country who is able to see the bigger picture and prepare for it. There are then other minor countries that are siding with all the various factions but really they don't have a say in the overall changes, they having to go along with whatever direction they are dragged.

CRYPTO CURRENCIES and CARBON CREDITS TRADING: Friday, 23 March 2018

Nanna Beth, 3rd Celestial Heaven: Everything that's on the Internet is corruptible Graham. As for it being the 'saviour of the financial system' bringing accountability to it, unless it is corruptible, how things stand now, it won't be accepted. If it can be worked for wealth enhancement by the powers that be, then it will be used, all so long as there is still electricity to keep the whole show on the road. If you want to speculate during its inception, well that's up to you, and as James has been chiding me of late

about my 30,000 Dow prediction when the markets are going down, well I don't think you'd want to listen to anything I have to say. (20 January 2020 Dow Jones index 29,348) Speculation wasn't my forte and I don't intend embarking upon it now. If the blockchain is brought in as a viable alternative, then of course you'll use it as will everyone, suffering the unforeseen



consequences of yet another product developed within the Rebellion and Default. I'm afraid people will only start setting themselves free of corruptible monetary systems when they have done sufficient of their Healing and band together to live and share and 'trade' based on the honesty and integrity of the truth they are living. It will be the Truth within their hearts that they want to live, with their feelings keeping them true to that truth, which will determine whether they want to remain honest in such dealings. I can speak for James concerning the notion of stealing – when is it appropriate to steal and when it is not, and what technically denotes theft? Can taking a couple of plants without telling anyone be considered a punishable theft, or should one be scrupulously honest at all times? And those are the sorts of natural life situations one has to work through, going this way and that with your feelings as you heal out of you all that is wrong and out of balance. And that's how it's going to be for humanity, long and slow, yet it will be the only way people will come to be living truly honestly, that being when a Celestial truth is fully lived, because up until then, whilst one is still doing their Healing and so is still part of the Rebellion and Default, one is dishonest, untrue and so a liar and thief, even if one never rips off another person or steals anything in his life. It's just levels we all have to live our way through, deciding on each level how we'll live our current truth.

The crypto-currencies will continue to be used and explored as they work to sure-up their security, however as much as one lot believes they are safe and secure, another lot can hack it, so it's the same as it ever was. And if the crypto itself is solid, there will be other ways found to corrupt the system it's used within, or the trading house, or corporation, or government or whatever... there are always ways particularly as the Internet is a man-made creation.

It will eventually be about getting rid of all the man-made creations and just dealing naturally in harmony with nature as people express all they feel and grow in the truth of those feelings. That is the long term plan. So now with humanity living in the most man-made systems ever, so it's going to be one long breaking down.

Note: Carbon Credits trading is yet another market that the Deep State can and are promoting and manipulating. If the Deep State of any given country is driving such an innovation then you will also find the global hidden controllers involved even more discretely behind the scenes.

"Beacons of Light" around the globe

