

URBAN RURAL TECHNOPATH Pty Ltd

Capabilities Statement

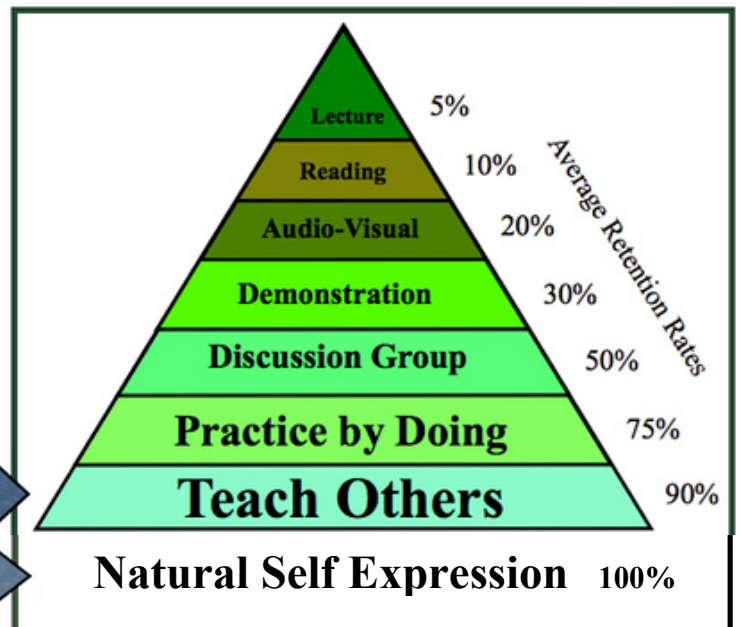


Peter N Shepherd BE(Hons) ME FIE(Aust) LGE CP Eng FAIM FICDA
URBAN RURAL TECHNOPATH Pty Ltd
Queensland Australia

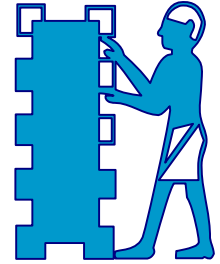
Mb 0418 758 765
Bs 61 7 5594 0479
Em info@financefacilities.com



The Learning Pyramid



URBAN RURAL TECHNOPATH CAPABILITIES



URBAN RURAL TECHNOPATH Pty Ltd (URTh) combines together the logistics and capabilities of all appropriate and technically proven corporations and professional services from across Australia and elsewhere for the objective of delivering sustainable infrastructure and commercial endeavours into emerging economies and communities around the world.

Economical Sustainable Communities incorporate:

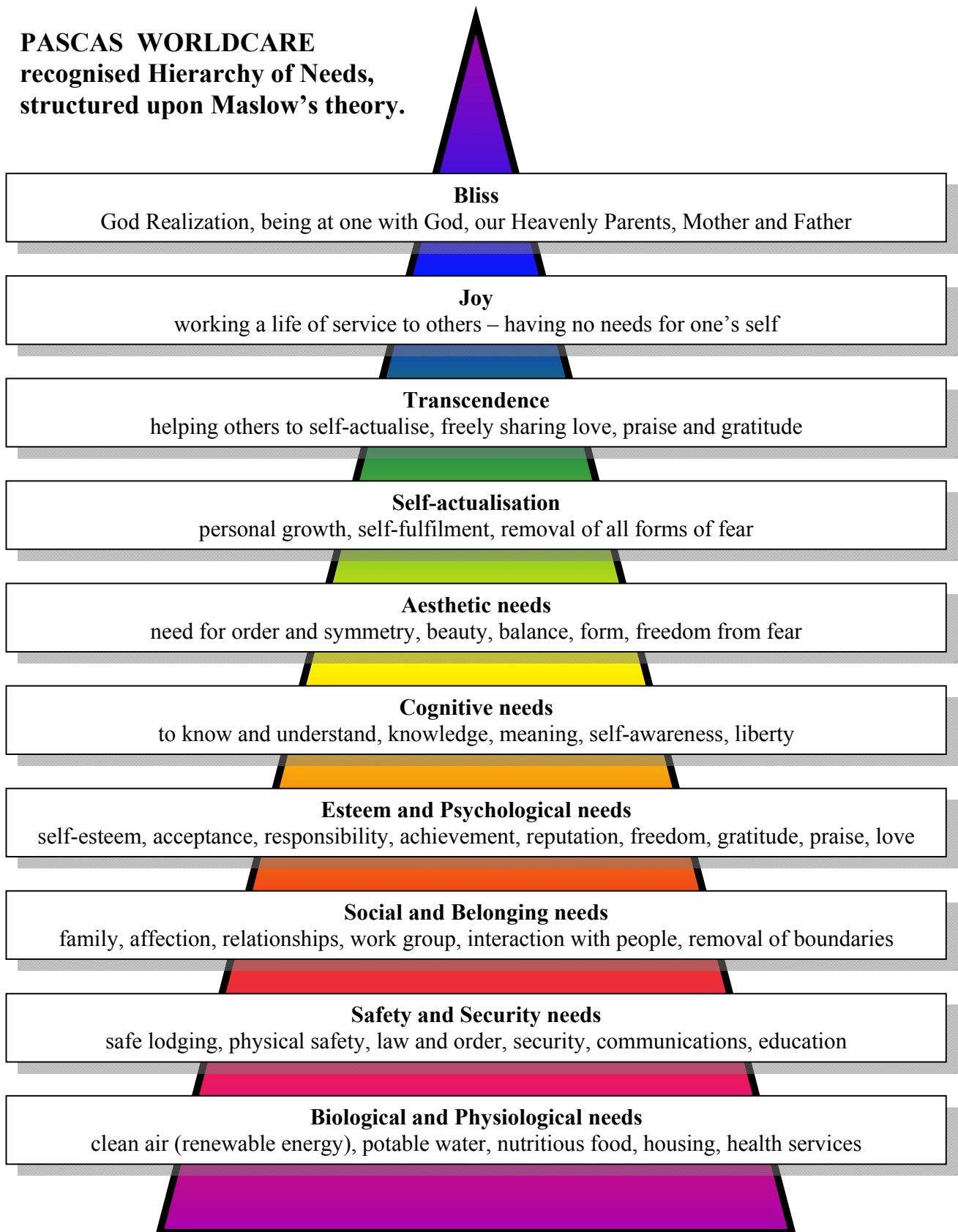
- Urban reconstruction.
- Communications.
- Water services and quality thereof.
- Energy with a focus on renewable.
- Education – particularly into remote communities.
- Adult training in new industries and technology.
- Infrastructure development for the delivery of potable (drinking) water.
- Infrastructure development for management of sewerage.
- Employment of sewage sludge for the delivery of high performance organic fertiliser.
- Building materials for the provision of low cost housing with quality.
- Introduction of industries that provide substitutes for imports.
- Introduction of industries that provide value adding opportunities for natural resources.
- Health education programs and facilities.
- Health technologies with a focus on major health problems and local issues.
- Renewable energy programs with a focus on remote area services.
- Transport systems – roads, rail, as well as low cost peoples' car.
- Resource discovery, management and development.
- Sustainable management of the environment.
- Agricultural programs for higher sustainable yields of quality products.
- Agricultural programs for the introduction of new crops and systems.

- Value adding and introduction of export products into the agricultural industry.
- Higher employment and management of food – greater percentage of food to the consumer.
- New technologies and industries being introduced from the many new innovations available through our community of innovators.

Everything is Interconnected



PASCAS WORLDCARE
recognised Hierarchy of Needs,
structured upon Maslow's theory.



URBAN RURAL TECHNOPATH CAPABILITY PLAN

OUR STRATEGIC DIRECTION:

- To employ the core Australian construction engineering and agricultural businesses with operational excellence by facilitating their expertise, leadership and growth in international operations and to foster and develop international strategic alliances and partnerships to provide sustainable improvements in standard of living in developing and emerging countries and communities.
- To further invest in adjacent and complementary market segments such as services, maintenance and manufacturing businesses to provide sustainable economic base for suffering and emerging communities for a better world.
- To train and educate the key people in the areas we work to ensure continuity and succession and a lasting betterment in these communities.

OUR VALUES

- Our strength is derived from the integrity, reliability, safety, enthusiasm and commitment of our people, and of those who we come in contacts with, who are our most important asset.
- Teamwork and mutual trust is at the heart of our successful client / family relationship. It provides the environment for open communication, a proactive approach and a common goal.
- Innovation differentiates our business in the marketplace. We continuously improve all that we do.
- The quality of every project is an enduring reflection and benchmark of our commitment to client service and technical excellence and an innovation for betterment in the community.

ABILITIES

To leverage resources, technical support in fields of building (including demolition and waste recycling), rail, civil, marine, power, mining, water and services provider, facilities management. To contract companies well placed to roll out components of the global strategy of URTh (Urban Rural Technopath) throughout Asia Pacific Region and other global regions where we may be invited.

OUR COLLECTIVE EXPERIENCE INCLUDES

- Public infrastructure.
- Communication.
- Education.
- Health and science.
- Health Care Centres
- Hospitals.
- Retail.

- Wholesale.
- Commercial and Industrial.
- Hotels and resorts.
- Tourism.
- Highways, Railways, Bridges, Road network.
- Dams.
- Water treatment plants.
- Waste water treatment plants.
- Reticulation and transfer systems.
- Aquifer Storage and Recharge.
- Stormwater Management.
- Irrigation.
- Re use systems – cement, steel and timber recovery.
- Land Use Management.
- Defence.
- Multi unit residential.
- Restoration and fitout.
- Manufacturing Facilities.
- Landscaping.
- Forestry.
- Mining.
- Bulk Materials Handling.
- City building, etc.



WE AIM TO

- Challenge conventional standards.
- Stay abreast of and introduce the latest systems and technologies.
- Work together with our clients in a spirit of teamwork and cooperation.
- Maximize the training and education of the local people to carry out the current projects and carry on the future works.

PERFORMANCE BUILT ON TRUST

- Companies available have all carried out major landmark building, infrastructure projects and offer building and development services across all market sectors and customise delivery method to best suit the needs of the clients and the project. The range of delivery methods includes development partner, construction manager, design and construct and traditional head contractor.
- With world class management systems, excellent relationship with sub contractors and suppliers and enviable track records for delivering projects in remote areas as well as cities, the Companies have delivered time and time again.
- Flexibility, integrity and innovation ensure a quality job from start to finish. This focus is combined with the commitment of long serving staff. For example:

For rail reconstruction Barclay Mowlem's team of experienced rail personnel and innovative project managers, backed by an extensive range of construction and maintenance equipment, can deliver any size project on time and within budget. The company is a principal service

provider for track construction throughout Australia, New Zealand and South East Asia with over 30years of experience. Its Austrak subsidiary is a world leader in the design and manufacture of pre-stressed concrete sleepers and associated factories.

- In all areas, the combined experience of long serving staff along with plant and equipment resources, allow the various companies to offer feasibility; design and budget estimates through to “Turnkey” delivery. Harnessing the skills and experience of highly trained staff enables the companies to offer alternative solutions guaranteeing client enhanced quality, cost savings and the best technology available with the earliest delivery.
- Through a wide-ranging experience in a mix of remote areas and urban, civil and infrastructure works, URTh with partners has developed strategic management processes for community and environment management, ensuring URTh access to state of the art technologies and abilities to select the best path with sourcing of the most appropriate companies available within Australia for delivery of:
 - ✓ Infrastructure.
 - ✓ Manufacturing plants.
 - ✓ Building systems and materials.
 - ✓ Services.
 - ✓ Facilities.
 - ✓ Property, asset and facilities management.
 - ✓ Land management.
 - ✓ Tourism industry structures and strategic plans.
 - ✓ Resource management, assessment and development where appropriate.
 - ✓ Good Governance Systems.
- Best practices:
 - ✓ Forestry, horticulture, agriculture, animal husbandry, stock breeding, herd enhancement.
 - ✓ Food integrity, biosecurity, environmental and farm management, range land and wildlife systems.
- Strategically adding value to capital investment decisions and whole of life cycle costings and trade off. Assessing the status quo and selecting the best way to make a difference.
- All leading to asset enhancement, wealth creation for both public and private sector clients aiming for a sustainable future with an enhanced economy and betterment of community life.

Feelings first

LIVE FEELINGS FIRST

KEY PERSONNEL:

Managing Director:	Peter Noel SHEPHERD
Engineering:	Bachelor of Engineering Degree (Honours) Master of Engineering Degree City builder – city engineer for fastest growth area in Australia. Water quality expertise as well as environmental management throughout Asia Pacific region.
Director:	John Edward DOEL
Financial:	Chartered Accountant Business modelling, financial planning and control, market planning and new technology development studies. Technology review of innovative technologies and assessment management as well as implementation and business structuring.
Key Management:	Jim Baker Brian Iverach Graham Golding And many others

Expertise will be accessed from throughout the community of innovative companies that are within the management of Centre for Advanced Technologies (CATs).

Consultants are accessed throughout the building and services industry as appropriate.

INTRODUCTION

The purpose of this document is to provide an outline of the strategy and skills to be involved in the proposed project for the rebuilding of communities and ongoing growth in emerging countries.

Subject to acceptance of the recommendations contained here in, it is considered that the initial step is the completing of a detailed strategic plan, operating structure and schedule covering implementation of programs.

PROJECT STRATEGY

The project is anticipated to include the restoration of essential public infrastructure to meet immediate needs for education, health, safety, sanitation, transport and communications for the community. Strategic planning and implementation of programs to cover the longer term community needs is also required. These long term programs will be based on sustainable development, long term viability and will be reliant on continuing community involvement and self management.

We see the rebuilding of local communities and their ongoing growth as having three stages, namely:

- Short term restoration of public infrastructure and the completion of community audits.
- Strategic planning and community engagement.
- Program delivery, community training and community handovers.

Stage 1

Immediate action will achieve restoration of water, sewerage, power, roads, bridges, communications, health and education facilities.

This will be a short term program to bring relief to the current critical shortage in community services. Extensive community audits of existing services and facilities is also required, together with a strategy to immediately implement priority items.

The identification and planning of community audits is anticipated to take around three months. Restoration works will proceed beyond Stage 1. Critical works having started immediately.

Stage 2

The strategic planning for sustainable longer term community programs as well as facilities and infrastructure development necessary to position communities for future prosperity and self management.

This will involve considerable liaison and inputs from the community (at national, state, county and local levels), and the development of proposals for sustainable programs and facilities to meet agreed community needs.

Stage 3

The implementation of agreed community programs resulting from works completed in Stages 1 & 2 will be staggered. Some key projects may be recommended for implementation during the later part of Stage 1 due to their critical importance to the immediate needs of the community. Others will rank in terms of their importance. Maintenance of longer term frameworks in a number of sectors will be essential.

It is noted that an initial Health Survey as well as Education Survey and building the framework for community engagement are deemed to be of sufficient importance to be elevated to early program initiatives and commenced in Stage 1.

STAGE 1 INITIAL SURVEY & REPORT

The initial community audits are to be carried out to determine the status of public infrastructure such as water, sewerage, power, roads / bridges, communications, health, education, etc. The extent of works and priority given to restore or establish specific necessary facilities will also be outlined. Some items may be identified for immediate commencement. This will deliver some relief for communities.

It is anticipated the initial community audits will take approximately three months to complete. The work will be carried out under the direction of Urban Rural Technopath Pty Ltd by Project Managers responsible to Urban Rural Technopath Pty Ltd (URTh managing director Peter Shepherd). Urban Rural Technopath will be assisted by lead contractors to engage and projects manage the necessary personnel for this stage.

The initial community audits will also form a database from which the later strategic planning and preparation of Master Plans for the various community programs to be developed in Stage 2.

The following personnel will be engaged for the Stage 1 and identification of the scope of works. Refer to Section 4 for an outline of relevant curriculum vitae's and experience.

Item	Team Leaders
Program Director / Chairman	Mr Peter Shepherd
Group Communications Officer	Mr John Doel
Project Manager	
Field Director	
Community Engagement & Ownership	
Water Services	
Sewerage Infrastructure & Process	
Communication Infrastructure	
Roads & Bridges	
Health	
Education	
Treasury	
Industry Development	
Urban Reconstruction Surveying	

Low Cost Housing & Urban Design	
Engineering Infrastructure	
Ground Water Management	
Power Generation & Reticulation	
Renewable Energy	
Urban Reconstruction	
Workforce Training	
Planning & Governance	Mr Peter Shepherd
Natural Resource Management and Land Use	
Forestry & Agriculture	
Fisheries / Aquaculture Management	
Mining & Resource Development	
Support Staff	5 various

The budget estimate for this work is US\$2.5M plus business class air fares and accommodation.

It is strongly recommended that both community health services and community consultation and ownership should be included in the initial survey. A lead specialist and 3 assistants may be required to carry out this work. The additional budget estimate will be US\$0.5M and US\$0.1M for the health survey and community consultation respectively plus business class air fares and accommodation. Overall budget may be US\$3 to US\$5 million.

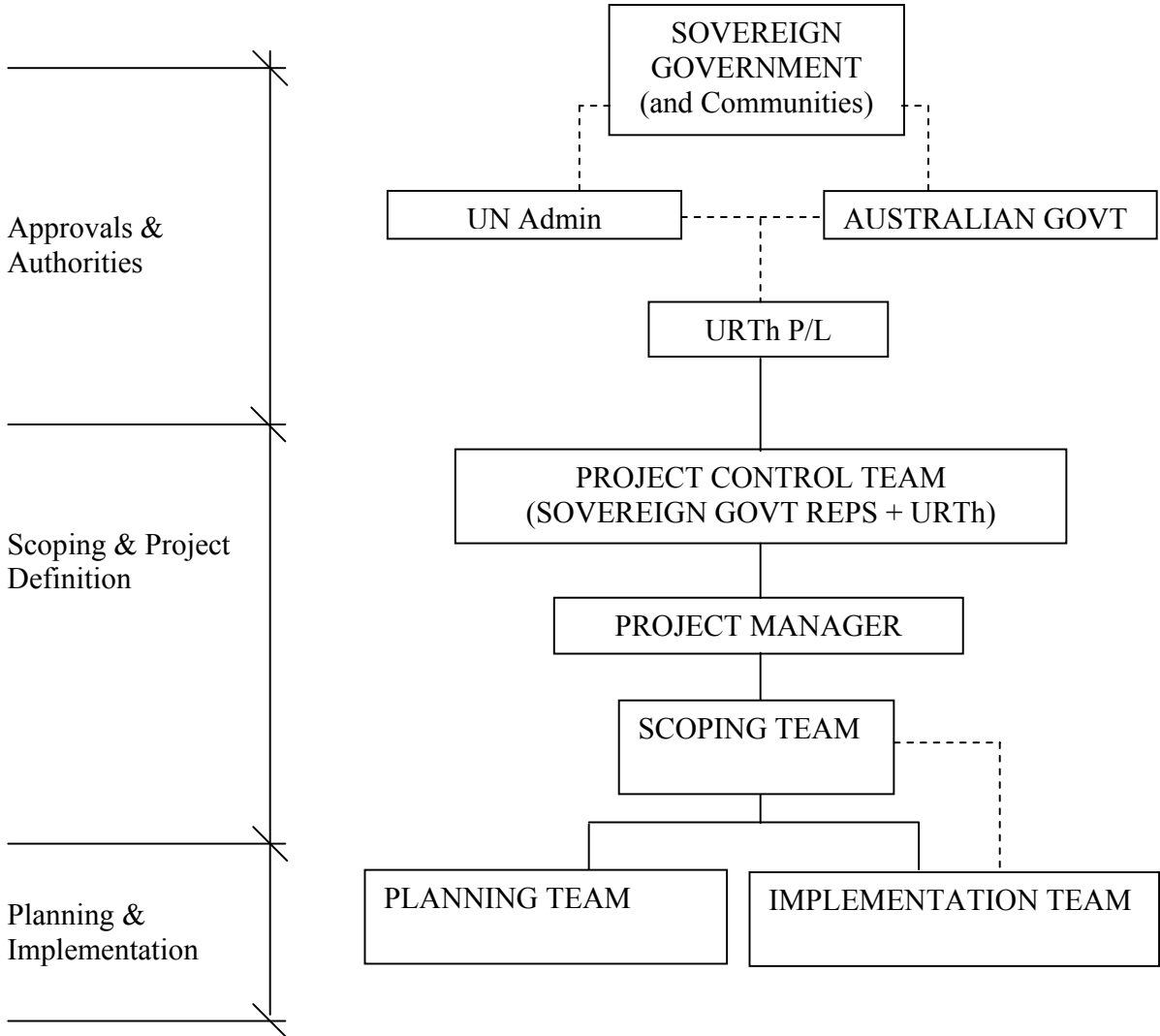
STAGES 2 & 3 KEY PERSONNEL

Key Personnel will be engaged during Stages 1 & 2 to be responsible for the disciplines listed.

Please note that all considered personnel have significant expertise in their field of experience, and many are pre-eminent in their field. Many also have national and international experience in both the public and private sectors. Further resources will be allocated to each Team Leader as necessary as the project develops.

PROJECT STRUCTURE

International agencies and governmental agencies may be involved depending upon the size and complexity of the issues to hand. The anticipated project structure is expected to be as follows:



DETAILED BRIEF

On approval in principle to the Outline Brief, it is recommended that lead contractor be requested to prepare a Detailed Brief for the project.

The Detailed Brief will include but not be limited to the following.

- Background
- Project description
- Intra government communications
- Authorisations to carry out works and services
- Community ownership – liaison and coordination
- Mission Statement
- Key Objectives
- Scope of Works
- Philosophy underlying operations
- Program Strategies
- Staging of programs
- Resource scoping
- Involvement of local community
- Packaging of work
- Project Team Briefs
- Project Team Leaders
- Project Management Structure
- Selection and Appointment of Consultants
- Project Structure
- Project Management Structure
- Approval / Reporting mechanisms
- Community Training and Handover strategy
- Cost Planning
- Implementation Strategy
- Implementation Teams
- Selection & Appointment of Contractors
- Selection and Training of implementation workforce
- Supervision and reporting of implementation activities

- Project Control and Reporting
- Project Financial Analysis and Management
- Financial Control and Reporting
- Appendices
 - Curriculum Vitae
 - Preliminary Gantt Chart
 - Supporting Data

It is anticipated the detailed brief will form part of the work.

ACCEPTANCE OF OUTLINE BRIEF

Please advise whether the outline brief provides sufficient direction and structure to move forward. If so we accept the next step is to proceed with production of a detailed brief as outlined herein. Alternatively, please advise which areas of the outlined brief require amendment or further development.

LOCAL INVOLVEMENT

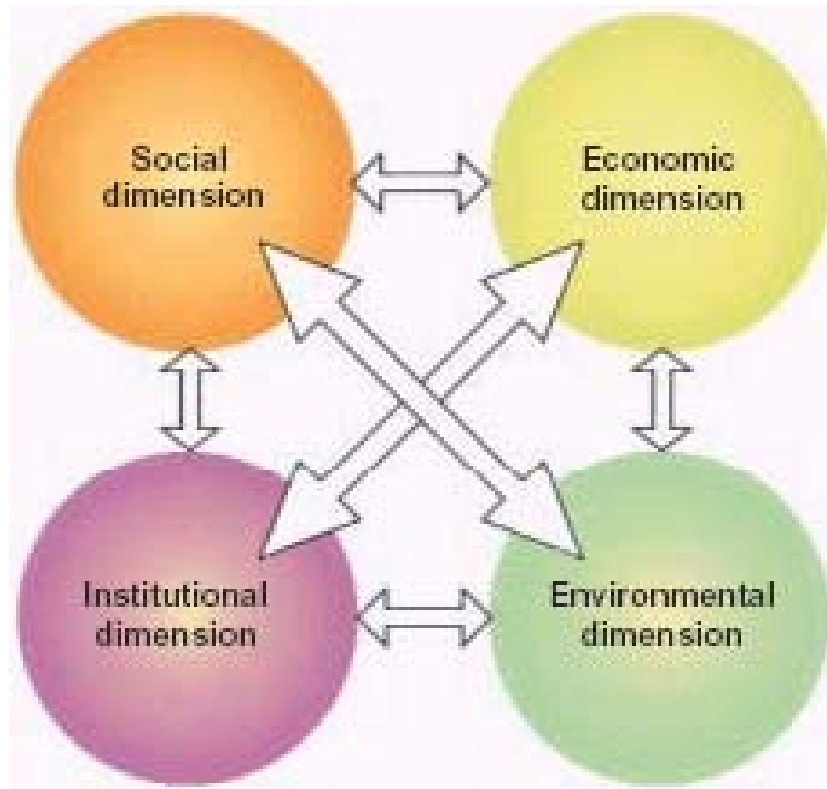
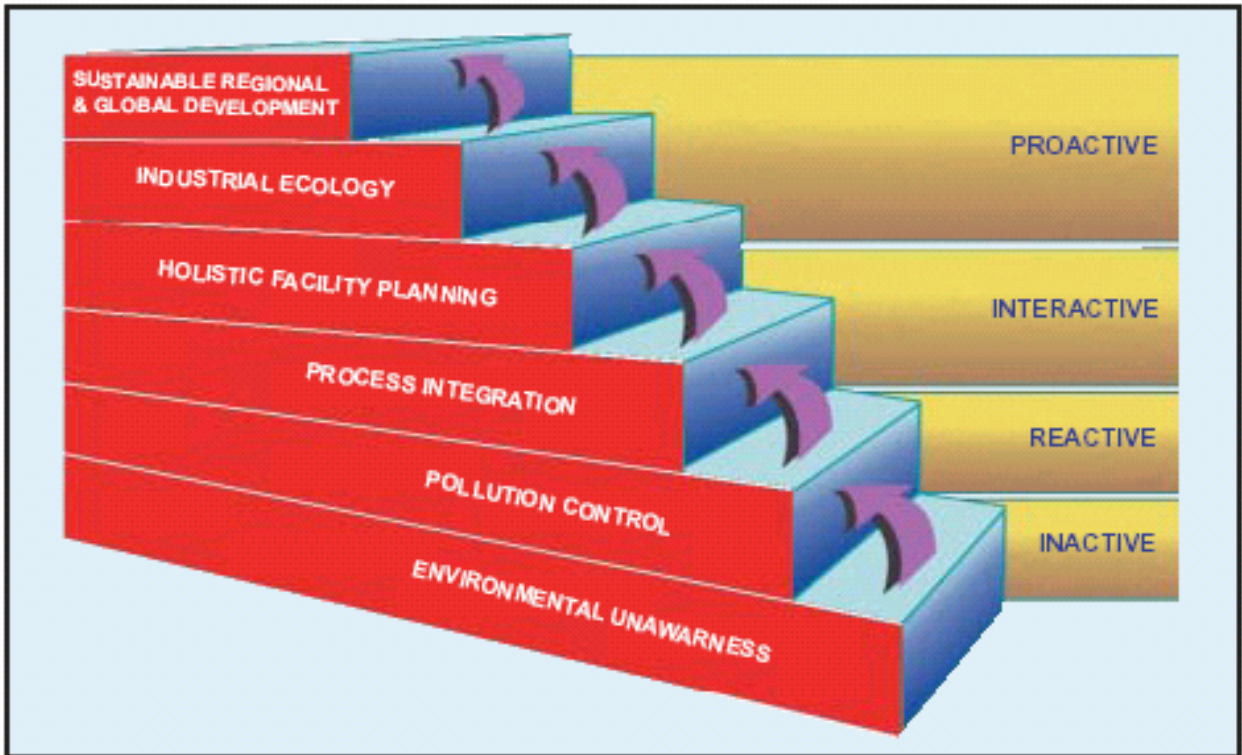
Overarching desire is for the local community to participate as strongly as possible in the conceptualisation of the works to be considered and in the delivery of these works. This is an opportunity for the community in many regards. It is an opportunity for the creation of local skills to be further employed in the many opportunities that unfold from these economic developments. It is also an opportunity for the local community to take ownership of these endeavours and bring about long term financial stability and sustainability of the various aspects of these works for the enduring benefit of the community.

Feelings first

LIVE FEELINGS FIRST

FEELINGS FIRST For Kids

URBAN RURAL TECHNOPATH Pty Ltd is all about Economical Sustainable Communities:



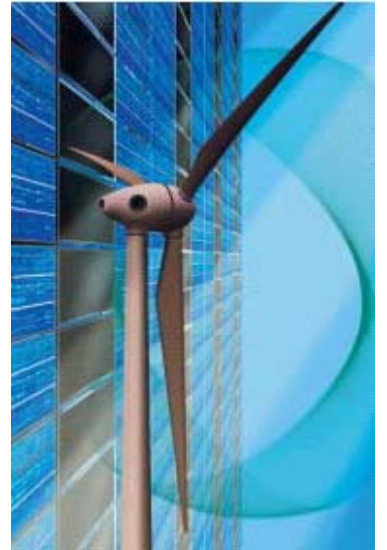
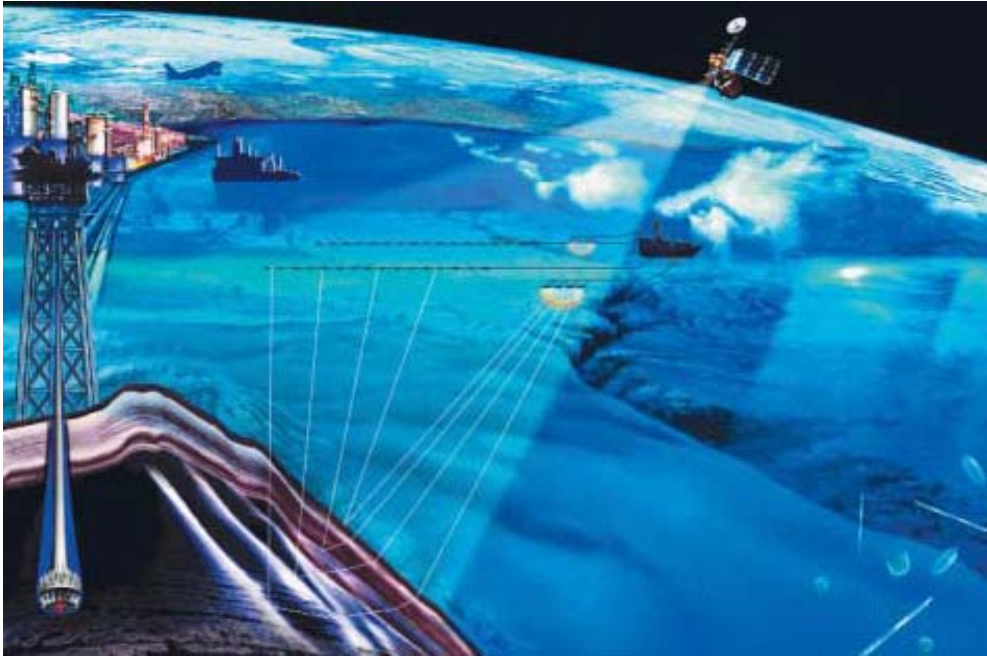
URBAN RURAL TECHNOPATH Pty Ltd initiatives supports URBAN RENEWAL:



URBAN RURAL TECHNOPATH Pty Ltd initiatives supports RURAL RENEWAL:



URBAN RURAL TECHNOPATH Pty Ltd initiatives DEVELOP RESOURCES:



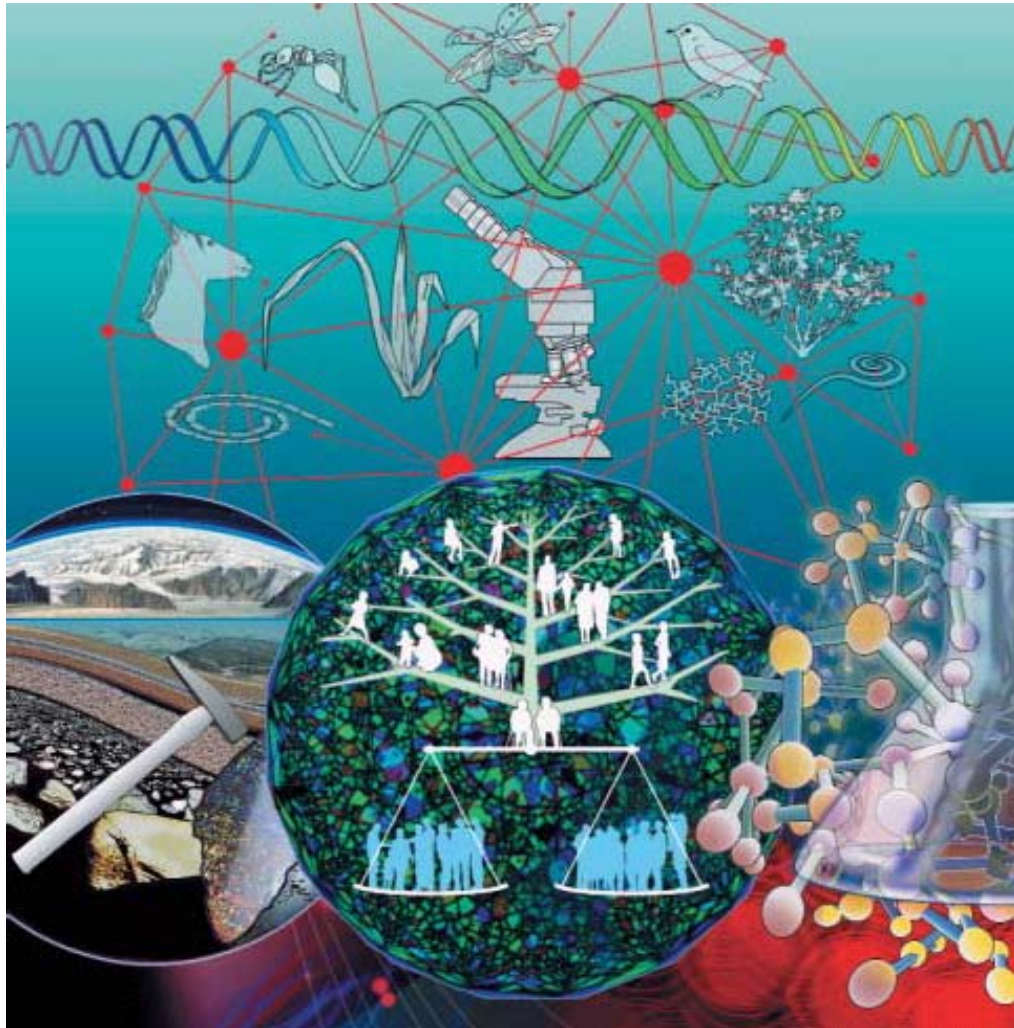
URBAN RURAL TECHNOPATH Pty Ltd initiatives DEVELOPS AGRICULTURE:



SOIL = ABIOTIC parts of soil + BIOTIC parts of soil



URBAN RURAL TECHNOPATH Pty Ltd is all about a sustainable industrial future:



City Water Supply, Sewage, Drainage & Solid Waste optimisation of asset strategy

Consulting Engineers are to submit an Optimisation of Asset Strategy to provide Professional Engineering Services.

This proposal is for a modelling and concept study that includes:

- Central sewage facility.
- Decentralised sewage facilities.
- Conversion of sewage to organic fertiliser.
- Conversion of sewage to gas.
- Drainage garbage collection system.
- Garbage collection system.
- Conversion of organic and plastics garbage to gas.
- Sewage and garbage gas electric power generation.
- Waste water disinfection.
- Waste water recycling.
- Tube well requirements.
- Water supply.
- Cogeneration.
- Energy pricing.
- Energy distribution.
- Hot water production.
- District cooling.
- Carbon credit trading.
- Future planning.

BACKGROUND

Most Cities' water supply system is being contaminated by human sewage.

The strategy is to eliminate this pollution and in the process convert the pollution to a resource.

The preliminary analysis allows for waste water disinfection only. Desalination would be considered as part of the study.

DESIGN PHILOSOPHIES

“OASIS” INTEGRATED ASSET STRATEGY

The opportunity exists to collect sewage and garbage, which can be used to generate revenue. This revenue can then be used to fund part or all of the project. While it is not normal to provide the following information in a proposal we feel it is paramount to emphasise the benefit of the Optimisation strategy to the City and to the Nation.

The “OASIS” approach is an acronym for “*Optimisation of Assets Strategy and Integration of Services*”.

The optimum strategy requires to be developed at the Model Strategy Phase. This will have a major influence on the initial capital investment and subsequent operating cost. It is not feasible or appropriate to proceed direct to Concept Design as this implies the immediate selection of one system, without fully evaluating the cost / benefits of each of the options developed within the Model Strategy Phase.

The approach includes a process of Pre-planning and Concept Designs during which the Model Strategy Analysis is undertaken to ensure proper feasibility analysis is completed. In this instance, a range of concepts can be developed to meet agreed Project Philosophies. The Client functional requirements will form the basis of the concept requirements and will not be compromised.

An approximation of the financial benefit of producing electric power and organic fertiliser from sewage and organic garbage can be developed. This is not to be read as the optimum solution since decentralised / centralised plants and the combination of power production and organic fertiliser production is to be fully assessed during the study.

The complete study is to take into account:

- Garbage collection and operating cost.
- Sewage collection and operating cost.
- Procurement of land.
- Electric power distribution.
- Electric rate escalation.
- Infrastructure.

It could be argued that some of the above are necessary for the benefit of the population regardless of waste revenue stream infrastructure cost. These issues can be dealt with in detail in the study.

It is obvious however, that currently the city / community may be faced with a substantial loan for the services currently being implemented. The Optimisation Strategy will provide a solution to achieve a good portion of the funds required for that work.

There will be a benefit identified in reduced medical costs due to a cleaner environment and clean water.

EDUCATION and DEVELOPMENT of SOUL CONDITION / LOCAL HARMONY:

The growth of one's soul condition, consciousness, is the one single underlying way to bring about economic growth, harmony, well being, physical health and prosperity into any community. The costs to bring this about is the time involved in engaging people in how to simply go about living with the Love and embracing the greatest gift in the universe. The benefits can be simply identified through the use of kinesiology muscle testing as introduced by Dr David R Hawkins in conjunction with his Map of Consciousness. The tables below identify the benefits. There is no greater development that could be introduced to a community than this universal way forward for humanity. It is not faith or religious based, it is spiritual and universal in all its aspects.

MoC	No. of Countries	Average MoC	Average Life Expectancy	Per Capita Income 2013
400s	10	406	78.50	US\$46,690
300s	13	331	71.77	US\$20,508
200s	10	232	69.45	US\$14,927
High 100s	18	176	69.00	US\$12,283
Low 100s	7	129	61.88	US\$6,560
Below 100	11	66	52.73	US\$5,500
WORLD		212	70	US\$13,100

Correlation of Levels of Consciousness – Soul Condition – and Society Problems				
Level of Consciousness	Rate of Unemployment	Rate of Poverty	Happiness Rate "Life is OK"	Rate of Criminality
600 +	0%	0.0%	100%	0.0%
500 - 600	0%	0.0%	98%	0.5%
400 - 500	2%	0.5%	79%	2.0%
300 - 400	7%	1.0%	70%	5.0%
200 - 300	8%	1.5%	60%	9.0%
100 - 200	50%	22.0%	15%	50.0%
50 - 100	75%	40.0%	2%	91.0%
< 50	95%	65.0%	0%	98.0%

Note:

The Map of Consciousness (MoC) table is based on the common log of 10. It is not a numeric table.
 A calibration increase of 1 point is in fact a 10 fold increase in energy.
 A calibration increase of 10 points is in fact a 10,000,000,000 fold increase in energy.
 Thus the energy differentials are in fact enormous!

**Udo Erasmus CHOICE FOOD PYRAMID:
HEALTHY PEOPLE**

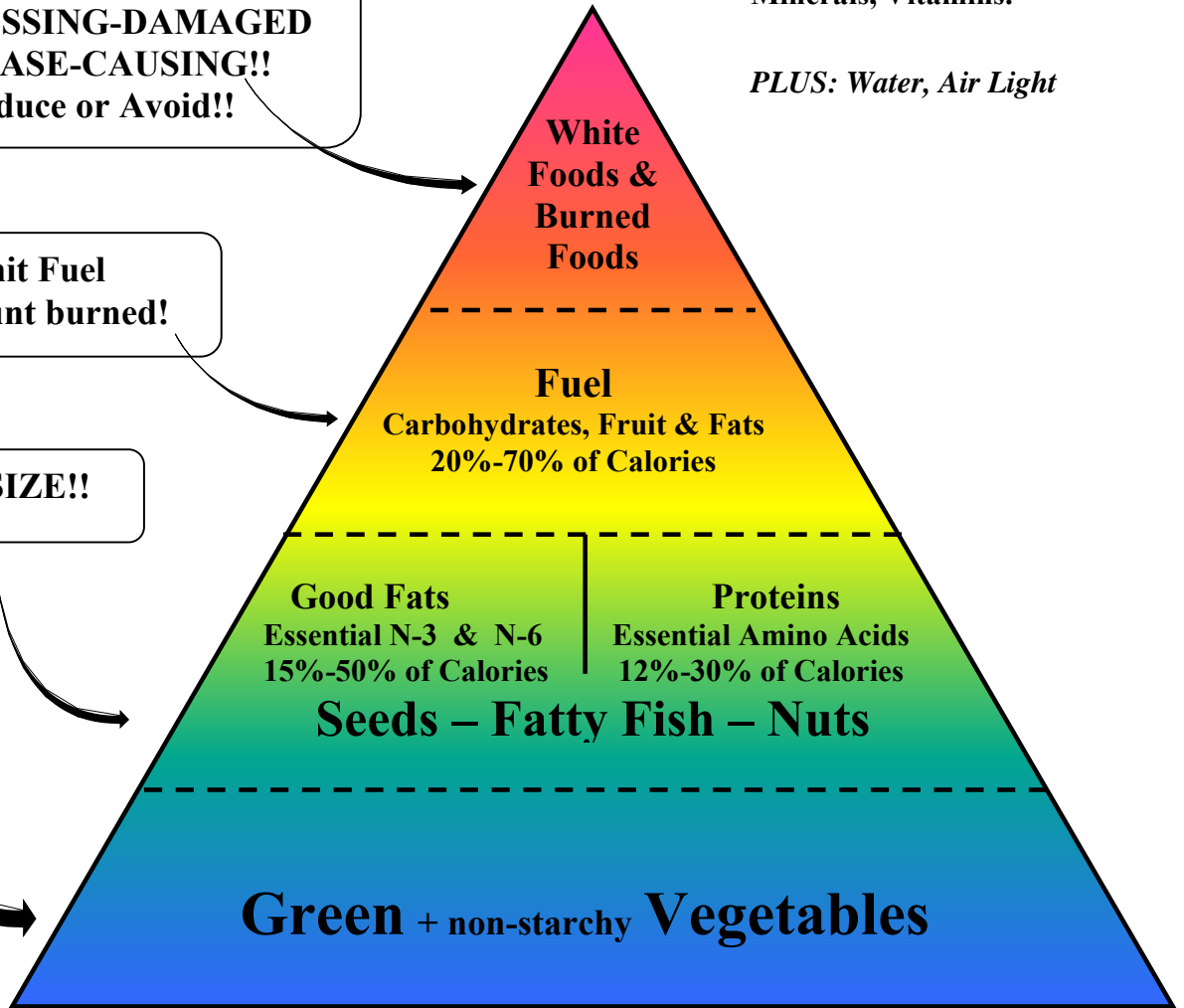
SUPPLEMENTS:
Digestive Enzymes,
Probiotics, Antioxidants,
Fibre, Phytonutrients,
Minerals, Vitamins.

PLUS: Water, Air Light

**NUTRIENT – DEFICIENT
PROCESSING-DAMAGED
DISEASE-CAUSING!!
Reduce or Avoid!!**

**Limit Fuel
to amount burned!**

EMPHASIZE!!



Udo's Choice™ Food Pyramid

Illustrates health food choices as forming the base or bottom.

As you proceed higher on the pyramid, you encounter foods that present more of an obstacle to digestion and metabolism.

Fresh is Best!

PASCAS WORLDCARE



CARE + 3 HALVES



Education



Nutrition



Emotional
Release



SUMMATION:

With every action that you are about to consider or undertake, ask yourself: **Is it loving?**

Goals of Pascas WorldCare and Urban Rural Technopath are marked by our desire to:

Treat the cause rather than the symptoms; this is the focus of Pascas Care.

People look for miracles to cure disease which is ONLY the removal of the effect of the emotion.

Further stated policy, Pascas Care – Kids of the World:

The greatest gift for our children that we could possibly provide is to enable for them to grow up without fear.

Yes, a child who is free of fear is free of illness.

**PASCAS
PERS**



The only aid that really helps to repair damage is aid that gives the hungry a future as well as a meal today. Emergency aid is vital but it must be linked to long-term improvements in the life situations of the hungry.

One of the ways in which help is most needed is in the area of education in its widest meaning.

A plan to follow:

1. **Effective aid is often a package of measures.**
2. **Effective aid is organised in partnership with the local people.**
3. **Effective aid comes more often from agencies at work than from government aid.**
4. **Effective aid is concerned with making repairs and improvements that are sustainable.**

In this manner we are to deploy all the resources of Urban Rural Technopath, Pascas Care, New Biosphere Agriculture, Chaldi College, Pascas University and all of the technologies being made available through Pascas WorldCare as considered appropriate, for the long term benefit of the communities that we are invited into.

URBAN RURAL TECHNOPATH Pty Ltd

Urban Rural Technopath Pty Ltd (URTh) provides multidisciplinary and comprehensive professional services that enables new technology installations and health sciences in remote areas to succeed.

URTh is to rationalise existing resources within the remote community, its needs, and the opportunities available through the extensive range of innovations and technologies that have been assembled by URTh's companion entity, Centre for Advanced Technologies (CATs).

Given consensus on the program to be initiated, URTh is to project manage the infrastructure development and the installation and commissioning of the appropriate new technologies and industries for the remote community and region.



CATsberg symbolically is a good representation of the undiscovered potential in us all.

Most often it takes another person with an uncluttered but observant mind to see what has escaped many of us. A breakthrough concept or perhaps new approaches otherwise hidden from our perception.

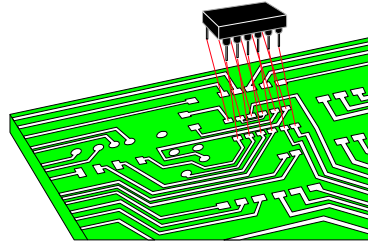
It is common to reach for the telephone to call an associate for an opinion. Less common is the ability to feel completely at ease with a stranger who has our best interest at heart.

CATsberg is our symbol to introduce to you that the Centre for Advanced Technologies (CATs) is here to share the journey through your business and personal life in a way that can make a difference to you and the way you feel as you grow your intellectual property.

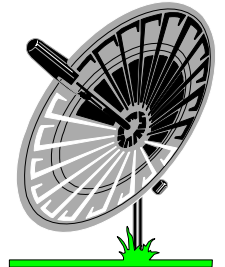
PASCAS CARE CENTRE will facilitate the introduction of new technologies into communities where PASCAS has facilities. PASCAS will make available from within its regional premises, offices, communications and training facilities to enable growth of employment and prosperity to be accessible to its constituents, be they patients or local regional residents. New technologies will be introduced through the separate management of URBAN RURAL TECHNOPATH who will draw on new innovations from around the globe, such as CENTRE for ADVANCED TECHNOLOGIES.

CAT'S SCIENTIFIC ENVIRONMENTALLY SUSTAINABLE INNOVATIONS:

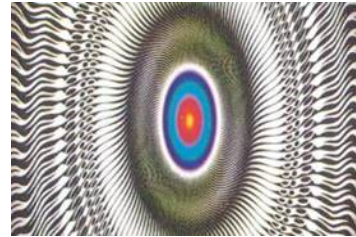
- Administered technologies



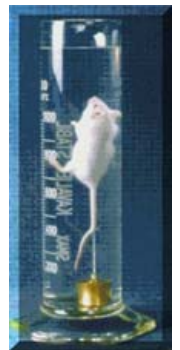
- Communications



- Energy



- Complementary Medicine



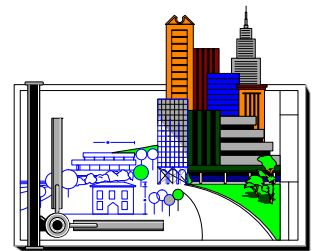
- Agriculture



- Food



- Housing



- Environmental



- Resources



“Never can one man do more for another man than by making it known of the availability of the Feeling Healing process and Divine Love.” JD



CREATION of SOUL and SPIRIT:

God is *The Paradise Trinity* — the eternal Deity union of the Personalities: the Universal Mother and Father; the Eternal Son of Truth; and the Infinite Daughter Spirit of Mind.

The soul of each human personality (sons and daughters of truth) is existential, driving our personality expression in the experiential. The soul of each human finds truth by embracing one’s feelings and longing for the truth of them. We are to attain the Eternal Son of Truth. We are a creation of Truth.

The soul of angels is experiential, evolving through their experience by continually progressing in mind development. Angels are to attain the Infinite Daughter (Spirit) of Mind. Angels are a creation of Mind. Our soul is duplex (we have a soulmate) and is created by our Heavenly Parents. Through our Feeling Healing we perfect ourselves enabling the union with our soulmate, as we progress in truth up through the Mansion Worlds, celestial heavens and all the way to Paradise.

The soul of angels is also duplex, yet of the mind, and they progress in mind evolution to Paradise. Animals, plants and nature spirits are also creations of Mind.

Neither we nor animals reincarnate. We never die; upon death, we move into the spirit Mansion Worlds on our journey to Paradise. When animals and plants die, be they the tiny microbe to the mighty elephants of the land and the whales of the ocean, their spirit energy returns to the Spirit Collective Energy. And from this energy are drawn other animals and the nature spirits, who then in turn move onto becoming angels through increasing mind experience.

A nature spirit is an angel in waiting.

WE EACH have a Nature Spirit pair, Spirit Guide pair and an Angelic Pair:

For those doing their Healing or are interested in doing it will from that time have their own personal angels, spirit guides and nature spirits with them, with whom they are to develop their own relationships should they want to. It is not about 'sharing' the same angels or guides or nature spirits, it is about you relating specifically to your 'own' ones because they are provided for YOU. It's all for you, to maximise the experiences we each need.



We are all to have our own pure relationships. And it's the same of course in life with your friends, however over there, in spirit, dealing with Nature Spirits, Spirit Guides, and Angels, it's more personal and private and 'JUST FOR YOU'. So we have our own separate, unique relationships.

For example, Nature Spirit Verna has been assigned to be specifically and only with James, and she ain't going to be assigned to anyone else, so she won't be sharing herself around.

This is SO IMPORTANT to understand so that in future there won't be all these people claiming to be speaking with Verna or Mary Magdalene or Jesus or Nanna Beth or anyone else who is part of it all in such capacity. Mary M and Jesus have spoken with James as they have, making it quite clear he is all they are speaking with.

We each have a band of a Nature Spirit pair, Spirit Guide pair, and an Angelic pair, each pair being in their 'soulmate' relationship. Even though we are ascending mortals having a soulmate, even our soulmate has his or her own group of six personalities assisting him or her. Our assigned Nature Spirits do not continue with us into spirit, our Spirit Guides may for a time assist upon entry to the spirit Mansion Worlds, however, our personal Angelic pair continues with us to Paradise, and then even possibly being with us throughout eternity.



Feelings first

OUR GUIDANCE to PARADISE, the home of our HEAVENLY PARENTS:

There are three distinct phases of our progression to the home of our Heavenly Parents which is Paradise that is within the circle of seven Super Universes, each containing many Local Universes.

Once we progress beyond our Local Universe of Nebadon, then we are assisted and guided by our Heavenly Parents, our true Mother and Father all the way home to Paradise.

Before then, once we have completed our soul healing, we are guided through the Celestial Heaven worlds which are those that interact with humanity on Earth, then further on into and then out through Nebadon, our Local Universe. The regents of Nebadon are Mary and Jesus.

However, before then, we are to embrace our healing. That is, we are to realise who we truly are. We are not the personalities that our parents imposed upon us. We are to put aside our childhood suppression and repression and free our true personality that our Heavenly Parents gave us, and to do this we are now able to embrace the guidance of the Avonal Pair who will lead us through our healing here on Earth and through the Spirit Mansion Worlds to be able to enter the Celestial Heavens.



WE ALL ARE BEING GUIDED HOME:

We need the Spirits of Truth of the Avonal Pair to Heal ourselves; then once Healed, (and for support (overshadowing) as well through your Healing), we need the Creator Pair, Mary Magdalene and Jesus' Spirits of Truth to see us through the Celestial spheres, while at all times embracing our Heavenly Mother and Father.

Until Mary and Jesus died and liberated their Spirits of Truth, no one from any of the worlds could leave Nebadon, because no one knew the way to do so. Nebadon is our local universe containing some 3.8 million inhabited physical worlds and their associated spirit worlds.

When we embrace the truths Mary and Jesus are revealing, and start to do our Feeling Healing, or with Divine Love, Soul Healing, we are then freeing ourselves up from our parental and self control.

Thus our journey to Paradise, to the home of our Heavenly Parents, is of our choosing as to when we progress, however, there is only one way:

HUM: Humanity is to ascend. We are self contained. Our soul is always in truth and perfect at all times. **By living true to ourself, true to our feelings, we are living true to God. It's that simple.**

We are to recognise that being engaged and dominated by our mind is the wrong way for us to evolve and grow in truth. We are to discard the mind enslavement that has been imposed upon as by all of our parents. We are to express our feelings, both good and bad and free ourselves of the indoctrination that humanity has embraced worldwide.

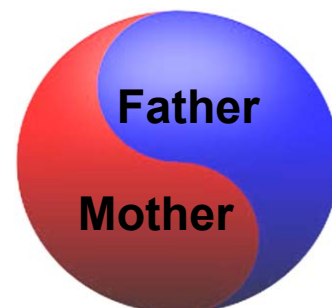
Live true to your feelings, and you ARE living true, not only to your own soul, but also true to God's soul. So doing your Healing by honouring all your feelings, IS living the will of God. And being fully Healed, IS living even more truly the Will of our Mother and Father.

AVO: We are to embrace the truths and guidance of the Avonal Pair through their Spirits of Truth. It is the Avonal Pair's guidance that will lead us through our Feeling Healing, and with Divine Love, we will be able to ascend through the 7 spirit Mansion Worlds and enter the Celestial Heavens where we also interact with other world's spirits.

J&M: We are also to embrace the truths and guidance of the Paradise Pair, Mary and Jesus, who will then lead us through the 3 Celestial Heavens that are aligned with Earth, and then further on through Nebadon where we will then depart beyond on towards Paradise.

M&F: Beyond the universal zone of Nebadon, we will be guided by our Heavenly Mother and Father onwards through the universes to Paradise where we will be welcomed by them, home for us all, as we are all Children of God.

GOD



M&F



J&M



AVO

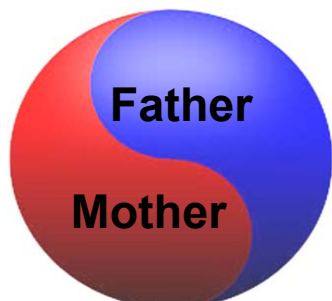


HUM

WE ARE Children of God

WE ALL ARE BEING GUIDED HOME – NOW, HOW TO COMMENCE THE JOURNEY:

GOD



M&F

For 200,000 years, we have been misled into embracing our mind's distortion of wisdom and truth. All such traditional understandings only lead us in the wrong direction, from which we must turn back from. Our soul based feelings are always in truth. Our minds are to follow our soul based truths and feelings, not the other way round, as we have been brought up to embrace.

We are to connect with our deeper repressed feelings.
We are to long for the truth of what we are feeling.
We are to live true to our selves; by living true to our feelings.

Use your surface day-to-day feelings to connect with your deeper repressed feelings. Express your surface feelings and your deeper repressed feelings to uncover the truth of yourself.



J&M

We all have feelings which we communicate and share with each other. And we all have deeper buried and hidden repressed feelings. Feelings from our early childhood we felt, yet weren't allowed to express. These feelings are still within us, waiting to have their say. These feelings, because they are repressed, cause us all our problems.

And as we look to uncover, bring out and accept these deeper feelings, so we're taken into new ways of looking at ourselves, our feelings, and our life. We're setting ourselves free of the controlling patterns that govern our unloving behaviour.



In this way, we progressively begin to express the personality that our Heavenly Mother and Father gave us, not the one imposed upon us by our physical parents and carers. We are to be our true and real selves.

By living true to ourself, true to our feelings, we are living true to God. It's that simple.

AVO



As we, humanity, long for the truth of our feelings, we can also be assisted by the Spirits of Truth of the Avonal Pair who are our spiritual teachers for Earth over this coming 1,000 years, to assist us through the Great U-Turn, away from mind dominance to being soul based feeling lead. They will assist us through the seven levels of the spirit Mansion Worlds.

Then the Creator Pair, Jesus and Mary, will lead us through Nebadon and into the greater universe. Then our Heavenly Mother and Father lead us home to Paradise.

HUM
WE ARE Children of God

Collectively, should we embrace them all, as we are to, then our pathway home is a journey in the hands of the Spirits of Truth of the Avonal and Paradise Pairs overseen by our Heavenly Parents.

Feelings First Spirituality The New Way

Feelings First
FF
Feeling Free

The New Way, Feelings First Spirituality
Learn to live with God through your Feelings

Accept, express and long for the truth of your feelings

Be free in your feelings
Free your feelings from your mind's control
Live true to your feelings; your feelings are your true self
Live true to yourself through your feelings



Live true to yourself by living true to your feelings.
Long for the truth of your feelings.

Accept / Express / Bring out ALL of your good, and most importantly,
BAD feelings.
Want to understand why you're feeling them.
Use your surface feelings to take you deeper into your repressed and
hidden feelings.



The Feeling Way is the True Way.
Your feelings are your spiritual guide.
Your feelings will take you to God.



Your feelings will show you the truth of your relationships, including your relationship with God; and if anything is wrong, untrue and unloving, then why it is.

Our feelings are sacrosanct and we should respect them accordingly. And we should NEVER block them out, ignore, override, banish, deny or reject them, because if we do, we're only doing that to ourselves, as Our Feelings Are Our Self.

Our feelings are the gateway to our soul. Our feelings are the closest we can get to our soul. Knowing the truth of our feelings is knowing the truth of our soul, and knowing the truth of God.

Feelings First Spirituality is the True path for humanity.

It embraces all people.

It completely unifies the world.

Everyone can relate to everyone else through their feelings.

And we can all live the truth that comes from our feelings, all sharing the same truths as we express and have the same feelings.

No one need be left out; no one is more special than anyone else – we are all united in Truth through our feelings.

So with and through our truth we live our lives, therefore without the need of any man-made mind-laws, rules and restrictions that limit self-expression as inspired by our feelings.



The New Way, Feelings First Spirituality is what is to replace all man-made, mind-contrived religions that so many people have enslaved themselves to. The New Way, Feelings First Spirituality will set us free of all that control, ending the Rebellion and Default within ourselves as we do our Feeling-Healing, and ending such control and spiritual stagnation in the world.

Bring on the End Times – get it over and done with! Let's all see that Jesus is not going to come again, that Prophecy has failed all the mind-controlled platforms. Allow such false systems of belief to die their long-awaited natural death, they've overstayed their welcome, it's now time they fade away. So let us show such antiquated, erroneous systems of belief the exit and bring on the fresh liberation of discovering the truth of how we are to live for ourselves, each of us personally in our lives, and all by looking to our own feelings for it. Self-revelation through our feelings is the way to go.

The Way of the Mind is ending, and is really the End Times – the End of our mind control, and **it's**

about time! With the Way of our Feelings replacing it.

The End Times means the end and therefore a New Beginning. And that new beginning is a whole new Spiritual Age – an age based on self-revelation of truth through one’s feelings, coupled with and supported by higher revelations from the Celestial spirits, angels and nature spirits.



The Feelings First Spirituality is the True Way to God because it helps you get to know God, helping you to reach out, connect and be personal with God, and do God’s Will, all through your feelings. It is the only true way of getting to know the God of Feelings – our beloved Heavenly Mother and Father, the Great Soul of Divine Love.

Love comes through our feelings and not our mind, as we’ve all been wrongly led to believe.

Feelings First; then comes The Truth; then comes Love.

LOVE is the Religion of Feelings, being:

Feelings First Spirituality, The New Way



my
House is your
Paradise
 **HOME**

Pascas Care Centre



PASCAS CARE – THREE UNITS IN ONE:

PASCAS CARE CENTRE	Pascas Cafe <i>with</i> Raw Power!
	CHALDI COLLEGE

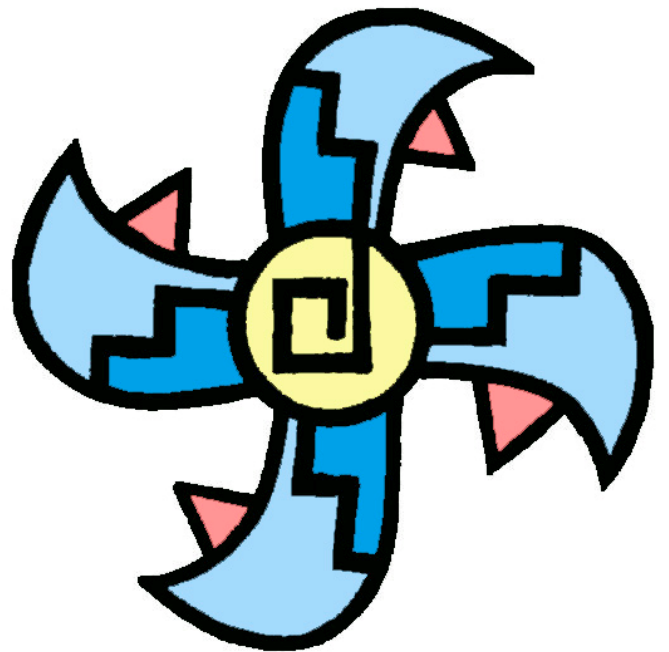
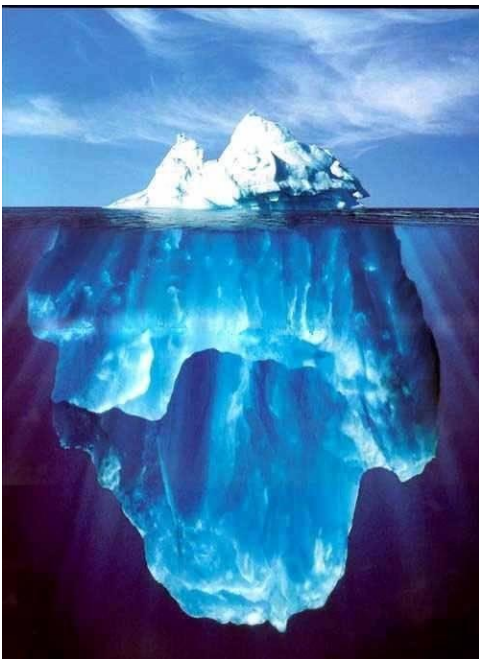
**PASCAS
HEALTH**



**Medical Clinic
Consultations
Day Care
Treatment**

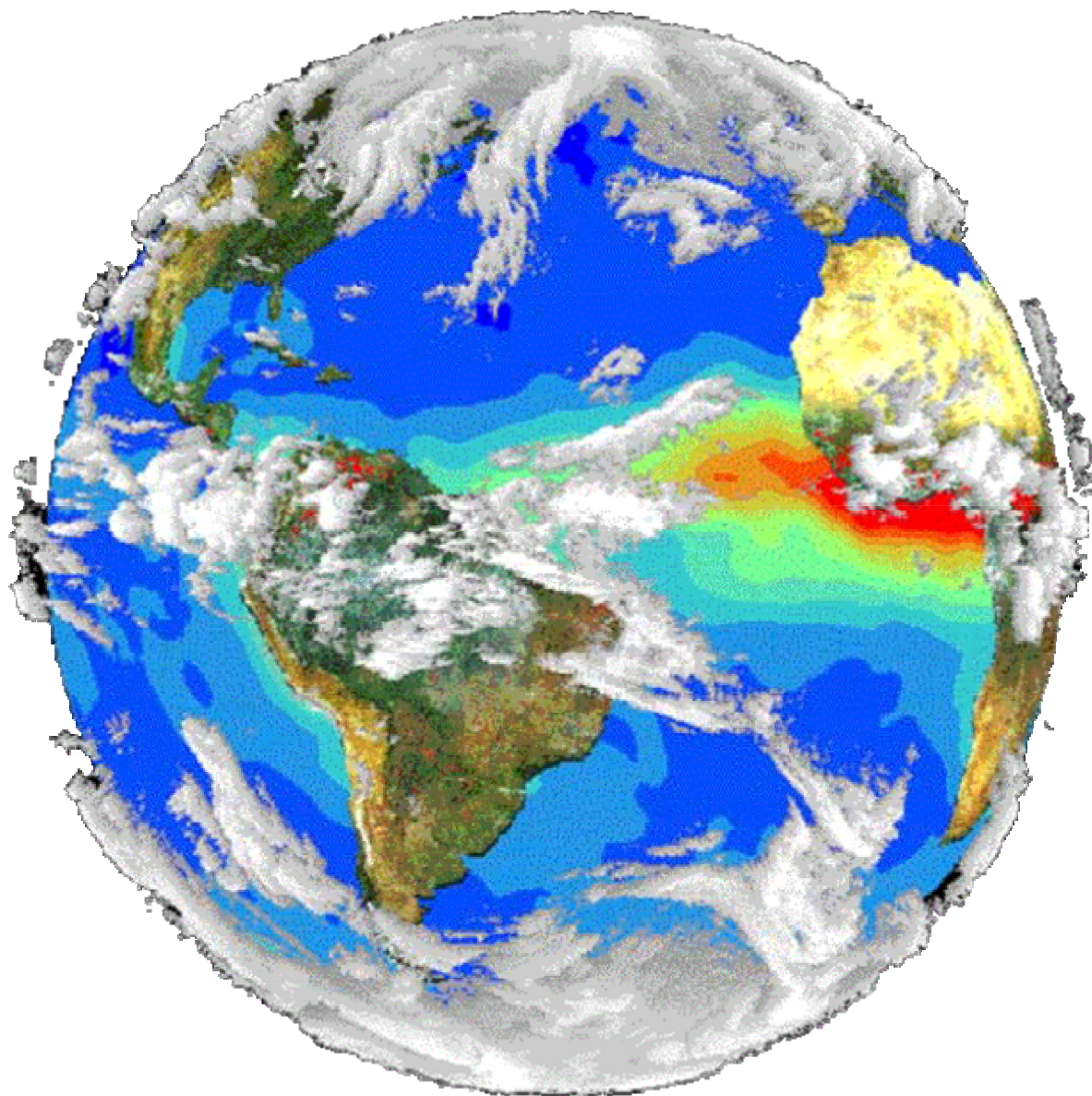


Chaldi Knowledge Centre



**Beacons
of Light
around
the globe**





Our Earth, our home is such a beautiful wonderful place! Enjoy.

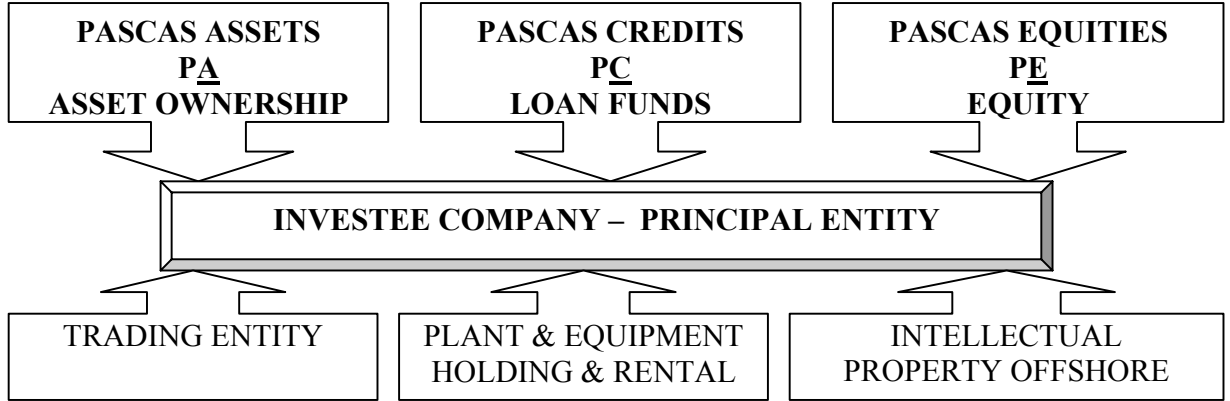
<http://www.pascashealth.com/index.php/library.html>

Library Downloads – Pascas Papers

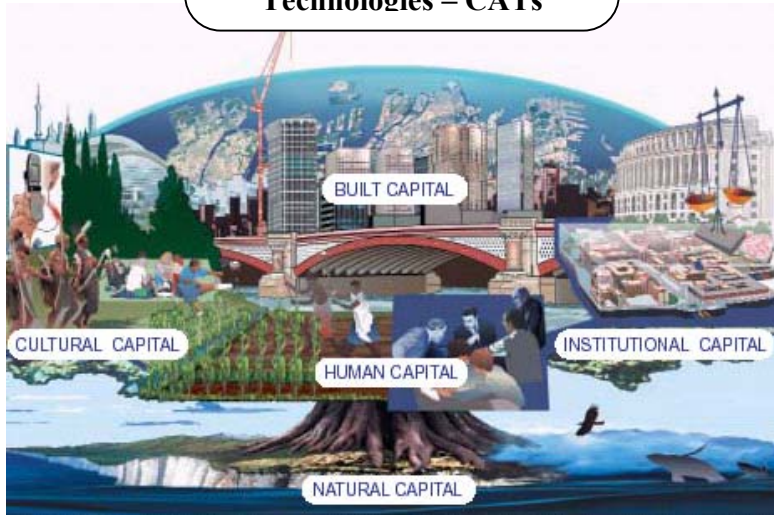
All papers may be freely shared. The fortnightly mailouts are free to all, to be added into the mailout list, kindly provide your email address.

info@pascashealth.com

PASCAS WORLDCARE Ltd



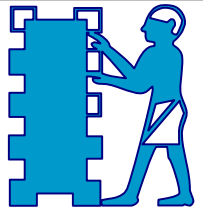
PASCAS WORLDCARE
agenda
supported by
**Centre for Advanced
Technologies – CATs**



**INNOVATION &
TECHNOLOGY
DEVELOPMENT**



**REMOTE AREA
TECHNOLOGIES
RATs**



**CENTRE for ADVANCED
TECHNOLOGIES
CATs
PROTECTS the MONEY BOXES**



**URBAN RURAL TECHNOPATH
URTh
PROJECT MANAGER of PASCAS
NATION BUILDING PROGRAMS**

**PASCAS FOUNDATION
PF
HUMANITARIAN**

**PASCAS WORLDCARE
PW
NATION BUILDING**