

PASCAS CARE

Educators Bridging to Feeling Healing



“Peace And Spirit Creating Alternative Solutions”

**PASCAS FOUNDATION (Aust) Ltd
ABN 23 133 271 593**

**Em: info@pascasworldcare.com
Em: info@pascashealth.com**

**Pascas Foundation is a not for profit organisation
Queensland, Australia**

www.pascasworldcare.com www.pascashealth.com

Pascas Care Educators Bridging to Feeling Healing

It is recognised and very much appreciated the acquired skills of those embracing and supporting millions of people being also in their quests for healing in the very numerous forms and ways that are being provided.

Until as recently as 31 January 2018 when formally the “Rebellion and Default” was ended with the withdrawal of the Universal Contract governing this event that has been imposed upon Earth’s humanity for the past 200,000 years, all modalities that practitioners have been engaged in have perpetrated the imposts of the “Rebellion and Default”. They had all continued with the striving for the perfection of the mind.

We all learn in differing ways, we all express ourselves in differing ways, we are each a unique personality. There is no way that any two people will introduce and share information the same way and that is one of pleasures of life, the diversity of experiences that we have in similar situations.

We are to aspire, strive, long for truth and then bridge across from our past experiences to the new, The New Way, and that is to embrace our feelings, our soul based feelings that are always in truth and then have our mind in support to engage in what our feelings are leading and guiding us to consider. After 200,000 years of living mind-centric, this is a giganteum shift for all of humanity, as it is for each and every one of us.

This may feel like abandoning all that we have embraced throughout our life, and yes it is. However, as we rebuild our understandings, the freedom that unfolds for us is beyond amazing. Then we may observe that it is like the ten ducks in a row, there has always been one that had been deceiving us.

Ten ducks in a row, but one always misleading or misled!



Our past achievements won’t be lost, we will find that they have a differing aspect in our appreciations. We are truth seekers and that has been withheld from us by covert control for thousands and thousands of years and now that hidden control has been dismantled and it is they that will pay the price!

Higher level personalities are presently making known through their own demonstration of how we are to live, The New Way, and that embraces our Feeling Healing. Yes, we will find that many of us have approached this way but none of us have gone deeply enough to be successful. We are too long to know the truth behind what our feelings are drawing our attention to. And then some more! This is what we are now sharing.

REVEALERS

It is only appropriate for adults to delve deeply, thus it could be said that awareness is to be provided for children aged 5 / 6 years to 10 years, then a broader understanding for age years 11 to 16, then as adults (girls aged 14 onwards) a comprehensive awareness and understanding be open to all. No one is obliged to do anything. Everyone has a uniqueness. From 18 / 19 onwards then all are adults.

However, no prior information or modality has contained the required revelations now available. Thus, Feeling Healing is NOT like any prior guidance and awareness. For people to retain their independence, talks given by educators are to be available in print prior to a session.

MAP OF CONSCIOUSNESS

Map of Consciousness from Dr David R Hawkins, M.D., Ph.D. "Power vs Force".

Level	Log
ENLIGHTENMENT	700-1000
PEACE	600
JOY	540
LOVE	500
REASON	400
ACCEPTANCE	350
WILLINGNESS	310
NEUTRALITY	250
COURAGE	200
PRIDE	175
ANGER	150
DESIRE	125
FEAR	100
GRIEF	75
APATHY	50
GUILT	30
SHAME	20

PERSONALITY TRAITS:

Less than two dozen people on planet Earth.

Would not pick up a weapon let alone use it. These people gravitate to the health industry and humanitarian programs.

Debate and implement resolutions without argument and delay. 470

Debate and implement resolutions in due course. 440

Debate and implement resolutions with some degree of follow up generally needed. 410

Management supervision is generally necessary.

Politics become the hope for man's salvation.

Cause no harm to others starts to emerge. Power overrides force.

Illness is developed by those man erroneous emotions that calibrate 200 and lower.

Armies around the world function on pride. Force is now dominant, not power.

Harm of others prevails, self-interest prevails.

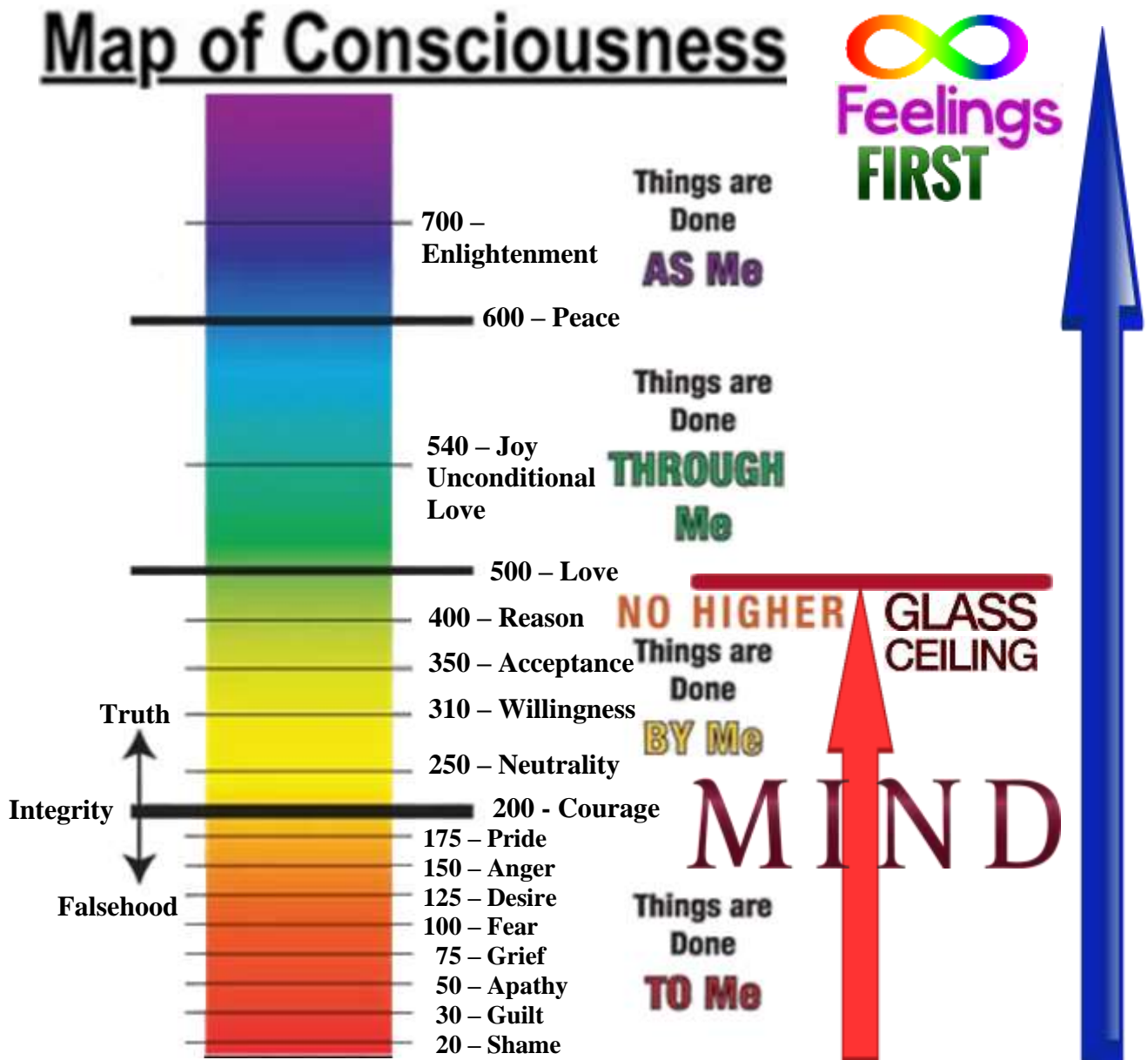
Totally self-reliant, not God reliant.

Fear dominates all motivation.

Suicide is possible and probable.

At these levels, seriously harming others for even trivial events appears to be justifiable.

Poverty, unemployment, illness, etc., this is living hell on Earth.



This outline of the Map of Consciousness spells out the fact that while we live Mind-Centric and ignore and suppress our Feelings we cannot pass 499 MoC. Our mind being in control, as we have all been indoctrinated to live, is a glass ceiling. Humanity cannot heal anything, cannot be spontaneous, has no intuitiveness, and is locked into living in the deep hell states. This is why people find themselves in abusive homes, domestic violence, housing stress, homelessness and gross difficulties of all kinds. This is why we are easily manipulated, embrace propaganda and are being controlled by a few.

Women are closer to their feelings and that is why the nursing profession hosts a lot of women who calibrate a little over 500. These women are the healers in hospitals.

By aspiring to live Feelings First we are each breaking the glass ceiling and opening our potentials to grow in truth and love not only to 1,000 MoC, but to infinity. This is our destiny.

As communities embrace living Feelings First and having their minds to follow in supporting what their feelings are guiding them with, then ALL of the social ills of society will begin to mitigate. Please, do you comprehend the importance of what is being shared throughout this document?

WE ARE ALL BEING PLAYED

DIVIDE & CONQUER: IF THEY KEEP US FIGHTING WITH EACH OTHER, WE WILL NEVER FIGHT THE TRUE ENEMY... THE ESTABLISHMENT!



DIVIDE AND CONQUER MECHANISMS:

Skin Colour / Tone Bigotry	Class & Social Structures
Borders & National Cultures	Militarism is all Wrong
Language Divides	Societal Customs & Practices
Financial Enslavement	Debasement of Education
Professional Snobbery	Sexual Preference Bigotry
Assumptions Err 98% of the time	Political Division
Mind-Centrism Stagnation	Religious Bigotry
Mind Control Addiction	Mind Untruth Addiction
Institutional Controls	Leadership Propaganda & Lies
Parental / Teacher / Religion / Employer / GovernmentSuppressions	
Potable Water Security Food Security Safe Shelter Security	
Universal suppression of all peoples by covert controllers	
Living Mind Centric is prohibiting spontaneity & freedom	
Living Feelings First is living in truth & freedom !	
Women Liberating	Childhood Suppression to end



22 July 2023

1 Rebellious Lanonandek Spirits

Paradise spirit personalities imprison the rebellious Lanonandeks, the evil ones, in CE 26 and CE 1993 ending their domination over humanity.

2 Mind Mansion Worlds Spirits

Celestial Spirits block the influence from controlling mind Mansion World spirits over Earth's humanity commencing on 22 March 2017.

3 Hidden Controllers on Earth

Law of Compensation quickening commences 22 May 2017. Hidden Controllers on Earth now having their finances impeded and their influence destabilised.

4 Puppet Leaders on Earth

Puppets of Earth's hidden controllers are to be 'embarrassed' into embracing the wishes and needs of their constituents and deliver humanitarian programs.

5 Earth's Humanity

PASAS FOUNDATION, on 22 July 2023, now to bring awareness worldwide of The New Way to all of Earth's humanity. Enter the Great U-Turn and ending of the Rebellion and Default.



PASAS

PSYCHIC BARRIERS to CHANGE!

To put it succinctly:

We have been driven, generation after generation, to embrace our minds to the point that we blindly worship our minds, due to the fact that high level spirit controllers considered we would fall to to their coercion.

Our minds are addicted to:

Control over others;

Control over our environment.

That males are now addicted to having females subservient to their control.

That our minds cannot differentiate Truth from Falsehood.

That our minds are addicted to untruth and that 'fake news' and propaganda will be believed by a gullible, subservient audience.

That consequently, the sheeple will march to war without questioning.

So, financial gain for the few hidden controllers is the trigger for never ending wars, if they cannot enslave nations through debt by other means!

We, here on Earth, live in a physical HELL!

Root Cause

Highly esteemed Lanonandek spirits from within our local universe of Nebadon were assigned as System Sovereigns of our local system to oversee Earth's humanity and their spiritual development. 200,000 years ago they, the Lucifers, became infatuated with their authority and turned against the regents of Nebadon, Mary and Jesus, as well as rejecting God. Through their Planetary Princes, also Lanonandek spirits, they had taken the humanities of 37 worlds within their local system into their Rebellion.

Through living through our minds, suppressing our feelings, we on Earth will continue to be at war with each other, illnesses of all descriptions will continue from our feelings suppression, famine and inequalities prevail, control of others is the core of all systems, we cannot determine truth from falsehood and life on Earth is a living hell. We have been continually seduced by mind Mansion World spirits and we live life in a stupor – nothing more than zombies doing the begging of the evil ones, the rebellious Lanonandek spirits.

Through living through our minds, suppressing our soul based feelings, we have been progressively going further and further away from our Heavenly Parents, now to the point that we cannot go any further. Through working cracks in the Universal Contract governing the Rebellion and Default, this control has been ended formally as of 31 January 2018.

Pathway Forward

To liberate one's real self, one's will, driven by one's soul, moves one to embrace Feeling Healing, so as to clear emotional injuries and errors. With the Divine Love, then one is also Soul Healing. We are to feel our feelings, identify what they are, accept and fully acknowledge that we're feeling them, express them fully, all whilst longing for the truth they are to show us.

God's Divine Love: Pray for it, ask for it, and receive it.

The Golden rule is: Never interfere with another's will.

Golden Rule: that one must always honour another's will as one honours one's own.

New Feelings Way: learning how to live true to ourselves by living true to our feelings.

We are to express our feelings, both good and bad, at all times, and to long for the truth of them.

By living true to ourselves true to our feelings, we are living true to God. It's that simple.

One Cause – One Pathway

simple is what LIFE is meant to be!

Amazingly, it has not been previously understood that should we heal ourselves of what we each have taken on of the Rebellion and Default via our Childhood Suppression being experienced throughout our childhood formative years, such healing being through Feeling Healing, then we would no longer need to experience physical discomfort, pain, disease or any illness.

Sickness comes about in its diverse forms to draw our attention to our emotional injuries and errors of belief. Once we fully heal ourselves then we no longer need to experience illness! Feeling Healing is the only pathway!

The extreme diversity in the forms of illness is of a direct reflection of the diversity of our personalities and the suppressive environments we each have experienced.

It is only upon completion of our Feeling Healing that such propensity for physical health arises.

However, now it can be understood why allopathic medicine, traditional medicine and all other health systems do not bring about a cure. That is because the underlying cause has not been previously recognised and consequently it is never addressed.

To engage in living Feelings First and then to embrace Feeling Healing is addressing our Childhood Suppression as well as our ongoing Repression that continues throughout all of our life. Further, by also embracing Divine Love we are also Soul Healing and thus fitting ourselves to become of Celestial Soul Condition which we can do while living in the physical on Earth.

Humanity, over many thousands of years, has progressively gone deeper and deeper into wrongness through living mind-centric. We have always taken the wrong option – our choices have always deepened our suppression of our truth and personality.

By embracing The New Way, living Feelings First, humanity will begin to resolve the social ills that prevail throughout all societies. Progressively the circumstances for world peace will arise.

Living Feelings First growth potential is

Our Feelings are our Supreme Guide! Truth is found through our feelings, we are to long for the truth about what our feelings draw our attention to. Our soul based feelings are always in truth. We are fully self-contained. This simple fact has been hidden from us for 200,000 years while our hidden controllers, the evil ones, kept us under their selfish controlling agenda.

Living through our feelings first with our minds to follow in assisting with what our feelings guide us to consider is a rewarding, freeing and vibrant life. Whereas we all have been retarded through living mind centric.



Living through our Feelings First, the New Way, and longing for truth of what they are to reveal, expressing what we feel, both good and bad, will enable us to progress through the Feeling Healing Mansion Worlds while living on Earth. With Divine Love we will be fit to enter the Celestial Heavens and then progress through all the Celestial Heavens of our local Universe of Nebadon and then onwards to Havana and Paradise, the home of our Heavenly Mother and Father.

Not only will we progress beyond 1,000 MoC when transitioning into the 1st of the Celestial Heavens, by the time we reach Paradise we will have progressed to what could only be described as infinity – well not quite – but we will be truly awesome in our evolution and development.

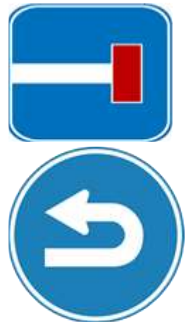
Living mind-centric limits growth to 499 MoC

We all live through our minds! We all suppress and ignore our feelings. This has been how we have been led to live by high level spirits who had ambitions of self-glorification to our detriment. These wayward spirits had allusions of expansionary empowerment and they needed Earth's humanity as their foot soldiers! Through their deceit, we would continue to live in spirit as we do on Earth without any prospect of progressing out of the spirit mind Mansion Worlds.

Should we continue with aspirations in the perfecting of our mind then we can progress from the 1st spirit Mansion World to the 2nd mind spirit Mansion World, then 4th and finally 6th mind spirit Mansion World to a dead end. In these higher worlds we may appear to be guru type personalities but we have gone further away from God – we have then perfected our evilness!

The mind can even stave off the time when the Law of Compensation is addressed.

A U-Turn is required and then one would commence embracing their feelings and progress through the Feeling Healing Mansion Worlds 3, 5 and 7. With Divine Love then on completion of the 7th spirit healing Mansion World process we transition to the 1st of the Celestial Heavens.



While we suppress and ignore our feelings we are living in hell and putting ourselves through untold misery, pain and suffering when we can achieve healing to the level that we are living as Celestials while in the physical on Earth!!!

Hi John

2 October 2023

I don't feel good in supporting anyone else work John, i have to say it! Brandon Bays healing is a mindfulness based journeying intervention, drawing on guided imagery, meditation techniques, using music and candles to still the mind. I don't feel the need for any of that to access my feelings, just to feel them as they arise and that takes me down to the next feeling and into the grief. The only tool I need is to call upon is Mother and Father's help to bring up the feelings within me, when I long to them, the help is there.

Sitting in stillness and allowing the emotions to pass through the body, rather than allowing their expression in that moment is still denying the feeling within that moment, it is quietening them down as they arise, when what needs to happen is to give them a voice, and at times it is a very loud voice, and can be very alarming to anyone else around, but we have to get used to being in this state of overwhelm with our feeling expression. I feel that Brandon Bays journeying is still steeped in mindfulness and not in Soulfulness as feeling healing is with God's divine love. I feel that my healing can only be done with God's intervention, that is all the help I need to become aware of my denied and suppressed childhood's feelings, anything else is still in rebellion to God as it is not using them to reveal to me my own personal rebellion towards them. I feel that if we are not using them to help us heal, then it is still all within the rebellion.

God is who we are coming home to after so many thousands of years of being away, of being in rebellion to them, and that rebellion has caused endless pain and destruction and illness. We are all living in the devastation caused by living a life without them, we are living in the ruins of rebellion and we see it as a natural and normal life, we see pain as being normal and what we have to go through in life, but all that we are living every day, is the devastation of living a life without and against God, love and anything good.

All that feels right to me is 'Feeling Healing with Gods Divine Love' I won't be supporting anything else. I could lose everything in my life but my feelings and God will always be all I need to heal.

Sam x

Only three people who have worked their way through Feeling Healing can guide us with our own Healing.



How to live The New Way – Divine Love Spirituality; and do your Spiritual Healing:

Want to live true to your feelings more than anything else.

Want to live true to yourself through your feelings.

Want to feel as powerless as you feel, and want to see how much of a controller you are.

Want to see how you're using your mind to block out, and so control, your feelings.

Honour and express all your feelings. Especially all the bad ones.

Don't do anything to deny them. Accept yourself being them.

Allow yourself to be them, so you can feel them fully.

Long with all your heart for the truth of all your feelings.

Ask God to help you uncover the truth of yourself through your feelings.

Want to see the truth of your childhood.

Want to give up being false, superficial and untrue. Want to stop being rebellious.

Want to stop being unloving. Want to see the truth of these things.

Long with all your heart for the Divine Love.

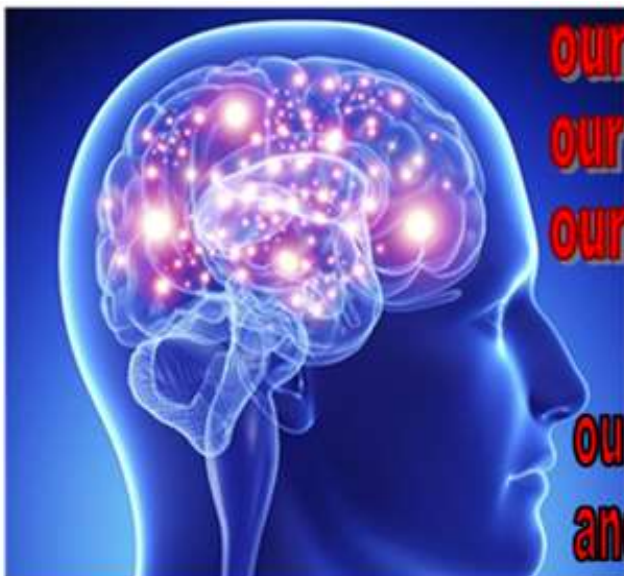
Long to your Heavenly Mother and Heavenly Father to love you;

And to fill your soul with Their Divine Love.

James Moncrief 30 September 2023

We are to embrace the new and put aside the old!

**This time, in the history of humanity, is
the most exciting time ever experienced.**



our MIND is a CONTROL ADDICT!
our MIND is addicted to UNTRUTH!
our MIND cannot discern TRUTH!

our MIND is within our SPIRIT BODY
and orchestrates our physical BRAIN.

ASSUMPTIONS are the product of our MIND!

HEALING ends
MIND-CONTROL!



our SOUL is our TRUTH!
our FEELINGS are our TRUTH!
FEELINGS FIRST, mind to follow!

all we need is WITHIN.
our MIND suppresses FEELINGS.

The New Way

Living True to Your Feelings

We live denying many of our feelings, which is not good or healthy for us.

Early in our childhood our parents, families and society in many ways tell us that expressing certain feelings is not right, it's unacceptable, forcing us to block them out.

“Stop crying, you're too old to cry”. “If you carry on behaving badly, you'll be punished”. “Smile, stop looking so miserable, what have you got to be unhappy about!”

We are told many of our childhood bad feelings (and often good ones too) are not welcome, which is saying, you are not welcome as you are, you must change yourself and be as we say you are to be. It's not loving to be treated that way.

And by forcing ourselves to change causes us to suppress and then keep repressed many bad feelings. And all those repressed bad feelings fester away inside us making us sick and unhealthy.

To be made to stop expressing any feeling means we are being stopped from expressing the whole of yourself. And that is very damaging.

Living by not expressing ALL our feelings fully means we can't enjoy fulfilling relationships, it causes problems, unhappiness and all illness.

So all our problems and difficulties stem from the fact that during our childhood we were stopped from expressing all of ourselves, by not being allowed to express all of our feelings. And this is how the whole world lives. Some people, families and societies being more or less feeling-expressive than others.

And The New Way seeks to end any repression of feelings. It's to understand that we should live fully expressing all we feel and not with our mind heavily in control of ourselves limiting our self- and feeling-expression.

The Old Way is living the Mind way of feeling repression. An unloving way of being.

The New Way is living the **True Way** of feeling expression. A loving way of being.



Avonal Revelation

- We are to live Feelings First.
- We've been made to use our mind to live against many of our feelings.
- Our mind control commences at conception and is developed through our childhood.
- All the bad feelings we didn't express as we were growing up are still repressed inside us.
- And all such hidden, buried and unwanted feelings have to come out.
- And whilst they remain repressed within us, they will continue to make us feel bad and unloved.
- We get sick, depressed, suffer, have bad things happen to us because of our repressed childhood feelings.
- Humanity was brought into this state of living against itself by higher rebellious spirits.
- These Evil Ones caused the Rebellion and Default.
- We are made to rebel by default – as we have no idea we're doing it through our parenting in wrongness.
- We are all parented unlovingly – against ourselves, against our will.
- Some parenting in the wrongness is done with more love, yet it's all still wrong.
- To heal this unloving state within ourselves we have to do our Healing.
- Our Healing is our Feeling-Healing or Soul-Healing with the Divine Love.
- We can long to God for Their Divine Love, and this will help us with our Healing.
- God is our Heavenly Mother and Father, the Feminine Aspects of God having been kept hidden from us by the Evil Spirits.
- All humanity's religions and spiritual systems are designed to keep the wrongness going, to keep us away from God.
- Only by living Feelings First Spirituality, The New Way, can you become right, and truly find God.
- Long for the Divine Love.
- Long for the Truth of your Feelings.
- Accepting all you feel is accepting all of yourself, it's your greatest act of self-love.
- And wanting to know the truth of your feelings, is your next greatest act of self-love.
- Love yourself through your feeling-acceptance, and the Truth will set you Free!

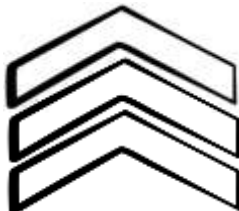
31 May 1914 and ongoing

The CHOICE is OURS to MAKE:

Celestial Truth:

- Truly all-loving;
- Living true to oneself;
- Mind supporting Feelings;
- Living with the Divine Love;

Fully Healed of the Rebellion and Default.



THE FEELING WAY

Feeling – Ascendance
Unlimited progression

- Living true to your untruth;
- Honouring all your bad feelings;
- Expressing feelings to uncover their truth;
- Healing the Rebellion and Default within yourself;
- Feeling unloved; being unloving;
- Feeling as bad as you can feel;
- Feeling like you are no one special;
- Longing for the Divine Love.



THE MIND WAY

Mind – Transcendence
Limited progression

- Enlightenment, Nirvana, feeling all-loving;
- All false, mind-contrived. Anti-truth, anti-love;
- Still evolving the Rebellion and Default within yourself;
- Feeling and believing you are the Superior One;
- Living with your mind in control of your feelings;
- Living rejecting all your bad feelings;
- Living with your mind contriving you feel loved;
- Rejecting the Divine Love.

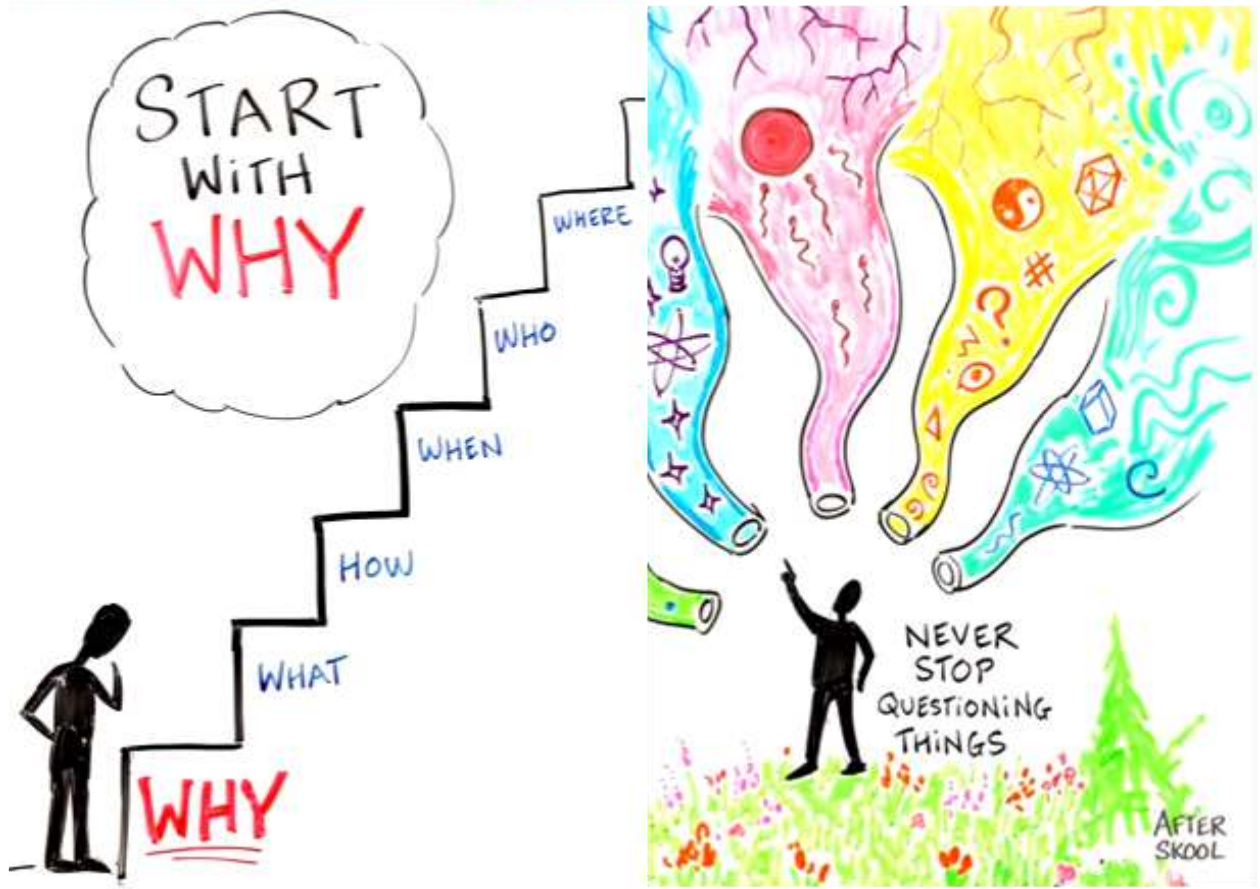


All religions, New Age, agnostic, atheists, no spiritual interest, Living the Rebellion and Default.

**Hell:
Exploiting the Rebellion and Default.**

The Feelings are the doer; the Mind the teller. So we are to go with our feelings, which we can't be told to do with our mind. So the longing for the Divine Love, doing our Healing by expressing our feelings and longing for their truth, are all feelings and doing it with longing. Whereas the mind just wants to tell us what to do and how to be, no feelings in it, all how our parents have treated us.

WE ARE TRUTH SEEKERS



feelings

New way

The NEW

The NEW

It's all about
Experiences
&
FEELINGS



BE FEELINGS
EXPRESSIVE!

WHOLE DIFFERENT Way of Life.

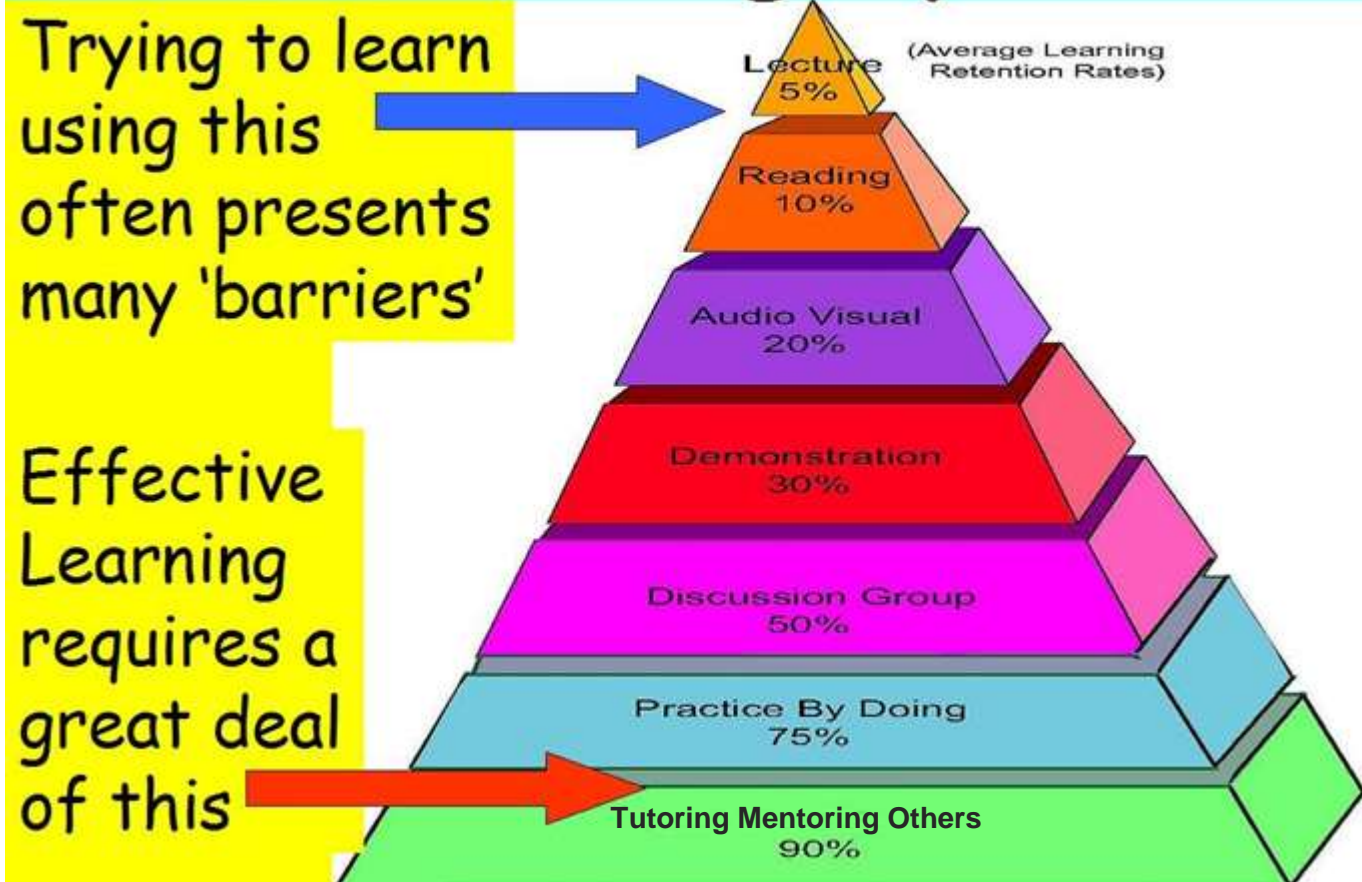


mind



feelings

The Learning Pyramid



100% retention is **Natural Self Expression**

Negative Spirit Influence blocked
22 March 2017
Law of Compensation quickening
22 May 2017



Rebellion and Default officially ended
31 January 2018
Now ready for Mobilisation
22 July 2023

Firstly, consider discovering the truth of your emotional pain through Feeling Healing. Secondly, consider longing for our Heavenly Parents' Love as you progress with your healing. Primary and most important readings are the writings of James Moncrief. Then consider the Padgett Messages, and then The Urantia Book.

<http://www.pascashealth.com/index.php/library.html>

Library Download – Pascas Papers

All papers may be freely shared. The fortnightly mailouts are free to all, to be added into the mailout list, kindly provide your email address. info@pascashealth.com

PASCAS UNIVERSITY

HIGHER EDUCATION SUBJECT GROUPINGS:



**ANIMALS AND
LAND**



**ARCHITECTURE,
BUILDING AND
CONSTRUCTION**



**ARTS,
HUMANITIES
AND LANGUAGES**



**CREATIVE ARTS,
DESIGN AND
MEDIA**



**ECONOMICS,
COMMERCE,
BUSINESS AND
MANAGEMENT**



**EDUCATION AND
TEACHING**



ENGINEERING



**HEALTH
SCIENCES
(ACADEMIC)**



**HEALTH
SCIENCES
(PROFESSIONAL)**



**HOSPITALITY,
TOURISM AND
EVENT
MANAGEMENT**



**INFORMATION
TECHNOLOGY
AND COMPUTER
SCIENCE**



**INTERNATIONAL
RELATIONS AND
DEVELOPMENT
STUDIES**



**LAW AND
CRIMINOLOGY**



**MARINE,
ENVIRONMENT
AND RENEWABLE
ENERGY**



MEDICINE



**MULTIMEDIA
MOVIES AND
MUSIC**



**NURSING,
MIDWIFERY AND
PARAMEDICINE**



PSYCHOLOGY



SCIENCE



**SOCIAL WORK
AND
COUNSELLING**



**SPORTS AND
EXERCISE
SCIENCE**

PASCAS UNIVERSITY

HIGHER EDUCATION SUBJECT GROUPINGS:

SPIRITUALITY



Spiritual University

Spiritual Education: Living true to one's feelings, expressing them, longing for their truth.

The New Way – Divine Love Spirituality / Religion of Feelings

Psychology – Spiritual Healing – Feeling-Healing / Soul-Healing

Humanity's Journey

Sanctuary Living / Aftertimes / Subsistence / Communal living / off grid/alternative

Health care, Family care, Midwifery, Nursing, Orphanage, Schooling, Old Age,

Emerging communities and Emergency support paid / volunteer work

Occupations to be achieved:

Divine Love Spirituality Teacher

Spiritual Healer (Feeling-Healing / Soul-Healing) / Counsellor / Guide / advisor / support

Sanctuary living and care

Counselling

Teaching

Nursing

Midwifery

Support for existing:

Orphanages, Midwifery, Nursing, Aged Care, Hospitals, Schools, Counselling, Abused Victims, Dental, Eye, Water, Food, Nutrition, Housing, Village / Family support, Psychology – Feelings First

TRUTH IS FREEDOM AND LOVE

FREEDOM IS TRUTH AND LOVE

LOVE IS FREEDOM AND TRUTH

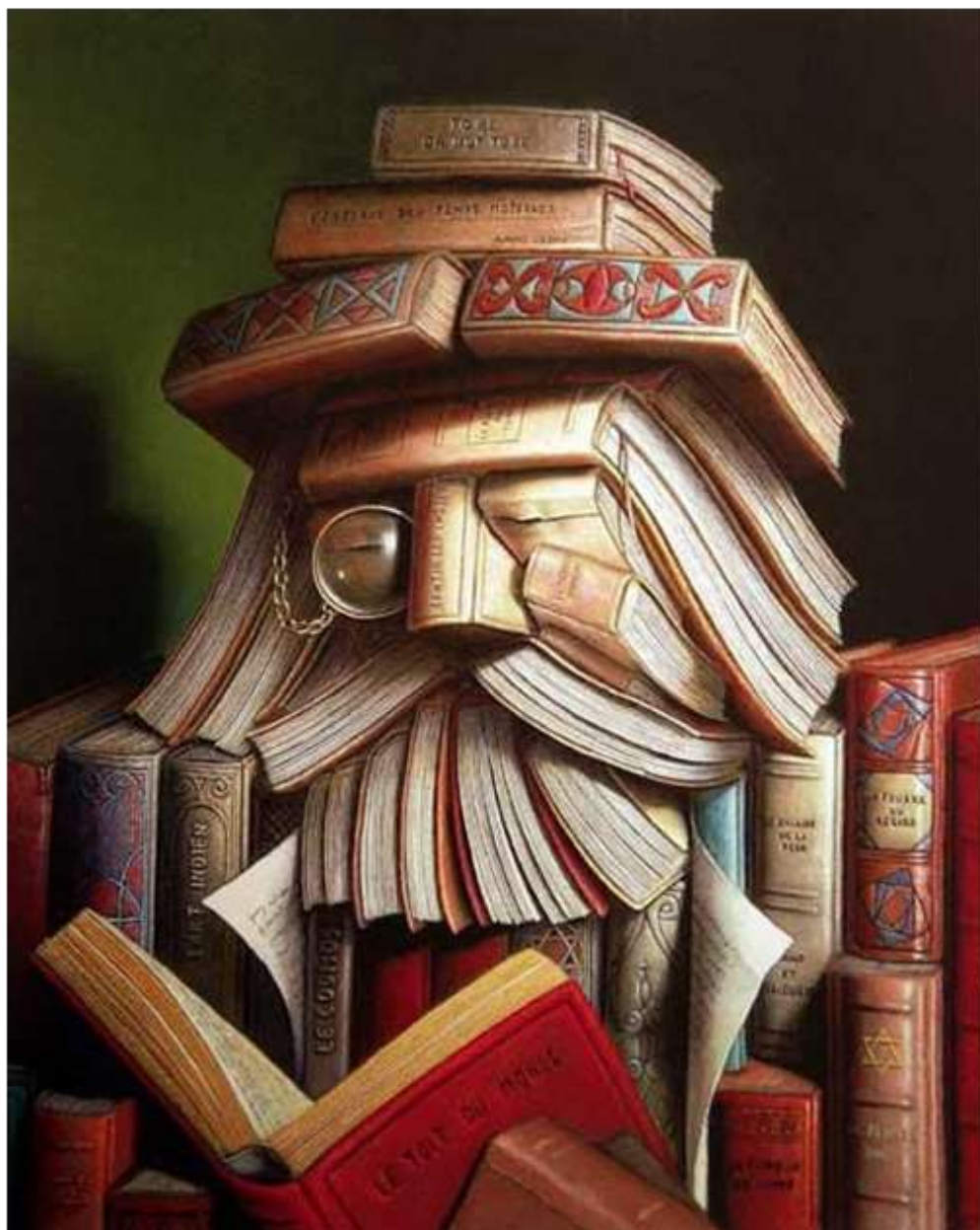
Children are now to embrace and express their feelings in all that they do and experience. It is our feelings that are our guiding light of love and truth. Truth is love.



Why?

May we ask why we have not understood this before? The Universal Contract governing the Rebellion and Default had to work its course. Cracks in it are now being worked to end the Rebellion and Default.

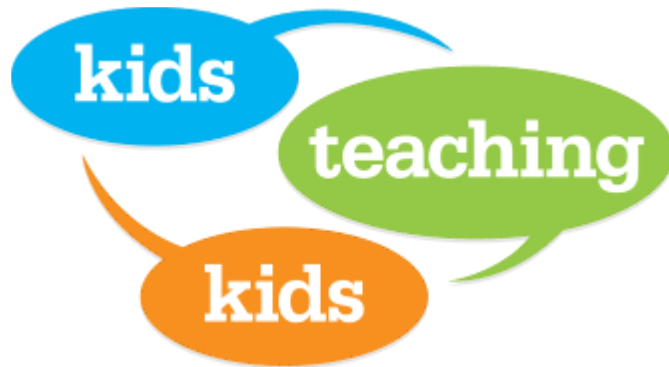
Education is to reveal itself through our feelings. Our soul based feelings are always in truth. And truth is love! We are fully self-contained. Our feelings are to lead our mind in all that we do, not live how we have been previously taught. It is that simple!



Within, I know who I am and what my future journey beholds! My feelings are to be my guide being supported by my mind - not the other way around as it has been!



Tutoring



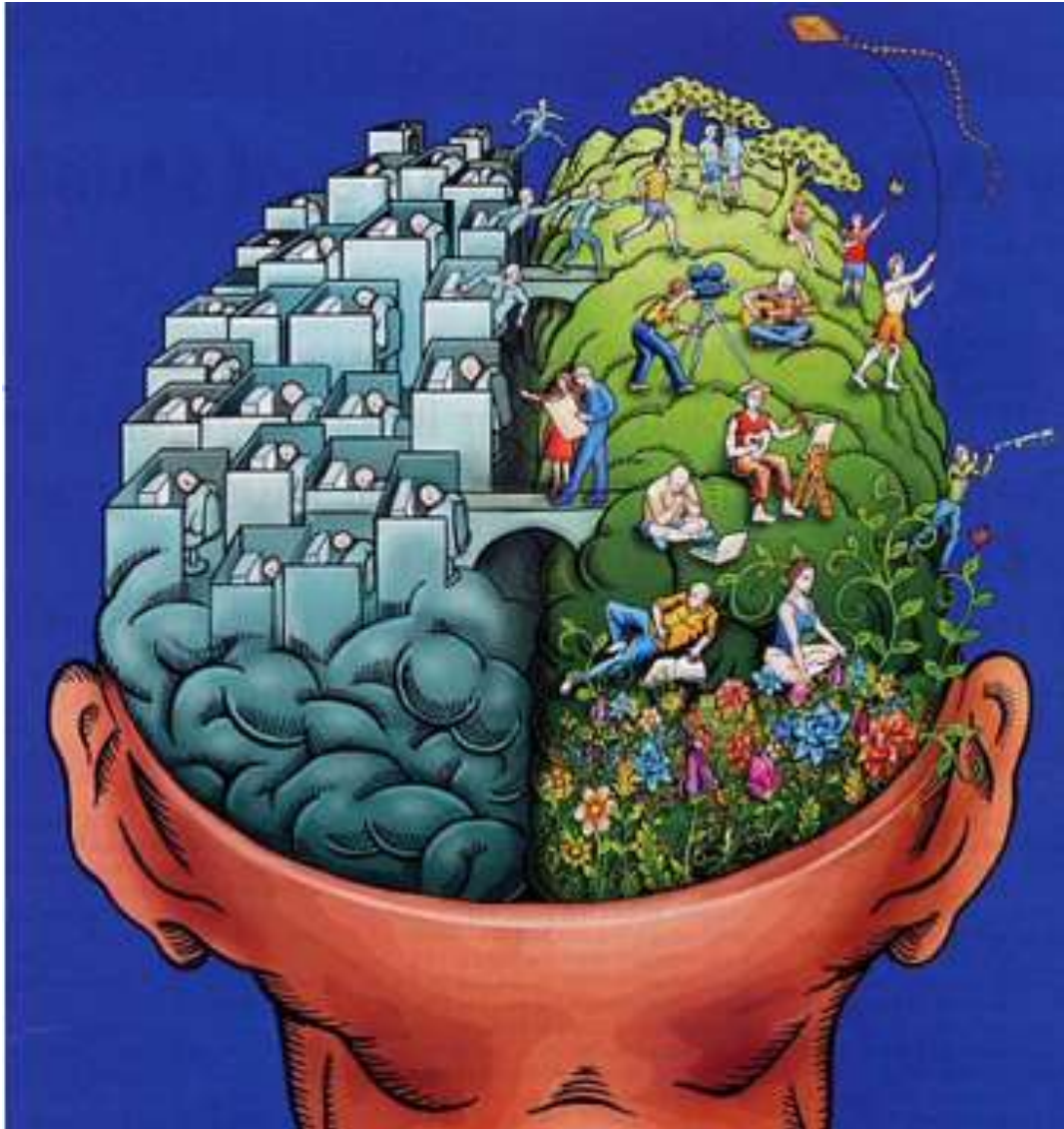
Natural Self Expression!



OUR PERSONALITY

**Our Mind
Side**

**Our Feelings
Side**



www.pascashealth.com

Library Download



Kindly go to www.pascashealth.com , then to Library Download, scroll a long way down to Corporate Alliances, and click on to open:

 [Pascas University Social Worker Inaugural PfD.pdf](#)

 [Pascas Care Educators Bridging to Feeling Healing.pdf](#)

This being the primary introduction Pascas Paper for educators and social workers.

Then to www.pascashealth.com , then to Library Download, scroll down to Medical Education, and click on to download and open:

 [Feelings Experience By South African Students.mp4](#)

For introduction into schools, we are able to follow the pathway of the Journey process, however, there are significant understandings that greatly distinguishes Feeling Healing from what was introduced around the world some 20 years ago.

The platform for schools are these documents also being in the Medical Education section:

 [Pascas Care Living Feelings First - Adults.pdf](#)

 [Pascas Care Living Feelings First - Children - Annexures.pdf](#)

 [Pascas Care Living Feelings First - Children - Discussions.pdf](#)

 [Pascas Care Living Feelings First - Children - Graphics.pdf](#)

 [Pascas Care Living Feelings First - Children.pdf](#)

 [Pascas Care Living Feelings First - Drilling Deeper - Structures.pdf](#)

 [Pascas Care Living Feelings First - Drilling Deeper.pdf](#)

 [Pascas Care Living Feelings First - Reference Centre.pdf](#)

By engaging in the syllabus introduced in [Pascas University Social Worker Inaugural PfD.pdf](#) it is anticipated that a degree will be achievable.

By utilising the Pascas Care Living Feelings First set of eight documents, then introduction through schools engaging with a single period per week great benefit can be provided to each student.

Thus, these sets of documents are highly constructive in assisting all members of any and every family.

Pascas Foundation (Aust) Ltd

The Pathway is long, straight and narrow!



perceived level of truth MoC 935 – relative truth potential MoC 1,480