

National Property Growth Grid Charts

**LET US
GUIDE YOU
THROUGH
THE MAZE**



PROPERTY LOCATION MAP



Distance to Public Transport
less than 800 metres

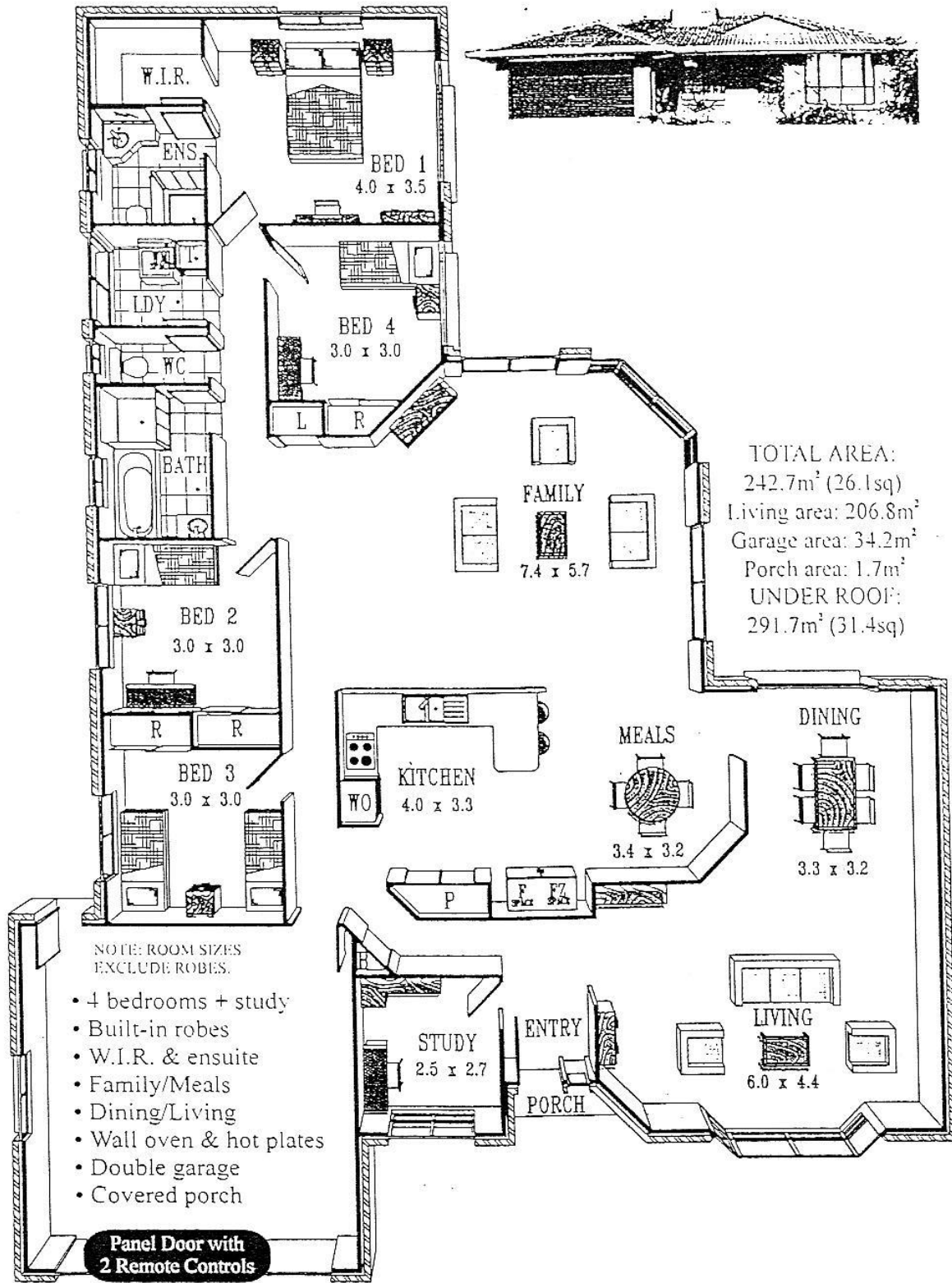
Distance to Shopping Centre
less than 800 metres

Commercial & Industrial
Developments

AU\$5 Billion within 6k radius

FACTORS for Consideration

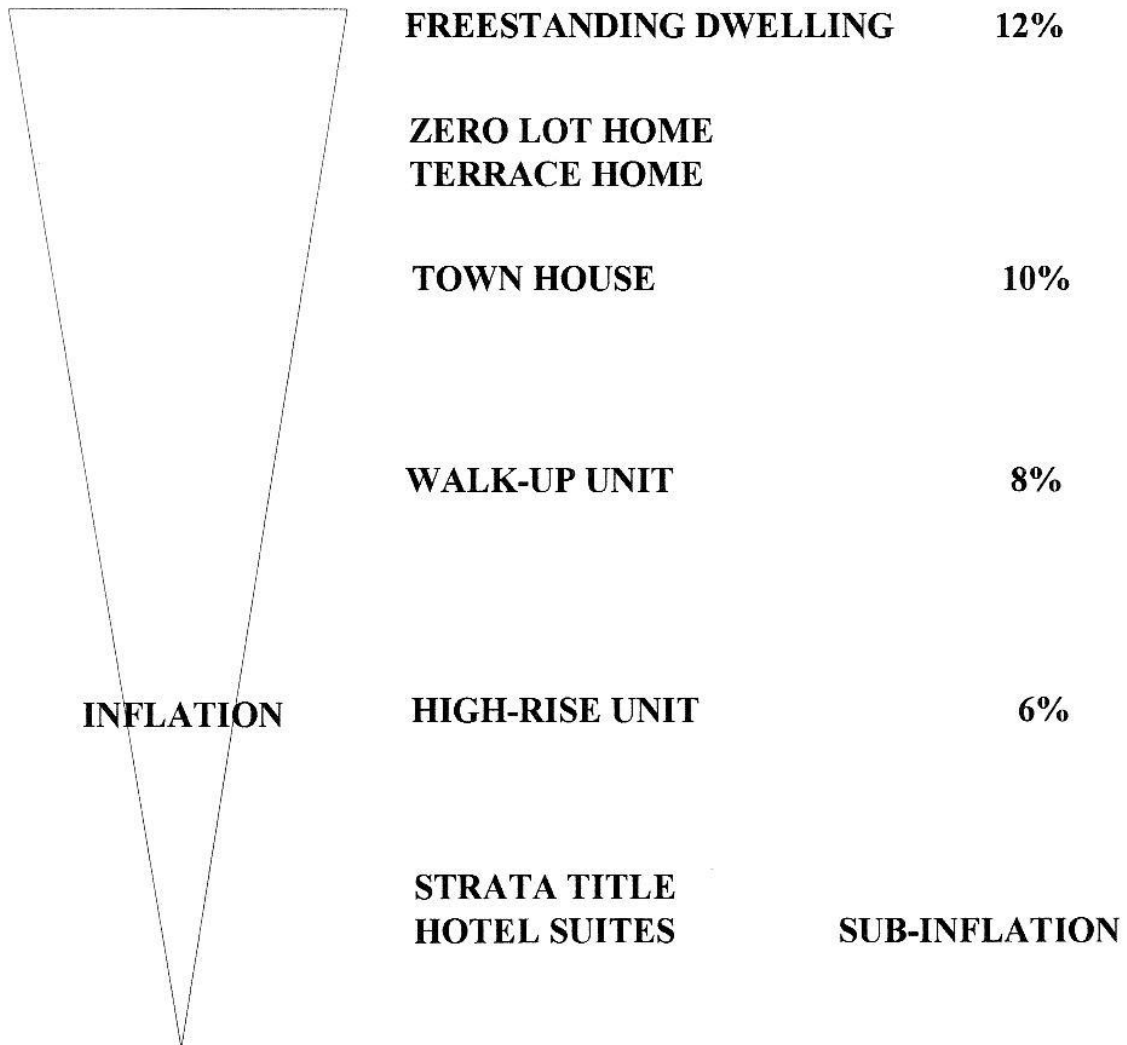
1. **Position**
2. **Employment**
3. **Population Trend**
4. **Developments**
5. **Valuation Trend**
6. **Transport**
7. **Site & Zoning**
8. **Rentals & Amenities**
9. **Occupancy**
10. **Timing**



CAPITAL GROWTH OPTIONS

The HIGHER the LAND CONTENT, the HIGHER the CAPITAL GROWTH POTENTIAL.

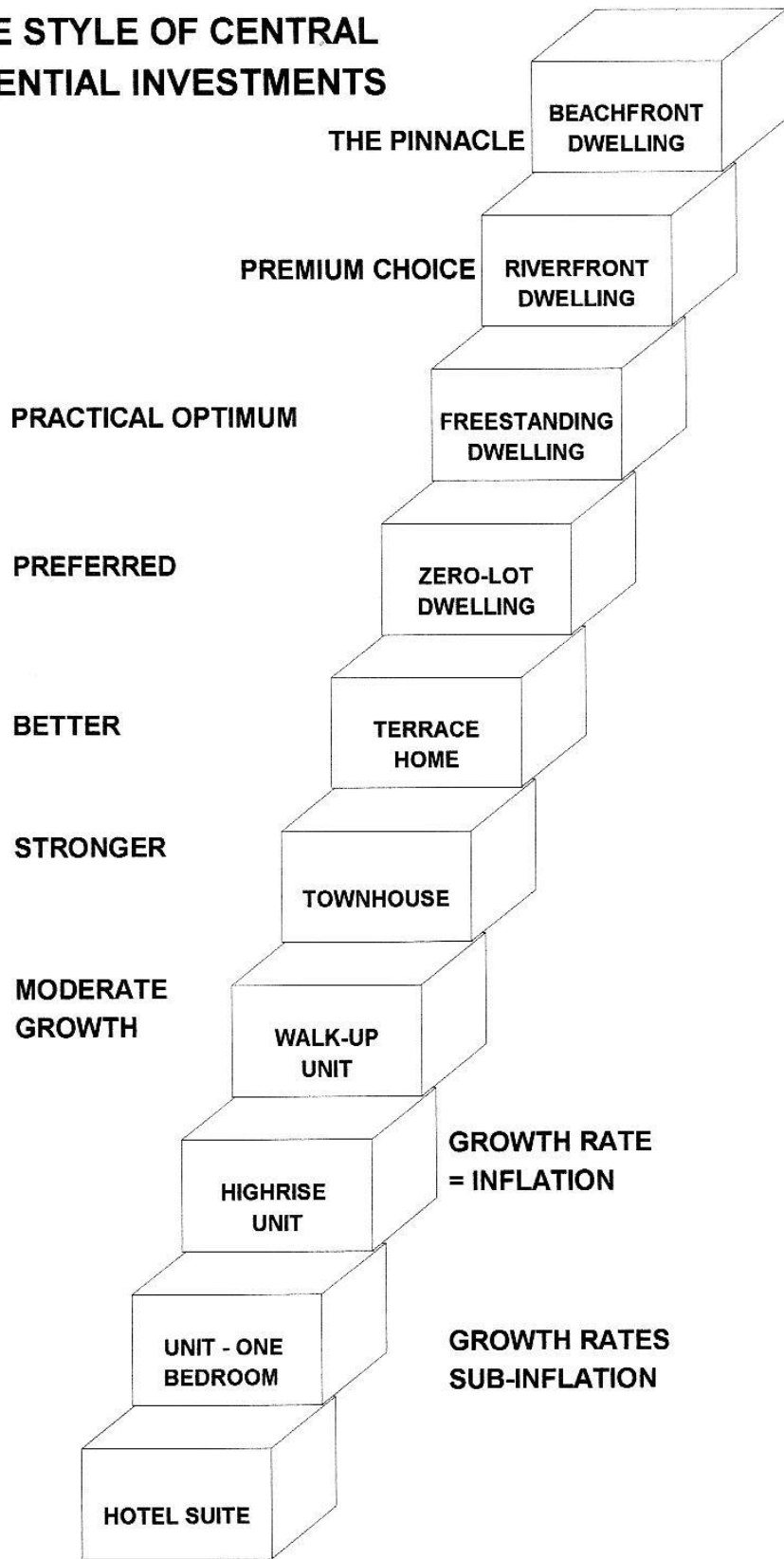
POSSIBLE OUTCOME in PREMIUM SECTOR



CAPITAL GROWTH OF VACANT LAND EXCEEDS THAT OF FREESTANDING DWELLINGS, in the same premium precinct, by 3% per annum, HOWEVER, VACANT LAND DOES NOT DERIVE ANY RENTAL INCOME nor any INCOME TAX BENEFITS.

Land content drives Capital Growth - the building structure depreciates.

THE STAIRWAY OF CAPITAL GROWTH IN THE STYLE OF CENTRAL RESIDENTIAL INVESTMENTS

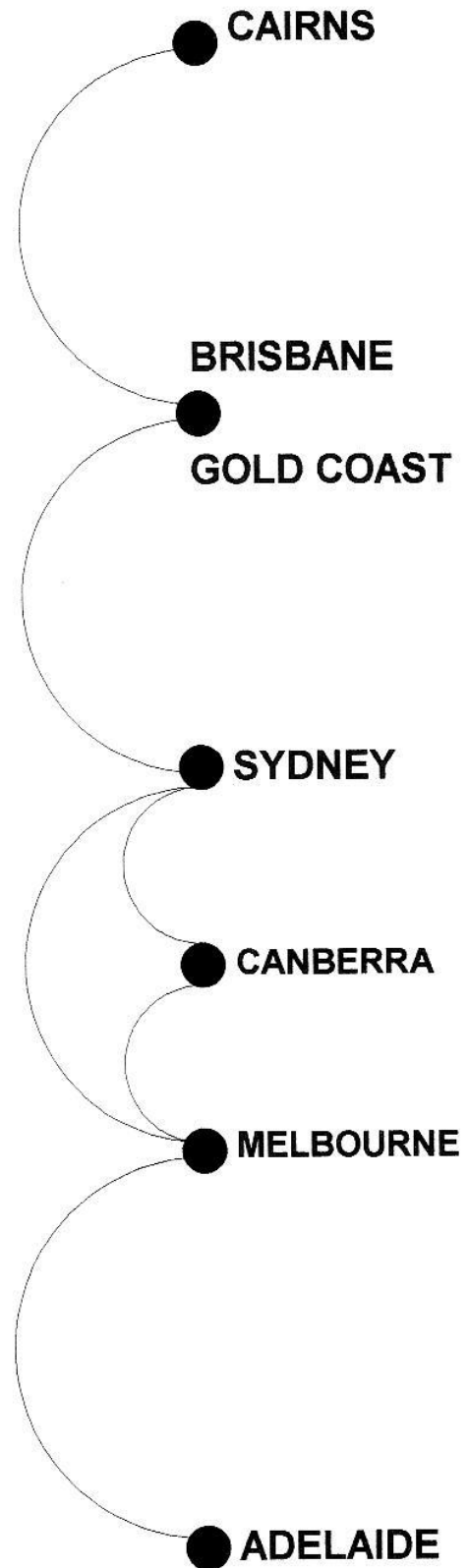


THE NATIONAL CAPITAL GROWTH GRID

THE CENTRE CORE OF THE CITY WITH THE STRONGEST EMPLOYMENT OPPORTUNITY OFFERS THE LOCATION FOR THE HIGHEST CAPITAL GROWTH IN RESIDENTIAL DWELLING INVESTMENTS

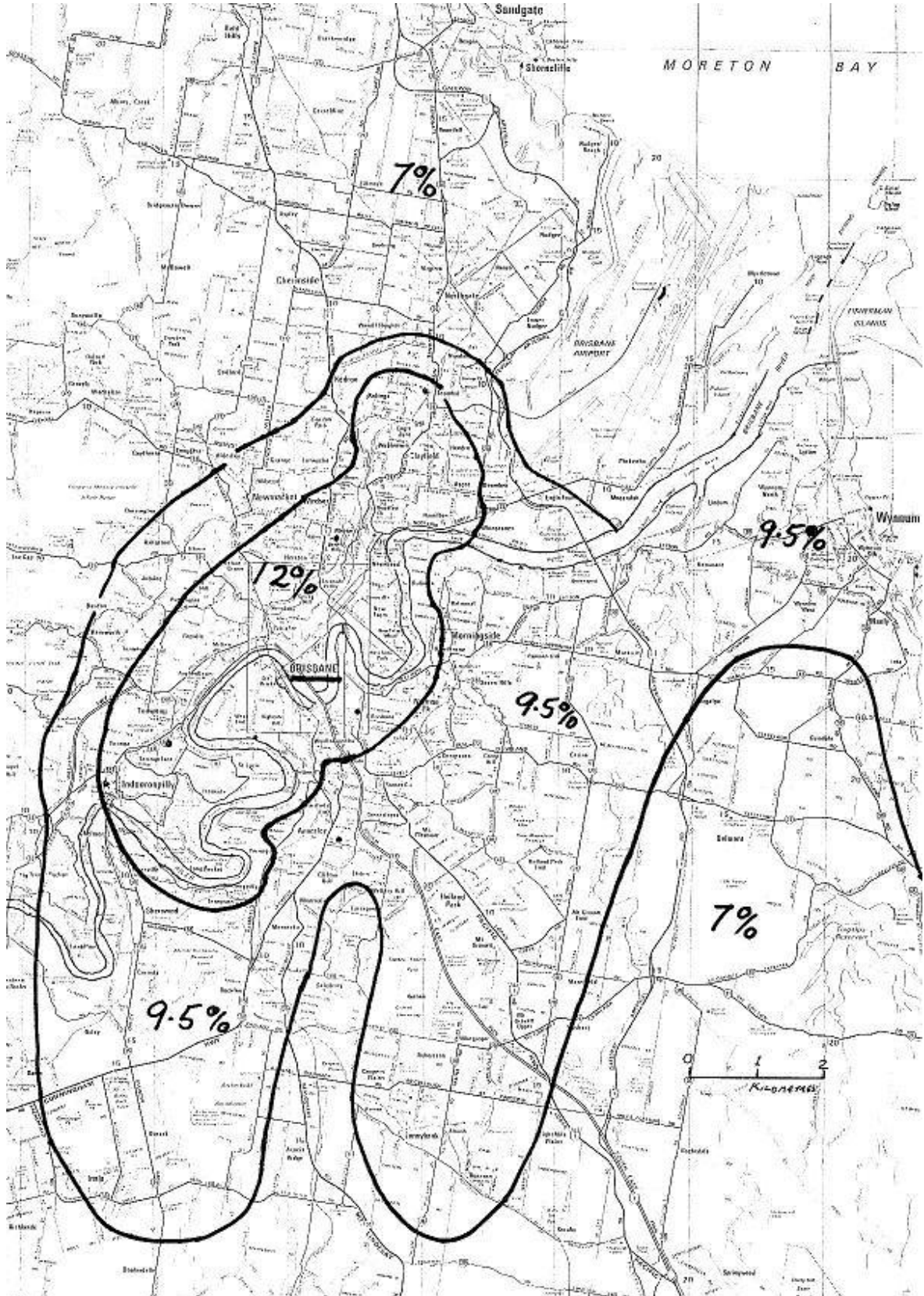
AS YOU GO INLAND THE CAPITAL GROWTH RATE DROPS PROGRESSIVELY AS YOU MOVE FURTHER AWAY FROM YOUR NEAREST COASTAL CITY WITH SUCH CITY BEING THE BASIS DETERMINING GROWTH

PEOPLE WANT TO LIVE WITHIN 6 KILOMETRES OF THEIR JOB!



BRISBANE CITY

Potential long term annual capital growth is focused upon freestanding homes, maps show relativity to adjoining areas, value growth diminishing as you move further away from employment opportunities. People prefer to live within 6 kilometres of their place of employment.



GOLD COAST

the GOLD COAST REGION



TOWNS, SUBURBS AND LOCALITIES

Andrews	L4	Elanora	L5	Piggabean	M5
Anglers Paradise	C3	Ennis	O3	Rarely Creek	K3
Aspley	F3	Greaves	O1	Rabien	J4
Austinsville	M1	Glendon	G1	Runway Bay	C4
Banorra	G3	Hidlersvale	D3	Sanctuary Cove	A2
Bayside Waters	C3	Hollywell	D3	Santa Barbara	A2
Bilinga	M7	Ingliside	M2	Southport	F4
Berong	L2	Kerrolala	J3	Sorrento	G4
Boykambal	B2	Kira	N8	Stapleton	K4
Broadbeach	H5	Lalorai	O4	Sunrise Paradise	F4
Bundall	G4	Main Beach	E5	Tallai	J1
Burleigh Heads	K5	Martin Waters	M6	Tallebudgera Valley	N3
Burleigh Waters	K5	Merrimac Beach	H5	Tallebudgera	M5
Canara	G3	Merrimac Waters	H4	The Spit	D5
Clear Island Waters	I13	Morvenac	I13	Tweed Heads	N9
Coolangatta	N8	Muldenara	E2	Tugun	M7
Coombah	B3	Mudgeeraba	J2	Tugun Heights	M6
Coomera	A1	Nerang	P2	Upper Mudgeeraba	K1
Cummins	L7	Queensland	B1	West Burleigh	L5
Cummins Valley	M5	Palm Beach	L6	Woongery	G1
		Paradise Point	B3		

Town facilities are selected for map inclusion and reference. For more detailed listings contact Town Information Centres.

GUIDE TO TOURIST FACILITIES

1 Air Museum	L5	14 Laxenburg	D2
2 Boomerang Farm	K1	15 Magic Mountain	J5
3 Botanic Gardens	E3	16 Burleigh Head National Park	K5
4 Casinos	G5	17 Paceway & Greyhound Track	M6, F3
5 Coolangatta Airport	N7	18 Riding Ranch	N3
6 Currumbin Bird Sanctuary	L5	19 Sea Shell Museum	M6
7 Gantlak	N4	20 Sea World	E5
8 Dreamworld	A1	21 Showground	E3
9 Fauna Centre	K5	22 Drive In	D3, N8
10 Casuarina Park & Gardens	G4	23 Land of Legends	M7
11 Gold Coast Turf Club	F4	24 Tigmouth & Helicopter Joy Rides	G3
12 Gold Coast Wet Museum	X1	25 West 'n' Wild Waterpark	C1
13 Koola Town	A1		

For more detail see "Sunrise Tourist Map Gold Coast and Hinterland"



PROVIDED/PRINTED IN AUSTRALIA

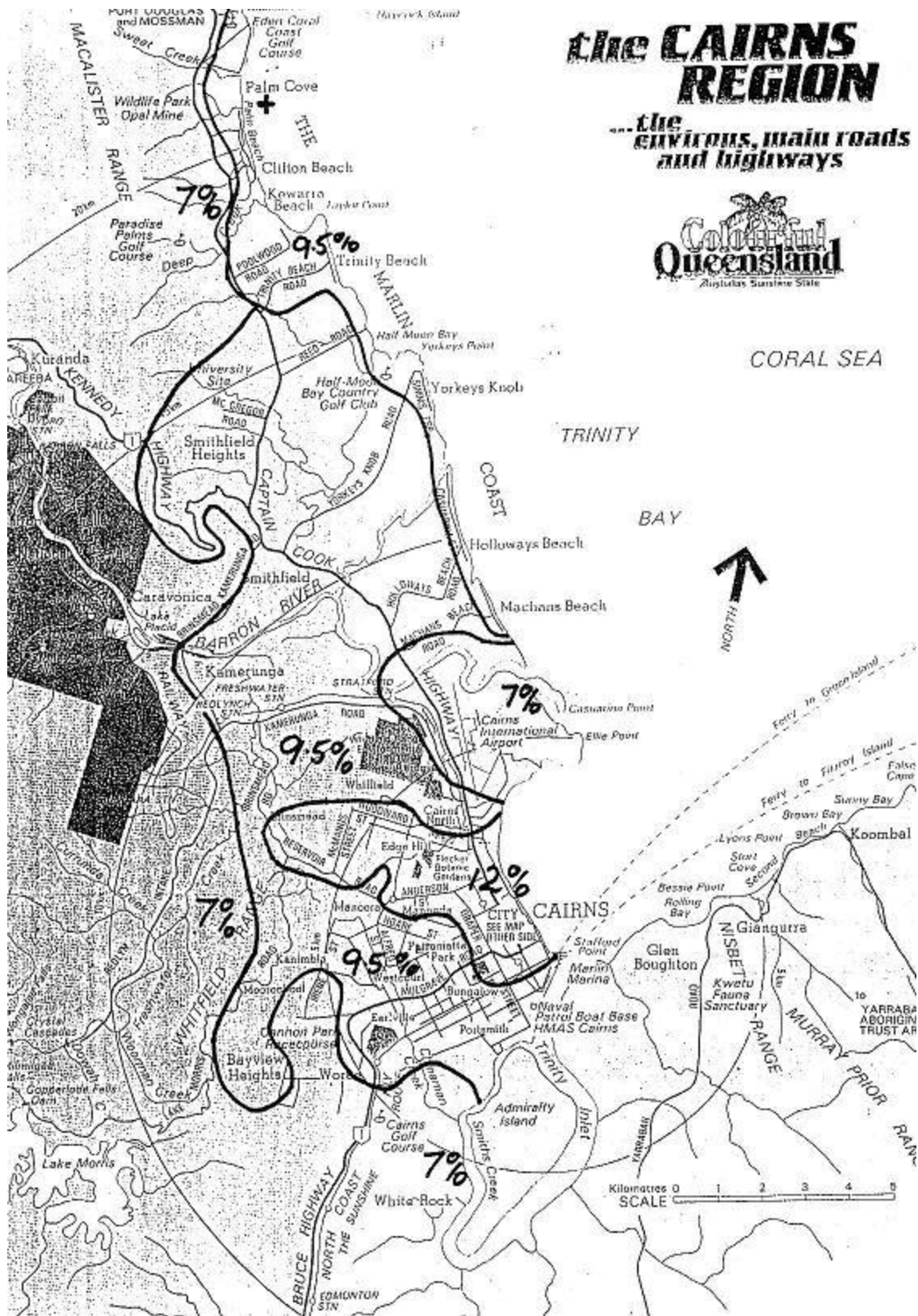
SUNSHINE COAST



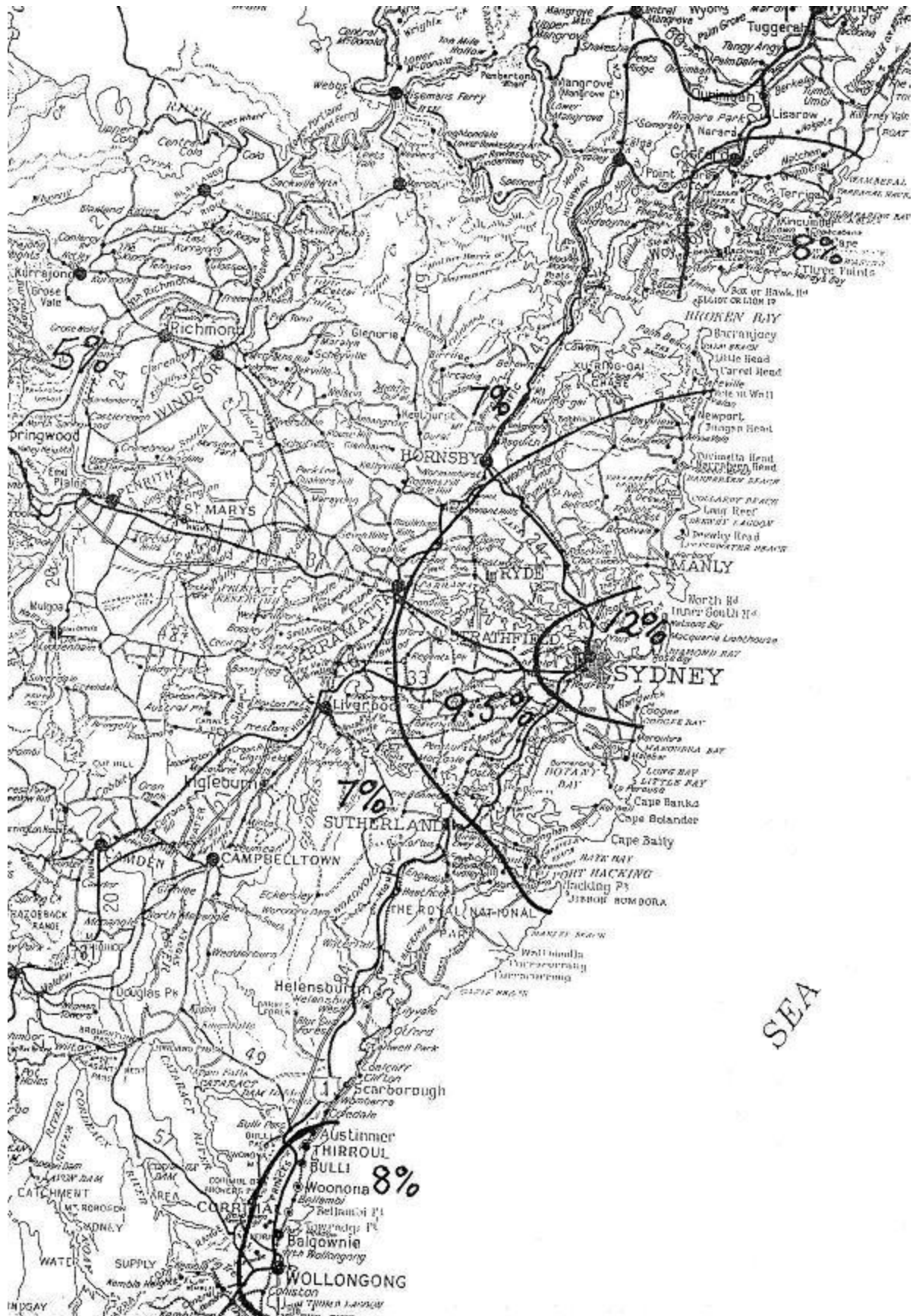
CAIRNS REGION

the CAIRNS REGION

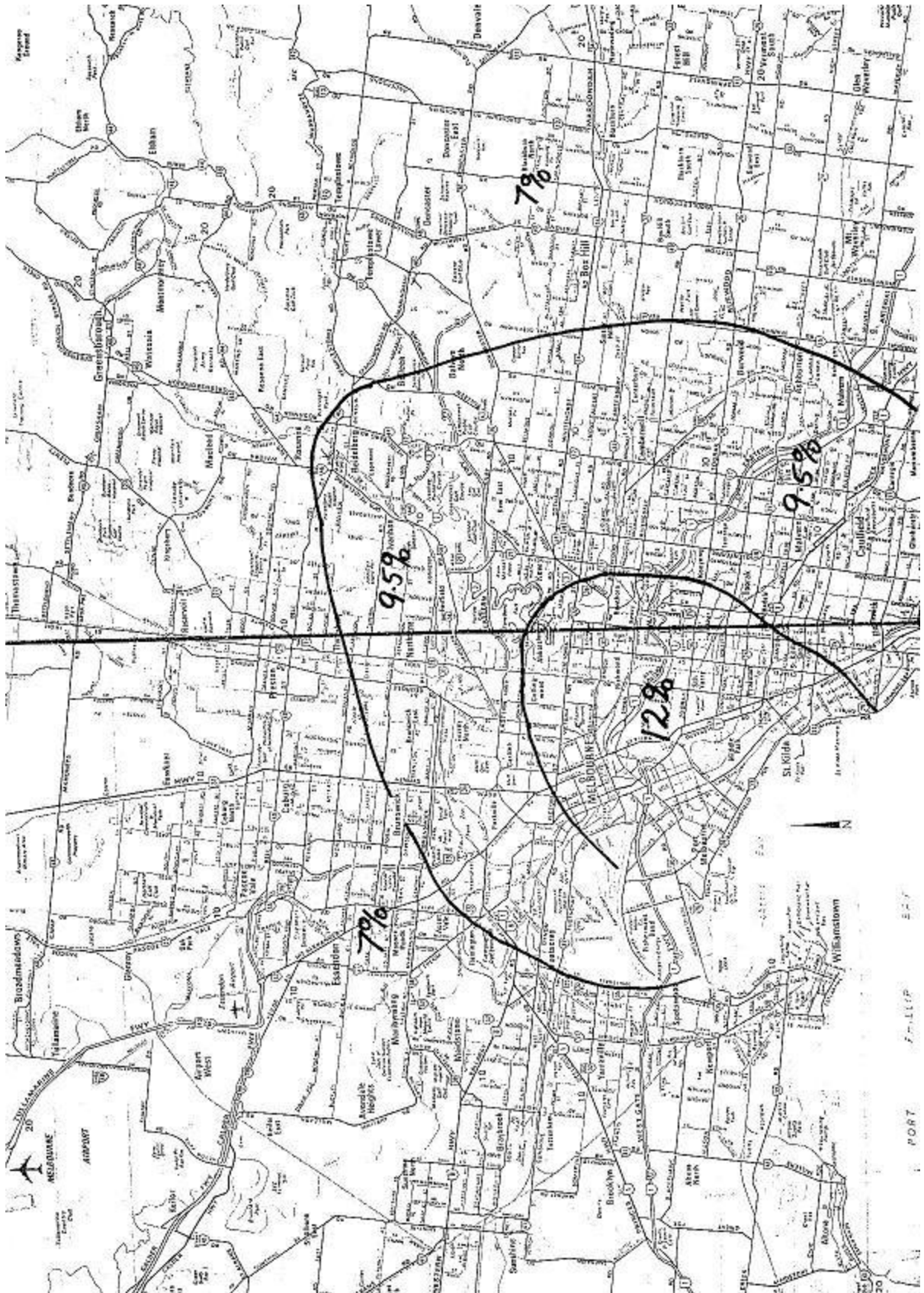
the *environs*, main roads and highways



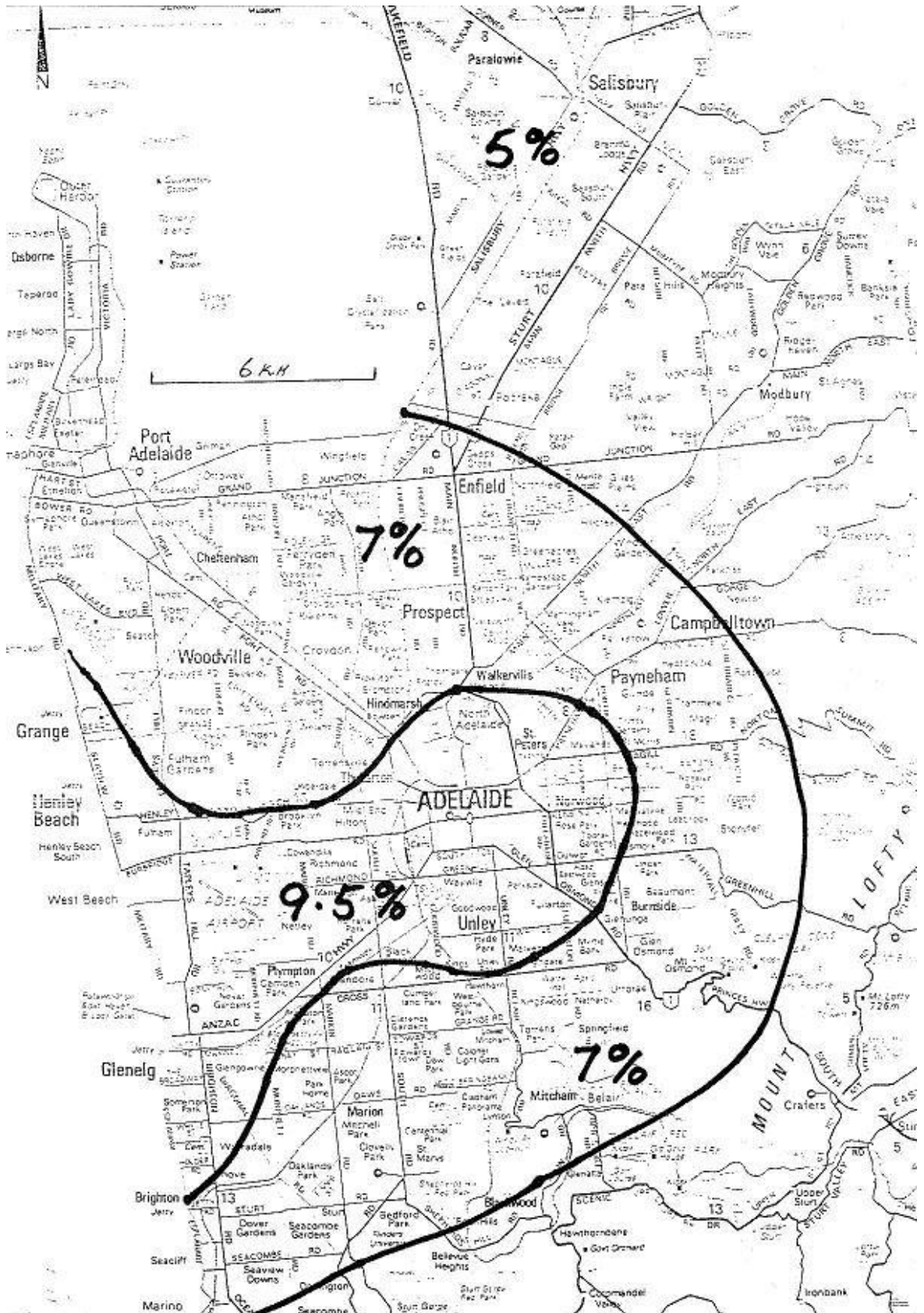
SYDNEY REGION



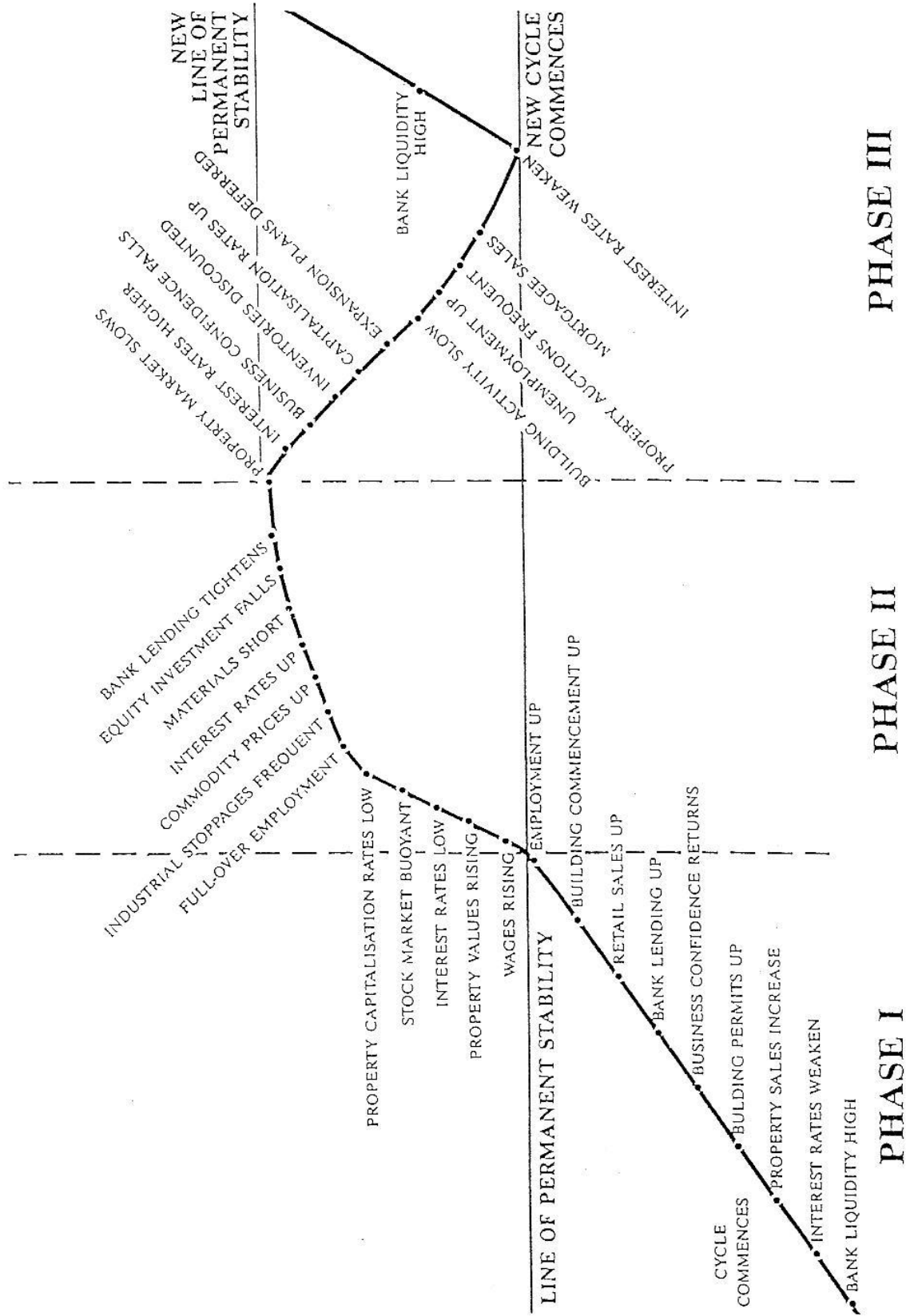
MELBOURNE



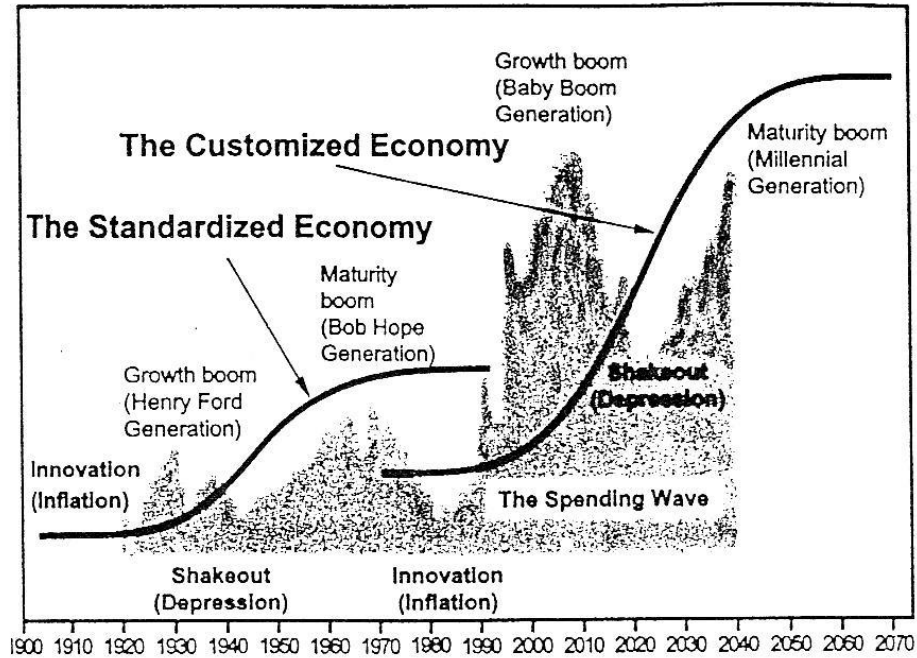
ADELAIDE



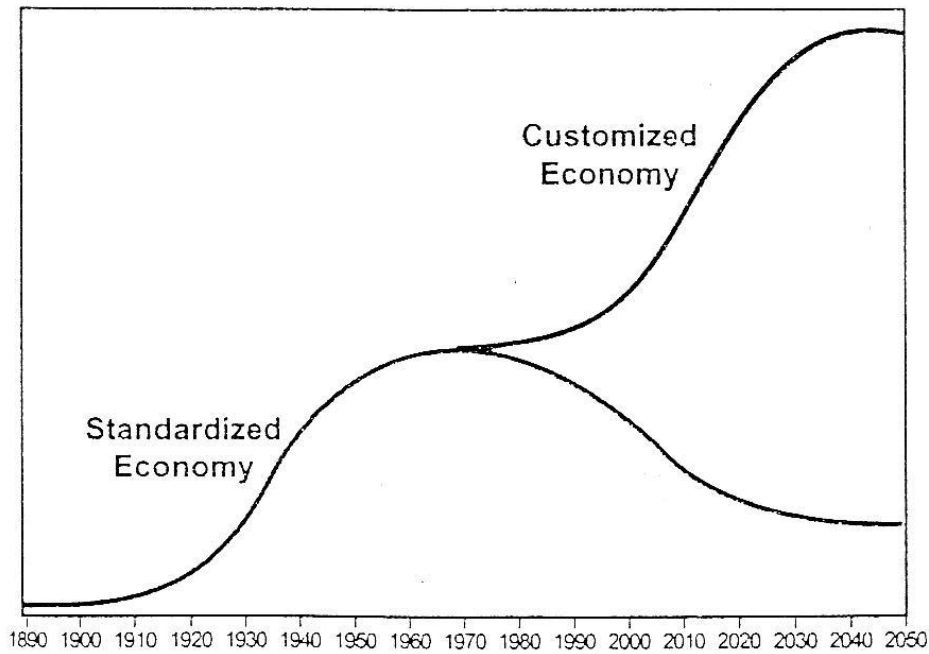
THE REAL ESTATE VALUE CYCLE



The Customized Economy Replacing the Standardized Economy



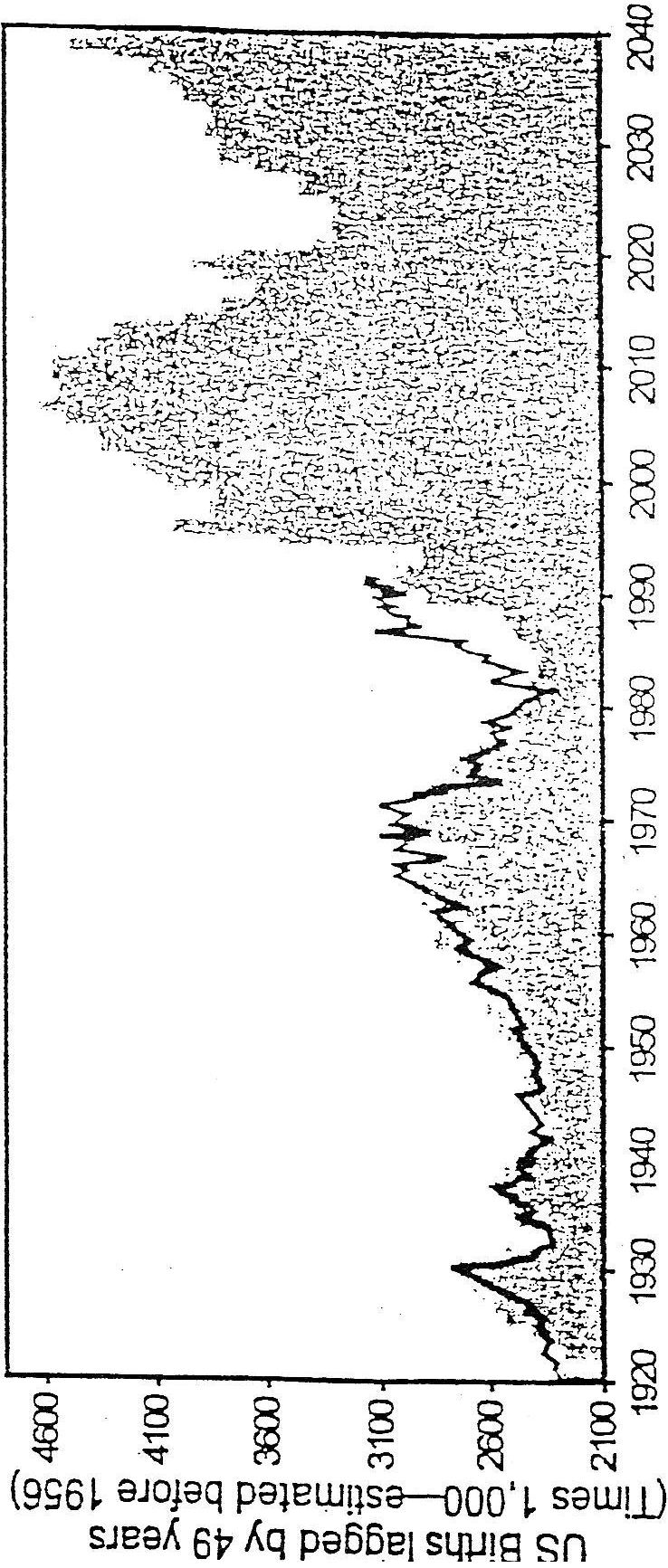
Integrating the Spending Wave with the S-Curves of the Standardized and Customized Economies



The Customized Economy that has been forming over the declining Standardized Economy

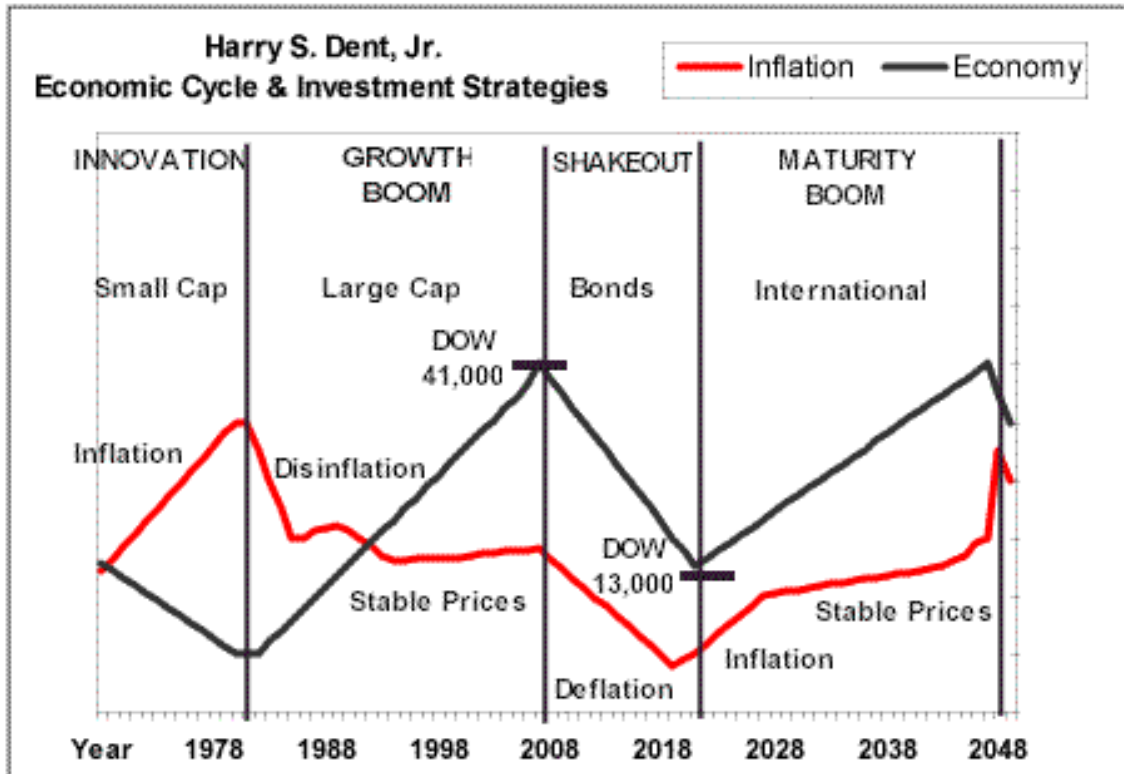
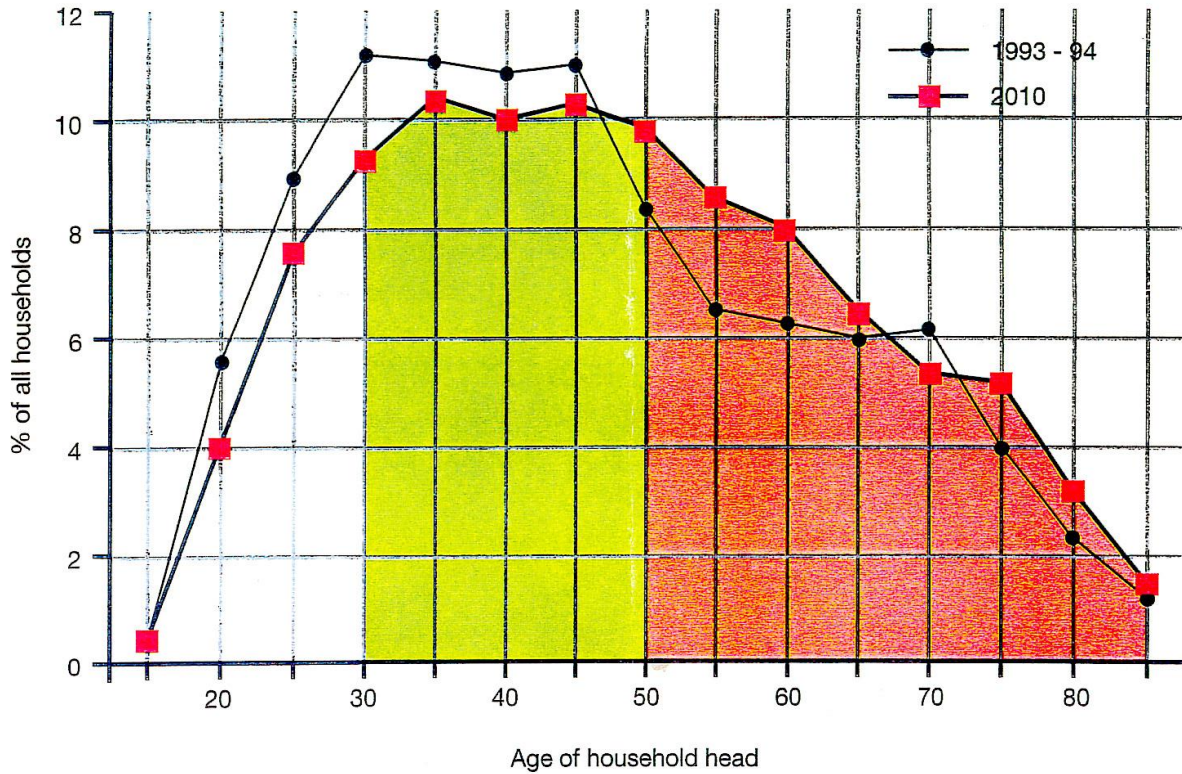
The Spending Wave extended

The 49 - Year Economic Forecast



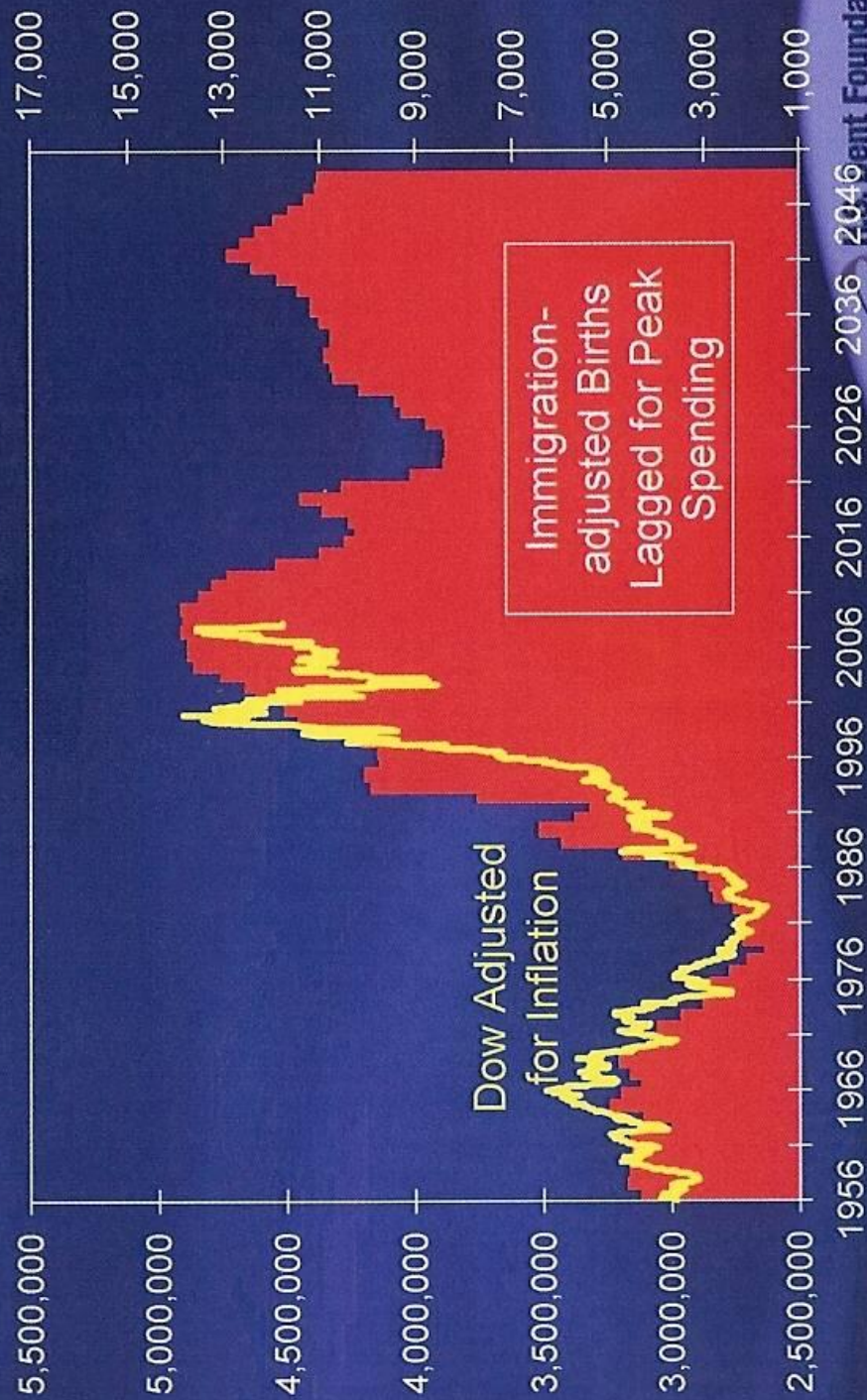
Australia joined the USA, Canada and New Zealand to have the largest baby boom birth cycles in the Western World following World War II. As a result these countries should boast the greatest booms in the coming decades as their baby boom generations approach their peak in spending. Using the Standard & Poors 500, adjusted for inflation, as a broad indicator of economic health, you can see how well the 47-49 birth rate projection tracks with the movements of the economy right back to 1920 (S&P 500 being the dark line and the shaded area being birth rates projected 49 years forward).

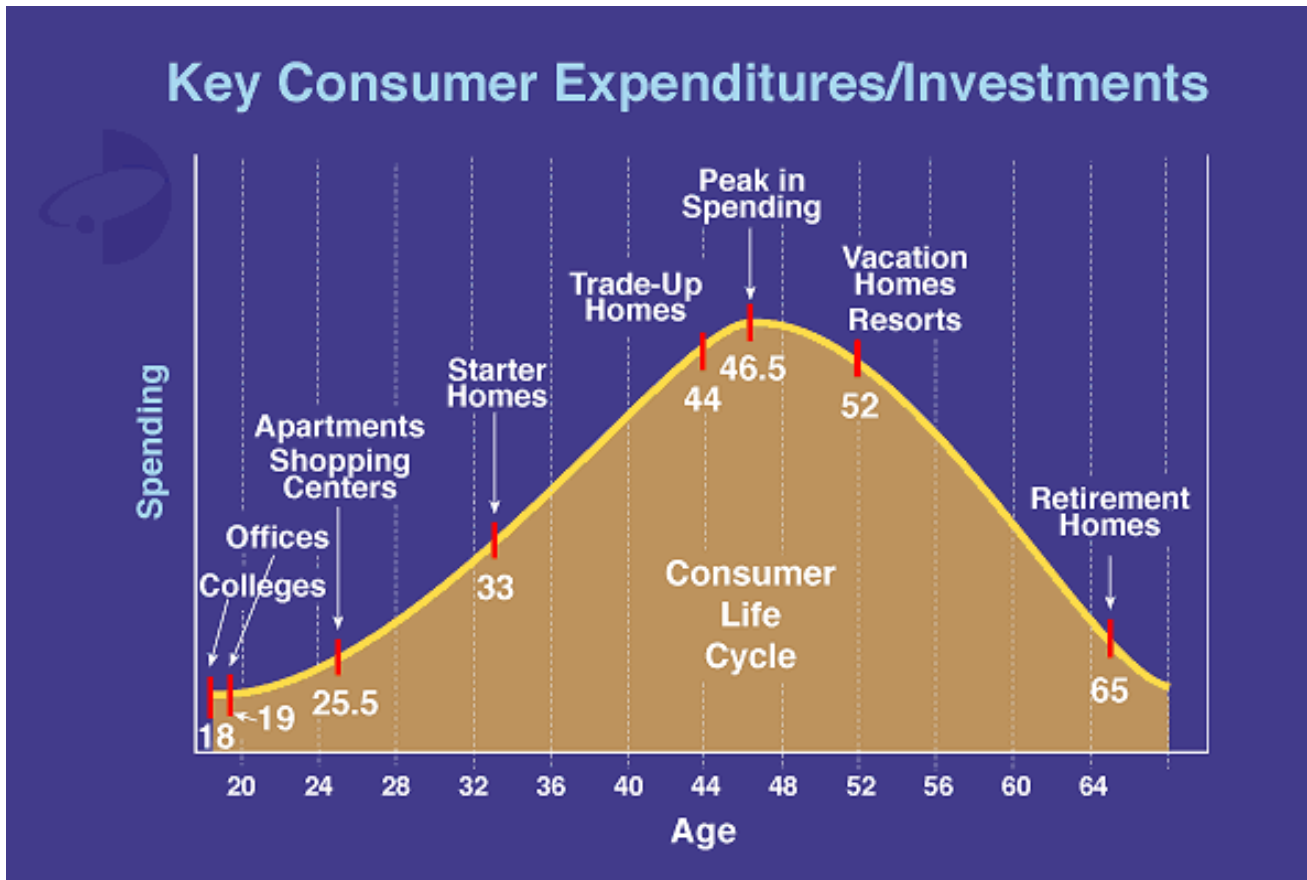
Forecast Proportion of all Households by age of Household Head, 1993-94 and 2010



The Spending Wave

Births Lagged for Peak in Family Spending





Labor Force Growth/Inflation Forecast

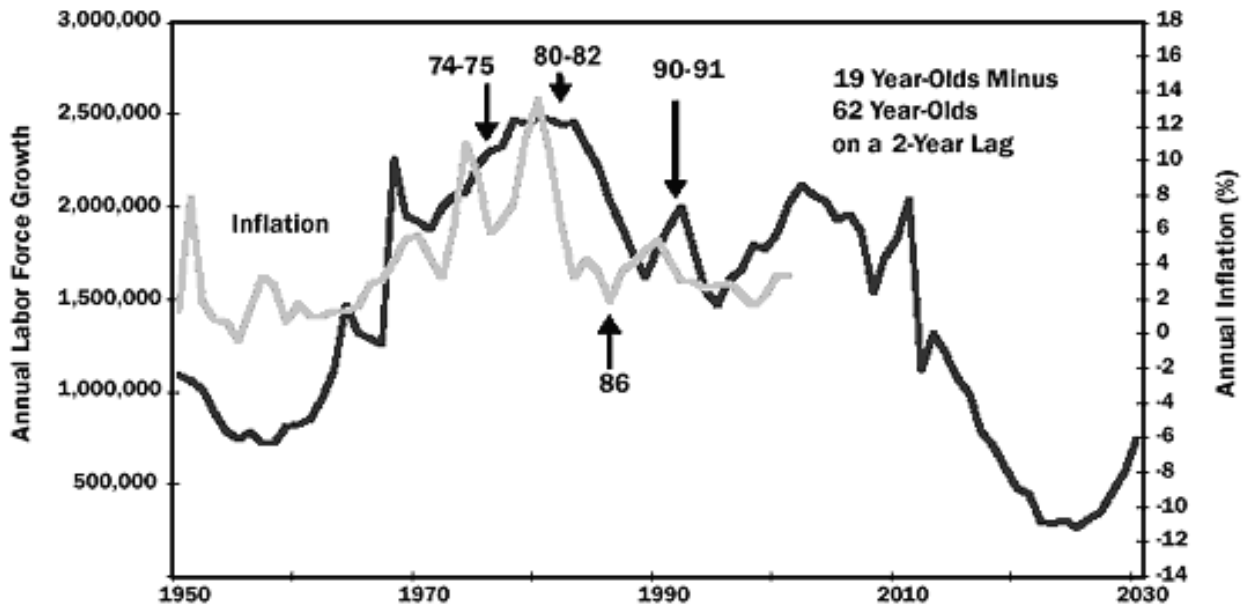


Chart 2

Location Social Considerations:

WORLDWIDE relationship of MoC calibration with Life Experiences Life Expectancy, Development, Happiness, Education, Income							
MoC	No. of Countries+ Territories	Average MoC	Average Life Expectancy	Human Development Index	Happiness Index	Education Index	Per Capita Income 2021
400s	22	405	82.2	0.924	7.1	.890	US\$63,032
300s	71	343	77.2	0.794	6.1	.741	US\$30,154
200s	50	251	72.7	0.676	5.3	.610	US\$16,560
High 100s	38	174	70.5	0.659	5.0	.600	US\$12,516
Low 100s	21	119	67.1	0.587	4.6	.501	US\$7,081
Below 100	14	74	65.3	0.565	4.4	.501	US\$6,377
WORLD	216	220	73.3				US\$17,110

This simple chart is the collation of many separate worldwide assessments of the levels of factors relating to life experiences and quality of life of the citizens of each country and territory worldwide.

The Map of Consciousness (MoC) was developed by Dr David R Hawkins and published in his book, Power vs Force was first published in 1995 after twenty years of investigation.

MoC 100 is the level of consciousness relating to the world’s humanity living before the time of Jesus of Nazareth and Mary Magdalene 2,000 years ago.

MoC 190 is the level of consciousness prevailing since the life of Jesus and Mary until the late 1900s.

MoC 220 is the level of consciousness of humanity around 2020 as a change in Ages is unfolding.

The higher the level of consciousness, then the higher the level of truth prevailing and love.

Note:
 The Map of Consciousness (MoC) table is based on the common log of 10. It is not a numeric table.
 A calibration increase of 1 point is in fact a 10 fold increase in energy.
 A calibration increase of 10 points is in fact a 10,000,000,000 fold increase in energy.
 Thus the energy differentials are in fact enormous!

Let us look at the effects of level of consciousness:

- MoC 100 income is around US\$8,000
 - MoC 200 income is around US\$16,000
 - MoC 300 income is around US\$32,000
 - MoC 400 income is around US\$64,000
- Note the doubling of incomes!

MoC 100	life expectancy	67 years	
MoC 200	life expectancy	72 years	
MoC 300	life expectancy	77 years	
MoC 400	life expectancy	82 years	Note 5 years increment with each 100 points!
MoC 100	happiness index	4.5	
MoC 200	happiness index	5.0	
MoC 300	happiness index	6.1	
MoC 400	happiness index	7.1	Note .0.5 added, then 1.1, then .1.0
MoC 100	education index	.500	
MoC 200	education index	.610	
MoC 300	education index	.740	
MoC 400	education index	.890	Note .110 added, then .130, then .150!

There are a number of additional worldwide surveys all leading towards the following understandings:

Open and free education is leading towards humanity progressing into the 400s MoC but not beyond 499 MoC.

While we focus upon living mind-centric then we cannot progress beyond MoC 499!

By aspiring to live feelings first having our mind follow in support of our feelings, and then embracing our Feeling Healing, also by longing for and receiving Divine Love, the Love of our Heavenly Mother and Father, then we are soul healing, our progression on the Map of Consciousness chart is infinite!

Those of us who heal ourselves of what we personally have taken on of the Rebellion and Default, we then have NO NEED to experience physical discomfort, pain, illness or disease. Thus we are addressing the underlying of all our physical ailments, all 10,000 variations identified by medical science to which they have no comprehension as to how a 'cure' may be achieved! Now you do know!

As we grow in truth and love, express our feelings both good and bad, and long to know the truth behind what our feelings are drawing our attention to, then we are Feeling Healing and growing in truth and love.

As you have seen from the above chart, as we heal and grow in truth and love our quality and standard of living and life grows, step by step.

How simple could life be? We do not need the burdens of wealth and assets. We are truth seekers and that is to be found through our feelings. Our own soul based feelings are always in truth, we are each fully self-contained. All is within. All we need do is to recognise that our feelings are to lead us in our growth and development of love.

WE ARE Truth Seekers

WORLDWIDE relationship of MoC calibration with Life Experiences Median Age of Population & Urban Slum Population						
MoC	No. of Countries+ Territories	Average MoC	Average Life Expectancy	Medium Age of Population 2021	Urban Population Living in Slums 2020	Per Capita Income 2021
400s	22	405	82.2	41.0	4.9%	US\$63,032
300s	71	343	77.2	34.7	17.4%	US\$30,154
200s	50	251	72.7	28.3	28.5%	US\$16,560
High 100s	38	174	70.5	25.7	33.8%	US\$12,516
Low 100s	21	119	67.1	22.3	43.7%	US\$7,081
Below 100	14	74	65.3	20.5	56.7%	US\$6,377
WORLD	216	220	73.3	30.7	> one billion 24.2%	US\$17,110

As average life expectancy grows, the median age of the population grows at a marginally faster rate, as does the growth in per capita income – at a higher rate. Education is the driver. The more open and freer the education system so is the higher the level of consciousness of the community and consequently all other social issues and ills are marginally and progressively mitigated. As of 2020; 56.2% of the global population now lives in cities.

There are many global surveys of numerous social observations and measures. Each of these, in their own way, reflect the Map of Consciousness scale. Conditions are better when the MoC is higher!

What is incredibly important to observe is that while we live mind-centric we do not progress beyond 499 on the Map of Consciousness. Our mind is a glass ceiling to our consciousness development and life experience. We remain retarded and subservient to hidden control, both in the visible and invisible.

**Living Mind dominated is
claustrophobic and suppressive!**



The Mind presents a treacherous glass ceiling!

WORLDWIDE relationship of MoC calibration with Life Experiences							
Pupil-Teacher ratio, Nurses Midwives per 1,000, Doctors per 1,000							
MoC	No. of Countries+ Territories	Average MoC	Average Life Expectancy	Pupil-Teacher ratio primary	Nurses Midwives per 1,000	Doctors per 1,000 people	Per Capita Income 2021
400s	22	405	82.2	13	11.3	3.9	US\$63,032
300s	71	343	77.2	18	5.6	2.7	US\$30,154
200s	50	251	72.7	23	3.7	1.4	US\$16,560
High 100s	38	174	70.5	28	3.1	1.5	US\$12,516
Low 100s	21	119	67.1	32	1.8	0.8	US\$7,081
Below 100	14	74	65.3	41	1.5	0.6	US\$6,377
WORLD	216	220	73.3	23	3.8	1.7	US\$17,110

TEACHING is the Paramount Profession !

WORLDWIDE relationship of MoC calibration with Life Experiences							
General Overview							
MoC	No. of Countries+ Territories	Average MoC	Average Life Expectancy	Medium Age of Population 2021	WORLD POPULATION 2021	% worldwide population	Per Capita Income 2021
400s	22	405	82.2	41.0	687,989,800	8.8%	US\$63,032
300s	71	343	77.2	34.7	4,064,565,401	51.8%	US\$30,154
200s	50	251	72.7	28.3	1,069,410,500	13.6%	US\$16,560
High 100s	38	174	70.5	25.7	744,280,000	9.4%	US\$12,516
Low 100s	21	119	67.1	22.3	750,726,000	9.6%	US\$7,081
Below 100	14	74	65.3	20.5	532,580,000	6.8%	US\$6,377
WORLD	216	220	73.3	30.7	7,849,551,701	100.0%	US\$17,110

Note:

The Map of Consciousness (MoC) table is based on the common log of 10. It is not a numeric table.

A calibration increase of 1 point is in fact a 10 fold increase in energy.

A calibration increase of 10 points is in fact a 10,000,000,000 fold increase in energy.

Thus the energy differentials are in fact enormous!

WORLDWIDE relationship of MoC calibration with Life Experiences

MoC	No. of Countries+ Territories	Average MoC	Average Life Expectancy	Human Development Index	Happiness Index	Education Index	Per Capita Income 2021
500+	NONE		Living Mind-Centric imposes a ceiling of 499 MoC on humanity!				
400s	22	405	82.2	0.924	7.1	.890	US\$63,032
300s	71	343	77.2	0.794	6.1	.741	US\$30,154
200s	50	251	72.7	0.676	5.3	.610	US\$16,560
100s	59	147	68.8	0.623	4.8	.551	US\$9,799
Below 100	14	74	65.3	0.565	4.4	.501	US\$6,377
WORLD	216	220	73.3				US\$17,110



PASCAS WORLDCARE
recognised Hierarchy of Needs,
structured upon Maslow's theory.

